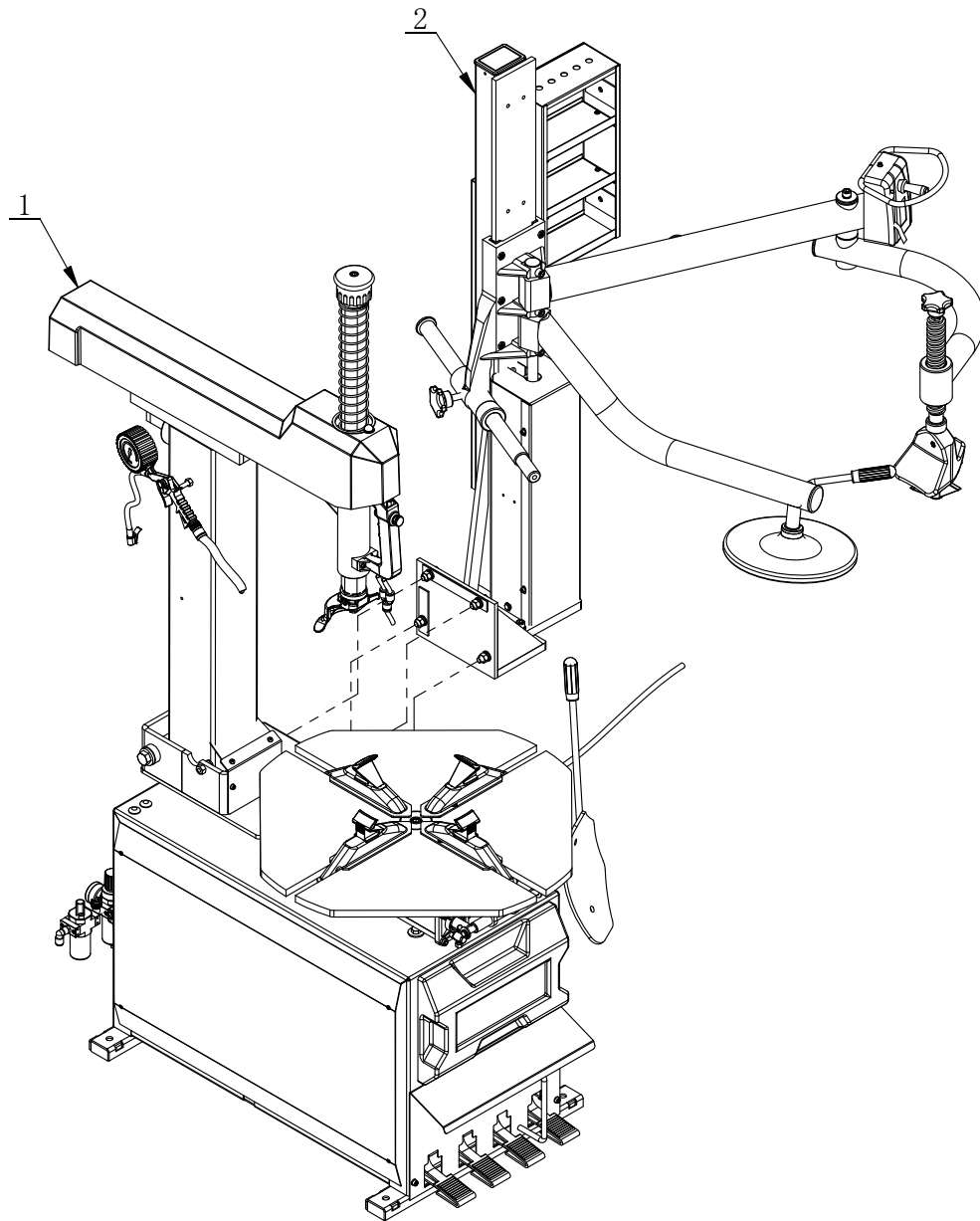
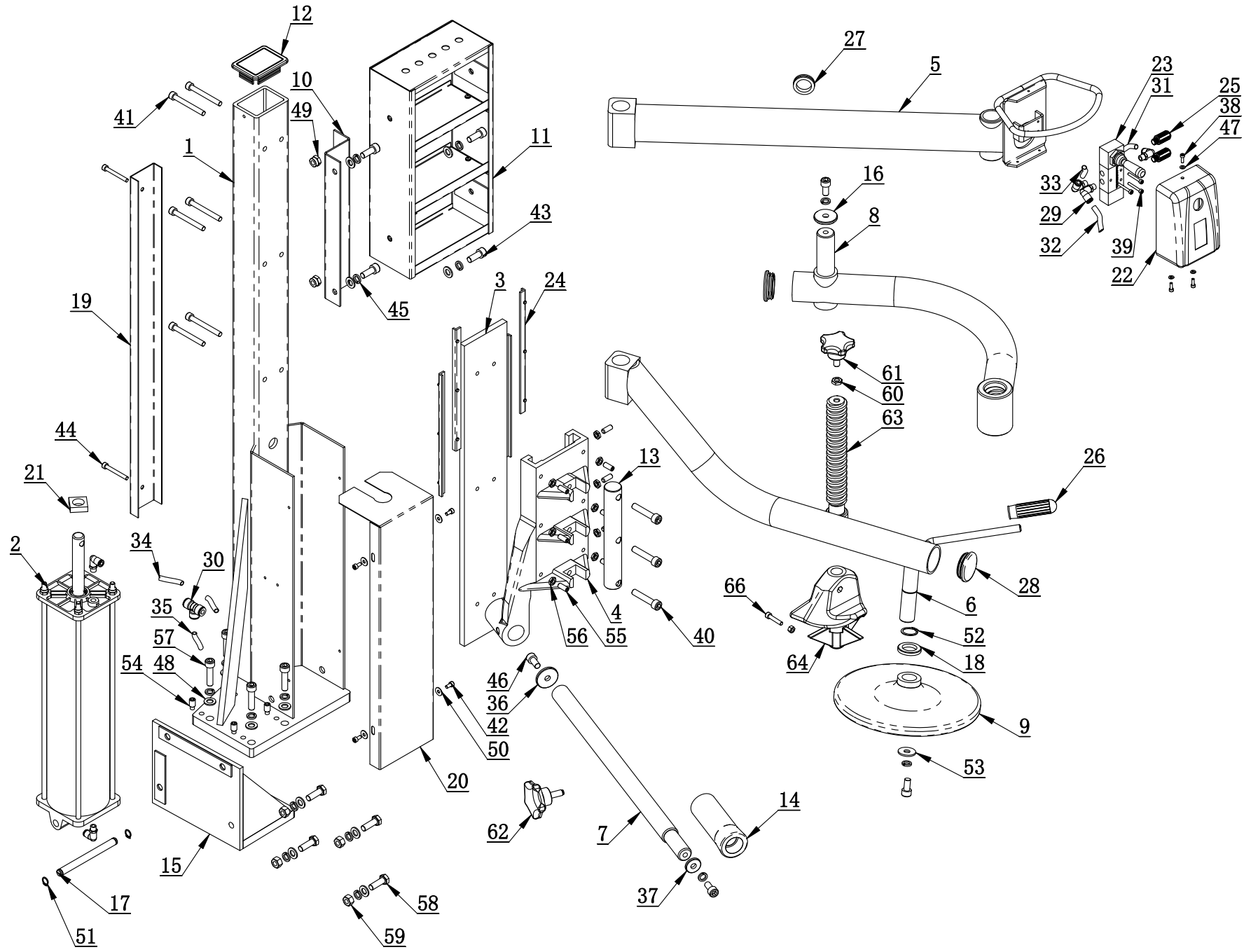


Станок
ШИНОМОНТАЖНЫЙ
V-624

Детализировка

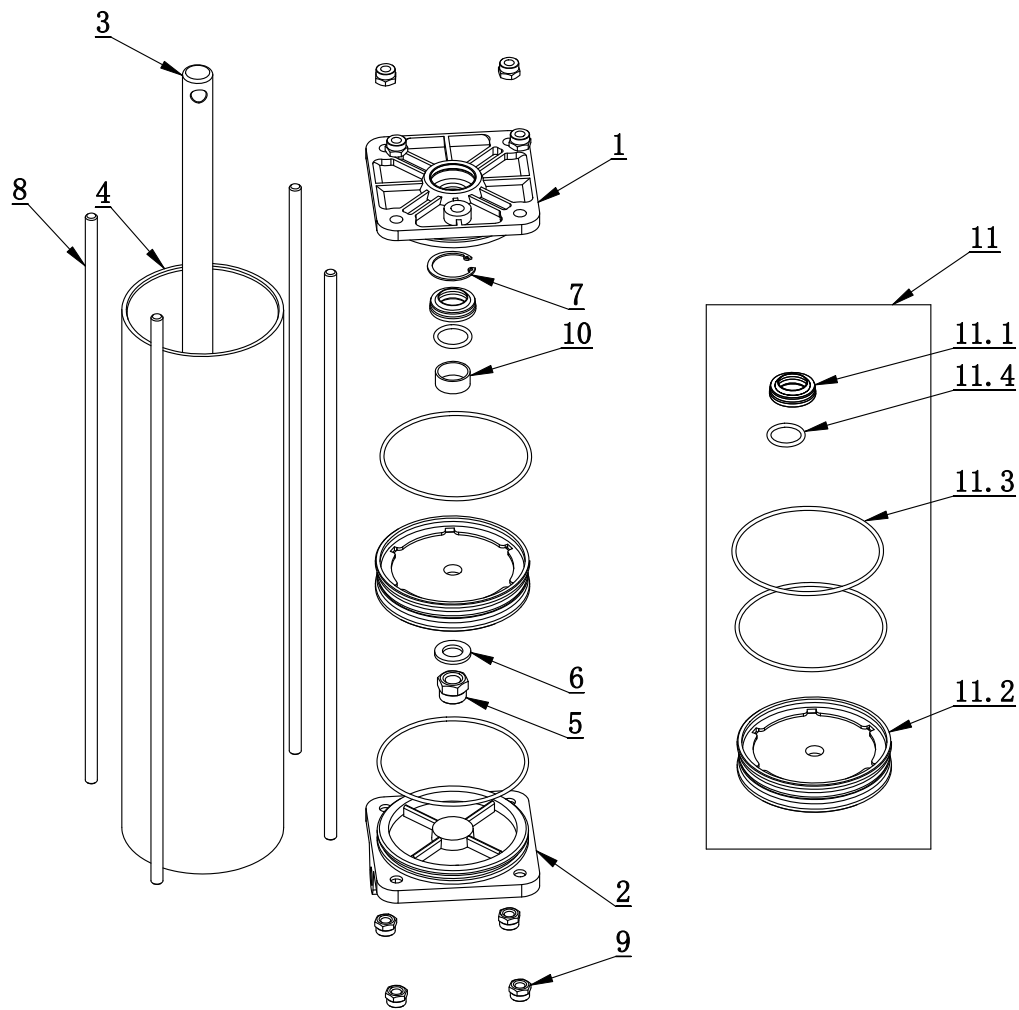


| ITEM | PART. No | DESCRIPTION. | QT. Y |
|------|--------------|------------------|-------|
| 1 | T624 | CAR TIRE CHANGER | 1 |
| 2 | H-23-1000000 | ASSISTANT ARM | 1 |

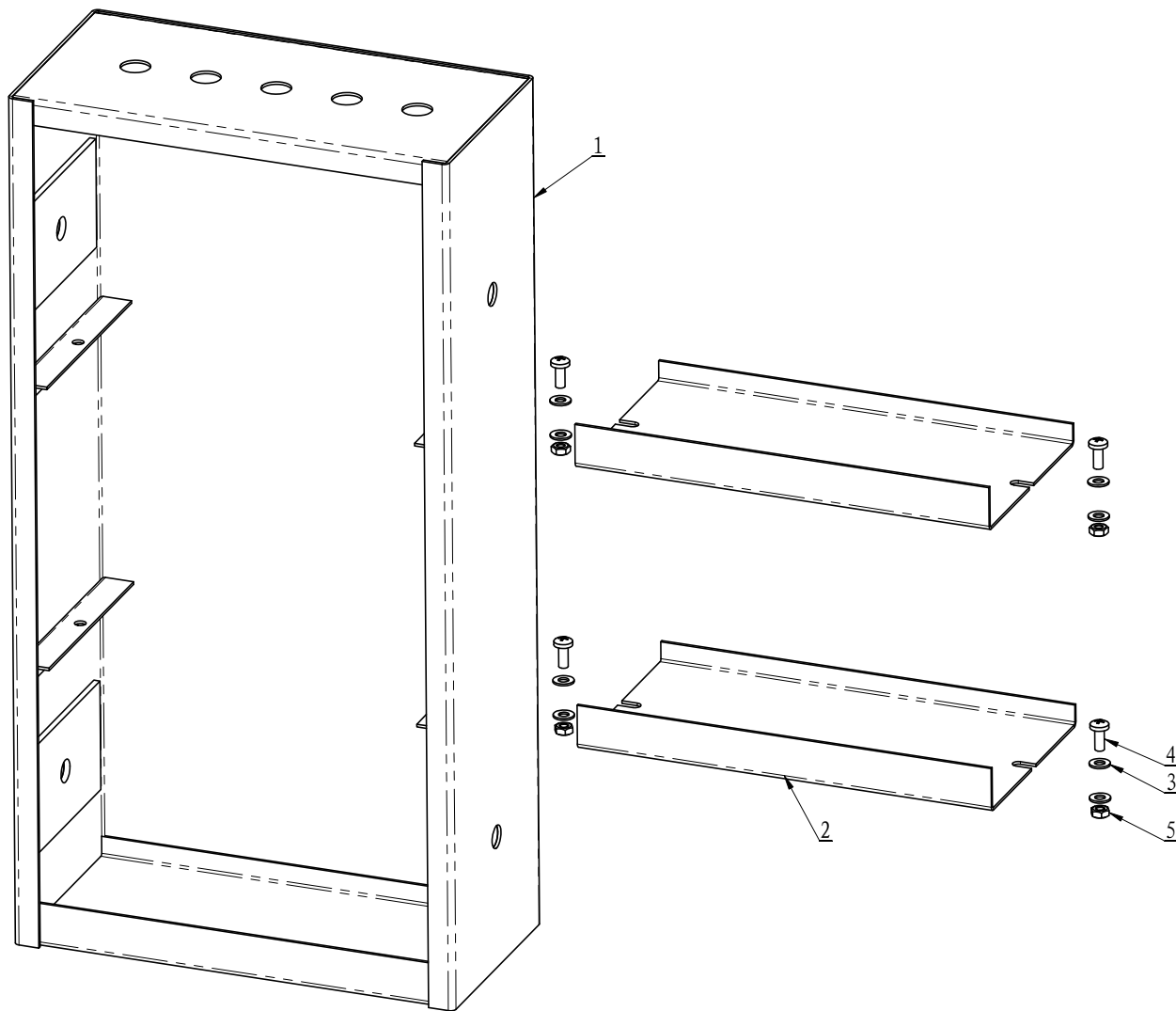


| ITEM | PART. No | DESCRIPTION. | QT. Y |
|------|----------------|------------------------------|-------|
| 1 | H-30-1300000 | MAIN BODY BRACKET | 1 |
| 2 | H-10-1500000 | LIFTING CYLINDER ASSEMBLY | 1 |
| 3 | H-10-1000004 | GUIDE RAIL | 1 |
| 4 | H-30-1000001 | MOBILE CARRIAGE | 1 |
| 5 | H-23-1300000 | SUPPORT ARM | 1 |
| 6 | H-23-1200000 | BEAD LIFTING ARM | 1 |
| 7 | H-30-1000005 | MOVABLE SHAFT | 1 |
| 8 | H-24-1100000 | ROTATION ARM | 1 |
| 9 | H-10-1000011 | TURNTABLE | 1 |
| 10 | H-10-1000015 | FIXTURE PLATE | 1 |
| 11 | H-10-1900000 | TOOL BOX ASSY | 1 |
| 12 | H-10-1000003 | PROTECTIVE COVER | 1 |
| 13 | H-10-1000002 | SHAFT CONNECTOR | 1 |
| 14 | H-30-1000003 | TIRE PRESSING ROLLER | 1 |
| 15 | H-23-1100000 | CONNECTING BRACKET WELDING | 1 |
| 16 | H-10-1000005 | WASHER | 1 |
| 17 | H-10-1000018 | SUPPORTING SHAFT | 1 |
| 18 | H-10-1000017 | WASHER | 1 |
| 19 | H-10-1000013 | U-STEEL | 1 |
| 20 | H-10-1000012 | CYLINDER COVER PLATE | 1 |
| 21 | H-12-1000001 | FELT WASHER | 1 |
| 22 | H-10-1000020 | HANDLE VALVE COVER | 1 |
| 23 | 4H230-06A | CONTROL VALVE | 1 |
| 24 | H-10-1000016 | GUIDEWAY | 4 |
| 25 | FSK 01 | PARTICLE SILENCER | 2 |
| 26 | TC-40-1200022 | RUBBER COVER | 1 |
| 27 | H-12-1000002 | PROTECTION RING | 1 |
| 28 | H-10-1000008 | ROUND COVER | 2 |
| 29 | FPL 6-01 | MALE ELBOW | 5 |
| 30 | FPT 6-8-8 | DIFFERENT DIA OF UNION TEE | 1 |
| 31 | PU-0602400 | PU HOSE C Φ6X4 | 1 |
| 32 | PU-0602400 | PU HOSE A Φ6X4 | 1 |
| 33 | PU-0602200 | PU-0602200 | 1 |
| 34 | PU-0800600 | PU HOSE Φ8x5 | 2 |
| 35 | PU-0800900 | PU HOSE Φ8x5 | 1 |
| 36 | H-30-1000006 | WASHER | 1 |
| 37 | H-30-1000004 | CONE ROLLER WASHER | 1 |
| 38 | GB70. 1-M4×12 | INNER HEXA CYLINDRICAL SCREW | 3 |
| 39 | GB70. 1-M4×30 | INNER HEXA CYLINDRICAL SCREW | 3 |
| 40 | GB70. 1-M10×50 | INNER HEXA CYLINDRICAL SCREW | 3 |

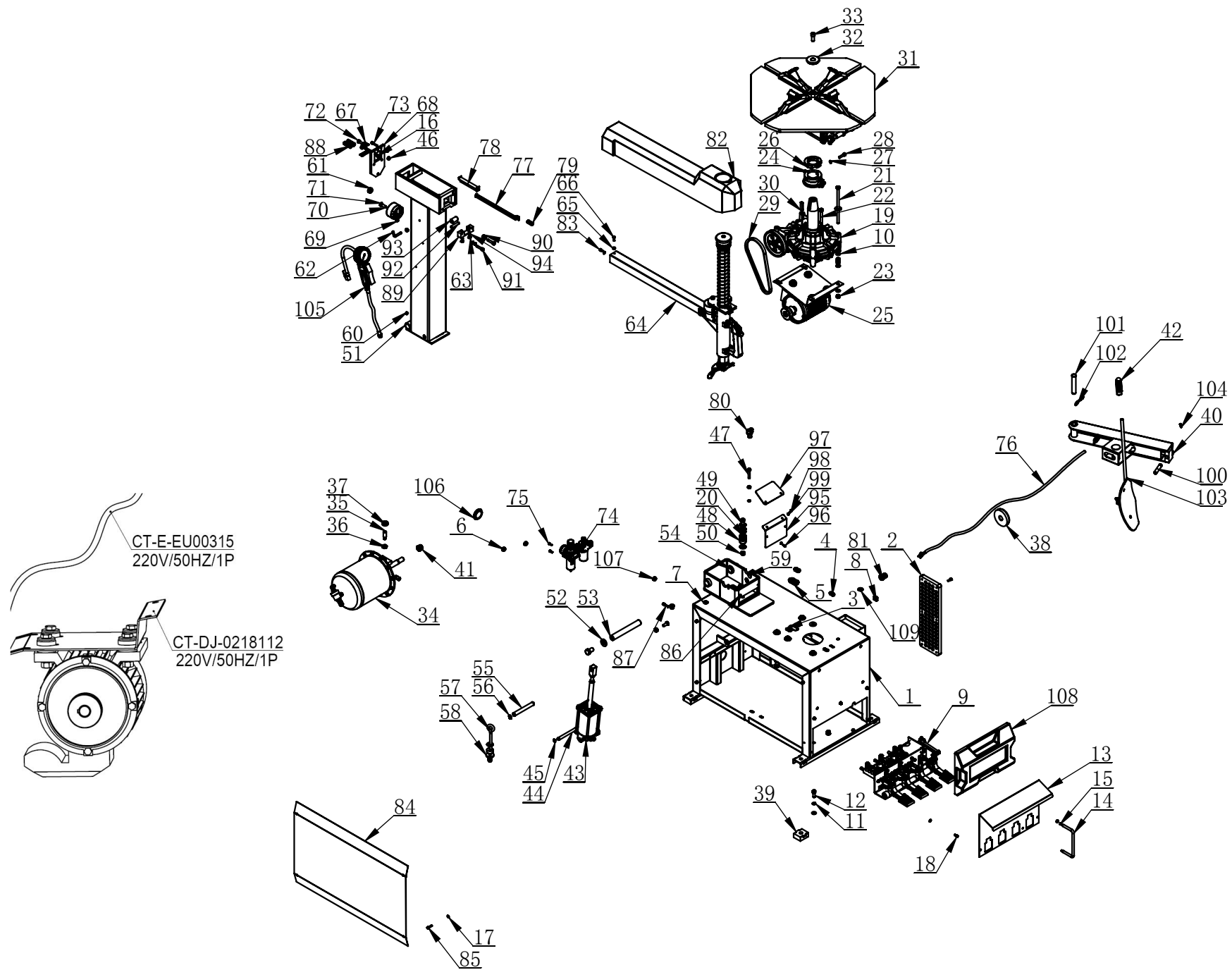
| ITEM | PART. No | DESCRIPTION. | QT. Y |
|------|----------------|--|-------|
| 41 | GB70. 1-M8×70 | INNER HEXA CYLINDRICAL SCREW | 6 |
| 42 | GB70. 1-M5×10 | INNER HEXA CYLINDRICAL SCREW | 4 |
| 43 | GB70. 1-M10×25 | INNER HEXA CYLINDRICAL SCREW | 4 |
| 44 | GB70. 1-M6×50 | INNER HEXA CYLINDRICAL SCREW | 2 |
| 45 | GB93-10 | STANDARD SPRING WASHER | 15 |
| 46 | GB70. 1-M10×20 | INNER HEXA CYLINDRICAL SCREW | 4 |
| 47 | GB95-4 | FLAT WASHER | 3 |
| 48 | GB95-10 | FLAT WASHER | 12 |
| 49 | GB889. 1-M10 | 1-TYPE PREVAILING TORQUE TYPE HEXAGON LOCK NUT | 2 |
| 50 | GB96. 2-5 | LARGE WASHER C GRADE | 4 |
| 51 | GB894. 1-12 | SHAFT ELATIC BIG RETAINING RING A-TYPE | 2 |
| 52 | GB894. 2-25 | SHAFT ELATIC RETAINING RING B-TYPE | 1 |
| 53 | GB96. 1-10 | LARGE WASHER A GRADE | 1 |
| 54 | GB79-M10×20 | INNER HEXA CYLINDRICAL TERMINUS SET SCREW | 4 |
| 55 | GB77-M8×20 | INNER HEXA FLAT TERMINUS SET SCREW | 9 |
| 56 | GB6172. 1-M8 | HEXANGULAR THIN NUT | 9 |
| 57 | GB70. 1-M10×40 | INNER HEXA CYLINDRICAL SCREW | 4 |
| 58 | GB5783-M10×30 | HEXANGULAR BOLT | 4 |
| 59 | GB41-M10 | HEXANGULAR NUT | 4 |
| 60 | GB6172. 1-M10 | HEXANGULAR THIN NUT | 1 |
| 61 | H-80-1000013 | THE STAR HANDLE M10-20 | 1 |
| 62 | H-80-1003000 | HAND OF FIVE STARS | 1 |
| 63 | H-20-1000001 | PRESSURE SCREW | 1 |
| 64 | H-80-1001000 | PRESS PART | 1 |
| 65 | GB41-M6 | HEXANGULAR NUT | 1 |
| 66 | GB70. 1-M6×30 | INNER HEXA CYLINDRICAL SCREW | 1 |



| ITEM | PART. No | DESCRIPTION. | QT. Y |
|-------|----------------------|---|-------|
| 1 | H-10-1500002 | CYLINDER FRONT COVER | 1 |
| 2 | H-10-1500005 | CYLINDER BEAR COVER | 1 |
| 3 | H-10-1500004 | PISTON ROD | 1 |
| 4 | H-10-1500003 | CYLINDER | 1 |
| 5 | GB889. 1-M12 | 1- TYPE PREVAILING TORQUE TYPE HEXAGON LOCK NUT | 1 |
| 6 | GB95-12 | FLAT WASHER | 1 |
| 7 | GB893. 1-30 | ELASTIC RETAINING RING A-TYPE | 1 |
| 8 | H-10-1500006 | BOLT | 4 |
| 9 | GB889. 1-M8 | 1-TYPE PREVAILING TORQUE TYPE HEXAGON LOCK NUT | 8 |
| 10 | JH1 2010 | BEARING-SLIDE | 1 |
| 11 | H-10-1590000 | CYCLINDER SEALING PARTS ASSEMBLY | 1 |
| 11. 1 | BYXQ30x20x7 | SEAL-ROD, CYLNDR | 2 |
| 11. 2 | H-10-1500001 | PISTON | 1 |
| 11. 3 | GB3452. 1-95×2. 65-G | HYDRAULIC-PNEUMATIC RUBBER O-RING G TYPE | 2 |
| 11. 4 | GB3452. 1-20×2. 65-G | HYDRAULIC-PNEUMATIC RUBBER O-RING G TYPE | 1 |



| ITEM | PART. No | DESCRIPTION. | QT. Y |
|------|-----------------|-----------------------|-------|
| 1 | H-10-1910000 | TOOL BOX ASSY WELDING | 1 |
| 2 | H-10-1900002 | SPACE | 2 |
| 3 | GB95-4 | FLAT WASHER | 8 |
| 4 | GB818-M4 × 10-H | CROSS PANHEAD SCREW | 4 |
| 5 | GB6170-M4 | HEXANGULAR NUT 1-TYPE | 4 |



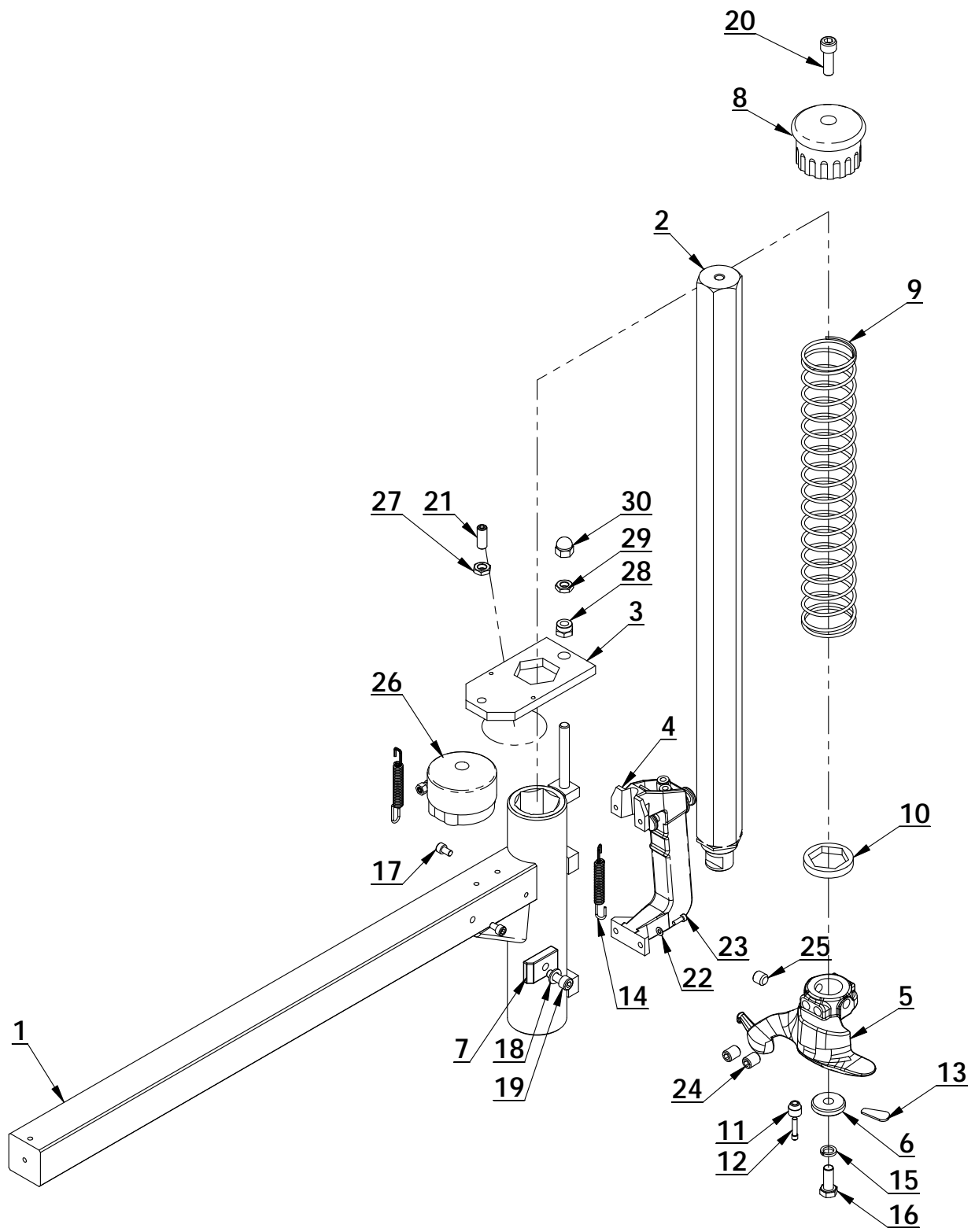
CT-E-EU00315
220V/50HZ/1P

CT-DJ-0218112
220V/50HZ/1P

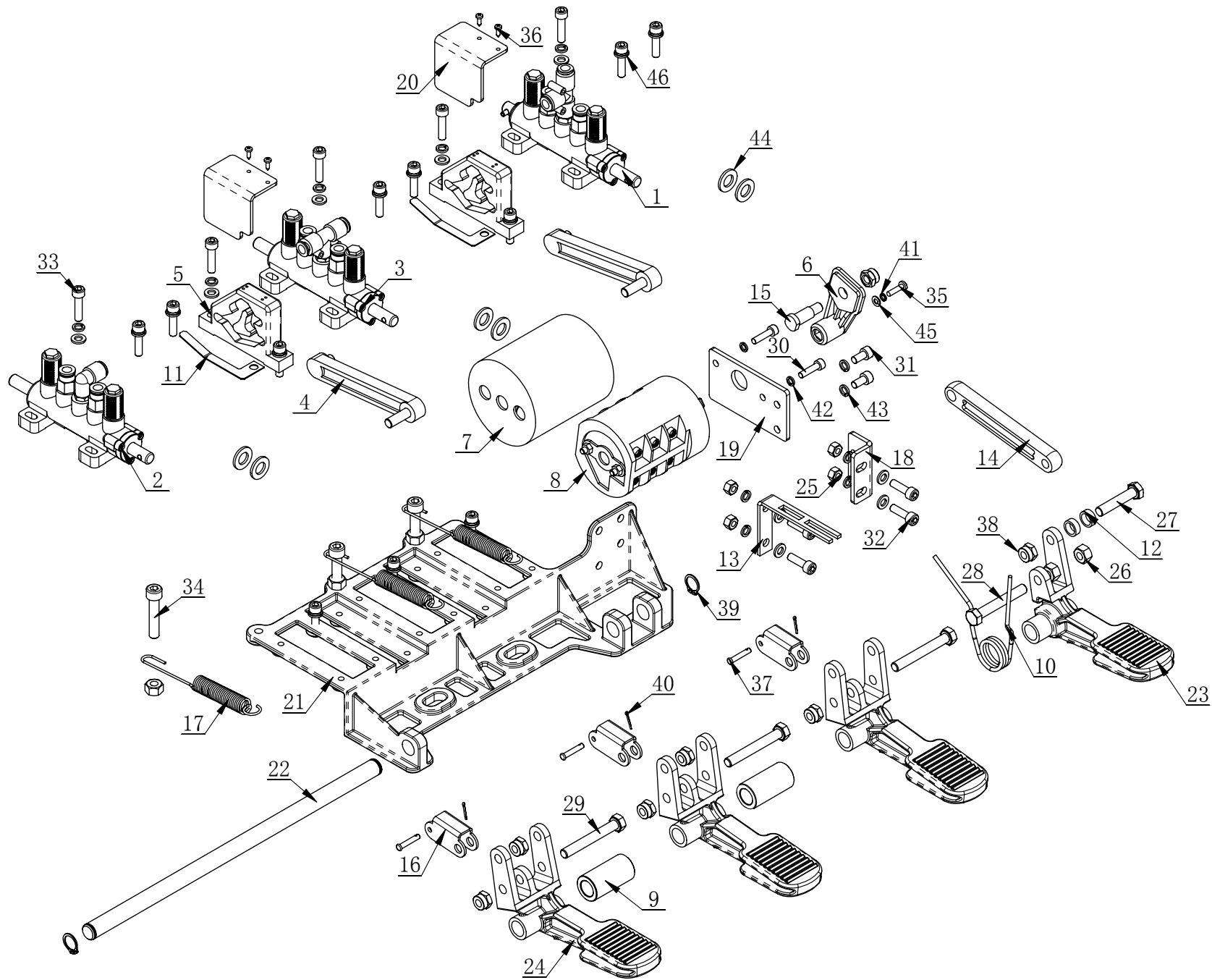
| ITEM | PART. No | DESCRIPTION. | QT. Y |
|------|----------------------|--------------------------------|-------|
| 1 | C-7D-1100000 | BODY | 1 |
| 2 | C-7C-1000008 | RIM SUPPORT | 1 |
| 3 | C-54-1000022 | PLUG C | 2 |
| 4 | C-54-1000023 | PLUG A | 2 |
| 5 | C-54-1000028 | PLUG B | 1 |
| 6 | C-71-1000027 | HELPER RUBBE PLUG | 2 |
| 7 | C-71-1000020 | STOP-UP | 2 |
| 8 | C-54-1000015 | STOP-UP | 1 |
| 9 | CT-D-A500000 | PEDAL ASSEMBLY | 1 |
| 10 | GB95-10 | FLAT WASHER | 16 |
| 11 | GB93-10 | STANDARD SPRING WASHER | 2 |
| 12 | GB70. 1-M10×25 | INNER HEXA CYLINDRICAL SCREW | 2 |
| 13 | C-7C-1000001 | PROTECTIVE COVER | 1 |
| 14 | C-71-1000005 | PROTECTIVE ROD | 1 |
| 15 | GB93-6 | STANDARD SPRING WASHER | 2 |
| 16 | GB41-M6 | HEXANGULAR NUT | 4 |
| 17 | GB95-6 | FLAT WASHER | 10 |
| 18 | GB70. 1-M6×12 | INNER HEXA CYLINDRICAL SCREW | 5 |
| 19 | CT-J-3100000 | GEARBOX ASSEMBLY | 1 |
| 20 | GB96. 2-10 | large washer C grade | 13 |
| 21 | GB5782-M10×200-W8. 8 | HEXANGULAR BOLT | 4 |
| 22 | GB5782-M10×160-W8. 8 | HEXANGULAR BOLT | 2 |
| 23 | GB41-M10 | HEXANGULAR NUT | 16 |
| 24 | CT-Q-1000000 | ROTATING UNION | 1 |
| 25 | CT-DJ-0334122 | MOTOR | 1 |
| 26 | CT-Q-6000000 | CLAMP RING | 1 |
| 27 | GB93-8 | STANDARD SPRING WASHER | 5 |
| 28 | GB70. 1-M8×30 | INNER HEXA CYLINDRICAL SCREW | 1 |
| 29 | CT-DJ-0000007 | BELT | 1 |
| 30 | GB1096-C12×8×45 | COMMON FLAT KEY | 1 |
| 31 | CT-Y-1600000 | TURNTABLE ASSEMBLY | 1 |
| 32 | C-54-1000012 | PRESS COVER | 1 |
| 33 | GB70. 1-M12×30 | INNER HEXA CYLINDRICAL SCREW | 1 |
| 34 | CT-LS-1600000 | BEAD BREAKER CYLINDER ASSEMBLY | 1 |
| 35 | C-54-1000010 | SCREWS M14X42 | 2 |
| 36 | GB6172. 1-M14 | HEXANGULAR THIN NUT | 2 |
| 37 | C-54-1000013 | SEALED COVER | 1 |
| 38 | C-54-1000016 | WESHER | 1 |
| 39 | C-54-1000005 | RUBBER FOOT | 4 |
| 40 | CT-B-4000000 | BEAD BREAKING ARM ASSEMBLY | 1 |

| ITEM | PART. No | DESCRIPTION. | QT. Y |
|------|---------------------|--|-------|
| 41 | GB889. 2-M18×1. 5 | NUT M18X1. 5 | 1 |
| 42 | TC-40-1200022 | RUBBER COVER | 1 |
| 43 | CT-XD-3000000 | PULL-OUT CYLINDER D80X80 | 1 |
| 44 | C-71-1000006 | PIN SHAFT | 1 |
| 45 | GB894. 1-12 | SHAFT ELATIC BIG RETAINING RING A-TYPE | 2 |
| 46 | GB41-M8 | HEXANGULAR NUT | 4 |
| 47 | GB5782-M8×45 | HEXANGULAR BOLT | 2 |
| 48 | C-71-1000013 | WASHER Φ 30xΦ 10x15 | 2 |
| 49 | GB5782-M10×50 | HEXANGULAR BOLT | 1 |
| 50 | GB889. 1-M10 | 1-TYPE PREVAILING TORQUE TYPE HEXAGON LOCK NUT | 2 |
| 51 | C-7C-1200000 | COLUMN WELDING DRAWING | 1 |
| 52 | C-71-1000010 | WASHER | 2 |
| 53 | C-71-1000012 | ROTATION SHAFT | 1 |
| 54 | GB5782-M16×25-W8. 8 | HEXANGULAR BOLT | 2 |
| 55 | C-71-1000007 | PULL-OUT SHAFT | 1 |
| 56 | GB894. 1-16 | SHAFT ELATIC BIG RETAINING RING A-TYPE | 2 |
| 57 | C-71-1000008 | CONNECTION ROD | 1 |
| 58 | C-71-1000028 | WASHER | 1 |
| 59 | C-71-1000009 | BOLT | 2 |
| 60 | TC-10-8400006 | OIL CUP M6 | 1 |
| 61 | C-71-1000019 | STOP-UP | 1 |
| 62 | C-71-1000024 | INFLATING GUN HOOK | 1 |
| 63 | GB6172. 1-M8 | HEXANGULAR THIN NUT | 2 |
| 64 | C-7C-1300000 | HORIZONTAL ARM ASSEMBLY | 1 |
| 65 | C-71-1000021 | SPACER | 1 |
| 66 | GB70. 1-M6×16 | SCREW | 7 |
| 67 | C-71-1000017 | SLIDER | 2 |
| 68 | C-71-1400000 | SQUARE LOCK PLATE | 1 |
| 69 | C-71-1500000 | LOCKING CYLINDER ASSY | 1 |
| 70 | C-71-1000029 | INNER HEXA FLAT TERMINUS SET SCREW | 1 |
| 71 | GB6173-M10×1. 0 | HEXA THIN NUT | 1 |
| 72 | GB5781-M8×35 | HEXANGULAR BOLT | 1 |
| 73 | GB5782-M6×30 | HEXANGULAR BOLT | 2 |
| 74 | CT-F-3111100 | AIR REGULATOR ASSEMBLY | 1 |
| 75 | GB70. 1-M5×12 | INNER HEXA CYLINDRICAL SCREW | 2 |
| 76 | CT-E-EU00410 | CABLE | 1 |
| 77 | C-71-1000015 | AIR HOSE CHUTE | 1 |
| 78 | C-71-1000016 | AFTER AIR HOSE CHUTE | 1 |
| 79 | FPU-6 | UNION STRAIGHT | 1 |
| 80 | FPY-8 | Y-SHAPE INSERT FITTINGΦ8 | 1 |

| ITEM | PART. No | DESCRIPTION. | QT. Y |
|------|-------------------|--|-------|
| 81 | C-54-1000017 | CABLE CONNECTOR | 1 |
| 82 | C-71-1000023 | PROTECTIVE COVER | 1 |
| 83 | GB70. 1-M6×10 | INNER HEXA CYLINDRICAL SCREW | 1 |
| 84 | C-6C-1000001 | SIDE PANEL | 1 |
| 85 | GB70. 1-M6×20 | INNER HEXA CYLINDRICAL SCREW | 4 |
| 86 | GB95-5 | FLAT WASHER | 4 |
| 87 | GB5782-M5×16-8. 8 | HEXANGULAR BOLT | 1 |
| 88 | C-71-1000018 | PRESS SPRING | 2 |
| 89 | C-7C-1000004 | STAND | 1 |
| 90 | GB95-8 | FLAT WASHER | 2 |
| 91 | GB70. 1-M8×35 | INNER HEXA CYLINDRICAL SCREW | 2 |
| 92 | GB119. 2-10×50 | CYLINDRICAL PIN | 1 |
| 93 | C-7C-1000005 | TELEFLEX | 1 |
| 94 | GB77-M8×20 | INNER HEXA FLAT TERMINUS SET SCREW | 2 |
| 95 | C-7C-1000003 | PROTECTIVE PLATE | 1 |
| 96 | GB70. 1-M5×10 | INNER HEXA CYLINDRICAL SCREW | 2 |
| 97 | C-7C-1000006 | RUBBER PLATE | 1 |
| 98 | GB818-M5×12-H | CROSS PANHEAD SCREW | 2 |
| 99 | GB41-M5 | HEXANGULAR NUT | 2 |
| 100 | C-7C-1000007 | ROTATION SPINDLE | 1 |
| 101 | GB882-18×100 | PIN SHAFT | 1 |
| 102 | C-01-100000B | CIRCLIP | 1 |
| 103 | CT-C-3100000 | BEAD BREAKER BLADE | 1 |
| 104 | GB85-M6×12 | SQUARE HEAD CYLINDRICAL TERMINUS SET SCREW | 1 |
| 105 | CT-P-6000000 | INFLATING GUN ASSY | 1 |
| 106 | C-61-1000002 | CUSHION BUSHING | 1 |
| 107 | C-61-1000003 | HELPER RUBBE PLUG | 1 |
| 108 | C-01-1000004 | THE FACE | 1 |
| 109 | GB861. 1-14 | INNER TOOTH LOCK WAHSER | 2 |

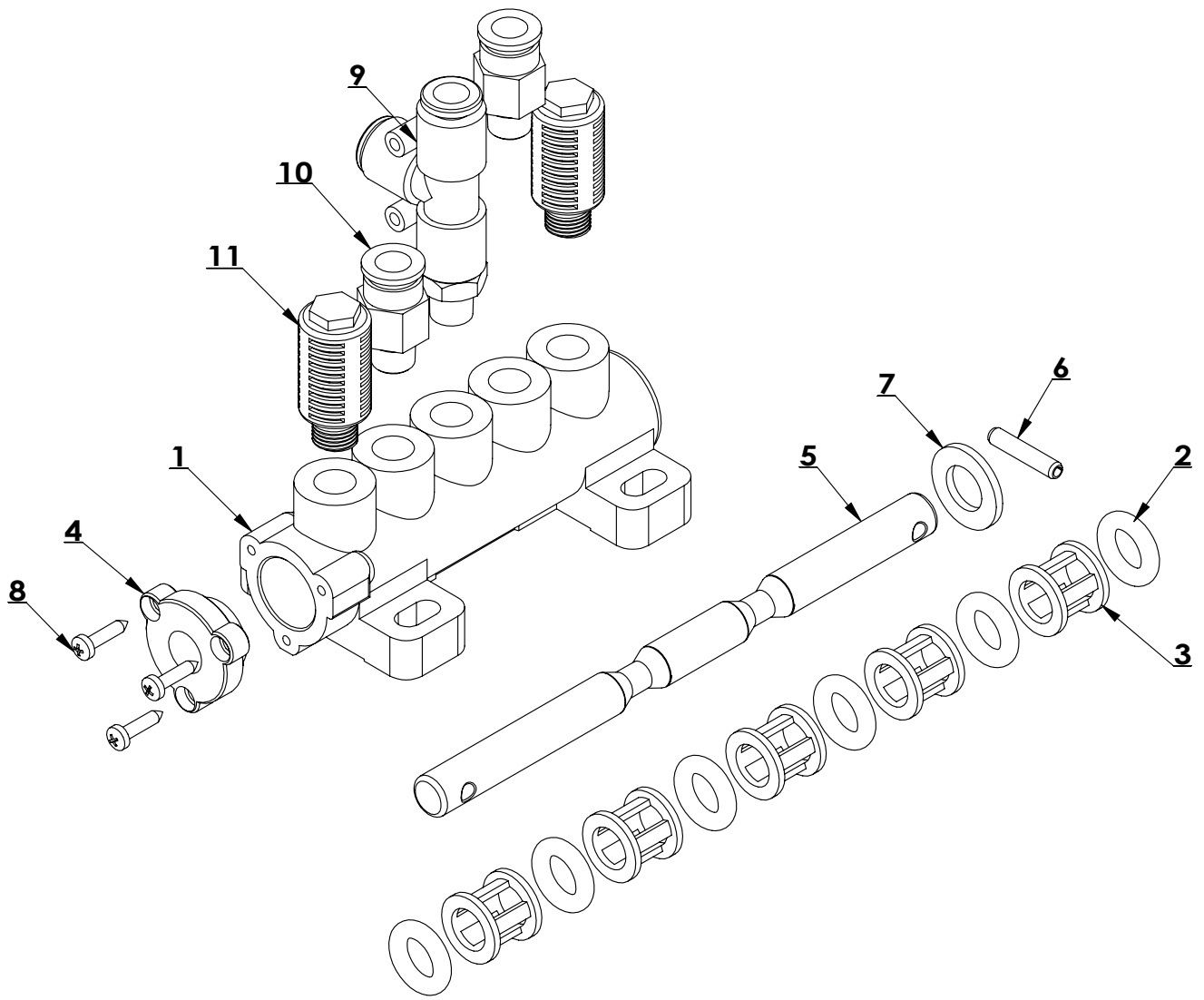


| ITEM | PART. No | DESCRIPTION. | QT. Y |
|------|--------------------|--|-------|
| 1 | C-7C-1310000 | HORIZONTAL ARM WELDING | 1 |
| 2 | C-77-1300003 | HEXANGULAR SHAFT | 1 |
| 3 | C-7C-1300002 | HEXANGULAR LOCK PLATE | 1 |
| 4 | C-71-1330000 | HANDLE CONTROLING VALVE | 1 |
| 5 | C-54-1300004 | DEMOUNTING HEAD | 1 |
| 6 | C-54-1300008 | PRESS WASHER | 1 |
| 7 | C-71-1300005 | POSITIONING BLOCK | 1 |
| 8 | C-54-1300003 | VERTICAL SHAFT COVER | 1 |
| 9 | C-54-1300010 | VERTICAL SHAFT SPRING | 1 |
| 10 | C-54-1300007 | SHOCK ABSORBER WASHER | 1 |
| 11 | C-54-1300009 | ROLLER | 1 |
| 12 | C-54-1300006 | ROLLER BOLT | 1 |
| 13 | C-54-8000007 | PLASTIC COVER | 1 |
| 14 | C-71-1300004 | SPRING | 2 |
| 15 | GB93-10 | STANDARD SPRING WASHER | 1 |
| 16 | GB5783-M10×25-W8.8 | HEXANGULAR BOLT | 1 |
| 17 | GB70.1-M6×10 | INNER HEXA CYLINDRICAL SCREW | 2 |
| 18 | GB95-8 | FLAT WASHER | 1 |
| 19 | GB70.1-M8×20 | INNER HEXA CYLINDRICAL SCREW | 1 |
| 20 | GB70.1-M10×30 | INNER HEXA CYLINDRICAL SCREW | 1 |
| 21 | C-71-1000029 | INNER HEXA FLAT TERMINUS SET SCREW | 1 |
| 22 | GB95-4 | FLAT WASHER | 4 |
| 23 | GB70.1-M4×12 | INNER HEXA CYLINDRICAL SCREW | 4 |
| 24 | GB77-M12×16 | INNER HEXA FLAT TERMINUS SET SCREW | 2 |
| 25 | GB77-M12×12 | INNER HEXA FLAT TERMINUS SET SCREW | 2 |
| 26 | C-71-1320000 | LOCKING CYLINDER ASSY | 1 |
| 27 | GB6173-M10×1.0 | HEXA THIN NUT | 1 |
| 28 | GB889.1-M10 | 1-TYPE PREVAILING TORQUE TYPE HEXAGON LOCK NUT | 1 |
| 29 | GB6172.1-M10 | HEXANGULAR THIN NUT | 1 |
| 30 | GB923-M10 | CAP NUT | 1 |

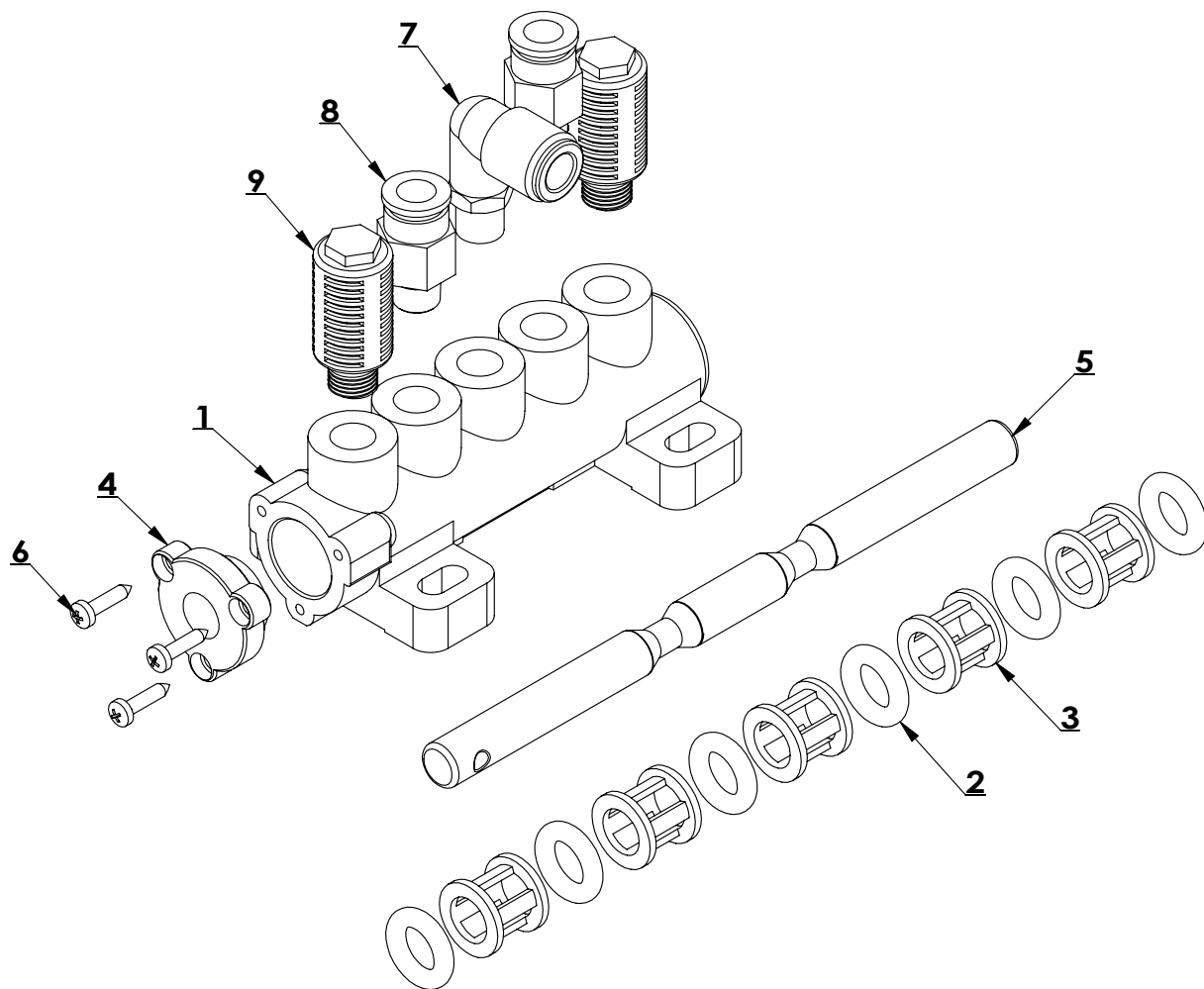


| ITEM | PART. No | DESCRIPTION. | QT. Y |
|------|---------------------|------------------------------|-------|
| 1 | CT-D-0010000 | VALVE | 1 |
| 2 | CT-D-0012000 | VALVE | 1 |
| 3 | CT-D-0014000 | VALVE | 1 |
| 4 | CT-D-1100008 | CAM CONNECTING ROD | 2 |
| 5 | CT-D-1100009 | CAM | 2 |
| 6 | CT-D-1100010 | REVERSE LEVER | 1 |
| 7 | CT-D-1100014 | SWITCH COVER | 1 |
| 8 | CT-D-1100018 | SWITCH | 1 |
| 9 | CT-D-2100001 | SPACER | 2 |
| 10 | CT-D-2100002 | TORSION SPRING | 1 |
| 11 | CT-D-2100004 | SPRING | 2 |
| 12 | CT-D-2100005 | SPACER | 2 |
| 13 | CT-D-2100010 | TORSION SPRING BRACKET | 1 |
| 14 | CT-D-2100011 | CONNECTION ROD | 1 |
| 15 | CT-D-2100012 | ROTATION SHAFT | 1 |
| 16 | CT-D-5100005 | CONNECTION PART | 3 |
| 17 | CT-D-5100007 | SPRING | 3 |
| 18 | CT-D-5100008 | SWITCH SUPPORT | 1 |
| 19 | CT-D-5100009 | SWITCH SUPPORT | 1 |
| 20 | CT-D-5100010 | CAM BAFFLE PLATE | 2 |
| 21 | CT-D-6100001 | PEDAL SUPPORT WELDING | 1 |
| 22 | CT-D-6100002 | BOTTOM SHAFT | 1 |
| 23 | CT-D-9100001 | PEDAL | 1 |
| 24 | CT-D-9100002 | PEDAL | 3 |
| 25 | GB41-M6 | HEXANGULAR NUT | 4 |
| 26 | GB41-M8 | HEXANGULAR NUT | 5 |
| 27 | GB5781-M8×40 | HEXANGULAR BOLT | 1 |
| 28 | GB5782-M8×55 | HEXANGULAR BOLT | 1 |
| 29 | GB5782-M8×60 | HEXANGULAR BOLT | 3 |
| 30 | GB70. 1-M5×20 | INNER HEXA CYLINDRICAL SCREW | 2 |
| 31 | GB70. 1-M6×12 | INNER HEXA CYLINDRICAL SCREW | 2 |
| 32 | GB70. 1-M6×20 | INNER HEXA CYLINDRICAL SCREW | 4 |
| 33 | GB70. 1-M6×25 | SCREW | 16 |
| 34 | GB70. 1-M8×40 | INNER HEXA CYLINDRICAL SCREW | 3 |
| 35 | GB818-M4×16-H | CROSS PANHEAD SCREW | 1 |
| 36 | GB845-ST2.9×9.5 H C | CROSS PANHEAD TAPPING SCREW | 4 |
| 37 | GB882-4×22 | PIN SHAFT | 3 |
| 38 | GB889. 1-M8 | NUT | 7 |
| 39 | GB894. 1-14 | RING | 2 |
| 40 | GB91-1.6×10 | SLOTTED PIN | 3 |

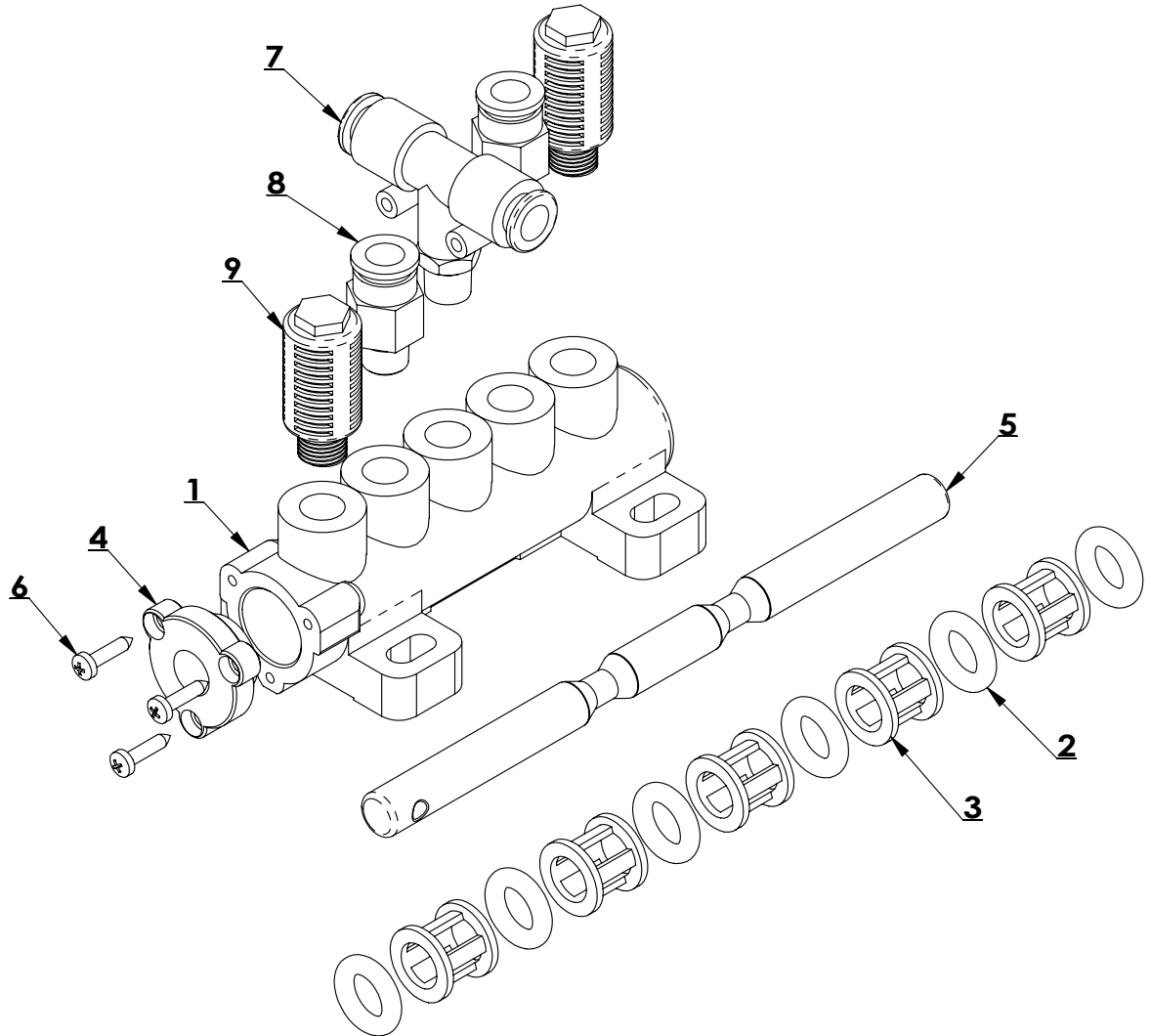
| ITEM | PART. No | DESCRIPTION. | QT. Y |
|------|----------|------------------------|-------|
| 41 | GB93-4 | STANDARD SPRING WASHER | 1 |
| 42 | GB93-5 | STANDARD SPRING WASHER | 2 |
| 43 | GB93-6 | STANDARD SPRING WASHER | 22 |
| 44 | GB95-10 | FLAT WASHER | 6 |
| 45 | GB95-4 | FLAT WASHER | 1 |
| 46 | GB95-6 | FLAT WASHER | 20 |



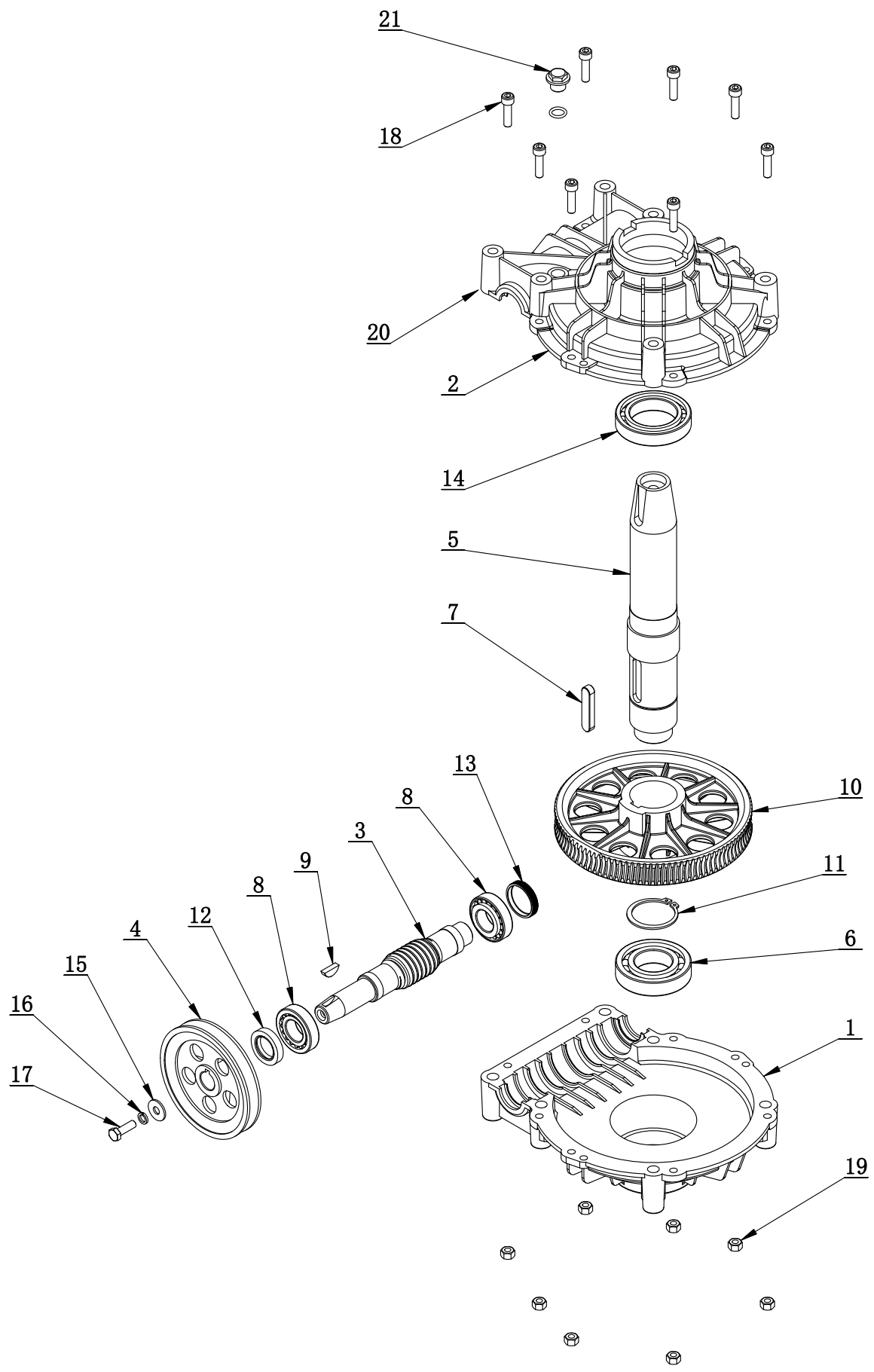
| ITEM | PART. No | DESCRIPTION. | QT. Y |
|------|--------------------|---------------------------|-------|
| 1 | CT-D-1110001 | VALVE BODY | 1 |
| 2 | CT-D-1110003 | O-RING | 6 |
| 3 | CT-D-1110004 | SPACER | 5 |
| 4 | CT-D-1110005 | VALVE CAP | 1 |
| 5 | CT-D-2600001 | VALVE ROD | 1 |
| 6 | GB879. 1-4×20 | PIN | 1 |
| 7 | GB95-10 | FLAT WASHER | 1 |
| 8 | GB845-ST2.9×13 H C | SCREW | 3 |
| 9 | FPD 8-01 | MALE RUN TEE | 1 |
| 10 | FPC 8-01 | MALE STRAIGHT | 2 |
| 11 | FSK 01 | PLASTIC PARTICLE SILENCER | 2 |



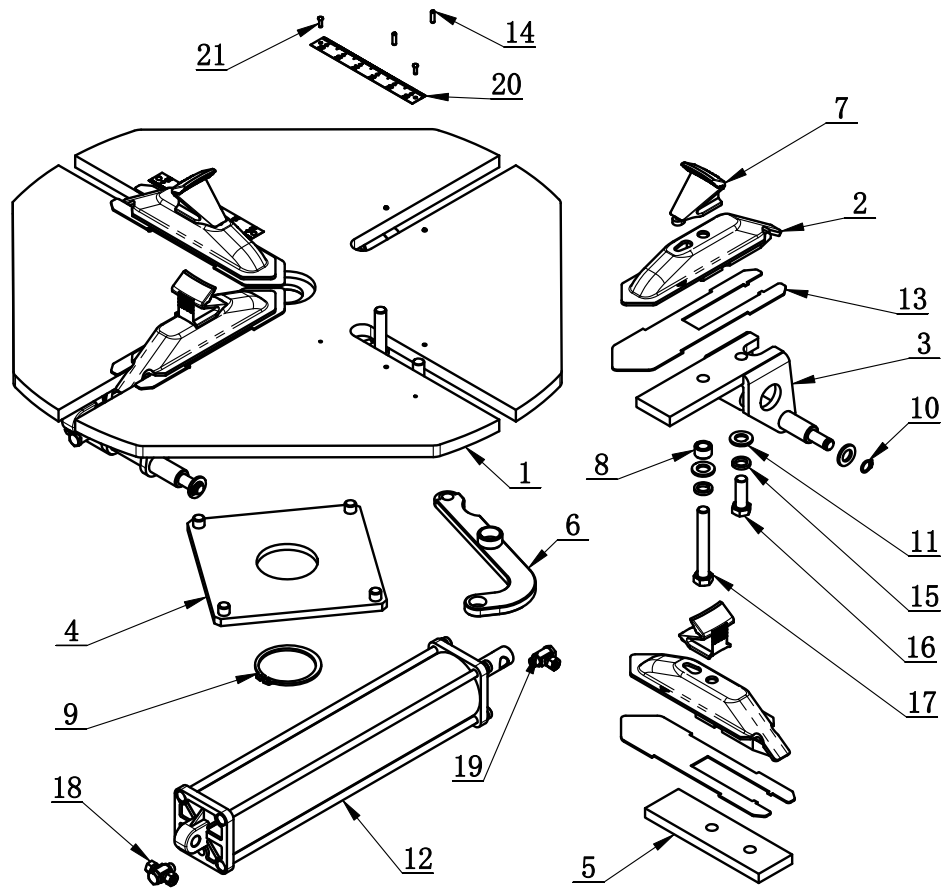
| ITEM | PART. No | DESCRIPTION. | QT |
|------|--------------------|------------------------------|----|
| 1 | CT-D-1110001 | VALVE BODY | 1 |
| 2 | CT-D-1110003 | O-RING | 6 |
| 3 | CT-D-1110004 | SPACER | 5 |
| 4 | CT-D-1110005 | VALVE CAP | 1 |
| 5 | CT-D-2600003 | VALVE ROD | 1 |
| 6 | GB845-ST2.9×13 H C | SCREW | 3 |
| 7 | FPL 8-01 | INSERT ELBOW $\Phi 8$, R1/8 | 1 |
| 8 | FPC 8-01 | MALE STRAIGHT | 2 |
| 9 | FSK 01 | PLASTIC PARTICLE SILENCER | 2 |



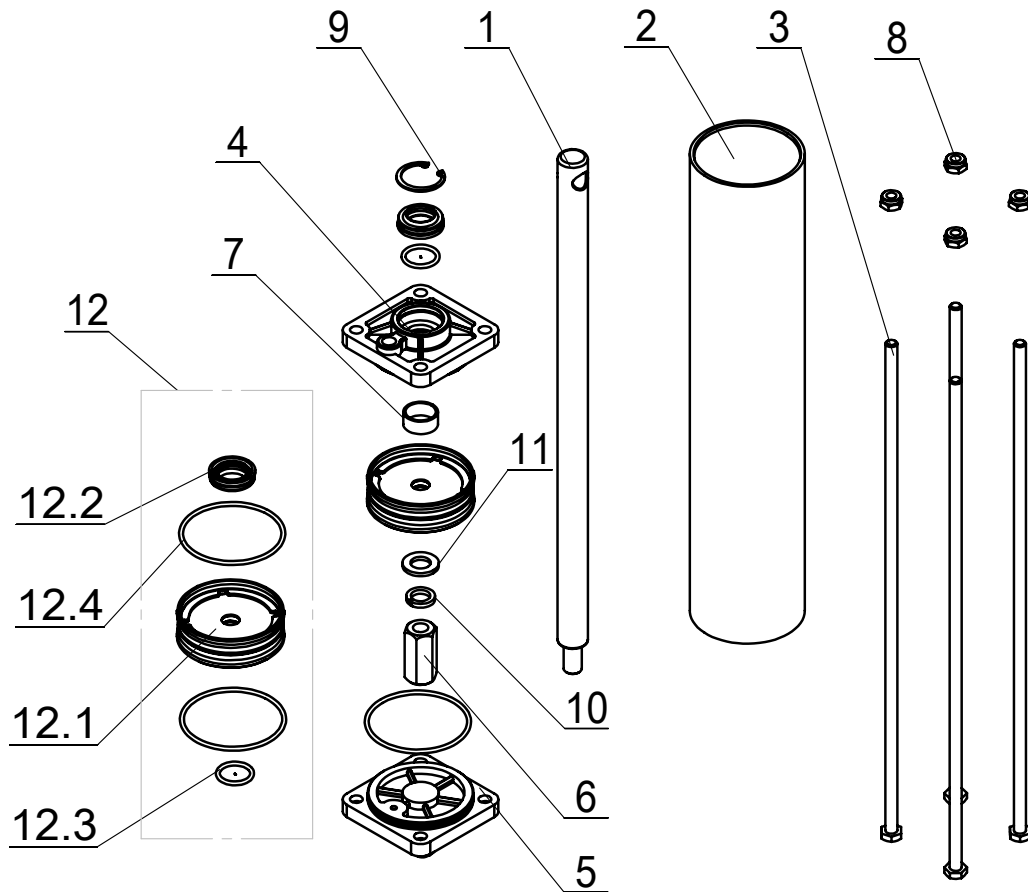
| ITEM | PART.No | DESCRIPTION. | QT.Y |
|------|--------------------|---------------------------|------|
| 1 | CT-D-1110001 | VALVE BODY | 1 |
| 2 | CT-D-1110003 | O-RING | 6 |
| 3 | CT-D-1110004 | SPACER | 5 |
| 4 | CT-D-1110005 | VALVE CAP | 1 |
| 5 | CT-D-2600003 | VALVE ROD | 1 |
| 6 | GB845-ST2.9×13 H C | SCREW | 3 |
| 7 | FPB 8-01 | MALE BRANCH TEE | 1 |
| 8 | FPC 8-01 | MALE STRAIGHT | 2 |
| 9 | FSK 01 | PLASTIC PARTICLE SILENCER | 2 |



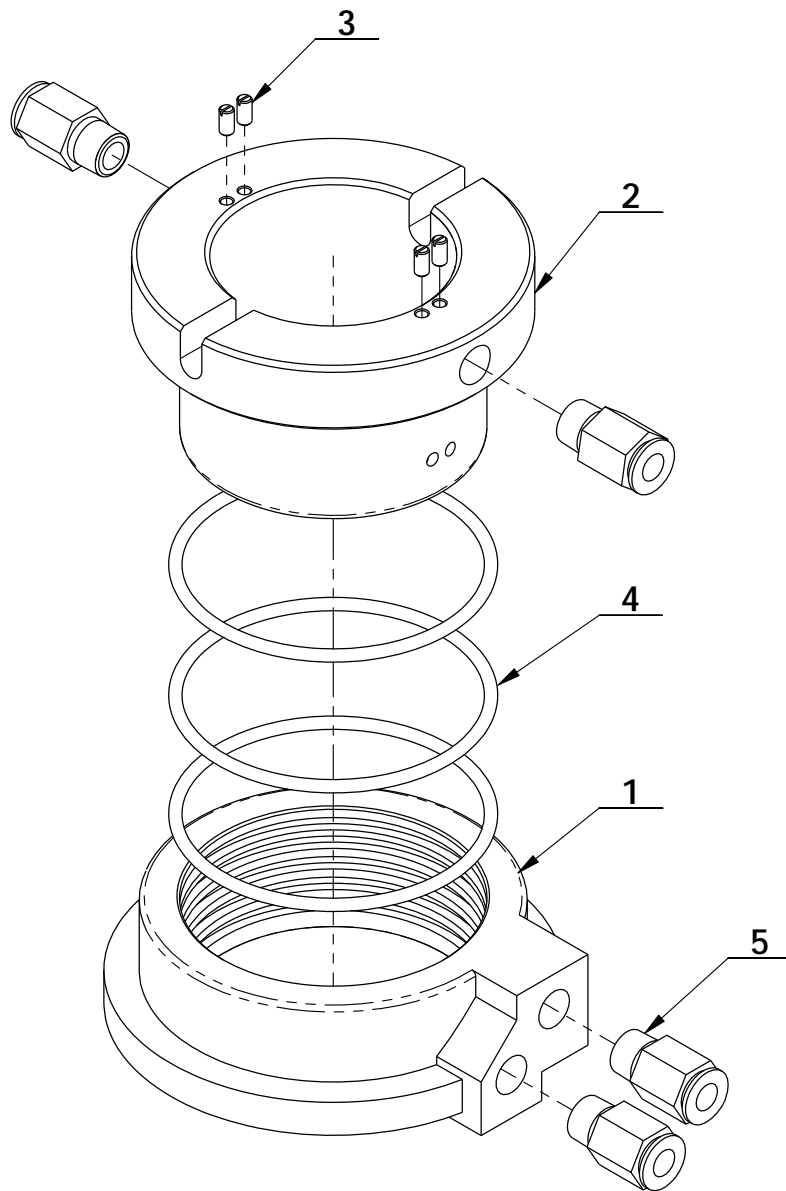
| ITEM | PART. No | DESCRIPTION. | QT. Y |
|------|-------------------------|--|-------|
| 1 | CT-J-0000005 | GEARBOX LOWER | 1 |
| 2 | CT-J-0000006 | GEARBOX TOP | 1 |
| 3 | CT-J-0000004 | WORM ROD | 1 |
| 4 | CT-J-0000008 | BELT PULLEY | 1 |
| 5 | CT-J-0000001 | WORM SHAFT | 1 |
| 6 | GB276-6208 | BEARING | 1 |
| 7 | GB1096-12×8×56 | COMMON FLAT KEY | 1 |
| 8 | GB297-30205 | BEARING | 2 |
| 9 | GB1099. 1-6×9×22 | COMMON SEMI-CIRCULAR KEY | 1 |
| 10 | CT-J-0000003 | WORM | 1 |
| 11 | GB894. 1-50 | RETAINING RING A-TYPE | 1 |
| 12 | FB25-40 GB13871. 92 | SEALED RING | 1 |
| 13 | CT-J-0100000 | CAP | 1 |
| 14 | GB276-6010 | DEEP GROOVE BALL BEARINGS | 1 |
| 15 | GB96. 2-8 | LARGE WASHER C GRADE | 1 |
| 16 | GB93-8 | STANDARD SPRING WASHER | 1 |
| 17 | GB5783-M8×25 | HEXANGULAR BOLT | 1 |
| 18 | GB70. 1-M8×30 | INNER HEXA CYLINDRICAL SCREW | 8 |
| 19 | GB41-M8 | HEXANGULAR NUT | 8 |
| 20 | GB3452. 1-13. 2×2. 65-G | HYDRAULIC-PNEUMATIC RUBBER O-RING G TYPE | 1 |
| 21 | TC-10-1400013 | BOLT | 1 |



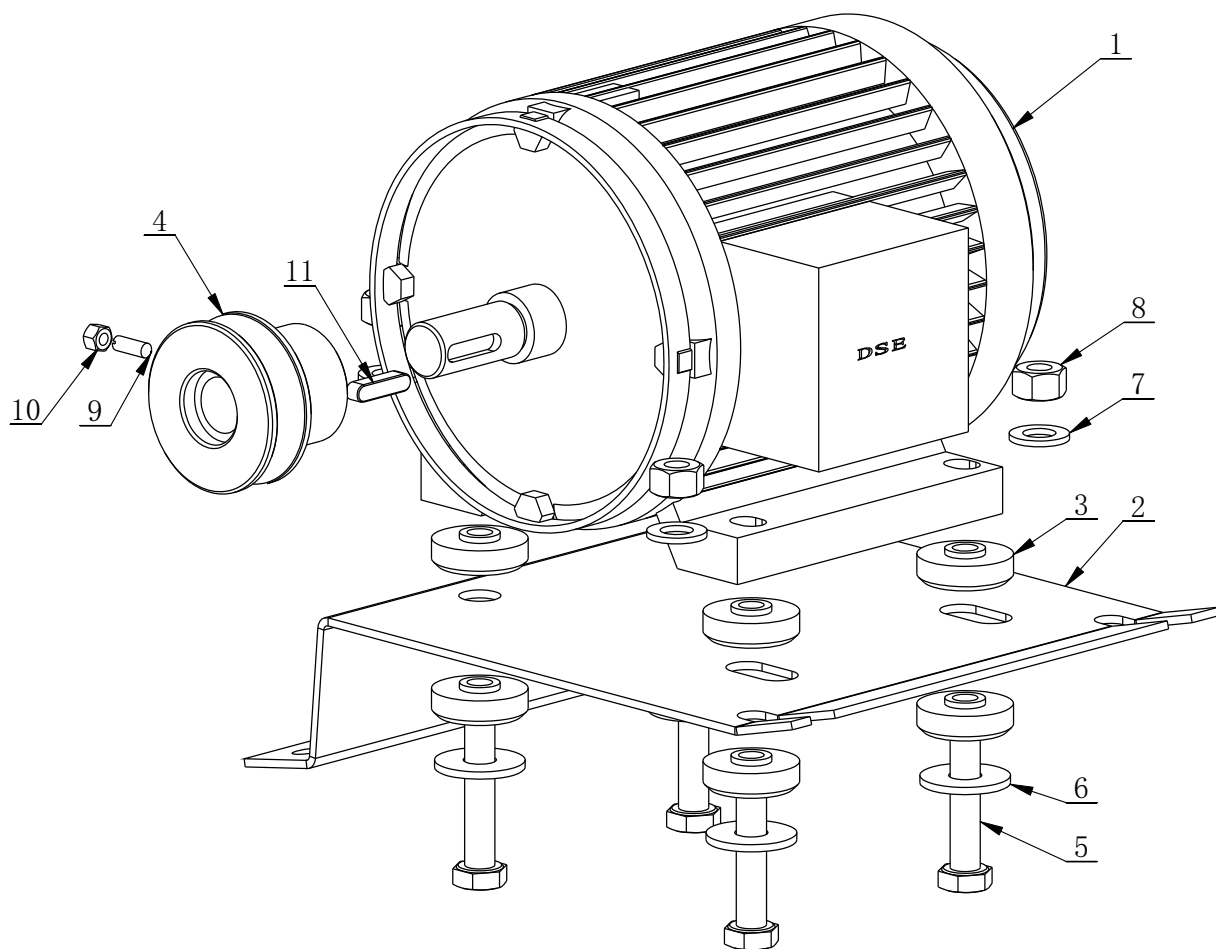
| ITEM | PART. No | DESCRIPTION. | QT. Y |
|------|---------------|--|-------|
| 1 | CT-Y-1610000 | TURNTABLE | 1 |
| 2 | CT-Y-0710000 | SLIDE COVER | 4 |
| 3 | CT-Y-1140000 | BRACKET-CYLINDER | 2 |
| 4 | CT-Y-0150000 | SQUARE TURNTABLE | 1 |
| 5 | CT-Y-1100001 | PRESS BOARD | 2 |
| 6 | CT-Y-1150000 | CONNECTION PLATE | 4 |
| 7 | CT-Y-0100002 | CLAMP | 4 |
| 8 | CT-Y-0100003 | SPACER | 4 |
| 9 | GB894. 1-65 | SHAFT ELATIC BIG RETAINING RING A-TYPE | 1 |
| 10 | GB894. 1-12 | SHAFT ELATIC BIG RETAINING RING A-TYPE | 4 |
| 11 | GB95-12 | FLAT WASHER | 12 |
| 12 | CT-Y-1430000 | CYLINDER ASSEMBLY | 2 |
| 13 | CT-Y-1400001 | WEAR-RESISTANCE SPACER | 4 |
| 14 | GB879. 1-4×14 | ELASTIC CYLINDRICAL PIN HEAVY | 8 |
| 15 | GB93-12 | STANDARD SPRING WASHER | 8 |
| 16 | GB5783-M12×35 | HEXANGULAR BOLT | 4 |
| 17 | GB5782-M12×85 | HEXANGULAR BOLT | 4 |
| 18 | CT-Y-0100009 | HINGE ELBOW Φ6 | 2 |
| 19 | CT-Y-0100007 | HINGE ELBOW Φ6 R1/8" | 2 |
| 20 | CT-Y-1600001 | SCALE | 2 |
| 21 | GB827-3×10 | LABEL RIVET | 4 |



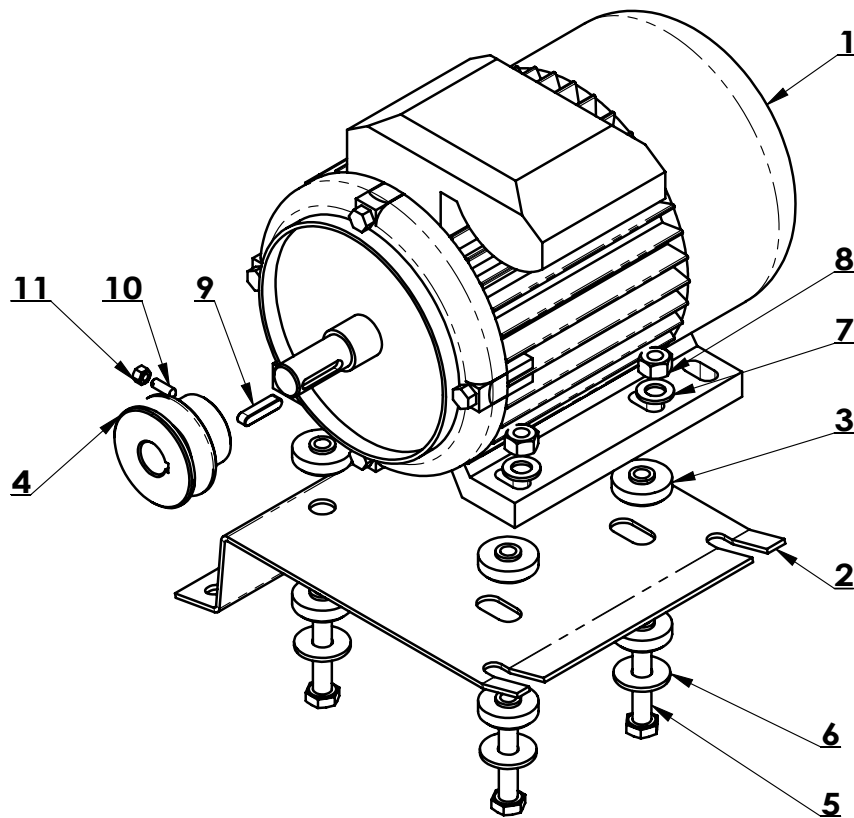
| ITEM | PART.NO | DESCRIPTION | QT |
|------|--------------------|--|----|
| 1 | CT-Y-1120001 | SHAFT-CYLNDR | 1 |
| 2 | CT-Y-1120002 | SLEEVE-CYLNDR 70 | 1 |
| 3 | CT-Y-1120003 | BOLT | 4 |
| 4 | CT-Y-0160002 | FRONT COVER | 1 |
| 5 | CT-Y-0160003 | REAR COVER | 1 |
| 6 | CT-Y-1430001 | AN ELONGATED NUT | 1 |
| 7 | JH1 2010 | BEARING-SLIDE | 1 |
| 8 | GB889.1-M8 | 1-TYPE PREVAILING TORQUE TYPE HEXAGON LOCK NUT | 4 |
| 9 | GB893.1-30 | RETAINING RING | 1 |
| 10 | GB93-12 | STANDARD SPRING WASHER | 1 |
| 11 | GB95-12 | FLAT WASHER | 1 |
| 12 | CT-Y-1121000 | CYLINDER SEALING PARTS ASSEMBLY | 1 |
| 12.1 | CT-Y-0160007 | SEAL-ROD,CYLNDR | 1 |
| 12.2 | CT-Y-0161000 | PISTON-W/WSHR,ASSY | 1 |
| 12.3 | GB3452.1-20×2.65 | RUBBER O-RING | 1 |
| 12.4 | GB3452.1-65×2.65-G | HYDRAULIC-PNEUMATIC RUBBER O-RING G TYPE | 2 |



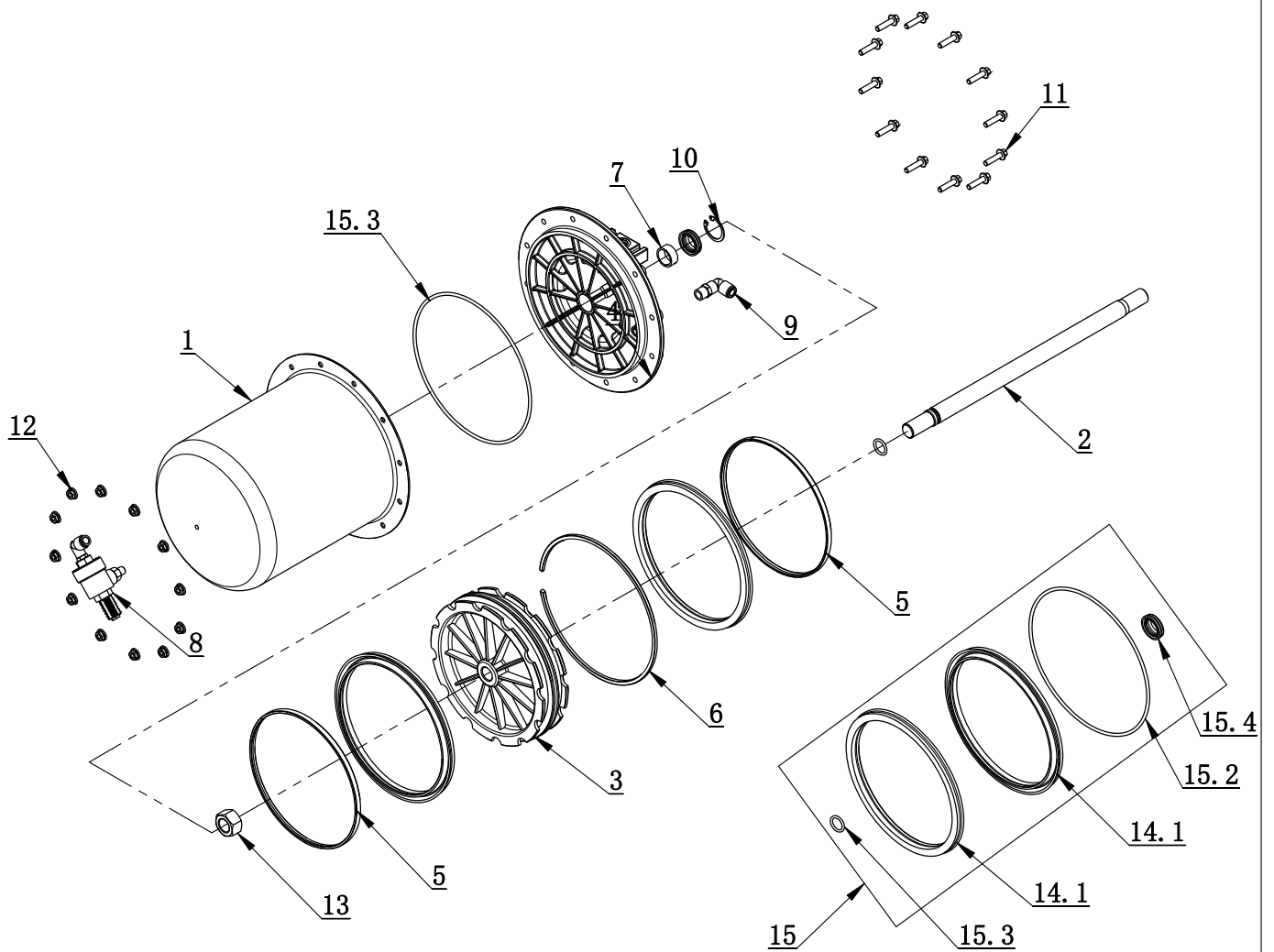
| ITEM | PART. No | DESCRIPTION. | QT. Y |
|------|----------------------|--|-------|
| 1 | CT-Q-1000001 | AIR GUIDE EXTERNAL BUSHING | 1 |
| 2 | CT-Q-1000002 | AIR GUIDE ROTATION BUSHING | 1 |
| 3 | GB73-M3×6 | SLOTTED FLATTEN HEAD SET SCREW | 4 |
| 4 | GB3452. 1-60×2. 65-G | HYDRAULIC-PNEUMATIC RUBBER O-RING G TYPE | 3 |
| 5 | FPC 6-01 | MALE STRAIGHT | 4 |



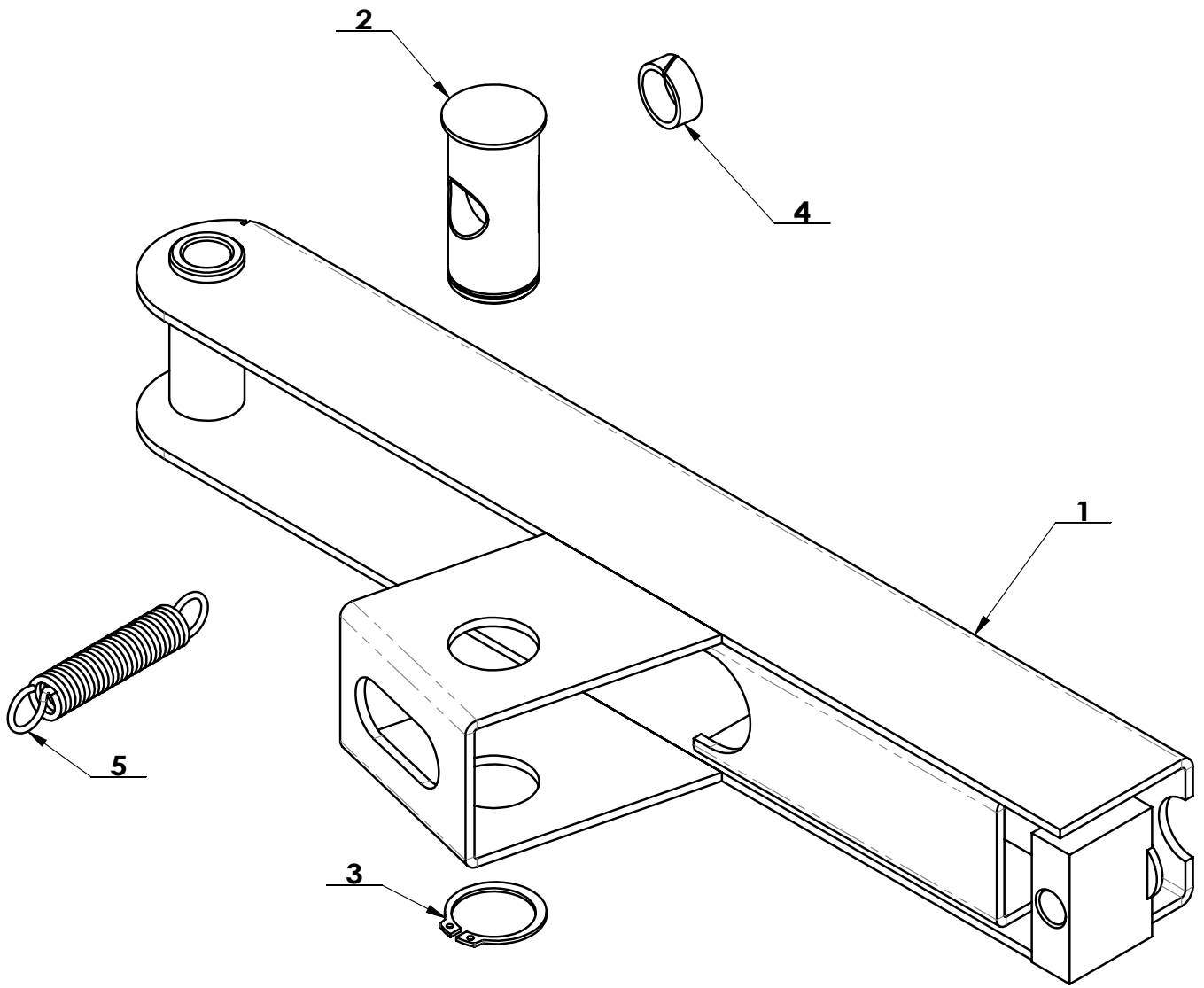
| ITEM | PART. No | DESCRIPTION. | QT. Y |
|------|-------------------|--|-------|
| 1 | CT-DJ-0034122 | MOTOR (0.75KW 380V 50Hz 3P) | 1 |
| 2 | CT-DJ-0000001 | MOTOR SUPPORT | 1 |
| 3 | CT-DJ-0000002 | RUBBER WASHER 220V MOTOR BELT PULLEY (Φ58X40) | 8 |
| 4 | CT-DJ-0000003 | | 1 |
| 5 | GB5781-M10 × 50 | HEXANGULAR BOLT | 4 |
| 6 | GB96. 2-10 | LARGE WASHER C GRADE | 4 |
| 7 | GB95-10 | FLAT WASHER | 4 |
| 8 | GB41-M10 | HEXANGULAR NUT | 4 |
| 9 | GB71-M5 × 16 | SLOTTED CONIC HEAD SET SCREW | 1 |
| 10 | GB41-M5 | HEXANGULAR NUT | 1 |
| 11 | GB1096-6 × 6 × 25 | COMMON FLAT KEY | 1 |



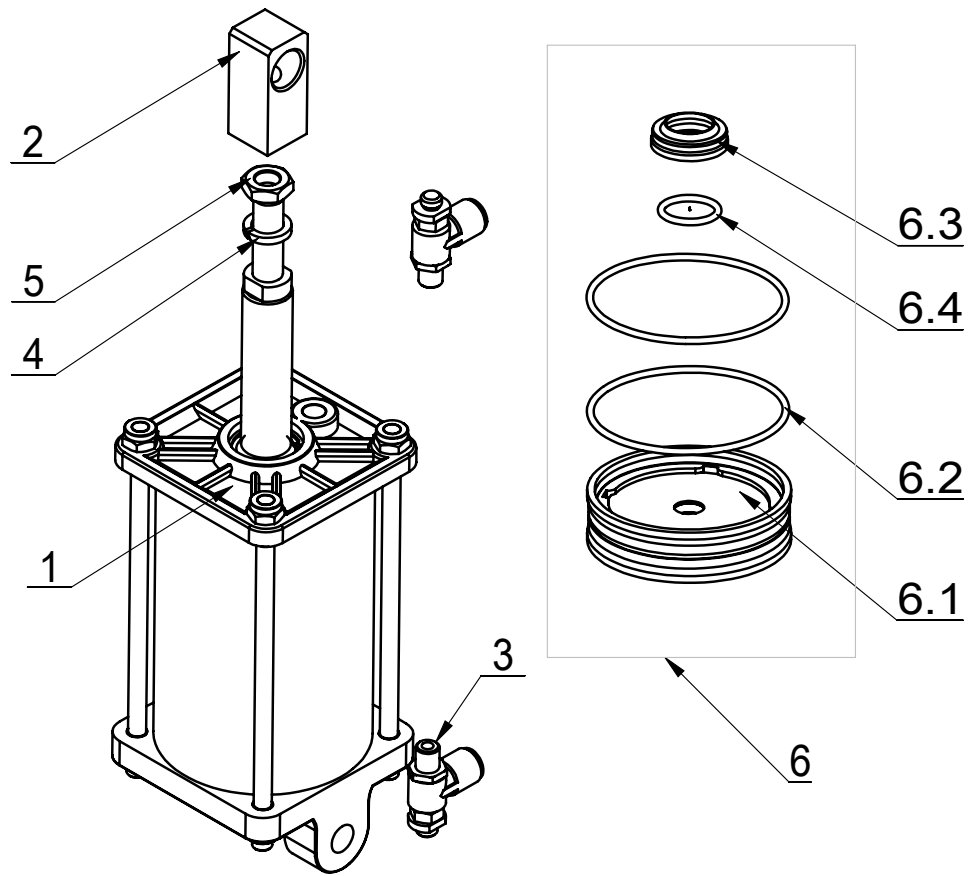
| ITEM | PART. No | DESCRIPTION. | QT. Y |
|------|---------------|-------------------|-------|
| 1 | CT-DJ-0018112 | MOTOR | 1 |
| 2 | CT-DJ-0000001 | MOTOR SUPPORT | 1 |
| 3 | CT-DJ-0000002 | RUBBER WASHER | 8 |
| 4 | CT-DJ-0000003 | MOTOR BELT PULLEY | 1 |
| 5 | GB5781-M10×50 | BOLT | 4 |
| 6 | GB96.2-10 | WASHER | 4 |
| 7 | GB95-10 | FLAT WASHER | 4 |
| 8 | GB41-M10 | NUT | 4 |
| 9 | GB1096-6×6×28 | KEY | 1 |
| 10 | GB71-M5×16 | SCREW | 1 |
| 11 | GB41-M5 | NUT | 1 |



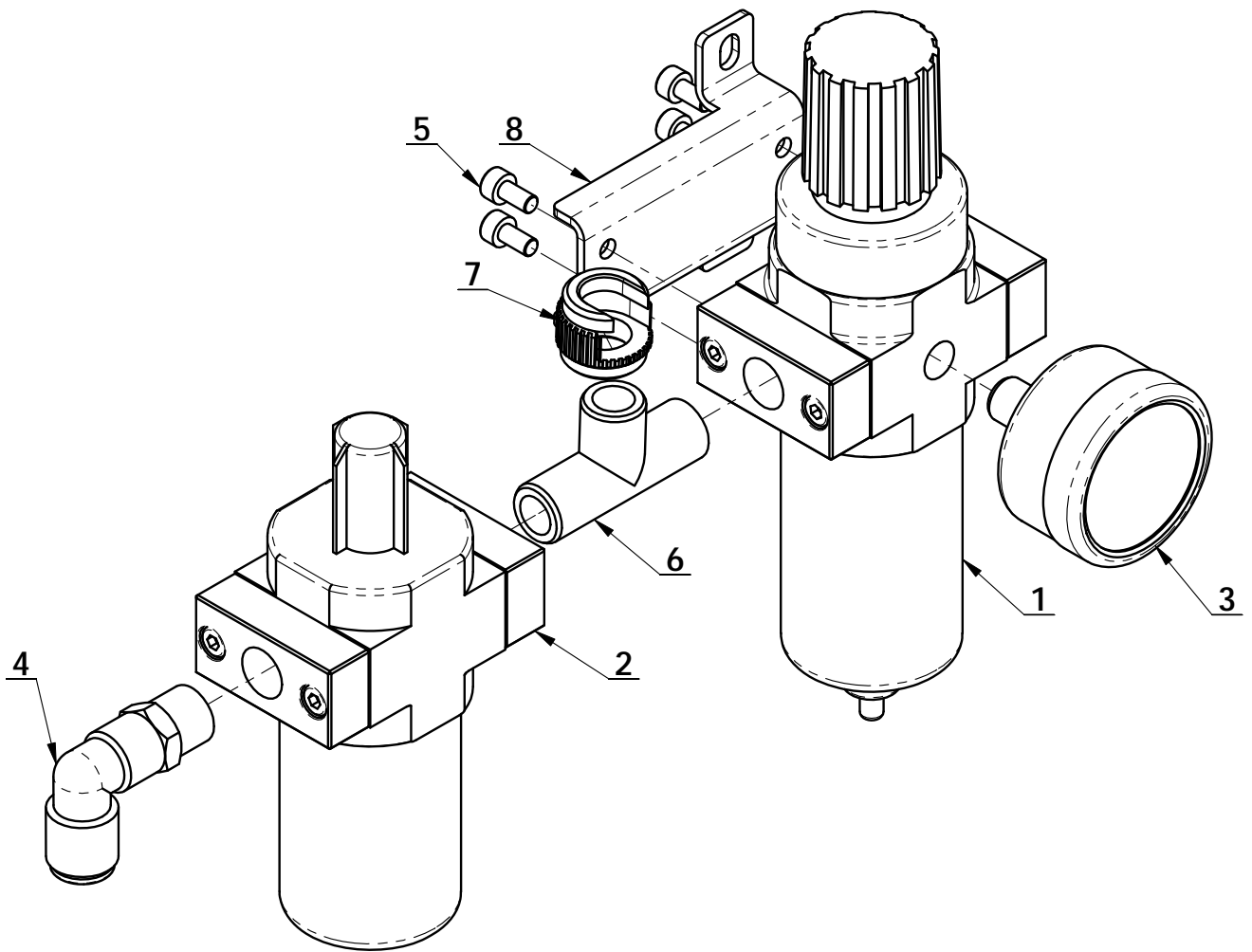
| ITEM | PART. No | DESCRIPTION. | QT. Y |
|------|-------------------------------|--|-------|
| 1 | CT-LS-1100002 | CYLINDER BODY | 1 |
| 2 | CT-LS-1100001 | CYLINDER PISTON ROD | 1 |
| 3 | CT-LS-1100003 | PISTON | 1 |
| 4 | CT-LS-1100004 | CYLINDER COVER | 1 |
| 5 | CT-LS-1100006 | CLAMP RING | 2 |
| 6 | CT-LS-1100007 | SUPPORT RING | 1 |
| 7 | CT-LS-1100008 | GUIDER SPACER | 1 |
| 8 | CT-LS-1320000 | QUICK DEFLATE VALVE | 1 |
| 9 | FPL 8-02 | INSERT ELBOW $\Phi 8$, R1/4 | 1 |
| 10 | GB893.2-30 | RETAINING RING | 1 |
| 11 | GB16674.1-M6 \times 25 | HEXA FLANGE BOLT | 12 |
| 12 | GB6177.1-M6 | NUT | 12 |
| 13 | GB6171- M18 \times 1.5 | NUT | 1 |
| 14 | CT-LS-1110000 | CYCLINDER SEALING PARTS ASSEMBLY | 1 |
| 14.1 | CT-LS-1100009 | Y-RING | 2 |
| 14.2 | GB3452.1-185 \times 3.55-G | O-RING G TYPE | 1 |
| 14.3 | GB3452.1-15.5 \times 2.65-G | HYDRAULIC-PNEUMATIC RUBBER O-RING G TYPE | 1 |
| 14.4 | CT-Y-0160007 | SEAL-ROD, CYLNDR | 1 |



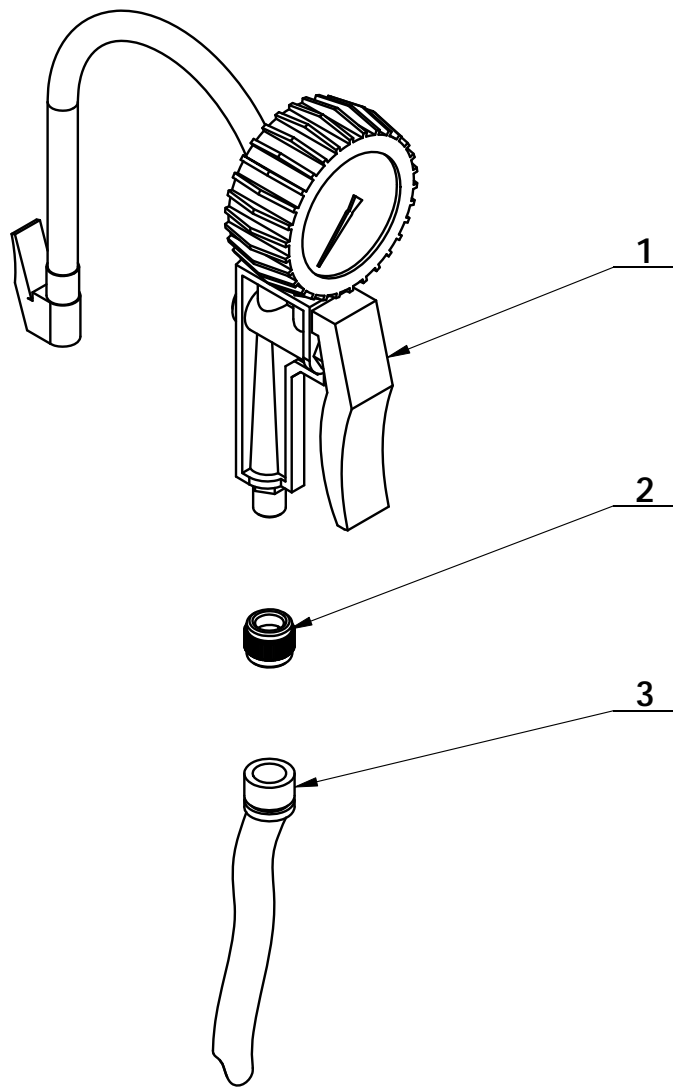
| ITEM | PART. No | DESCRIPTION. | QT. Y |
|------|--------------|--|-------|
| 1 | CT-B-4100000 | BEAD BREAKING ARM ASSEMBLY | 1 |
| 2 | CT-B-4000001 | BEAD BREAKING ARM SLIDE BUSHING | 1 |
| 3 | GB894. 1-34 | SHAFT ELATIC BIG RETAINING RING A-TYPE | 1 |
| 4 | CT-B-2000001 | SLIDE SPACER | 1 |
| 5 | CT-B-4000003 | SPRING | 1 |



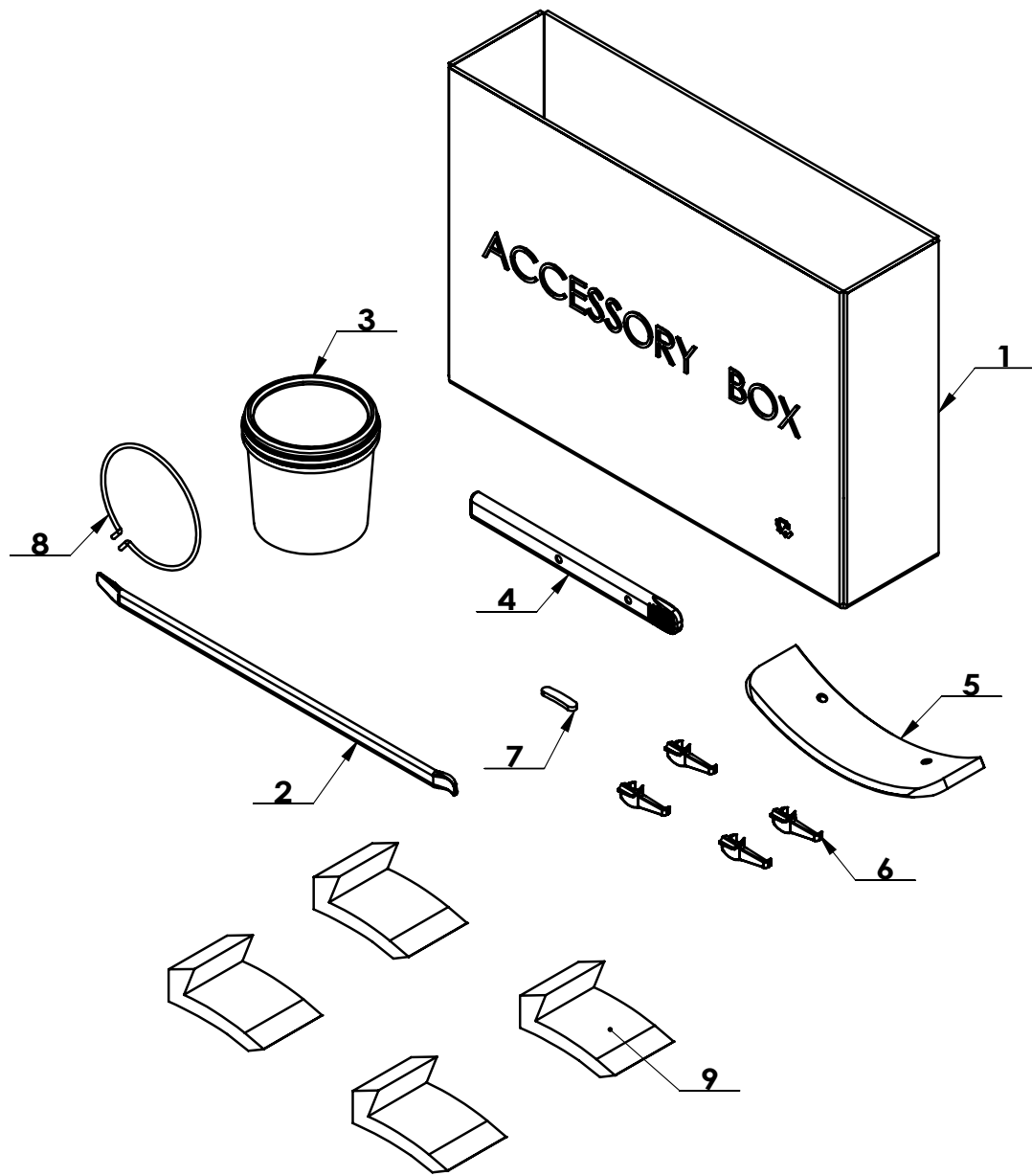
| ITEM | PART.NO | DESCRIPTION | QT |
|------|--------------------|----------------------------------|----|
| 1 | CT-XD-3100000 | CYLINDER ASSEMBLY | 1 |
| 2 | CT-XD-1000004 | SHAFT CONNECTOR | 1 |
| 3 | FJSC 8-01 | ELBOW SPEED CONTROLLER | 2 |
| 4 | GB93-12 | STANDARD SPRING WASHER | 1 |
| 5 | GB6172.1-M12 | HEXANGULAR THIN NUT | 1 |
| 6 | CT-XD-2100000 | CYCLINDER SEALING PARTS ASSEMBLY | 1 |
| 6.1 | CT-Y-4120006 | PISTON | 1 |
| 6.2 | GB3452.1-75×2.65-G | RUBBER O-RING | 2 |
| 6.3 | CT-Y-0160007 | SEAL-ROD,CYLNDR | 1 |
| 6.4 | GB3452.1-20×2.65 | RUBBER O-RING | 1 |



| ITEM | PART. No | DESCRIPTION. | QT. Y |
|------|-----------------------|------------------------------|-------|
| 1 | CT-F-3000010 | OIL CPU | 1 |
| 2 | CT-F-3000020 | WATER CPU | 1 |
| 3 | CT-F-2000003 | PRESSURE GAUGE | 1 |
| 4 | FPL 8-02 | INSERT ELBOW $\Phi 8$, R1/4 | 1 |
| 5 | GB70. 1-M4 \times 8 | INNER HEXA CYLINDRICAL SCREW | 4 |
| 6 | PEH 02-02 | FAMALE UNION TEE | 1 |
| 7 | C-01-1500004 | OPEN NUT | 1 |
| 8 | CT-F-2000009 | AIR REGULATOR BRACKET | 1 |



| ITEM | PART. No | DESCRIPTION. | QT. Y |
|------|--------------|----------------|-------|
| 1 | CT-P-6000001 | INFLATING GUN | 1 |
| 2 | C-01-1500004 | OPEN NUT | 1 |
| 3 | CT-P-1000002 | INFLATION HOSE | 1 |



| ITEM | PART. No | DESCRIPTION. | QT |
|------|--------------|--------------------------|----|
| 1 | C-54-8000002 | ACCESSORY BOX | 1 |
| 2 | C-54-8000003 | 20INCH CROWBAR | 1 |
| 3 | C-54-8100000 | GREASE CONTAINER | 1 |
| 4 | C-54-8000019 | CROWBAR JACKET | 1 |
| 5 | C-90-1000013 | BEAD BREAKER BLADE COVER | 1 |
| 6 | C-54-1300014 | SHEATH | 4 |
| 7 | C-54-8000007 | TOOL HEAD TAIL WASHER | 1 |
| 8 | C-54-8000004 | BRACKET | 1 |
| 9 | C-54-8000005 | CLAMP PROTECTION COVER | 4 |