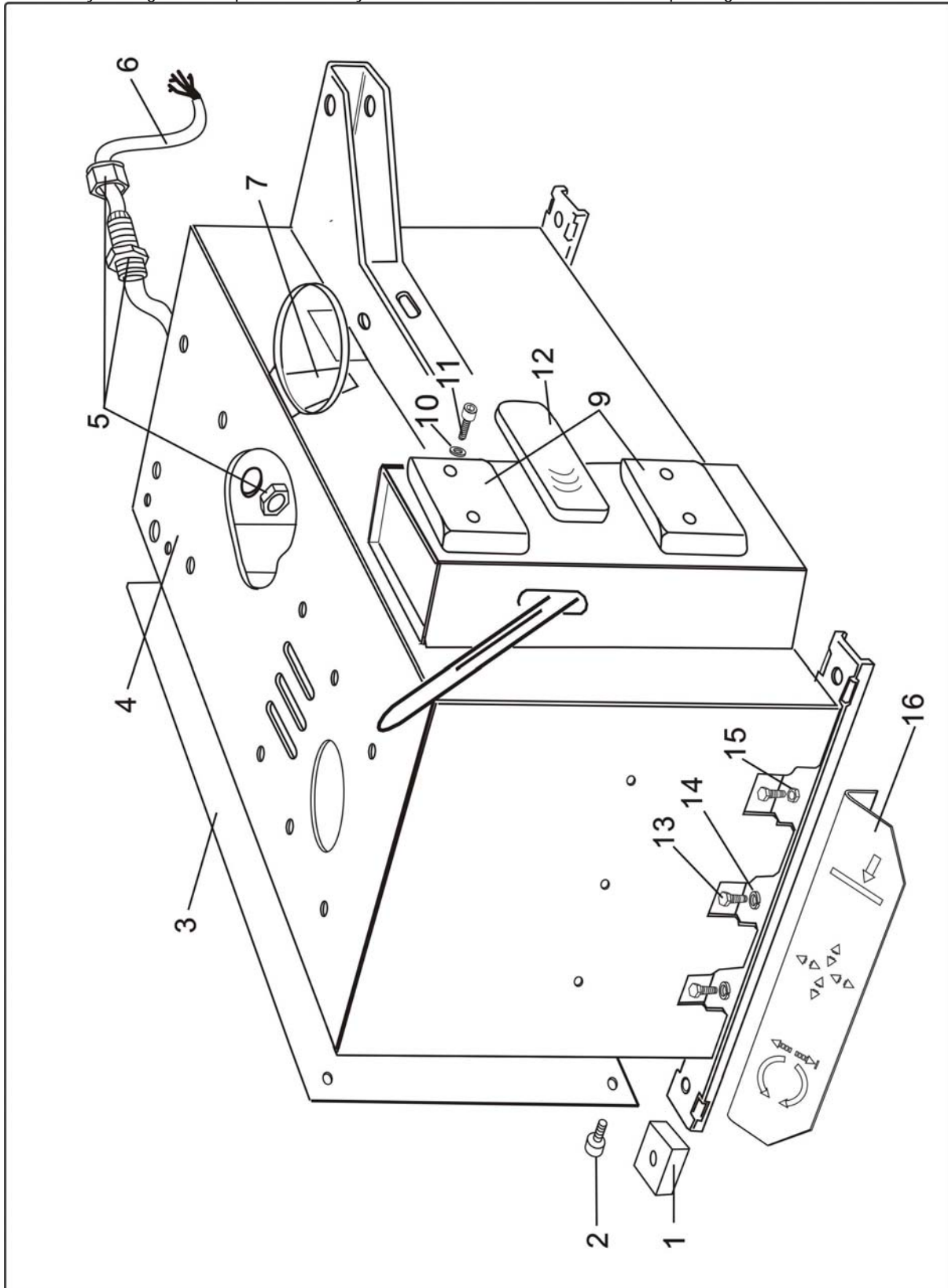
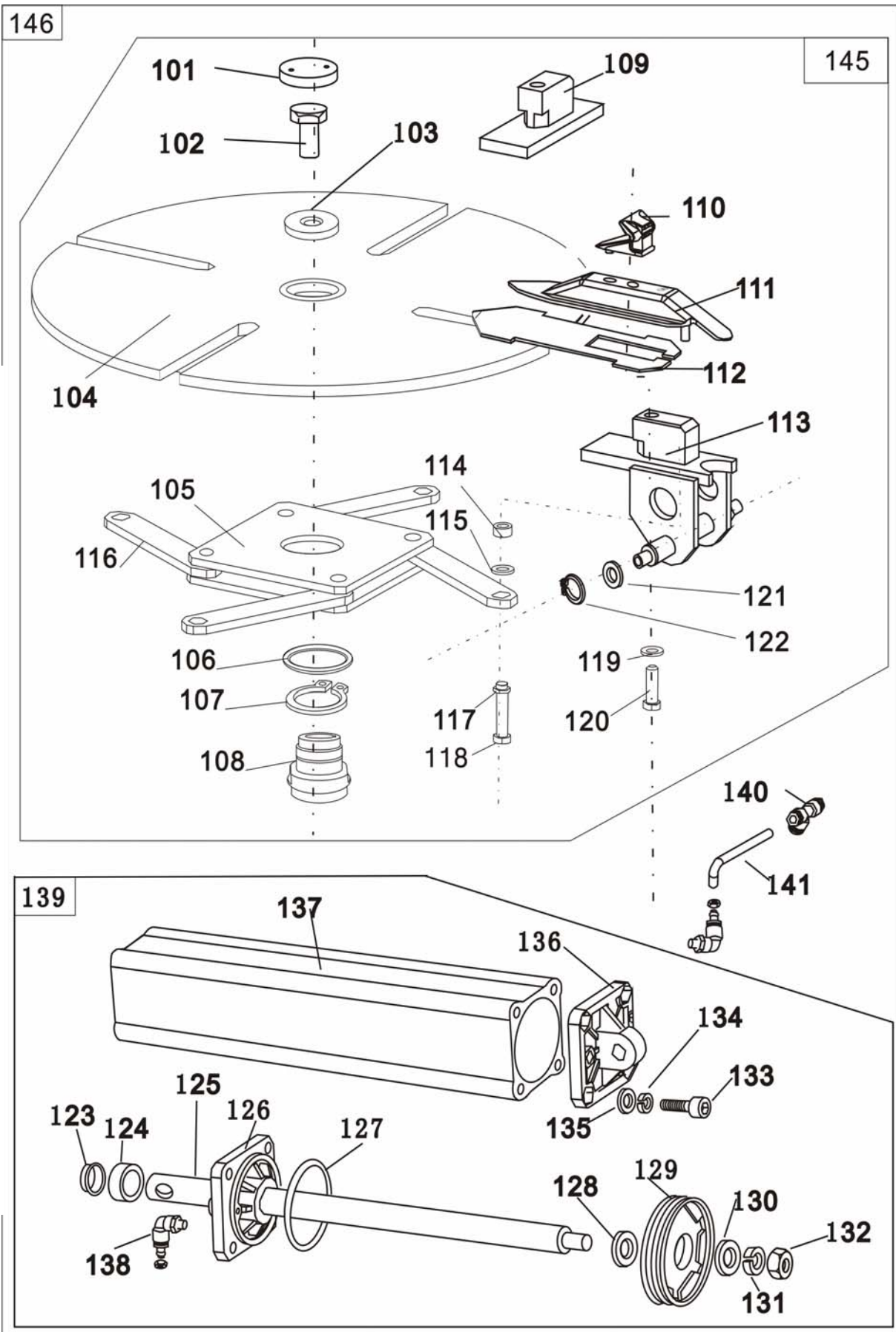


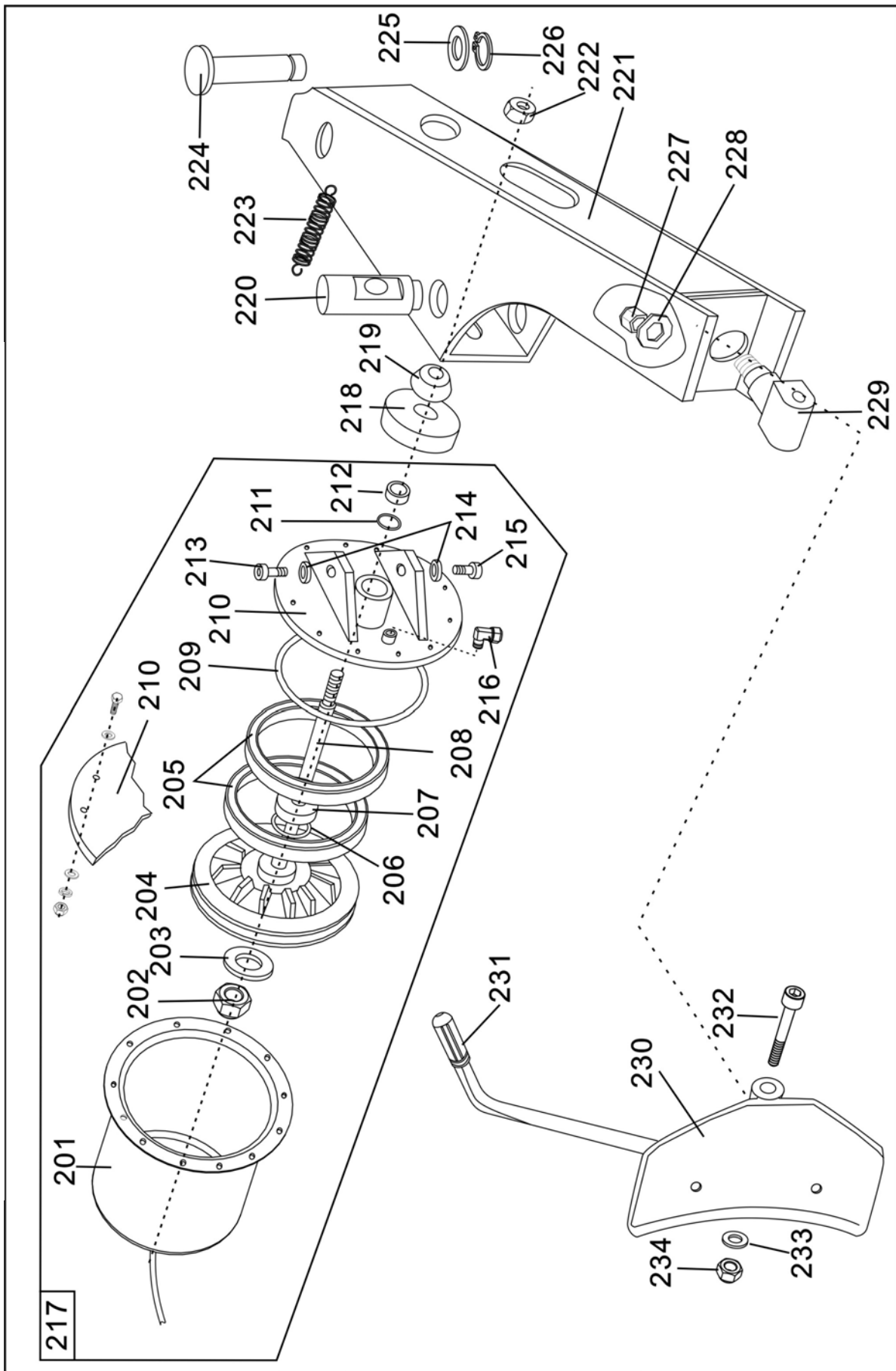
Parts List

This list is only for the reference of the maintenance personnel. The manufacturer will not be held responsible for any use other than the designed purpose.

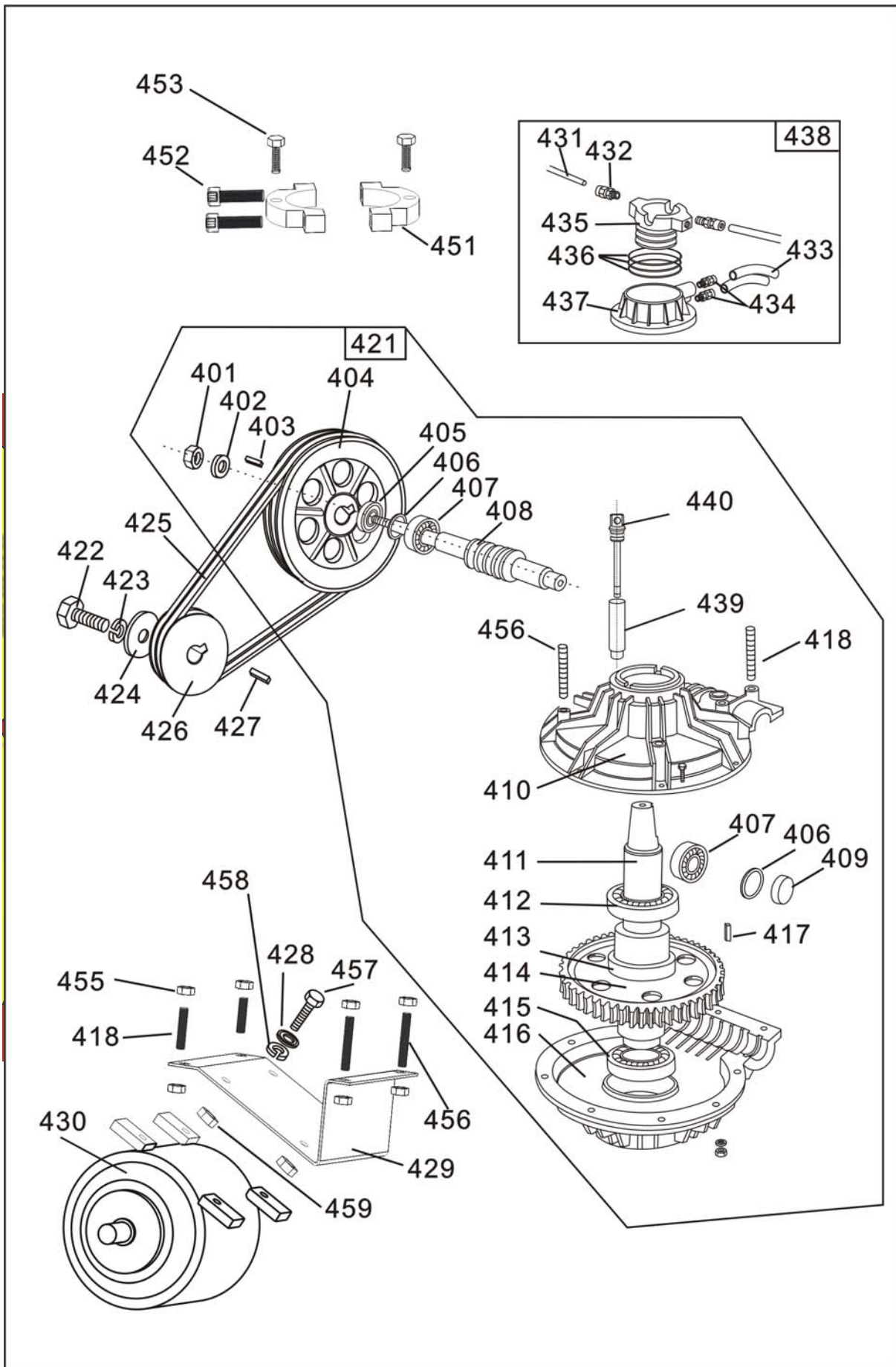
In case any damage occurs, please contact your dealer or LAUNCH with the corresponding codes in the list.



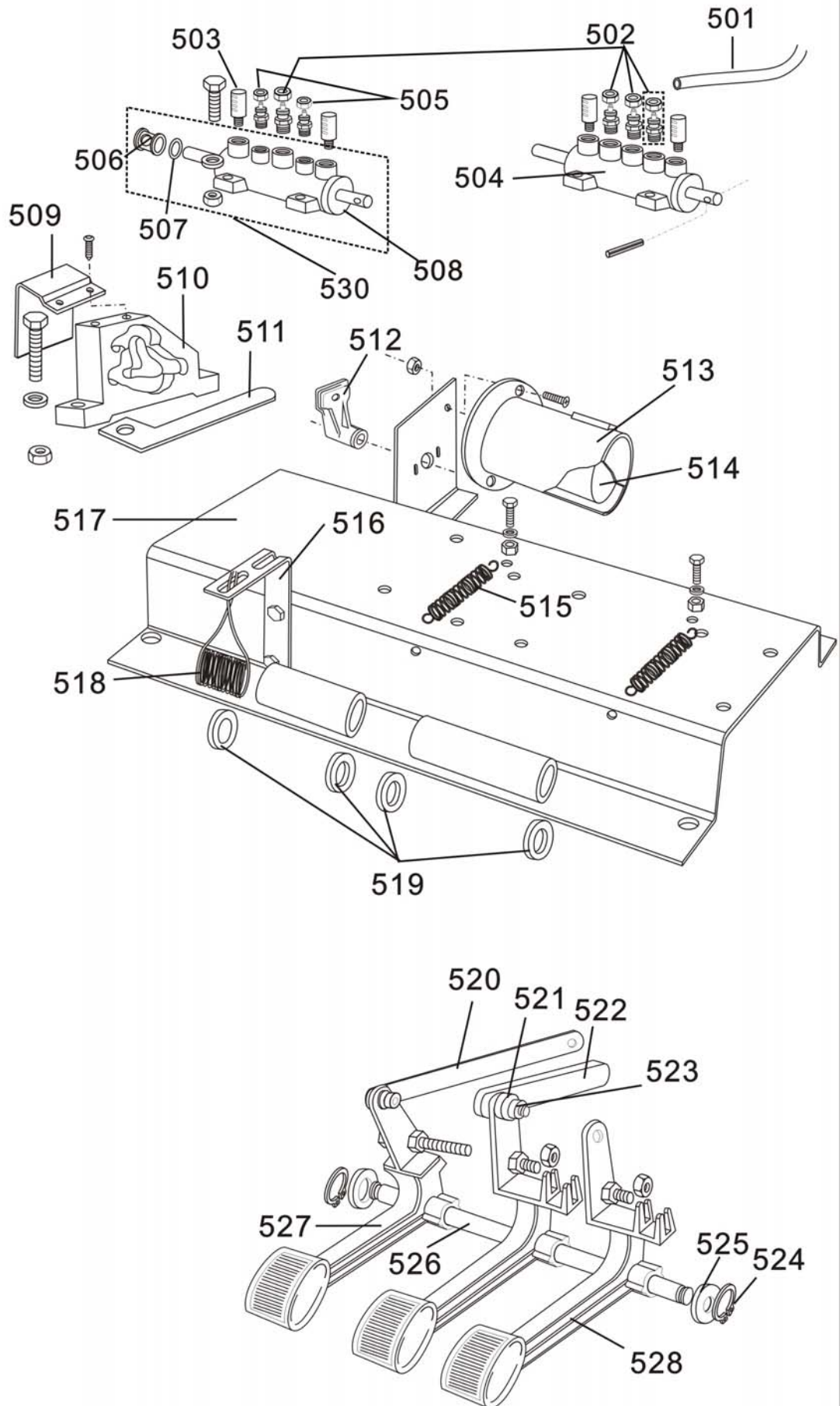


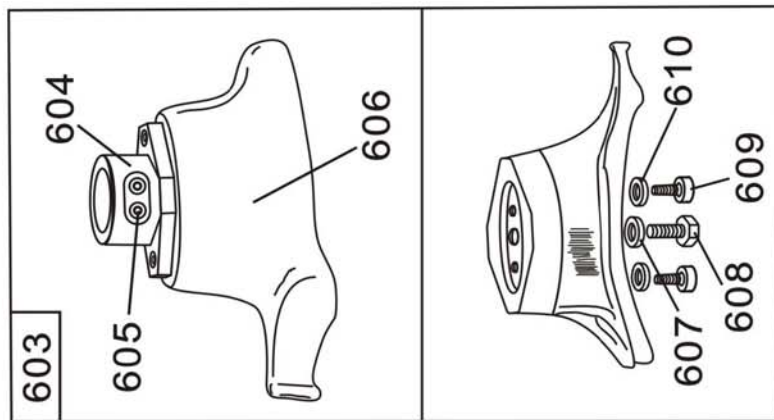
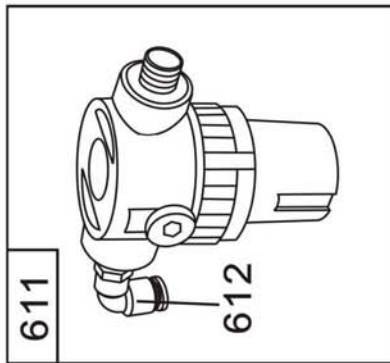
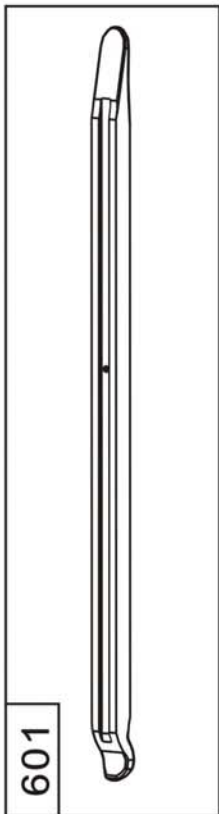
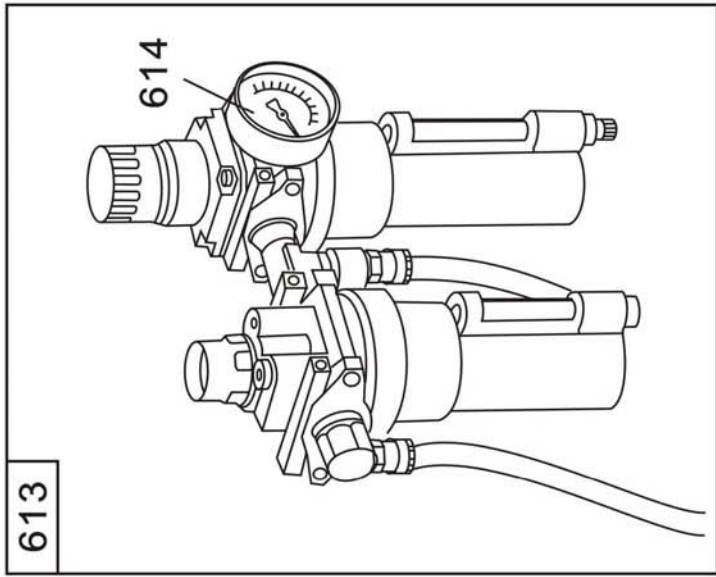
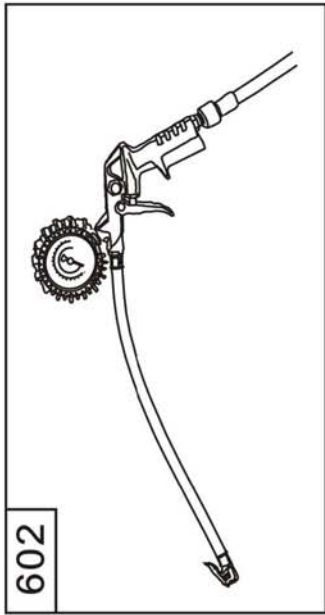






529





Note:

The wearing parts are indicated by *.

No.	Erp Code	Description
1	104130054	Pedal mat
2	103010326	Hexagon socket screw M6×12
3	201011862	Side plate
4	201011865	Cabinet
5	104010003	Cable clip
6	105010019	Cable
7	201011687	Hanger
8		
9	104130246	Rubber pad A
10	103040063	Plain washer φ6
11	103010313	Hexagon socket screw M6×25
12	104130262	Rubber pad B
13	103020075	Hexagon bolt M8×25
14	103040026	Spring washer φ8
15	103030061	Nut M8
16	201012268	Hood
101	104130013	Working deck cushion cover
102	103020071	Hexagon Bolt M16×40
103	201010190	Working deck washer
104	201012014	Turntable
105	201011905	Square rotary body
106	Y103200250	Square rotary mat
107	103050018	Circlip for shaft φ65
108	201011907	Working deck taper sleeve
109	Y201010213	Slide carriage B
110	201010211	Clamping jaw
111	Y103220086	Sliding mouse
112	201012015	Sliding plate
113	201010838	Slide carriage A
114	201011919	Connecting rod
115	103040112	Plain washer φ12
116	201012016	Connecting rod units
117	103040044	Spring washer φ12
118	103020164	Hexagon bolt M12×35
119	103040044	Spring washer φ12
120	103020062	Hexagon bolt M12×60
121	103050003	Circlip for shaft φ12
122	103040112	Plain washer φ12
123	104130082	Y Sealing ring 28×20×5
124	202010068	Guide sleeve

125	201012017	Clamping cylinder piston rod
126	103220082	Front cover of clamping cylinder
*127	104130081	O Sealing ring $\phi 65 \times 2.65$
128	103040112	Plain washer $\phi 12$
129	104130053	Clamping cylinder piston
130	103040112	Plain washer $\phi 12$
*131	103040044	Spring washer light type $\phi 12$
132	103030061	Nut M8
133	103010327	Hexagon socket screw M8 \times 25
134	103040049	Spring washer $\phi 8$
135	103040064	Plain washer $\phi 8$
136	103230054	Back cover of clamping cylinder
137	103230178	Clamping cylinder body
138	103100244	Nut locking L joint
139	201021009	Clamping cylinder assembly
140	103100242	Nut 3-way pipe joint
141	104050033	Air compressing hose
145		Turntable assembly
146	201020976	Working deck assembly
201	Y103230037	Bead breaker cylinder body
202	103030106	Lock nut M16
203	103040117	Plain washer $\phi 16$
204	103230035	Bead breaker cylinder piston
*205	104130055	High & low lip ring
206	104130061	O Sealing ring $\phi 16 \times 2.65$
207	103040117	Plain washer $\phi 16$
208	201010172	Bead breaker cylinder piston rod
*209	104130060	O Sealing ring $\phi 180 \times 3.55$
210	103230168	Bead breaker cylinder cover
*211	104130079	O Sealing ring $\phi 19 \times 2.65$
212	202010068	Guide sleeve
213	201010179	Set screw
214	103040112	Plain washer $\phi 12$
215	201010179	Set screw
216	103100246	Nut locking L joint
217	201021001	Bead breaker cylinder assembly
218	104130052	Bead breaker cylinder pressure mat
219	202010060	Bead breaker buffer
220	201012020	Guide Roller
221	201011650	Bead breaker shoe arm
222	103030106	Lock nut M16
223	103110013	Tension spring

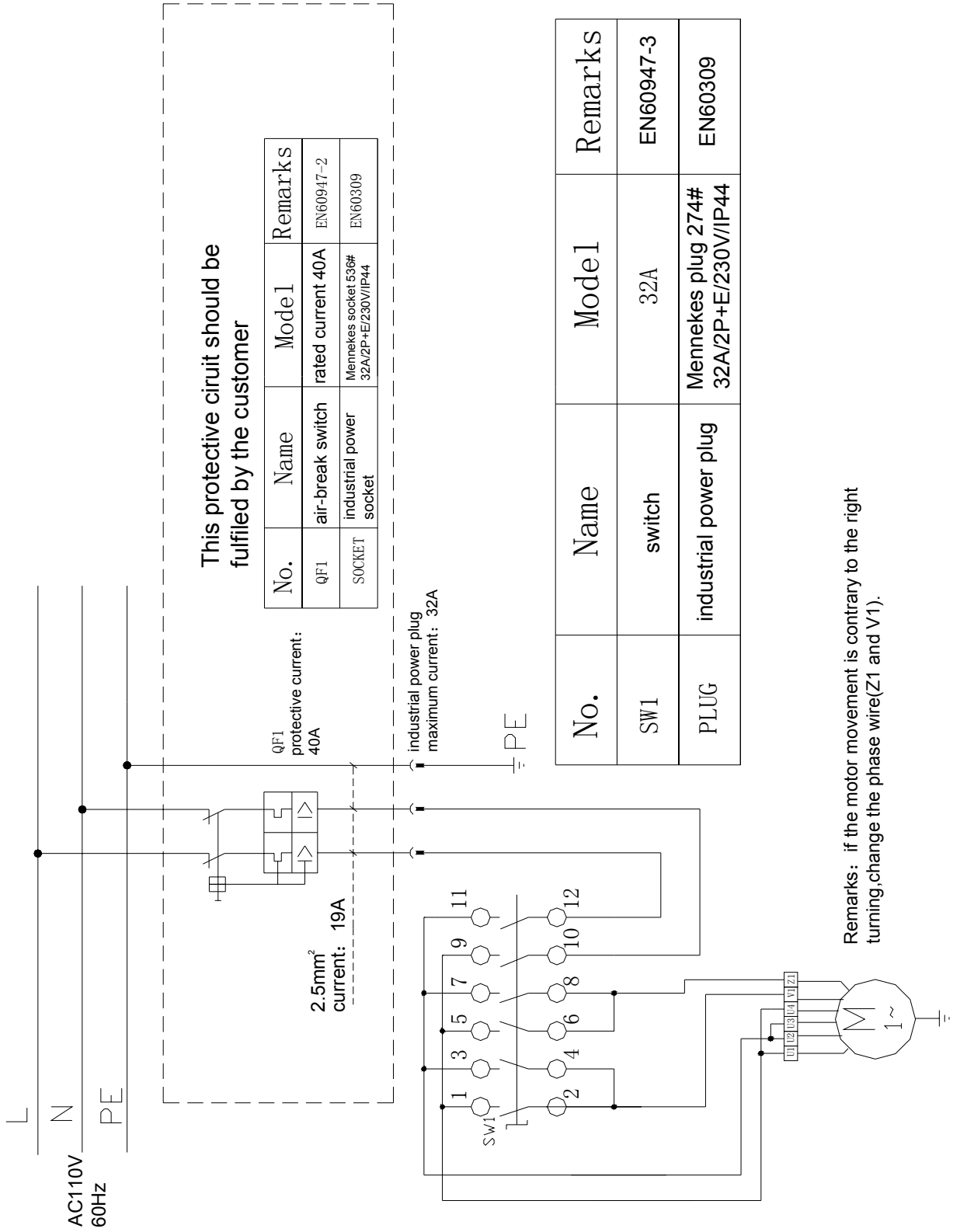
224	201011649	Shaft arm pin
225	103040065	Plain washer ϕ 22
226	103050004	Circlip for shaft ϕ 22
227	103030089	Nut M12
228	103040112	Plain washer ϕ 12
229	201010233	Universal joint
230	201011655	Bead breaker shoe
231	104130075	Bead breaker shoe handle cowl
232	103010282	Hexagon socket screw M12 \times 90
233	103040112	Plain washer ϕ 12
234	103030089	Lock nut M12
301	103010327	Hexagon socket screw M8 \times 25
302	104010272	Cap
303	201010221	Hexagonal column
304	103110058	Return spring
305	201011570	Swing arm
306	104070027	Cushion mat
307	103010401	Hexagon socket set screws with flat point M12 \times 12
308	Y103200295	Metal Mount/demount head
309	103200290	Hexagonal column locking handle
310	103050003	Circlip for shaft ϕ 12
311	201010230	Lock stem casing
312	201010227	Eccentric wheel
313	103010397	Hexagon socket screw M6 \times 16
314	104130106	Front cover of swing arm
315	201010244	Lock plate
316	103020076	Hexagon bolt M8 \times 80
317	104010267	Key A14 \times 40
318	201012051	Hexagon bolt M10 \times 50
319	201010260	Spring washer ϕ 10
320	103040098	Swing arm sleeve gasket
321	103040098	Plain washer ϕ 18
322	103030108	Lock nut
323	103020062	Hexagon bolt M12 \times 60
324	103040112	Plain washer ϕ 12
325	103030089	Lock nut M12
326	103040096	Mount/demount head mat
327	103020057	Hexagon socket set screws with flat point M10 \times 25
328	103010401	Hexagon socket set screws with flat point M12 \times 12
329	201010121	Mount/demount head roller
330	103060014	Pin of Mount/demount head roller
*331	104070010	Mount/demount head mat

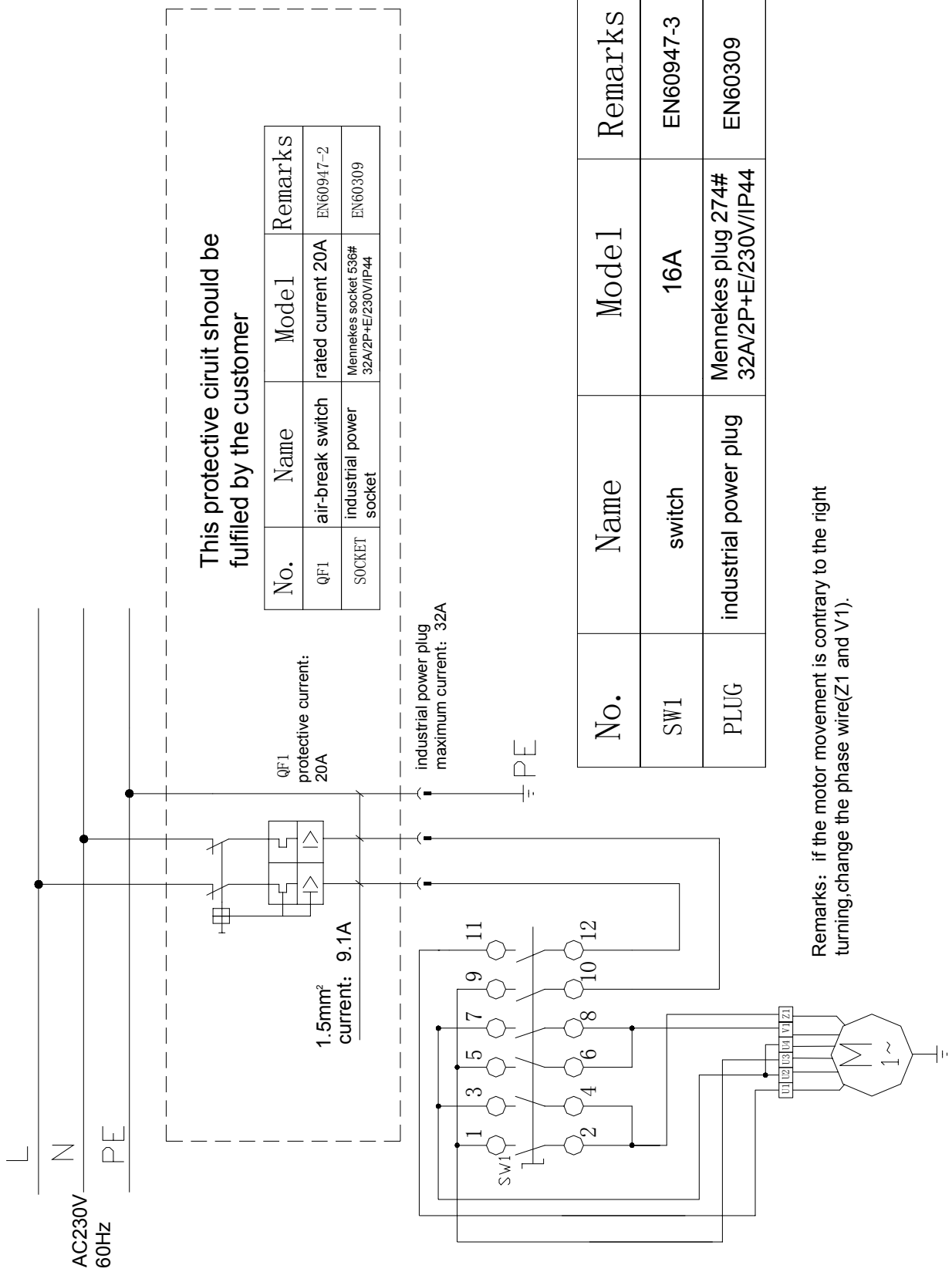
*332	104070009	Mount/demount head slide block
333	201020141	Metal Mount/demount head assembly
401	103030102	Lock nut M14
402	103040097	Plain washer ϕ 4
403	103080002	Key A6×21
404	103230034	Pulley of speed reducer
405	104130083	FB Sealing ring 20×35×7
406	104130080	O Sealing ring ϕ 34.5×3.55
407	103060022	Tapered roller bearing
408	103200291	Worm
409	104990075	Sealing cover units of reduction gear box
410	103230033	Upper cover of worm case
411	201012010	Worm bearing
412	103070007	Angular contact bearing
413	201010202	Casing of reduction gear box
414	103200789	Worm wheel
415	103070007	Angular contact bearing
416	103230052	Lower cover of worm case
417	103080001	Key A14×40
418	103010606	Column bolt M10×65
419		
420		
421	201020981	Gear reducer assembly
422	103020075	Hexagon bolt M8×25
423	103040026	Spring washer ϕ 8
424	103040064	Motor plain cushion
425	104130255	V Vee belt A-28'
426	X103220048	Motor pulley
427	103080015	Plain key C8×30
428	202010009	Motor cushion mat
429	201011709	Motor support
430A		Motor ~230V/50Hz 1.1kw
430B		Motor ~230V/60Hz 1.1kw
430C	102990104	Motor ~220V/50Hz 1.1kw
430D		Motor ~220V/60Hz 1.1kw
430E	102990103	Motor ~110V/60Hz 1.1kw
430F		Motor ~110V/50Hz 1.1kw
431	104050033	Air compressing hose
432	103100033	Male connector
433	104050007	Nozzle of rotary valve
434	103100036	Male connector
435	202010011	Pneumatic spool unit

*436	104130062	O Sealing ring $\phi 60 \times 2.65$
437	202010010	Pneumatic valve pocket
438	202020008	Rotary pneumatic valve assembly
439	103202039	Sump Cover
440	201021340	Dipstick assembly
451	103220074	Rotary pneumatic valve clam
452	103020075	Hexagon bolt M8 \times 25
453	103010313	Hexagon bolt M6 \times 25
455	103030062	Hexagon nut M10
456	103010587	Column bolt M10 \times 50
457	103020075	Hexagon bolt M8 \times 25
458	202010009	Spring washer $\phi 10$
459	103030061	Hexagon nut M8
501	104050033	Air compressing hose
502	103100247	Male branch tee
503	103100003	Muffler
504	104010274	Pentagamma valve units
505	103100248	Nut locking L joint
506	104010271	Pentagamma casing
*507	104130074	O Sealing ring $\phi 11.8 \times 4$
508	104010273	Five-way valve cover
509	201010232	Cam hood
510	104120025	Cam body
511	103110031	Cam spring sheet
512	104010270	Transfer shift bar
513	104020044	Steering switch cover
514	102100101	Motor power switch
515	103110033	Pedal release spring
516	X201010226	Reed type support
517	201010207	Pedal support units
518	103110032	Reed type
519	103040112	Plain washer $\phi 12$
520	201010262	Transfer shift connecting rod
521	201010205	Pedal casing
522	Y103220073	Cam connecting rod
523	103030098	Locking nut M8
524	103050003	Circlip for shaft $\phi 12$
525	103040112	Plain washer $\phi 12$
526	201010208	Pedal bearing
527	Y103220072	Transfer shift pedal
528	Y103220075	Pentagamma valve pedal
529	201021028	Pedal assembly

601	306070016	Tyre lever
602	103990037	Inflating gun with gauge
603		Mount/demount head unit
604	201010225	Mount/demount head base
605	103010166	Hexagon socket set screws with flat point M8×20
*606	Y104990077	Plastic mount/demount head
607	103040096	Flat washer φ10
608	103020058	Hexagonal bolt M10×50
609	103010327	Socket screw M8×25
610	103040064	Flat washer φ8
611	103160011	Reducing valve
612	103100247	L Elbows
613	103990019	Air pressure regulator, gauge and lubricat or assembly

TWC-401NIC Electrical Diagram



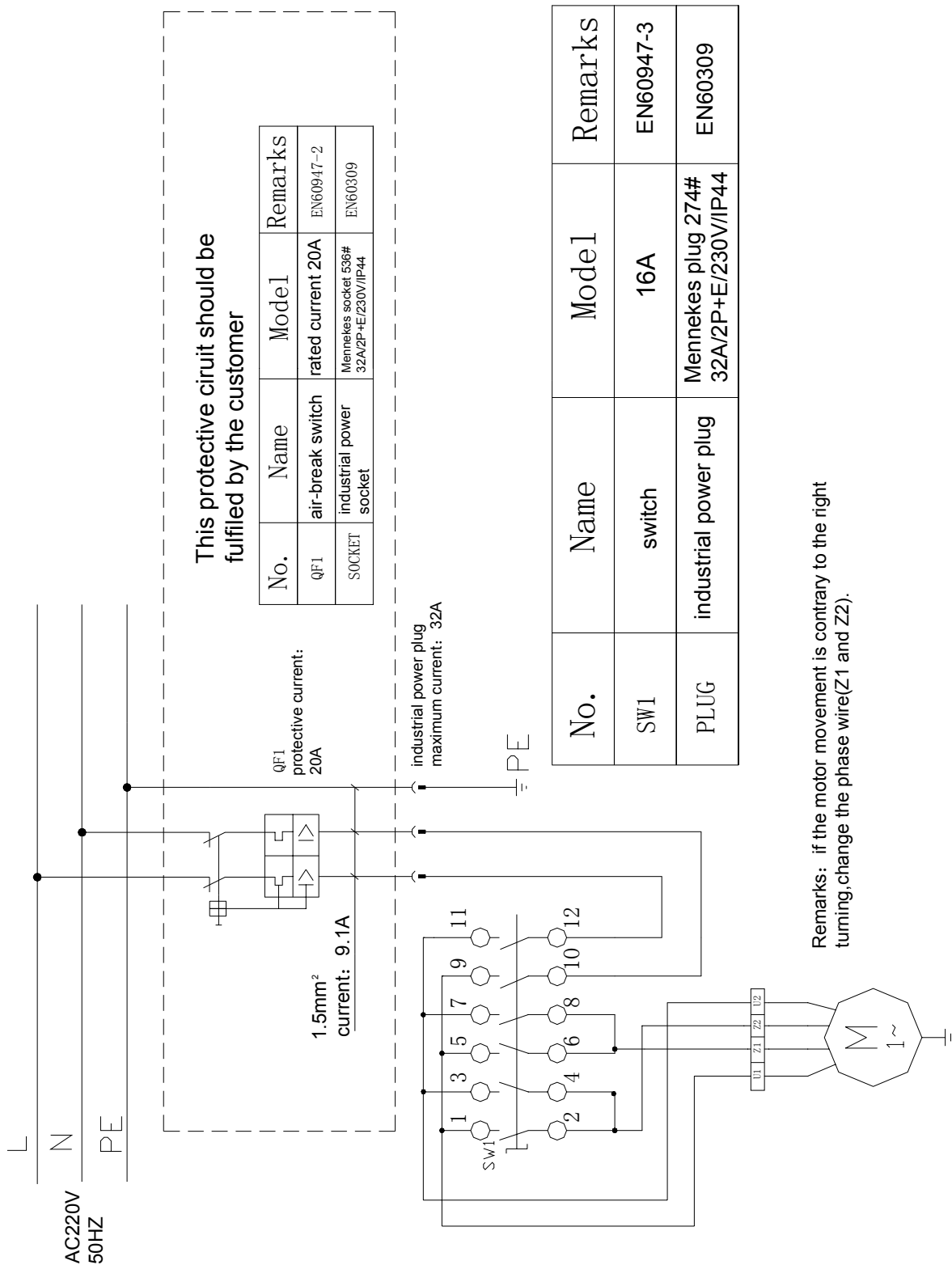


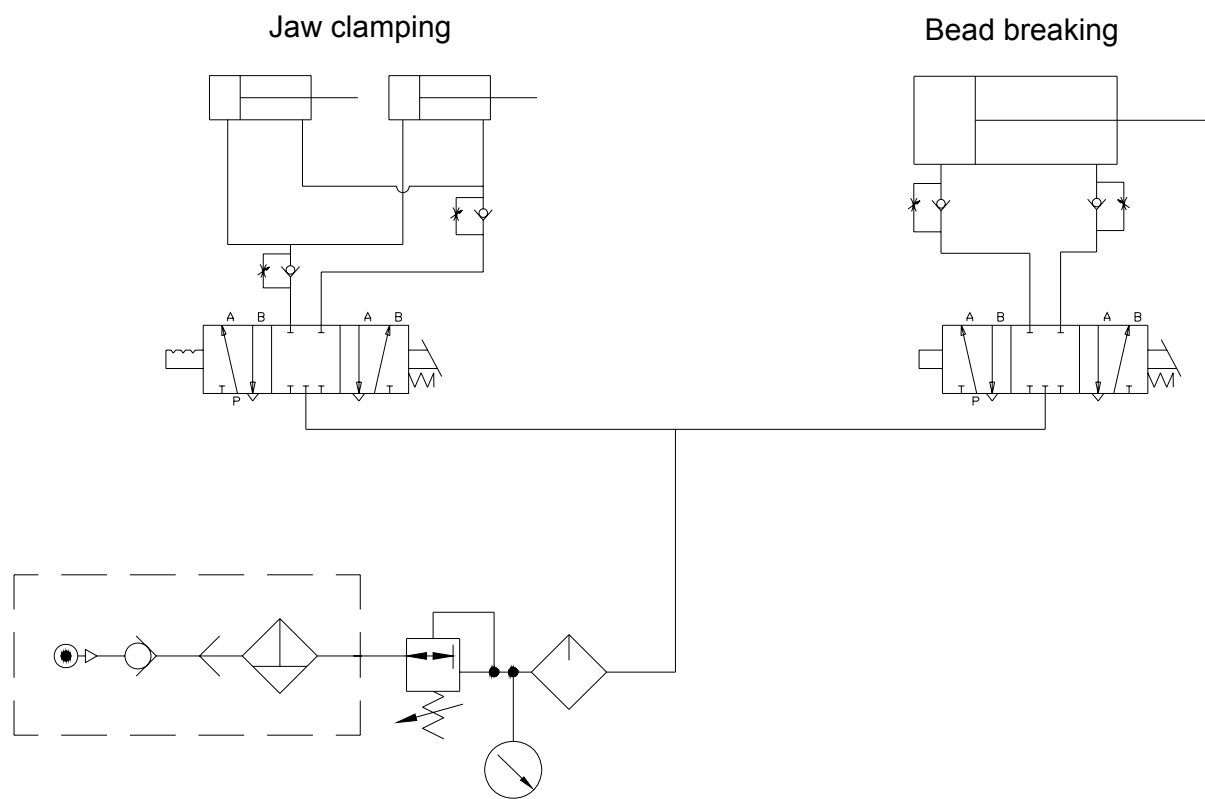
This protective circuit should be fulfilled by the customer

No.	Name	Model	Remarks
QF1	air-break switch	rated current 20A	EN60947-2
SOCKET	industrial power socket	Mennekes socket 536# 32A/2P+E/230V/IP44	EN60309

No.	Name	Model	Remarks
SW1	switch	16A	EN60947-3
PLUG	industrial power plug	Mennekes plug 274# 32A/2P+E/230V/IP44	EN60309

Remarks: if the motor movement is contrary to the right turning, change the phase wire(Z1 and V1).





TWC-401NIC Air Passage Diagram