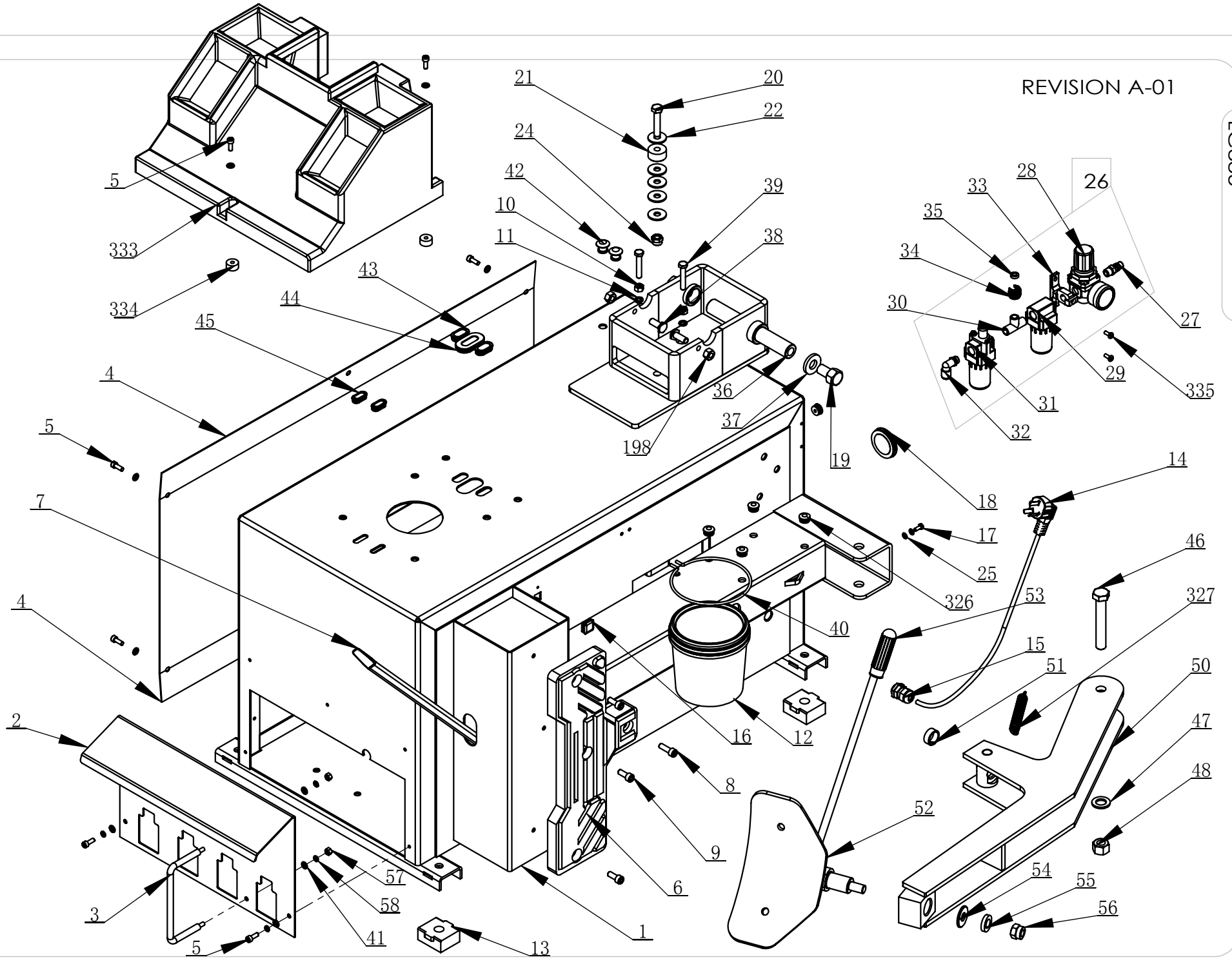


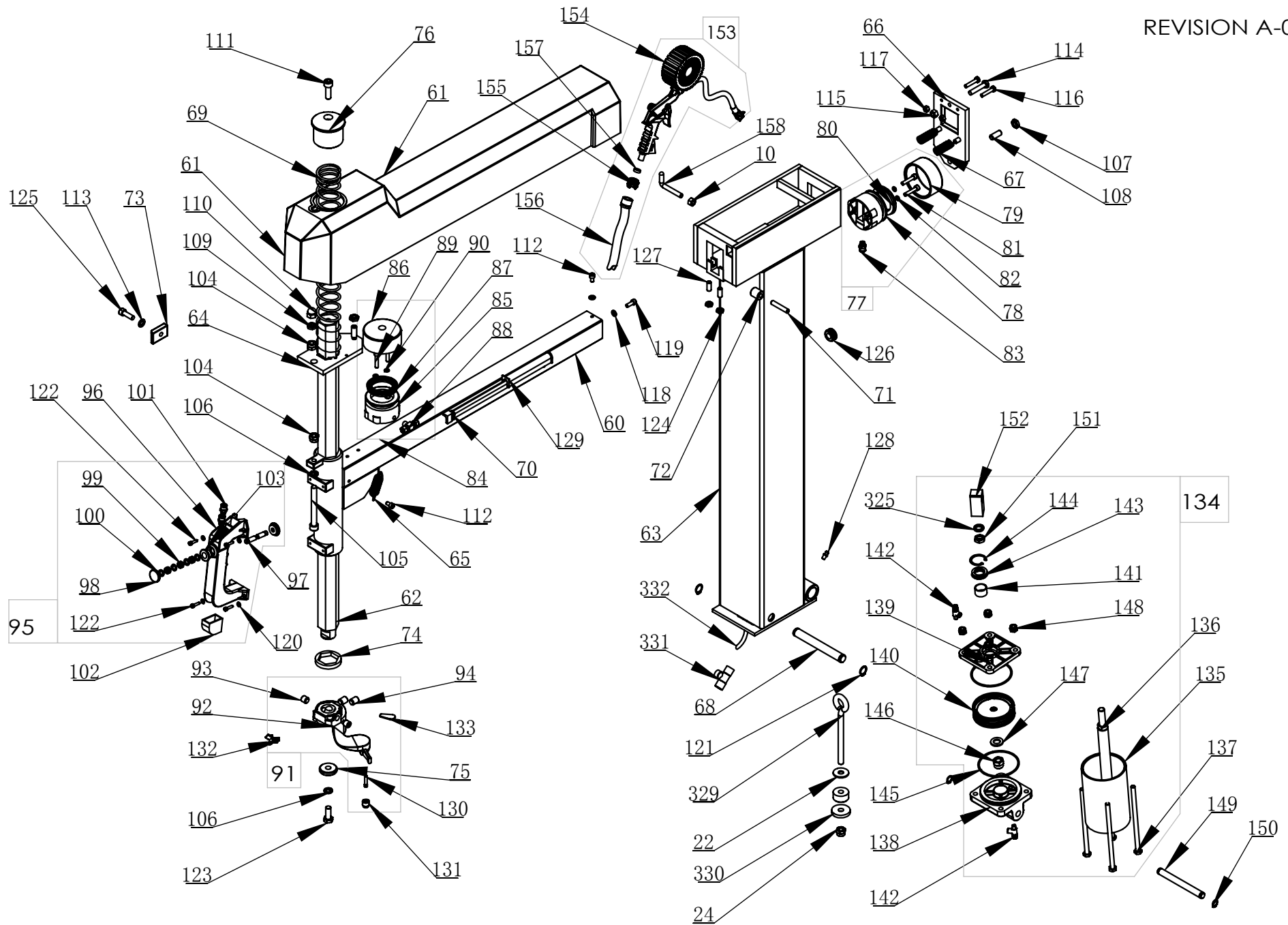
# Exploded Drawing

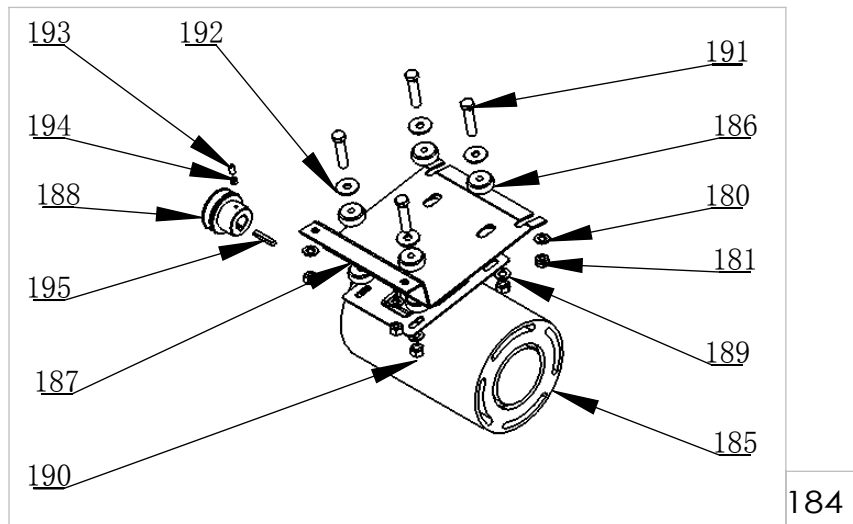
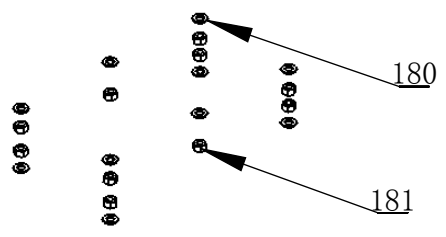
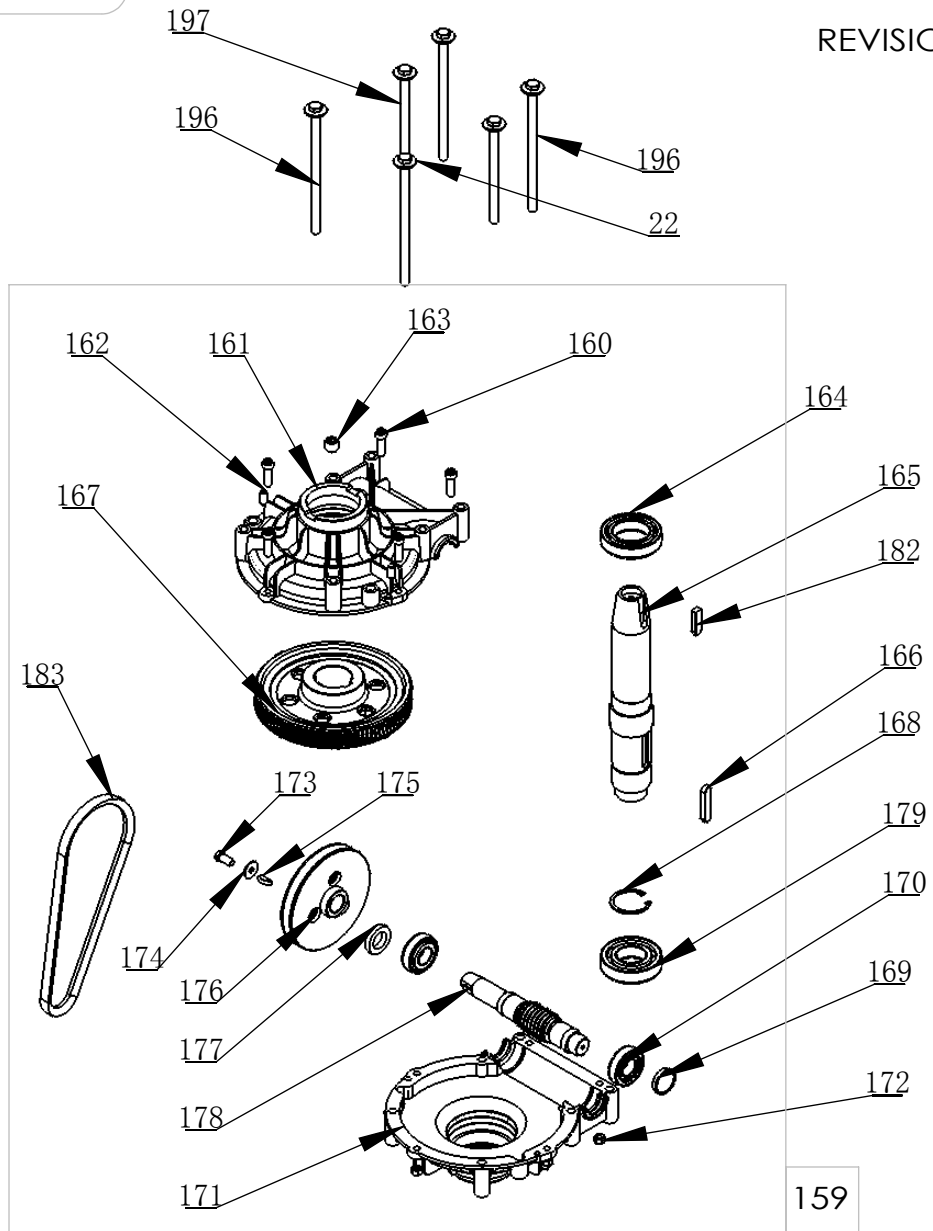
LC885

REVISION A-01

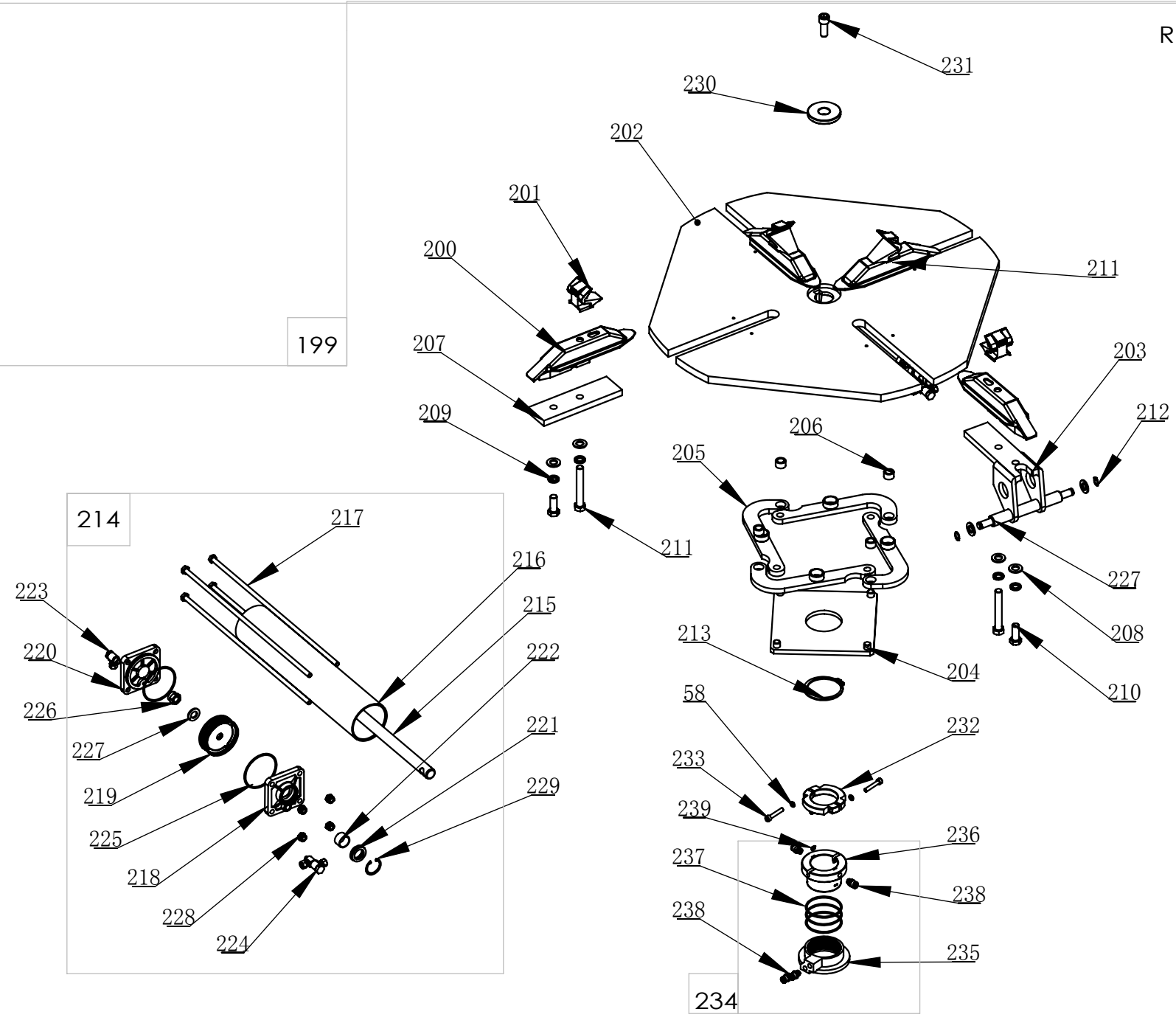
LC885

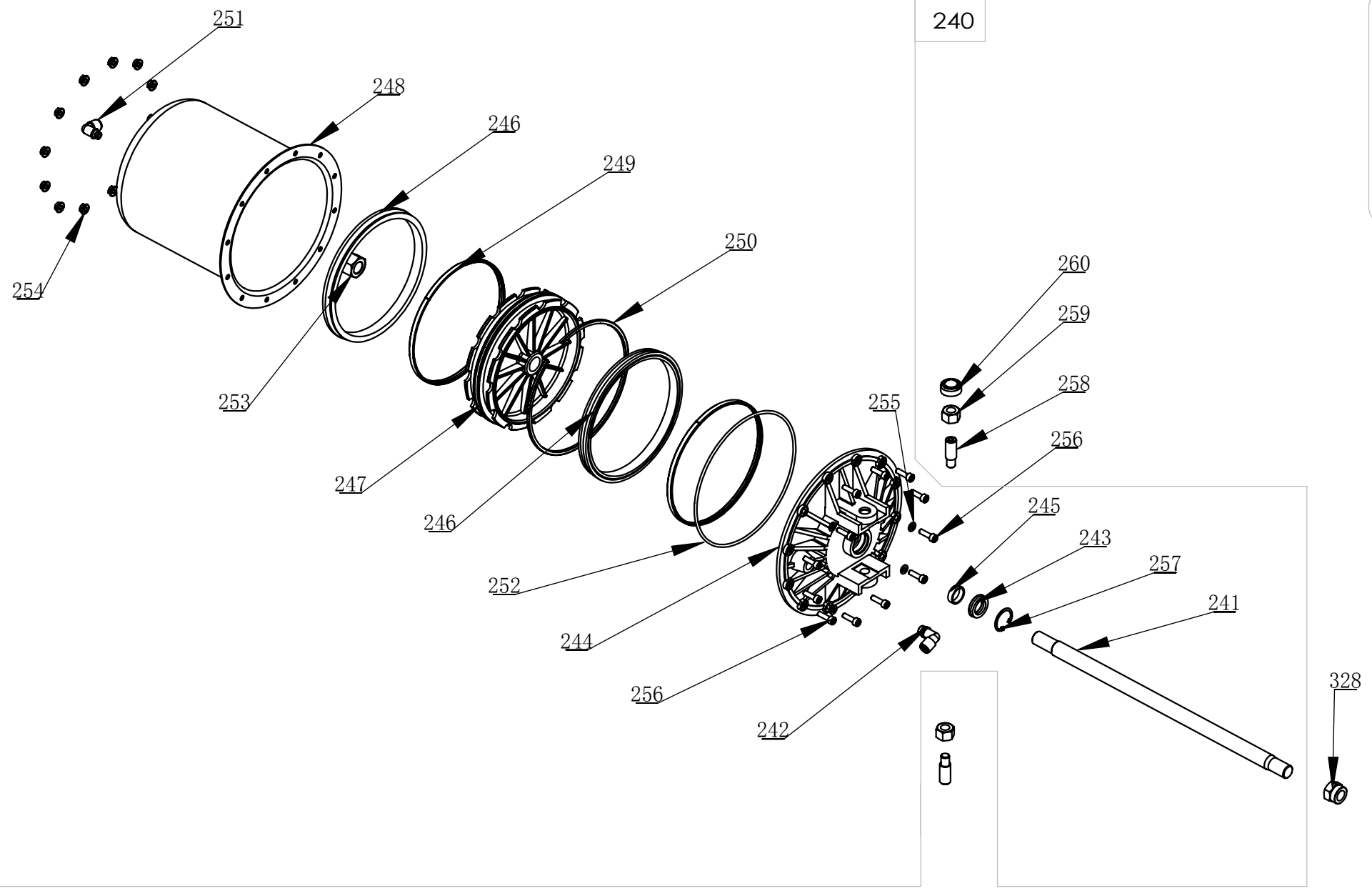






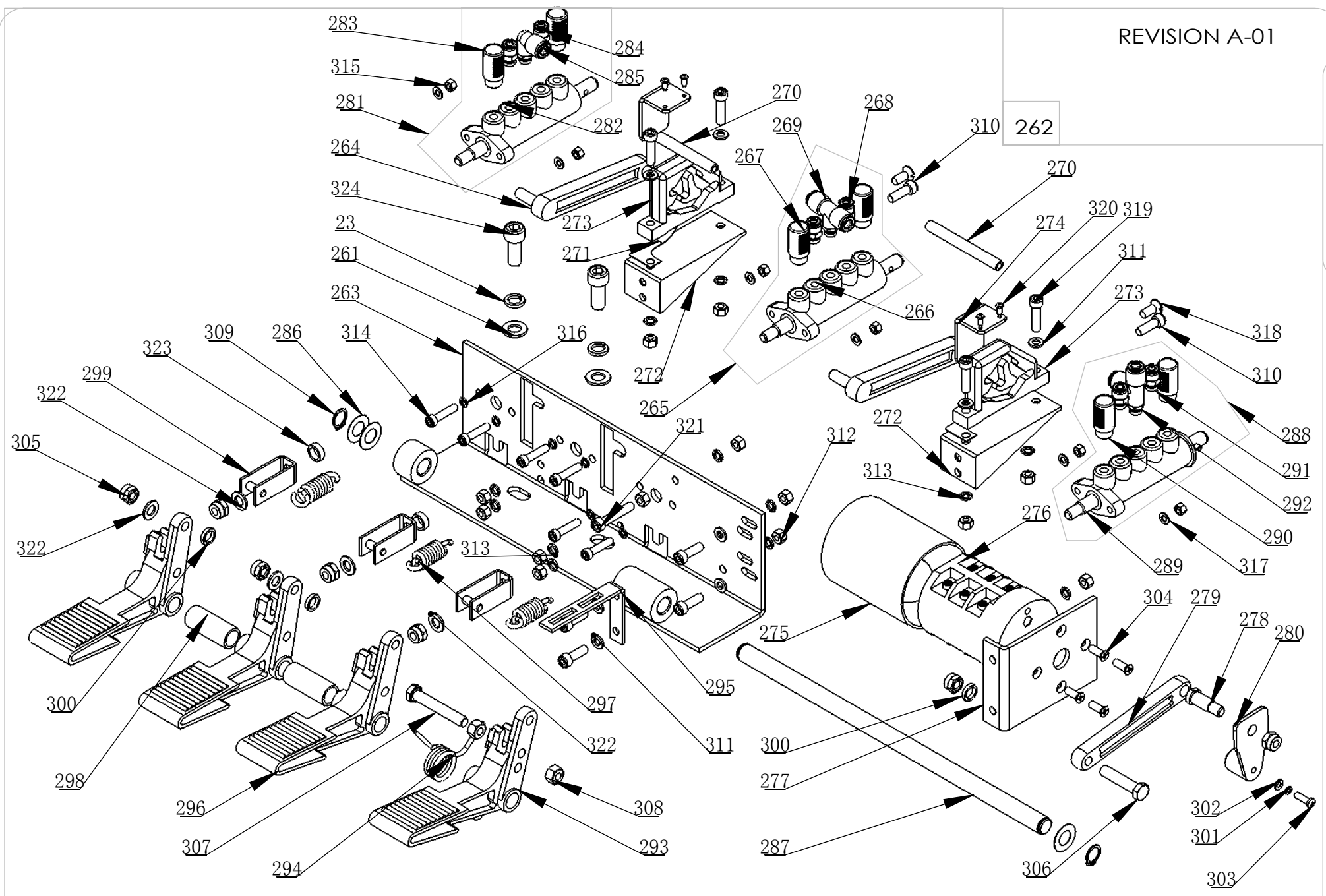
199





REVISION A-01

LC885



ITEM	PART No	DESCRIPTION.	QTY
1	6009204	BODY WELDING	1
2	6000538	PROTECTIVE COVER	1
3	6010006	PROTECTIVE ROD	1
4	6000537	SIDE PANEL	1
5	5009015	SCREW M6X16	13
6	5004093	RUBBER PAD PLATE	1
7	5004094	CROWBAR 20 "	1
8	5010088	SCREW M8X25	1
9	5010063	SCREW M8X20	3
10	5002060	NUT M8	3
11	5004046	WASHER 8	2
12	5509141	GREASE CONTAINER	1
13	5502045	RUBBER FOOT	4
14	5509113	POWER CABLE ASSEMBLY	1
15	5502049	CABLE CONNECTOR	1
16	5502046	STOP-UP	1
17	5009093	BOLT M5X12	1
18	5004100	CUSHION BUSHING	1
19	5002066	BOLT M16X25	2
20	5010041	BOLT M10X50	1
21	5004074	WASHER $\Phi 30 \times \Phi 10 \times 15$	2
22	5004005	WASHER 10	12
23	5010006	WASHER 10	2
24	5008112	NUT M10	2
25	5010045	WASHER 5	2
26	5509284	AIR REGULATOR ASSEMBLY	1
27	5004079	AIR SUPPLY CONNECTOR	1
28	5509149	ADJUSTING VALVE	1
29	5004086	WATER CUP	1
30	5004082	TEE R1/4	1
31	5004087	OIL CUP	1
32	5004083	INSERT ELBOW $\Phi 8$ , R1/4"	1
33	5004085	BRACKET	1
34	5004075	OPEN NUT	1
35	6000266	RING D13XD7X4	1
36	6000600	ROTATION SHAFT	1
37	6000599	WASHER	2
38	6000543	BOLT	2
39	5004044	BOLT M8X45	2
40	5004092	BRACKET	1
41	5008063	WASHER 6	15
42	5502033	STOP-UP	2
43	5509154	PLUG C	2
44	5509155	PLUG B	1
45	5509153	PLUG A	2
46	5004014	BOLT M16X100	1
47	5010026	WASHER 16	1

ITEM	PART No	DESCRIPTION.	QTY
48	5004042	NUT 16	1
49	6000309	BEAD BREAKER	1
50	6000357	BEAD BREAKER	1
51	6000344	SLIDE SPACER	1
52	6000308	BEAD BREAKER BLADE	1
53	6008091	RUBBER COVER	1
54	6008977	WASHER	1
55	5010091	WASHER 14	1
56	5010090	NUT M14	1
57	5004008	NUT M6	2
58	5010058	WASHER 6	9
59	6009205	HORIZONTAL ARM	1
60	6000583	HORIZONTAL ARM	1
61	6000588	PROTECTIVE COVER	1
62	6000589	HEXAGON SHAFT	1
63	6000570	VERTICAL COLUMN	1
64	6000590	HEXAGON LOCK PLATE	1
65	6000591	SPRING	2
66	6000595	SQUARE LOCK PLATE	1
67	6000598	PRESS SPRING	2
68	6000601	PULL-OUT SHAFT	1
69	6000604	VERTICAL SHAFT SPRING	1
70	6000605	PIPE GUIDER	1
71	6009050	SUPPORT SHAFT	1
72	6009049	ROTATING SPACER	1
73	5509163	POSITIONING BLOCK	1
74	5004115	SHOCK ABSORBER WASHER	1
75	5004201	PRESS WASHER	1
76	5004200	VERTICAL SHAFT COVER	1
77	5509169	LOCKING CYLINDER ASSY	1
78	6000594	LOCK CYLINDER BODY	1
79	6000593	LOCK CYLINDER COVER	1
80	5004114	Y-RING $\Phi 65 \times 8$	1
81	5004061	SCREW M6X30	2
82	5009086	O RING $\Phi 6 \times 2$	2
83	5010060	INSERT FITTING $\Phi 6$ , R1/8"	1
84	5509170	LOCKING CYLING ASSY	1
85	6000594	LOCK CYLINDER BODY	1
86	6000593	LOCK CYLINDER COVER	1
87	5004114	Y-RING $\Phi 65 \times 8$	1
88	5004069	TEE R1/8"-6	1
89	5004061	SCREW M6X30	2
90	5009086	O RING $\Phi 6 \times 2$	2
91	5509220	DEMOUNTING HEAD ASSEMBLY	1
92	5502123	DEMOUNTING HEAD	1
93	5004021	SCREW M12X12	2
94	5004023	SCREW M12X16	2



ITEM	PART No	DESCRIPTION.	QTY
95	5004119	HANDLE CONTROLLING VALVE	1
96	5502102	HANDLE CONTROL VALVE	1
97	5502105	VALVE ROD	1
98	5502099	FRONT COVER	2
99	5502100	VALVE SPACER	3
100	5002075	O RING 8X2.65	4
101	5010060	INSERT FITTING $\Phi 6$ , R1/8"	2
102	5502103	REAR COVER	1
103	5502108	FRONT SEALING COVER	1
104	5008112	NUT M10	2
105	5004026	SCREW M10X90	1
106	5010006	WASHER 10	2
107	5002035	NUT M10X1.0	2
108	5004019	SCREW M10X1X25	2
109	5004018	NUT M10	1
110	5004025	NUT M10	1
111	5000033	SCREW M10X30	1
112	5004220	SCREW M6X10	3
113	5000018	WASHER 8	1
114	5004016	BOLT M8X40	1
115	5002060	NUT M8	1
116	5008021	BOLT M6X30	2
117	5004008	NUT M6	2
118	5008063	WASHER 6	2
119	5009015	SCREW M6X16	1
120	5010040	WASHER 4	4
121	5002077	RING 16	2
122	5010218	SCREW M4X16	4
123	5009146	BOLT M10X25	1
124	5010054	NUT M8	2
125	5010088	SCREW M8X25	1
126	5004068	STOP-UP	1
127	5002033	SCREW M8X20	2
128	5502040	OIL CUP	1
129	6000606	PIPE GUIDER	1
130	5004116	ROLLER BOLT	1
131	5004117	ROLLER	1
132	5509015	SHEATH	1
133	5509014	PLASTIC COVER	1
134	6000070	PULL-OUT CYLINDER D80X80	1
135	6000071	CYLINDER BODY	1
136	6000073	PISTON ROD	1
137	6000072	BOLT	4
138	6000074	CYLINDER REAR COVER	1
139	6000045	CYLINDER FRONT COVER	1
140	6000047	PISTON	1
141	6000008	BEARING-SLIDE	1

ITEM	PART No	DESCRIPTION.	QTY
142	5509137	MUFFLER R1-8" $\Phi 8$	2
143	6000007	SEAL-ROD, CYLNR	1
144	5010024	CIRCLIP 30	1
145	5010027	O RING 75X2.65	2
146	5010022	NUT M12	1
147	5010020	WASHER 12	1
148	5010092	NUT M8	4
149	6000540	PIN SHAFT	1
150	5004015	RING 12	2
151	5014025	NUT M12	1
152	6000075	SHAFT CONNECTOR	1
153	5509174	INFLATING GUN ASSY	1
154	5004098	INFLATING GUN	1
155	5004075	OPEN NUT	1
156	5502124	INFLATION HOSE	1
157	6000266	RING D13XD7X4	1
158	6010039	INFLATING GUN HOOK	1
159	6000351	GEARBOX ASSEMBLY	1
160	5004060	SCREW M8X30	5
161	6000353	GEARBOX TOP	1
162	5004208	PIN 8X20	2
163	5010078	SCREW M16X1.5X15	1
164	5010002	ROLLING BEARING 6010	1
165	6000352	WORM SHAFT	1
166	5009082	PLAIN KEY 12X56	1
167	6000354	WORM	1
168	5010001	CIRCLIP 50	1
169	6000355	CAP 40X25X8	1
170	5000015	ROLLING BEARING 30205	2
171	6000356	GEARBOX BASE	1
172	5002060	NUT M8	5
173	5010077	BOLT M8X20	1
174	5009118	WASHER 8	1
175	5002086	PLAIN KEY 6X9X22	1
176	6000275	BELT PULLEY	1
177	5010208	SEALED RING	1
178	6000273	WORM ROD	1
179	5010076	ROLLING BEARING 6208	1
180	5509151	WASHER 10	14
181	5010004	NUT M10	14
182	5006003	PLAIN KEY 12x45	1
183	5004076	BELT A-25	1
184	6009246	MOTOR ASSEMBLY	1
185	5509285	MOTOR AC380V (220V) 50Hz	1
186	6000183	RUBBER WASHER	8
187	6000182	MOTOR SUPPORT	1
188	6009145	MOTOR BELT PULLEY	1

ITEM	PART No	DESCRIPTION.	QTY
189	5509151	WASHER 10	4
190	5010004	NUT M10	4
191	5010041	BOLT M10X50	4
192	5004005	WASHER 10	4
193	5010232	SCREW M5X16	1
194	5011008	NUT M5	1
195	5010056	PLAIN KEY 6X36	1
196	5004006	BOLT M10X200	4
197	5004004	BOLT M10X160	2
198	5010004	NUT M10	2
199	6009253	TURNTABLE ASSEMBLY	1
200	6000712	SLIDE COVER	4
201	6000107	CLAMP	4
202	6000132	TURNTABLE	1
203	6008961	BRACKET-CYLINDER	2
204	6000105	SQUARE TURNTABLE	1
205	6000135	CONNECTION PLATE	4
206	6000109	SPACER	4
207	6000134	PRESS BOARD	2
208	5010020	WASHER 12	12
209	5010025	WASHER 12	8
210	5006041	BOLT M12X30	4
211	5009128	BOLT M12X83	4
212	5004015	RING 12	4
213	5010030	CIRCLIP 65	1
214	6000050	CYLINDER ASSEMBLY	2
215	5509143	SHAFT-CYLNR	1
216	5509144	SLEEVE-CYLNR 70	1
217	5509145	BOLT	4
218	6000004	FRONT COVER	1
219	6009143	PISTON-W/WSHR, ASSY	1
220	6000003	REAR COVER	1
221	6000007	SEAL-ROD, CYLNR	1
222	6000008	BEARING-SLIDE	1
223	6000009	HINGE ELBOW $\Phi 6$ R1/8"	1
224	6000010	HINGE TEE $\Phi 6$ R1/8"	1
225	5010021	O RING 65X2.65	2
226	5010022	NUT M12	1
227	5010020	WASHER 12	1
228	5010092	NUT M8	4
229	5010024	CIRCLIP 30	1
230	6000106	PRESS COVER	1
231	5002054	SCREW M12X30	1
232	6000618	CLAMP RING	1
233	5004031	SCREW M6X35	2
234	6000619	ROTATING UNION	1
235	6000724	AIR GUIDE EXTERNAL COVER	1

ITEM	PART No	DESCRIPTION.	QTY
236	6000725	AIR GUIDE ROTATION BUSHING	1
237	5010231	RING 60X2.65	3
238	5010060	INSERT FITTING $\Phi 6$ , R1/8"	4
239	5002078	SCREW M3X6	4
240	6000278	BEAD BREAKER CYLINDER ASSEMBLY	1
241	6008981	SHAFT-CYLNR, 445	1
242	5004083	INSERT ELBOW $\Phi 8$ , R1/4"	1
243	6000007	SEAL-ROD, CYLNR	1
244	6000299	CYLINDER COVER	1
245	5010204	GUIDER SPACER	1
246	5509160	Y-RING	2
247	6000279	PISTON	1
248	6000280	CYLINDER BODY	1
249	5509161	CLAMP RING	2
250	5509162	PISTION SUPPORT RING	1
251	5509158	INSERT ELBOW $\Phi 8$ , R1/8"	1
252	5010097	O-RING 185x3.55	1
253	5010114	NUT M18X1.5	1
254	5010042	NUT M6	12
255	5008063	WASHER 6	12
256	5004032	SCREW M6X20	12
257	5010105	CIRCLIP 30	1
258	5010205	SCREWS M14X42	2
259	5000086	NUT M14	2
260	5004070	SEALED COVER	1
261	5509151	WASHER 10	2
262	6000307	PEDAL ASSEMBLY	1
263	6000400	PEDAL SUPPORT	1
264	6000226	VALVE CONNECTING ROD	2
265	6009122	VALVE-B	1
266	5509260	VALVE	1
267	5010047	MUFFLER $\Phi 8$ R1/8 "	2
268	5010060	INSERT FITTING $\Phi 6$ , R1/8"	2
269	6000218	INSERT TEE, 8MM, R1/8	1
270	5010049	HOSE 8-5MM	2
271	6000204	FORK SPRING PLATE	2
272	6000201	CAM BRACKET	2
273	6000211	CAM	2
274	6000217	CAM PLATE	2
275	6000215	SWITCH COVER	1
276	5010055	SWITCH	1
277	6000213	SWITCH SUPPORT	1
278	6000209	ROTATION SHAFT	1
279	6000210	CONNECTION ROD	1
280	6000212	REVERSE LEVER 8	1
281	6000222	VALVE-B	1
282	5509260	VALVE	1

