

Exploded Drawing

810 A

C-88-0000000

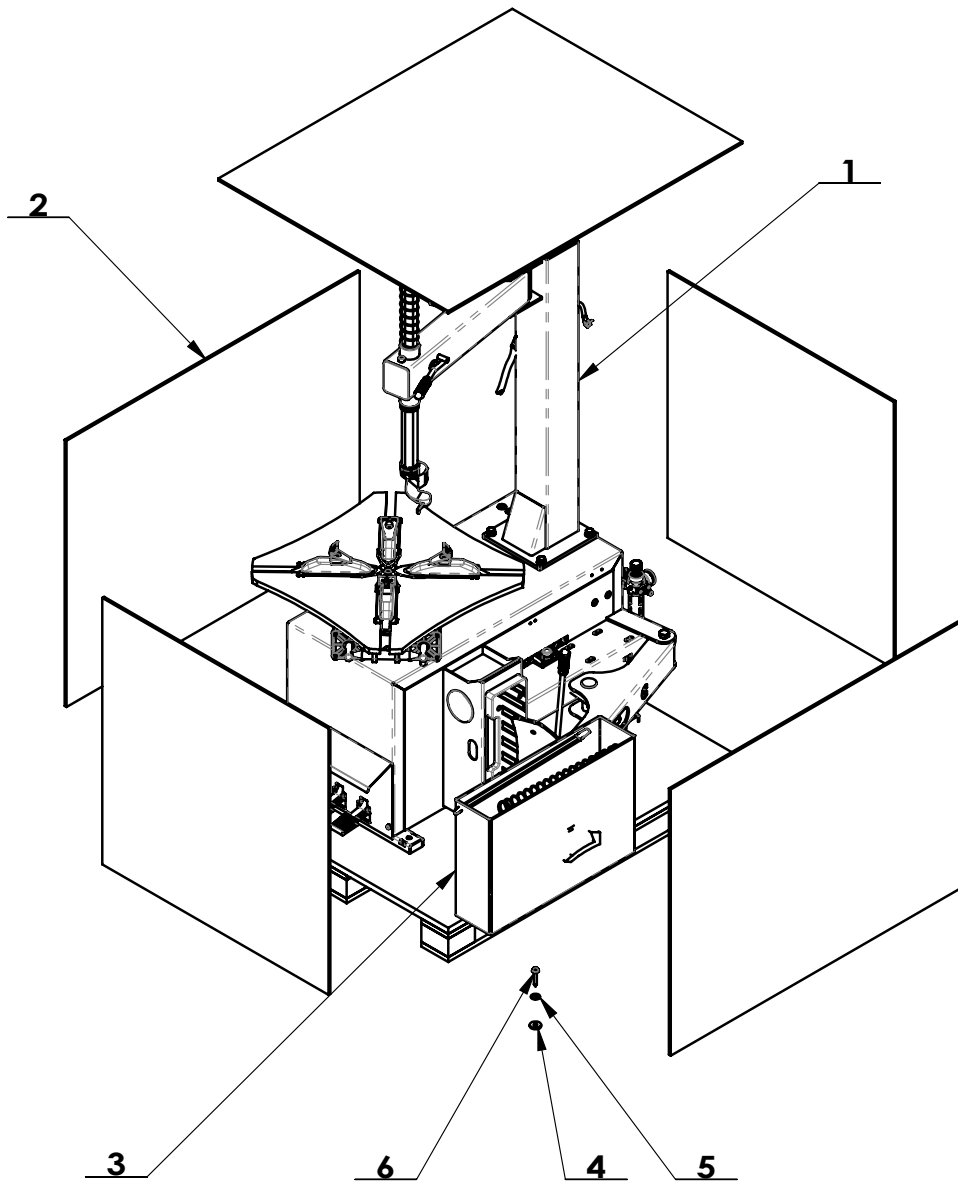
Organization :

To examine :

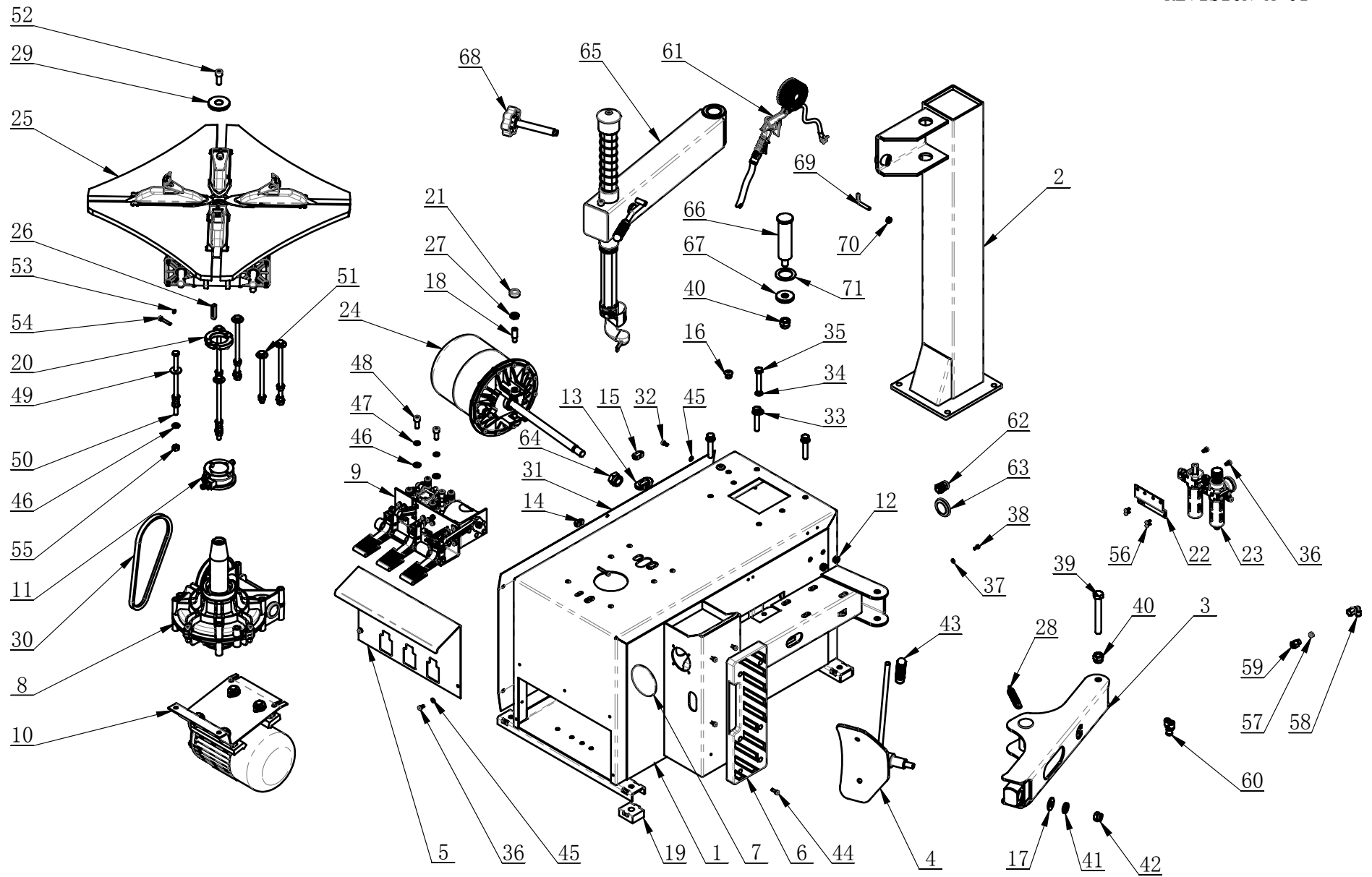
Approval :

Version: A-01

2012.02.27

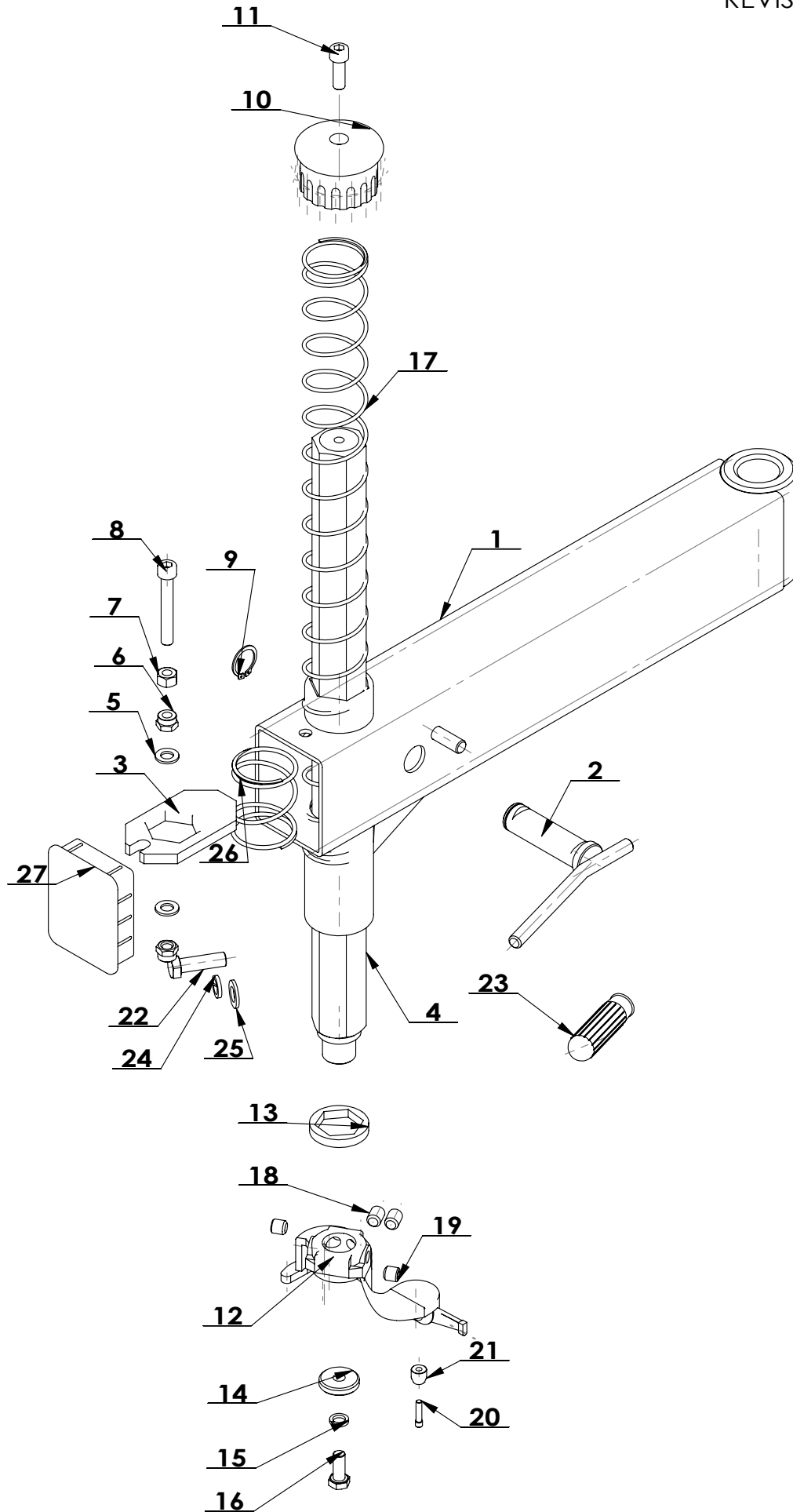


序号	编码	中文名称	数量
1	C-88-1000000	810 A	1
2	C-82-9100000	887 A钢带胶合板外销	1
3	C-88-8000000	附件箱	1
4	C-70-9000003	包装螺钉垫	4
5	GB96. 2-8	大垫圈 C级 8	4
6	GB16824. 1-ST8×50 C	六角凸缘自攻螺钉 ST8×50 C	4

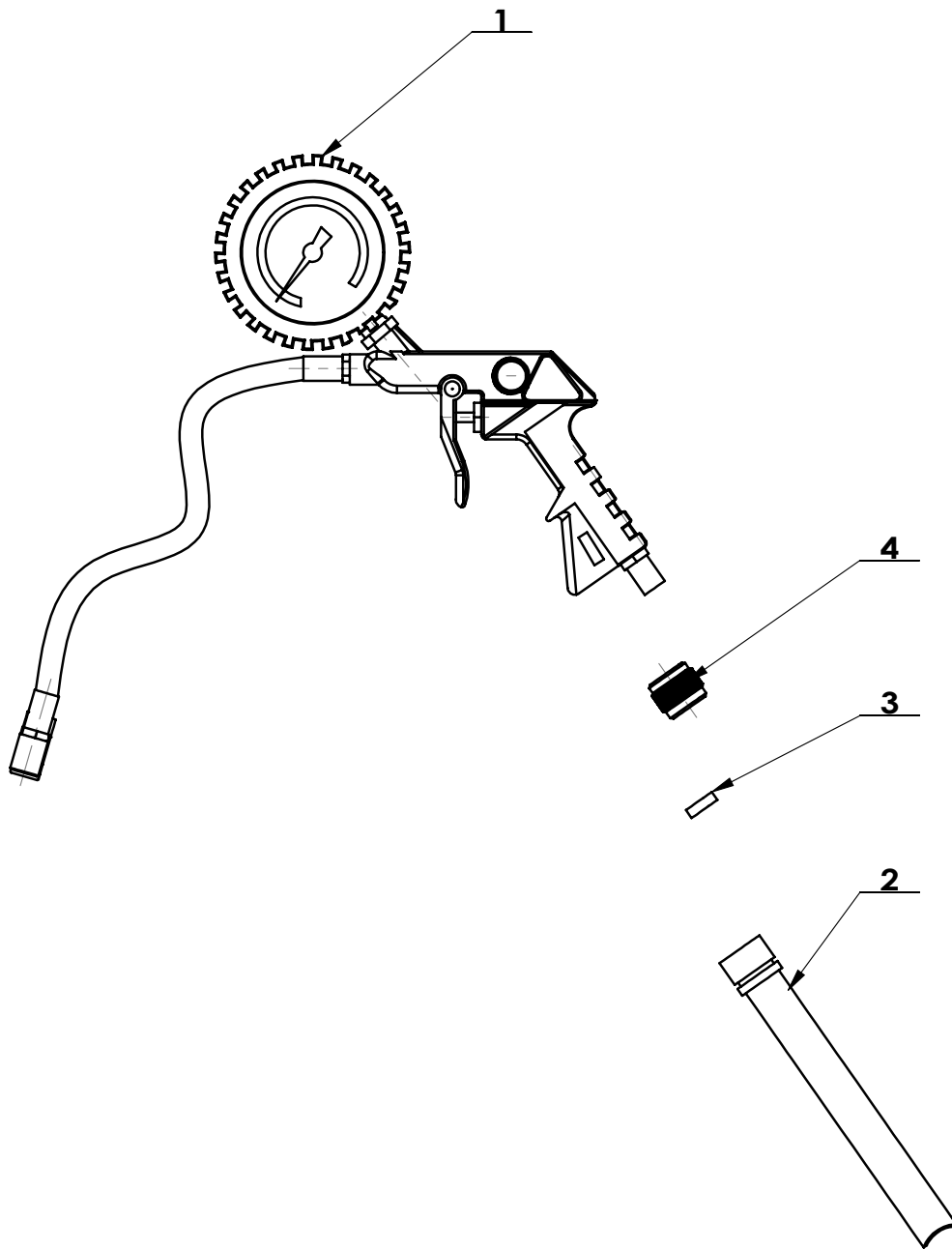


ITEM	PART. No	DESCRIPTION.	QT. Y
1	C-80-1100000	BODY WELDING	1
2	C-88-1200000	VERTICAL COLUMN	1
3	CT-B-9000000	BEAD BREAKER	1
4	CT-C-2100000	BEAD BREAKER BLADE	1
5	C-88-1000001	PROTECTIVE COVER	1
6	C-80-1000003	RUBBER PAD PLATE	1
7	C-80-1000004	RUBBER PLUG	1
8	CT-J-4100000	GEARBOX ASSEMBLY	1
9	CT-D-2400000	PEDAL ASSEMBLY	1
10	CT-DJ-0218112	MOTOR ASSEMBLY	1
11	CT-Q-1000000	AIR GUIDER (LC MODEL)	1
12	C-70-1000006	φ 12 RUBBER PLUG	3
13	C-90-1000002	PLUG B	1
14	C-90-1000003	PLUG A	2
15	C-90-1000004	PLUG C	2
16	C-70-1000014	STOP-UP	2
17	CT-C-2100003	WASHER	1
18	C-70-1000021	INNER HEXA CYLINDRICAL TERMINUS SET SCREW	2
19	C-54-1000005	RUBBER FOOT	4
20	CT-Q-0000001	CLAMP RING	2
21	C-70-1000011	SEALED COVER	1
22	C-90-1000013	AIR REGULATOR BRACKET	1
23	CT-F-2222121	AIR REGULATOR ASSEMBLY	1
24	CT-LS-H000000	BEAD BREAKER CYLINDER ASSEMBLY	1
25	CT-Y-5800000	TURNTABLE ASSEMBLY	1
26	GB1096-C12×8×45	COMMON FLAT KEY	1
27	GB6172. - M14	HEXANGULAR THIN NUT	2
28	CT-B-2000002	SPRING	1
29	CT-Y-0100001	PRESS COVER	1
30	CT-DJ-0000007	BELT A-25	1
31	C-82-1000001	SIDE PANEL	1
32	GB70. 1-M6×12	INNER HEXA CYLINDRICAL SCREW	5
33	GB95-12	FLAT WASHER	4
34	GB93-12	STANDARD SPRING WASHER	4
35	GB5782-M12×65	HEXANGULAR BOLT	4
36	GB70. 1-M6×10	INNER HEXA CYLINDRICAL SCREW	7
37	GB95-5	FLAT WASHER	2
38	GB5781-M5×12	HEXANGULAR BOLT	1
39	GB5782-M16×120	HEXANGULAR BOLT	1
40	GB889. 1-M16	1-TYPE PREVAILING TORQUE TYPE HEXAGON LOCK NUT	2

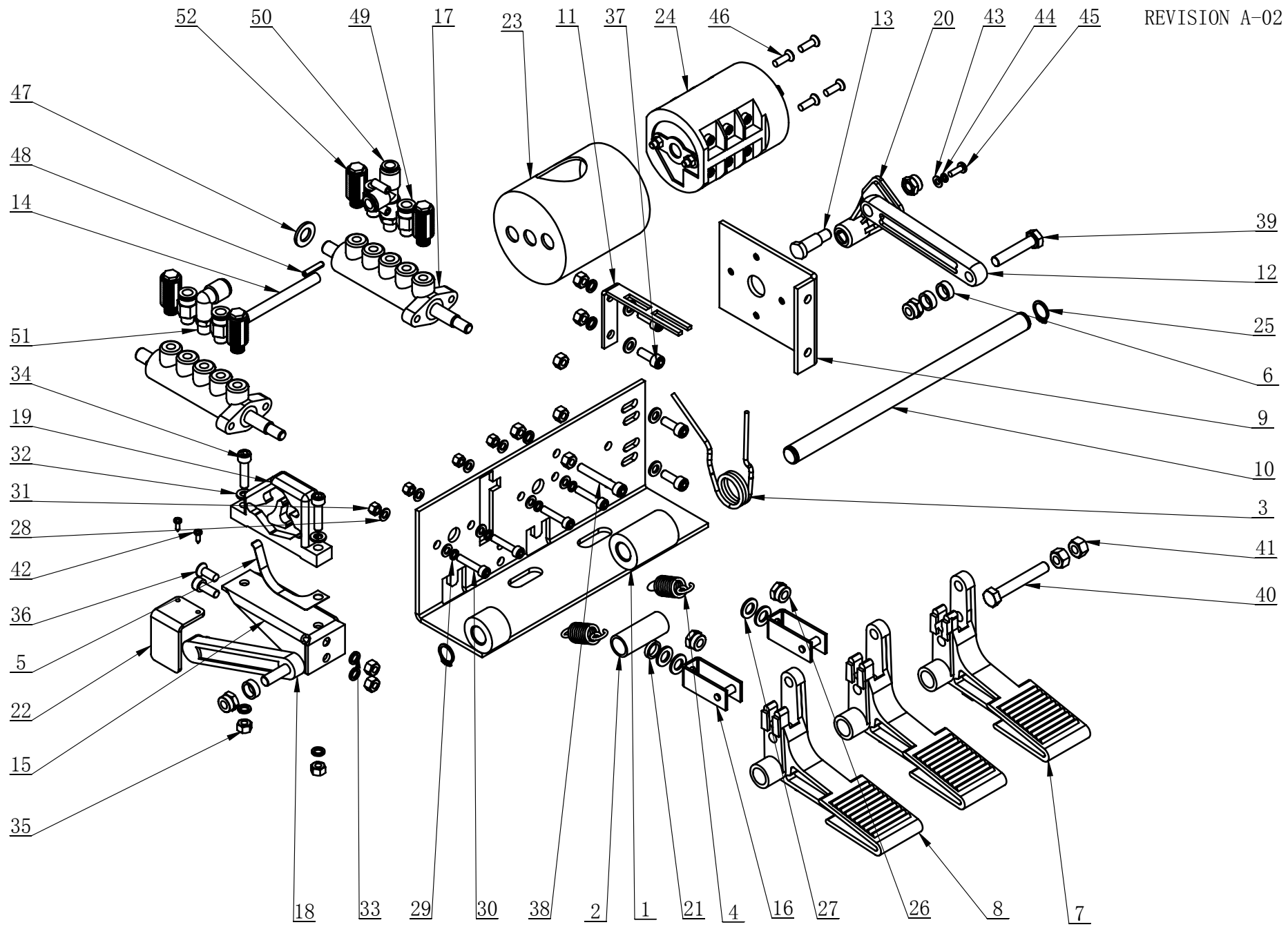
ITEM	PART. No	DESCRIPTION.	QT. Y
41	GB955-14	WAVE-FORM SPRING WASHER	1
42	GB889. 1-M14	1-TYPE PREVAILING TORQUE TYPE HEXAGON LOCK NUT	1
43	C-54-1300011	RUBBER COVER	1
44	GB70. 1-M6×16	INNER HEXA CYLINDRICAL SCREW	6
45	GB95-6	FLAT WASHER	10
46	GB95-10	FLAT WASHER	16
47	GB93-10	STANDARD SPRING WASHER	2
48	GB70. 1-M10×25	INNER HEXA CYLINDRICAL SCREW	2
49	GB96. 1-10	LARGE WASHER A GRADE	6
50	GB5781-M10X200	BOLT M10X200	4
51	GB/5781-M10×160	HEXANGULAR BOLT	2
52	GB70. 1-M12×30	INNER HEXA CYLINDRICAL SCREW	1
53	GB93-6	STANDARD SPRING WASHER	2
54	GB70. 1-M6×35	INNER HEXA CYLINDRICAL SCREW	2
55	GB41-M10	HEXANGULAR NUT	14
56	GB70. 1-M4×10	INNER HEXA CYLINDRICAL SCREW	4
57	C-70-1000018	JOINT SEALING GASKET	1
58	FPLF 8-02	FEMALE ELBOW	1
59	FPC 8-02	MALE STRAIGHT	1
60	FPY-8	UNION Y	1
61	C-01-1500000	INFLATING GUN ASSY	1
62	C-01-1000004	CABLE CONNECTOR	1
63	C-60-1000003	CUSHION BUSHING	1
64	GB889. 1-M18X1. 5	1-TYPE PREVAILING TORQUE TYPE HEXAGON LOCK NUT	1
65	C-88-1300000	SWING ARM	1
66	GT850. 03. 01	ROCKER VERTICAL SHAFT	1
67	GT890. 03. 09	SHAFT WASHER	1
68	C-01-1600000	HANDLE WHEEL	1
69	C-60-1000002	INFLATING GUN HOOK	1
70	GB41-M8	HEXANGULAR NUT	1
71	C-54-1000011	ADJUSTING WASHER	1



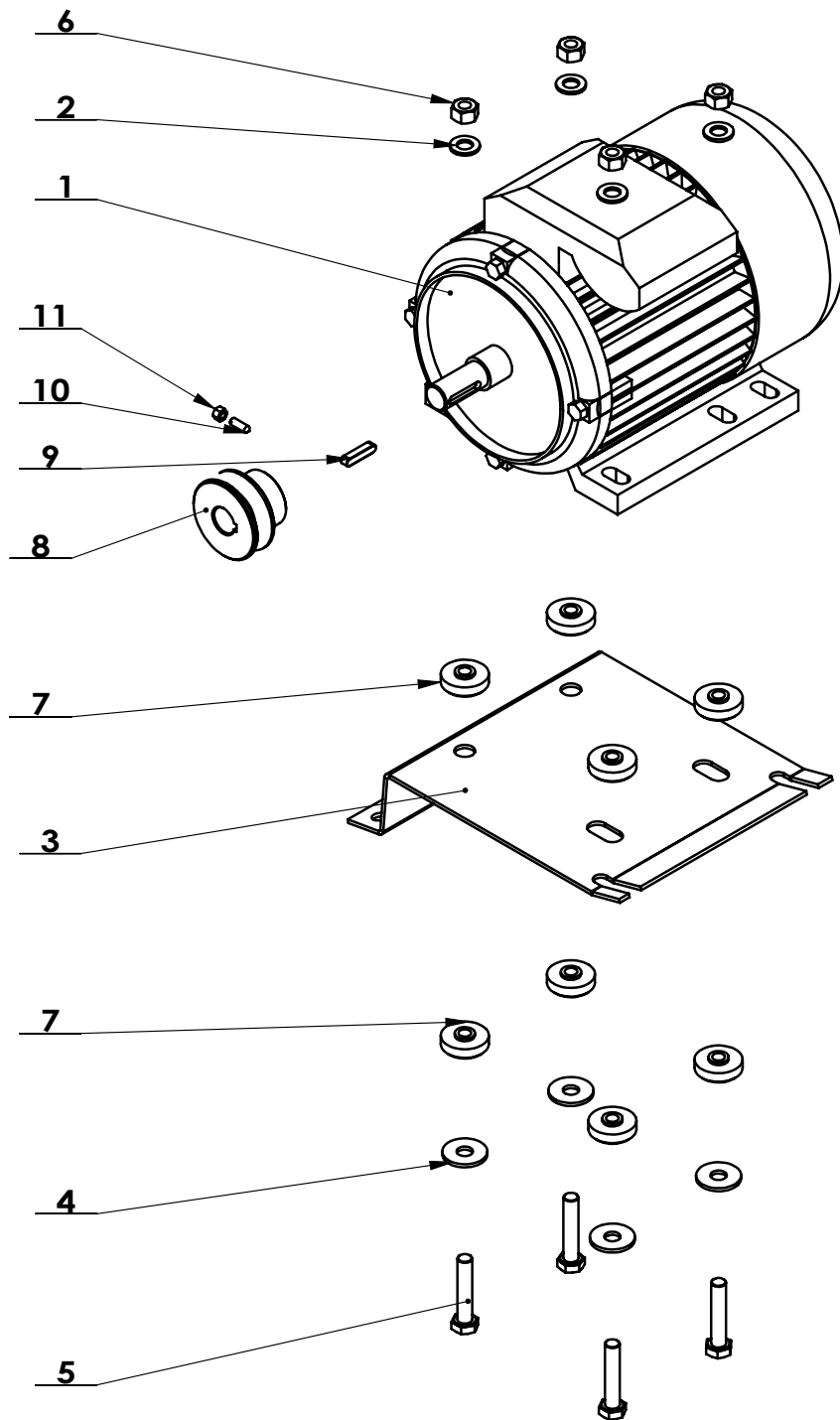
ITEM	PART. NO	DESCRIPTION	QT. Y
1	C-88-1310000	SWING ARM	1
2	C-54-1320000	LOCK HANDLE	1
3	C-5B-1300003	HEXAGON LOCK PLATE	1
4	C-88-1300001	HEXAGON SHAFT	1
5	GB95-10	FLAT WASHER	2
6	GB889. 1-M10	1-TYPE PREVAILING TORQUE TYPE HEXAGON LOCK NUT	2
7	GB41-M10	HEXANGULAR NUT	1
8	GB70. 1-M10×70	INNER HEXA CYLINDRICAL SCREW	1
9	GB894. 1-25	SHAFT ELATIC BIG RETAINING RING A-TYPE	1
10	C-90-1220004	VERTICAL SHAFT COVER	1
11	GB70. 1-M10×30	INNER HEXA CYLINDRICAL SCREW	1
12	C-31-1300013	DEMOUNTING HEAD	1
13	C-54-1300007	SHOCK ABSORBER WASHER	1
14	C-54-1300008	PRESS WASHER	1
15	GB93-10	STANDARD SPRING WASHER	1
16	GB5781-M10×25	HEXANGULAR BOLT	1
17	C-80-1320003	VERTICAL SHAFT SPRING	1
18	GB77-M12×16	INNER HEXA FLAT TERMINUS SET SCREW	2
19	GB77-M12×12	INNER HEXA FLAT TERMINUS SET SCREW	2
20	C-54-1300006	ROLLER BOLT	1
21	C-54-1300009	ROLLER	1
22	GB5781-M12×30	hexangular bolt	1
23	C-54-1300011	RUBBER COVER	1
24	GB93-12	STANDARD SPRING WASHER	1
25	GB95-12	FLAT WASHER	1
26	C-5B-1300002	VERTICAL SHAFT SPRING	1
27	C-42-1300004	DECORATING COVER	1



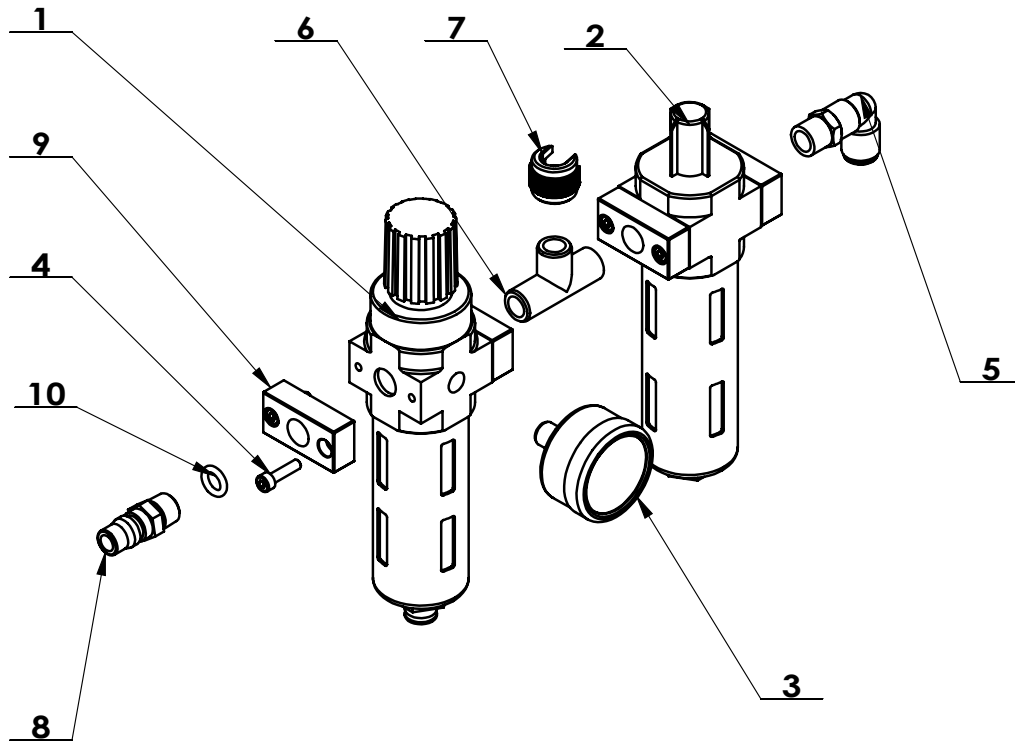
ITEM	PART. No	DESCRIPTION.	QT. Y
1	C-01-1500001	INFLATING GUN	1
2	C-01-1500002	INFLATION HOSE	1
3	C-01-1500003	RING D13XD7X4	1
4	C-01-1500004	OPEN NUT	1



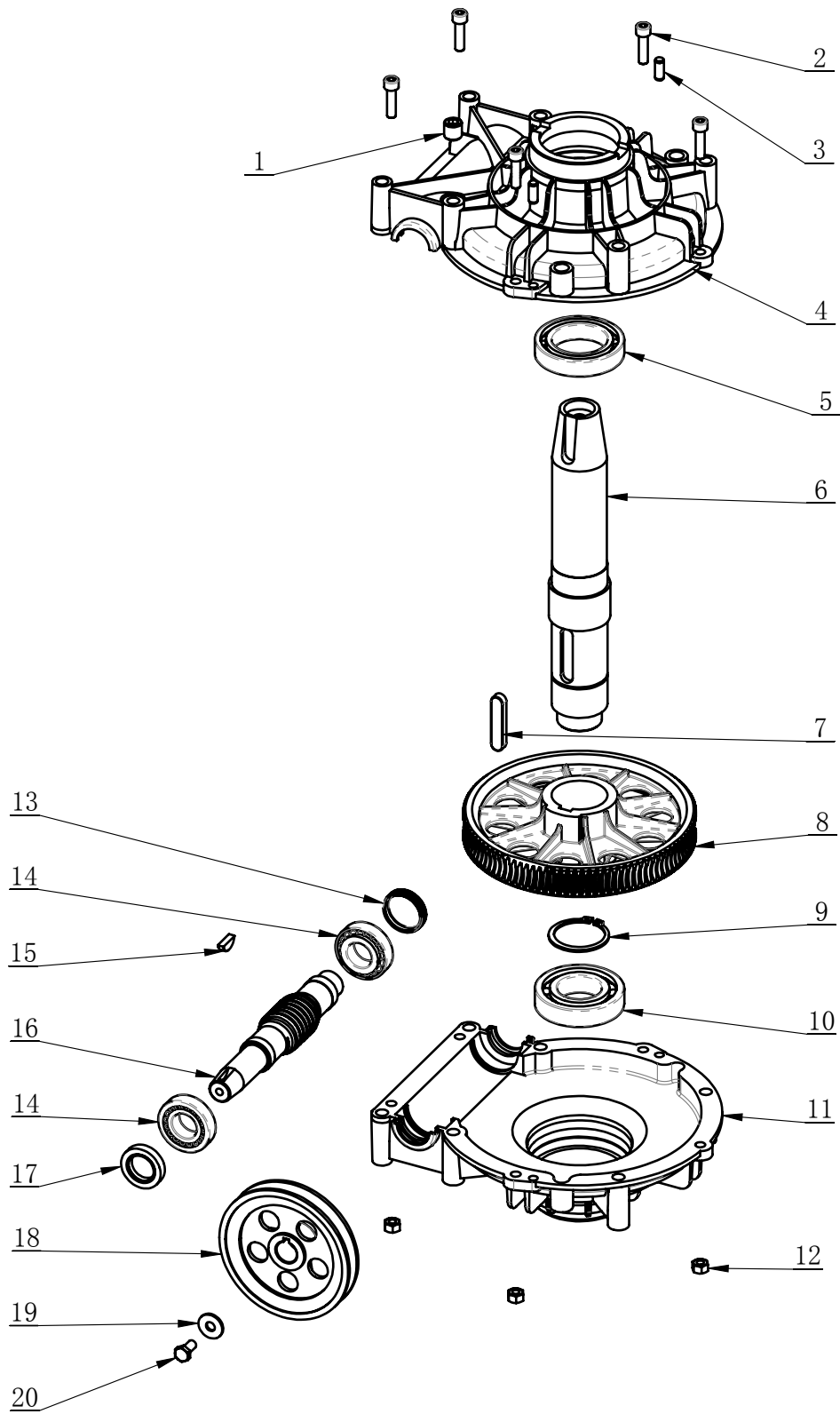
ITEM	PART. No	DESCRIPTION.	QT. Y
1	CT-D-2110000	PEDAL SUPPORT WELDING	1
2	CT-D-2100001	SPACER	1
3	CT-D-2100002	TORSION SPRING	1
4	CT-D-2100003	SPRING	2
5	CT-D-2100004	SPRING PLATE	1
6	CT-D-2100005	SPACER	3
7	CT-D-2100006	PEDAL	1
8	CT-D-2100007	PEDAL	2
9	CT-D-2100008	SWITCH SUPPORT	1
10	CT-D-2100009	BOTTOM SHAFT	1
11	CT-D-2100010	TORSION SPRING BRACKET	1
12	CT-D-2100011	CONNECTION ROD	1
13	CT-D-2100012	ROTATION SHAFT	1
14	CT-D-2100013	HOSE 8-5MM	1
15	CT-D-2120000	CAM BRACKET WELDING	1
16	CT-D-2130000	BRACKET RIVETING	2
17	CT-D-2140000	VALVE	2
18	CT-D-1100008	CAM CONNECTING ROD	1
19	CT-D-1100009	CAM	1
20	CT-D-1100010	REVERSE LEVER	1
21	CT-D-1100016	SPACER	1
22	CT-D-1100011	CAM BAFFLE PLATE	1
23	CT-D-1100014	SWITCH COVER	1
24	CT-D-1100018	SWITCH	1
25	GB894.1-14	SHAFT ELATIC BIG RETAINING RING A-TYPE	2
26	GB889.1-M8	1-TYPE PREVAILING TORQUE TYPE HEXAGON LOCK NUT	5
27	GB95-8	FLAT WASHER	4
28	GB95-5	FLAT WASHER	8
29	GB93-5	STANDARD SPRING WASHER	4
30	GB70.1-M5×25	INNER HEXA CYLINDRICAL SCREW	4
31	GB41-M5	HEXANGULAR NUT	4
32	GB95-6	FLAT WASHER	6
33	GB93-6	STANDARD SPRING WASHER	7
34	GB70.1-M6×25	INNER HEXA CYLINDRICAL SCREW	2
35	GB41-M6	HEXANGULAR NUT	10
36	GB819.1-M6×16-H	CROSS COUNTERSUNK SCREW STEEL 4.8 GRADE	1
37	GB70.1-M6×16	INNER HEXA CYLINDRICAL SCREW	5
38	GB70.1-M6×40	INNER HEXA CYLINDRICAL SCREW	1
39	GB5781-M8×40	HEXANGULAR BOLT	1
40	GB5782-M8×55	HEXANGULAR BOLT	1
41	GB41-M8	HEXANGULAR NUT	2
42	GB845-ST2.9×9.5 H C	CROSS PANHEAD TAPPING SCREW	2
43	GB95-4	FLAT WASHER	1
44	GB93-4	STANDARD SPRING WASHER	1
45	GB818-M4×12-H	CROSS PANHEAD SCREW	1
46	GB819.1-M5×16-H	CROSS COUNTERSUNK SCREW STEEL 4.8 GRADE	4
47	GB95-10	FLAT WASHER	1
48	GB879.1-4×20	ELASTIC CYLINDRICAL PIN, HEAVY	1
49	FPC 8-01	MALE STRAIGHT	4
50	FPD 8-01	MALE RUN TEE	1
51	FPL 8-01	INSERT ELBOW Φ8, R1/8	1
52	FSK 01	PLASTIC PARTICLE SILENCER	4



ITEM	PART. No	DESCRIPTION.	QT. Y
1	CT-DJ-0018112	MOTOR(1.1KW220-240V50Hz)	1
2	GB95-10	FLAT WASHER	4
3	CT-DJ-0000001	MOTOR SUPPORT	1
4	GB96.2-10	LARGE WASHER C GRADE	4
5	GB5781-M10×50	HEXANGULAR BOLT	4
6	GB41-M10	HEXANGULAR NUT	4
7	CT-DJ-0000002	RUBBER WASHER	8
8	CT-DJ-0000003	MOTOR BELT PULLEY	1
9	GB1096-6×6×28	COMMON FLAT KEY	1
10	GB71-M5×16	SLOTTED CONIC HEAD SET SCREW	1
11	GB41-M5	HEXANGULAR NUT	1



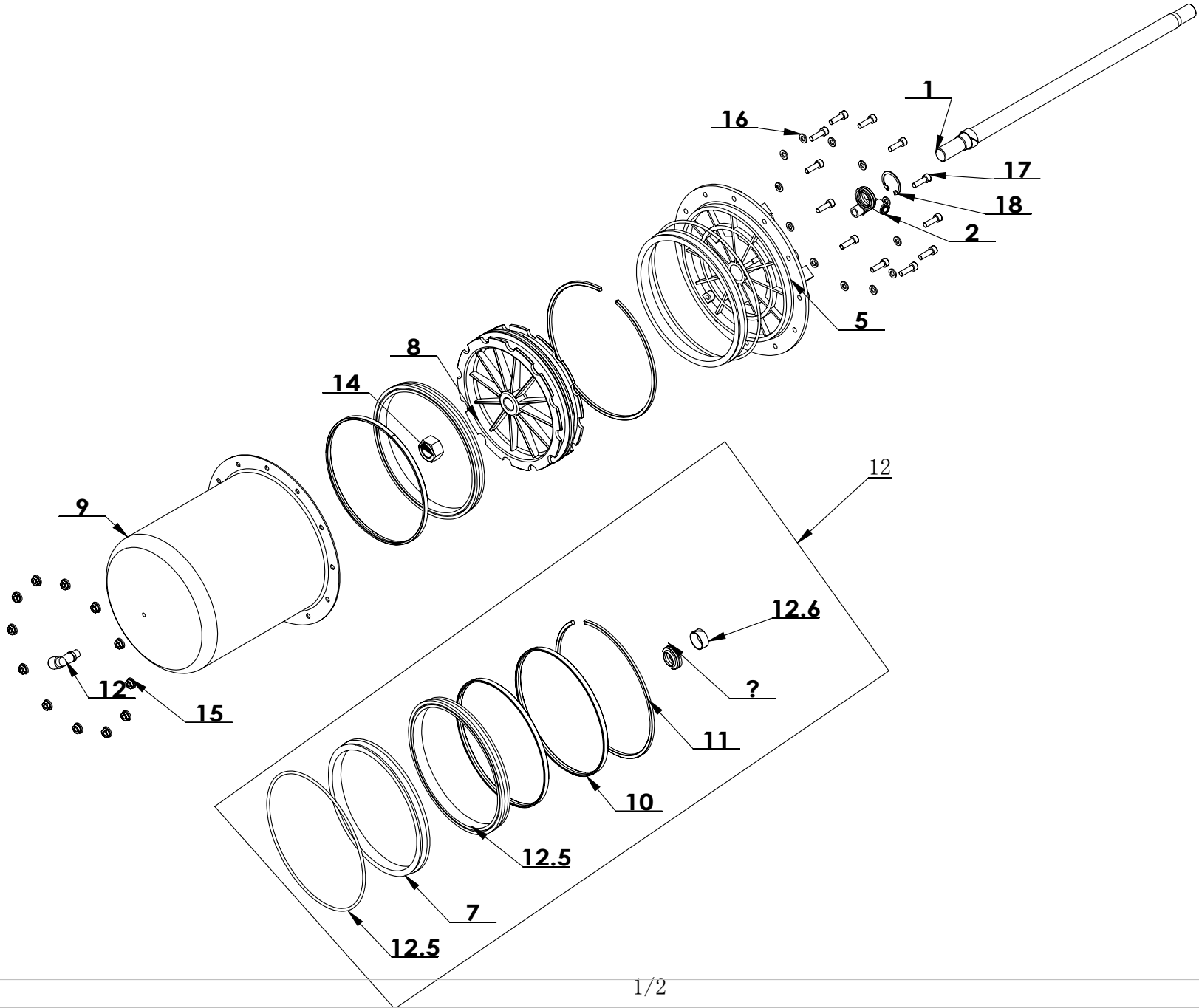
ITEM	PART. No	DESCRIPTION.	QT. Y
1	CT-F-2000001	PRESSURE ADJUST VALVE AND WATER CUP	1
2	CT-F-2000002	OIL CUP	1
3	CT-F-2000003	PRESSURE GAUGE	1
4	GB70. 1-M4×16	INNER HEXA CYLINDRICAL SCREW	8
5	FPL 8-02	INSERT ELBOW $\Phi 8$, R1/4	1
6	PEH 1-4	TEE R1/4	1
7	C-01-1500004	OPEN NUT	1
8	C-01-100000D	AIR SUPPLY CONNECTOR	1
9	CT-F-2000004	CONNECT	4
10	GB3452. 1-8×2.65-A	O-RING G TYPE	1



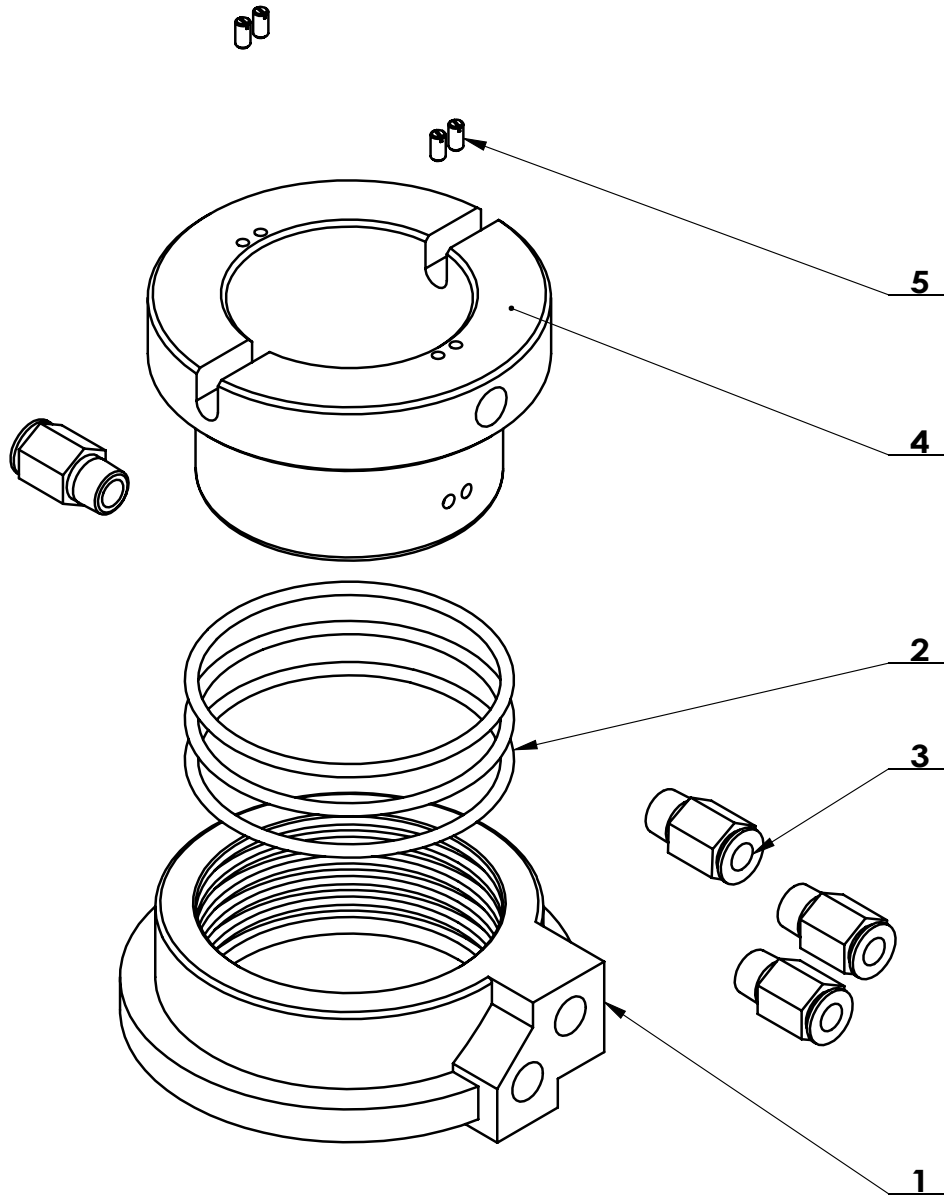
ITEM	PART. No	DESCRIPTION.	QT. Y
1	GB77-M16X1.5-16	SCREW	1
2	GB70.1-M8×30	INNER HEXA CYLINDRICAL SCREW	5
3	GB119.1-8×20	CYLINDRICAL PIN	2
4	CT-J-0000006	GEARBOX TOP	1
5	GB276-6010	DEEP GROOVE BALL BEARINGS	1
6	CT-J-0000001	WORM SHAFT	1
7	GB1096-12×8×56	COMMON FLAT KEY	1
8	CT-J-0000003	WORM	1
9	GB894.1-50	SHAFT ELATIC BIG RETAINING RING A-TYPE	1
10	GB276-6208	DEEP GROOVE BALL BEARINGS	1
11	CT-J-0000005	GEARBOX TOP	1
12	GB41-M8	HEXANGULAR NUT	5
13	CT-J-0100000	CAP	1
14	GB297-30205	CYLINDRICAL BALL BEARING	2
15	GB1099.1-6×9×22	COMMON SEMI-CIRCULAR KEY	1
16	CT-J-0000004	WORM ROD	1
17	FB25-40 GB13871.92	SEALED RING	1
18	CT-J-0000008	BELT PULLEY	1
19	GB96.2-8	LARGE WASHER C GRADE	1
20	GB5781-M8×16	HEXANGULAR BOLT	1

REVISION A-02

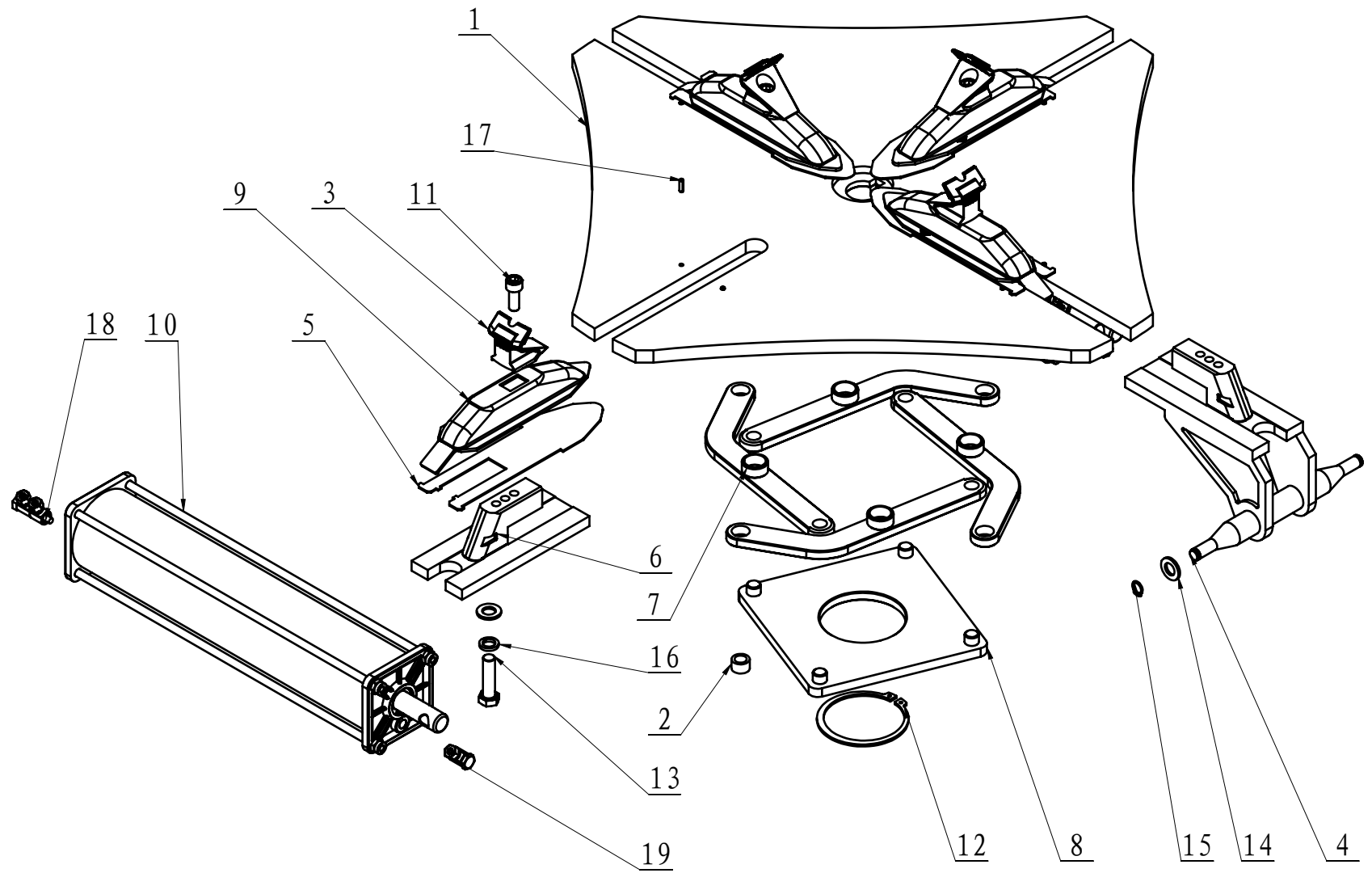
CT-LS-H000000



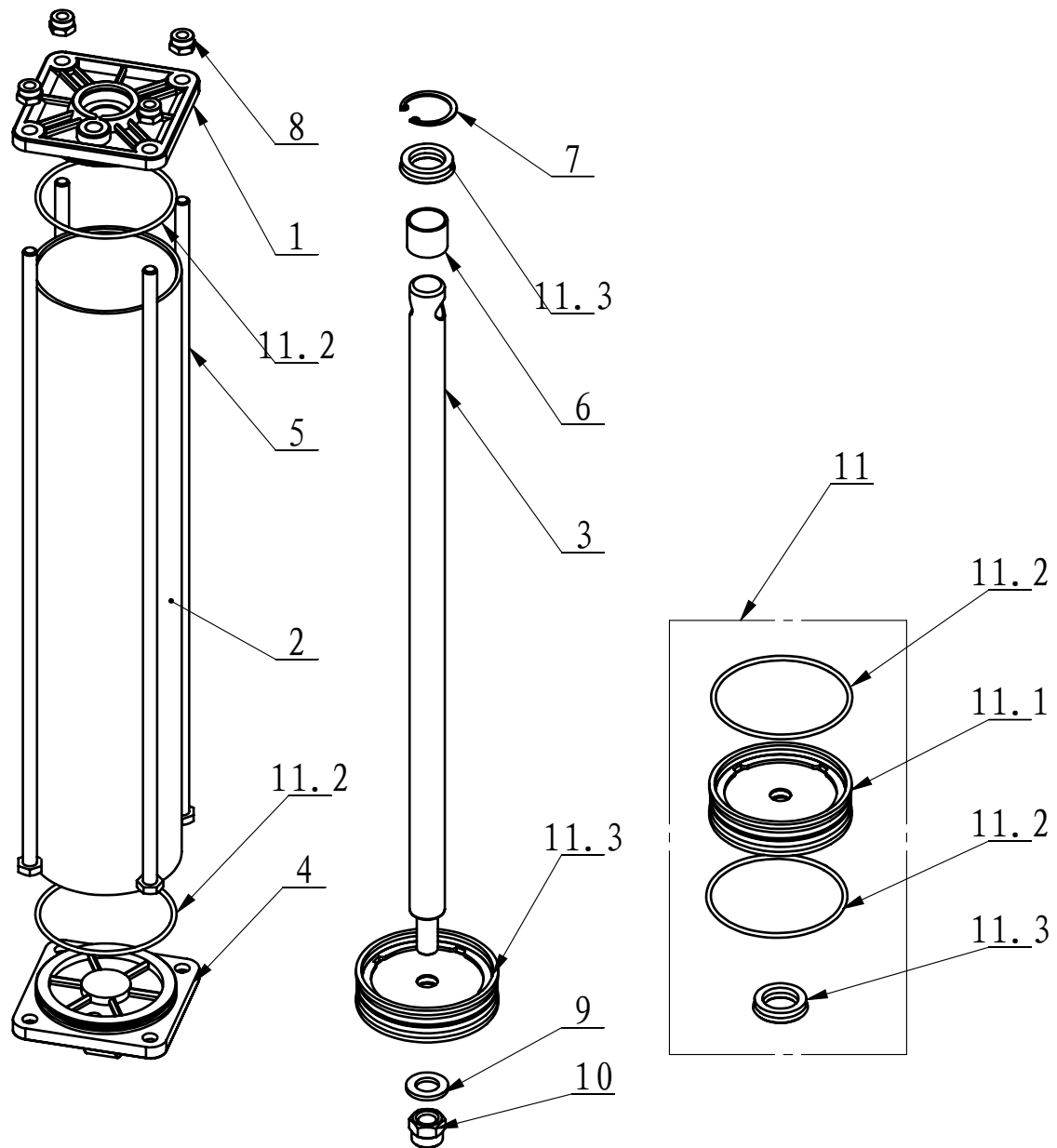
ITEM	PART. No	DESCRIPTION.	QT. Y
1	CT-LS-F000001	SHAFT-CLYNDR, 445	1
2	FPL 8-02	INSERT ELBOW $\Phi 8$, R1/4	1
3	CT-LS-1000004	CYLINDER COVER	1
4	CT-LS-1000002	PISTON	1
5	CT-LS-1000003	CYLINDER BODY	1
6	FPL 8-01	INSERT ELBOW $\Phi 8$, R1/8	1
7	GB6171- M18 \times 1.5	NUT THIN TOOTH	1
8	GB/T 6177.1-M6	HEXA FLANGE NUT	12
9	GB95-6	FLAT WASHER	12
10	GB70.1-M6 \times 20	INNER HEXA CYLINDRICAL SCREW	12
11	GB893.2-30	ELASTIC RETAINING RING B-TYPE	1
12	CT-LS-1100000	CYCLINDER SEALING PARTS ASSEMBLY	1
12.1	CT-LS-1000007	CLAMP RING	2
12.2	CT-LS-1000008	PISTION SUPPORT RING	1
12.3	CT-LS-1000011	Y-RING	2
12.4	GB3452.1-185 \times 3.55-G	O-RING G TYPE	1
12.5	CT-LS-1000009	GUIDER SPACER	1
12.6	CT-Y-0160007	DUSTPROOF SEALING RING	1



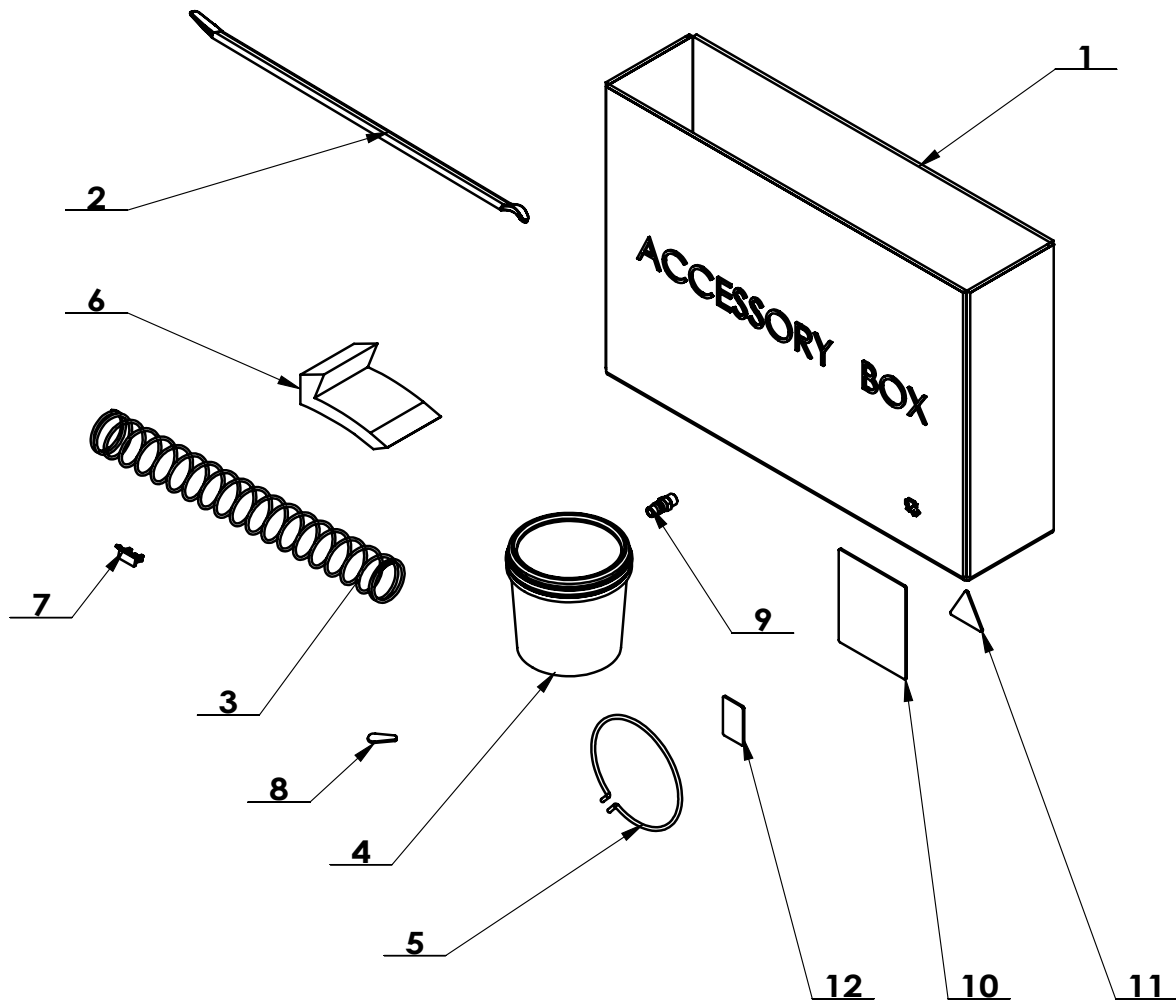
ITEM	PART. No	DESCRIPTION.	QT. Y
1	CT-Q-1000002	AIR GUIDE EXTERNAL BUSHING	1
2	GB3452. 1-60×2. 65-G	O-RING 60X2. 65	3
3	FPC 6-01	MALE STRAIGHT	4
4	CT-Q-1000001	AIR GUIDE ROTATION BUSHING	1
5	GB73-M3×6	SLOTTED FLATTEN HEAD SET SCREW	4



ITEM	PART. No	DESCRIPTION.	QT. Y
1	CT-Y-5110000	TURNTABLE	1
2	CT-Y-0100003	SPACER	4
3	CT-Y-5100002	CLAMP	4
4	CT-Y-5130000	BRACKET-CYLINDER	2
5	CT-Y-5100003	WEARABLE WASHER	4
6	CT-Y-5100001	PRESS BOARD	2
7	CT-Y-6400000	CONNECTION PLATE	4
8	CT-Y-6500000	SQUARE TURNTABLE	1
9	CT-Y-5120000	SLIDE COVER	4
10	CT-Y-6600000	CYLINDER ASSEMBLY D80X350	2
11	GB70. 1-M10 × 25	INNER HEXA CYLINDRICAL SCREW	4
12	GB894. 1-85	SHAFT ELATIC BIG RETAINING RING A-TYPE	1
13	GB5781-M12 × 45	HEXANGULAR BOLT	4
14	GB95-12	FLAT WASHER	8
15	GB894. 1-12	SHAFT ELATIC BIG RETAINING RING A-TYPE	4
16	GB93-12	STANDARD SPRING WASHER	4
17	GB879. 1-4 × 14	ELASTIC CYLINDRICAL PIN HEAVY	8
18	CT-Y-6000008	HINGE TEE $\Phi 8$ R1/8"	2
19	CT-Y-6000007	HINGE ELBOW $\Phi 8$ R1/8"	2



ITEM	PART. No	DESCRIPTION.	QT. Y
1	CT-Y-6600001	CYLINDER FRONT COVER	1
2	CT-Y-6600002	CYLINDER 80MM	1
3	CT-Y-6600003	SHAFT-CLYDR	1
4	CT-Y-6600005	CAP-BASE, CYLNDR	1
5	CT-Y-6600006	BOLT	4
6	JH1 2020	BEARING-SLIDE	1
7	GB893. 1-30	ELASTIC RETAINING RING A-TYPE	1
8	GB889. 1-M8	1-TYPE PREVAILING TORQUE TYPE HEXAGON LOCK NUT	4
9	GB95-12	FLAT WASHER	1
10	GB889. 1-M12	1- TYPE PREVAILING TORQUE TYPE HEXAGON LOCK NUT	1
11	CT-Y-6620000	CYCLINDER SEALING PARTS ASSEMBLY	1
11.1	CT-Y-6610000	PISTON	1
11.2	GB3452. 1-75×2.65-G	HYDRAULIC-PNEUMATIC RUBBER O-RING G TYPE	2
11.3	CT-Y-0160007	SEAL-ROD, CYLNDR	1



ITEM	PART. No	DESCRIPTION.	QT. Y
1	C-01-8000001	ACCESSORY BOX	1
2	C-01-1000008	CROWBAR 20 "	1
3	C-42-1300003	VERTICAL SHAFT SPRING	1
4	C-01-1300000	GREASE CONTAINER	1
5	C-01-1000005	BRACKET	1
6	C-01-8000002	CLAMP PROTECTION COVER	5
7	C-31-1300014	SHEATH	2
8	C-31-1300015	PLASTIC COVER	1
9	C-01-1000000D	AIR SUPPLY CONNECTOR	1
10	C-31-8000001	USER MANUAL	1
11	C-31-8000002	PASS CARD	1
12	C-31-8000003	GUARANTEE	1