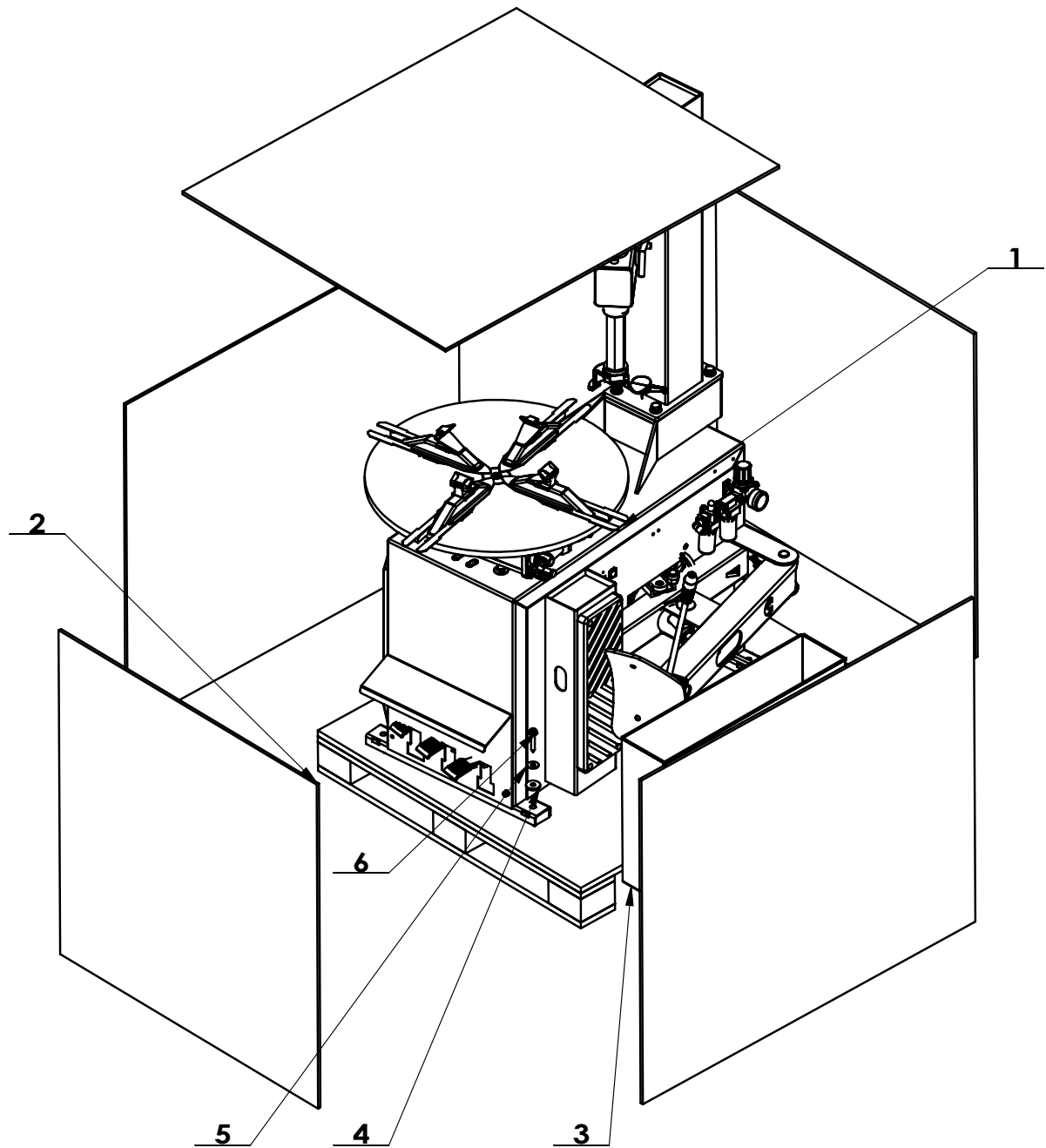


# Exploded Drawing

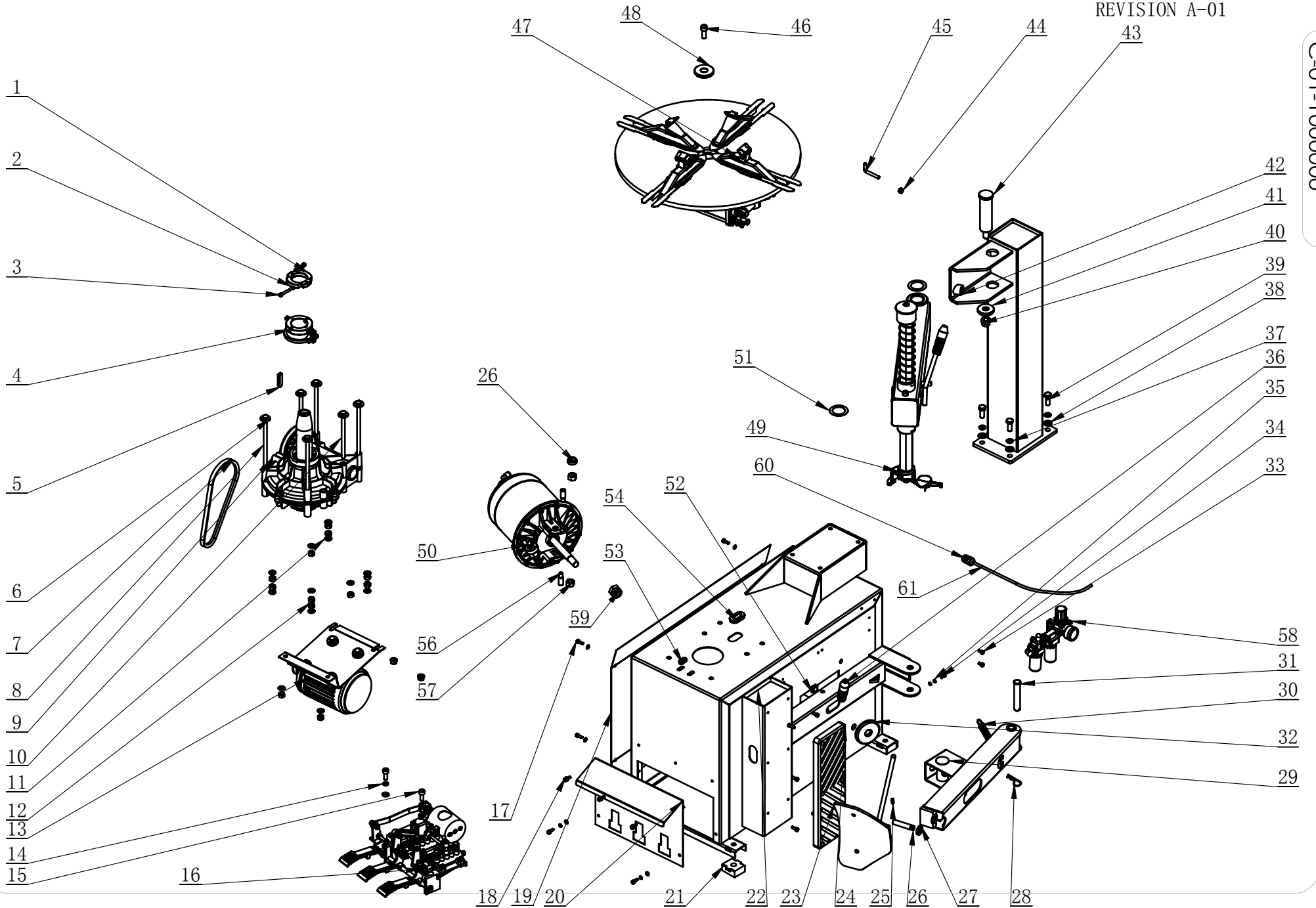
C-01-0000000



| ITEM | PART. NO            | DESCRIPTION               | QT. Y |
|------|---------------------|---------------------------|-------|
| 1    | C-01-1000000        | FINAL ASSEMBLY            | 1     |
| 2    | C-02-9000000        | PACKAGE                   | 1     |
| 3    | C-01-8000000        | ACCESSORY BOX             | 1     |
| 4    | C-70-9000003        | WASHER                    | 1     |
| 5    | GB96. 2-8           | LARGE WASHER C GRADE      | 1     |
| 6    | GB16824. 1-ST8×50 C | HEXA FLANGE TAPPING SCREW | 1     |

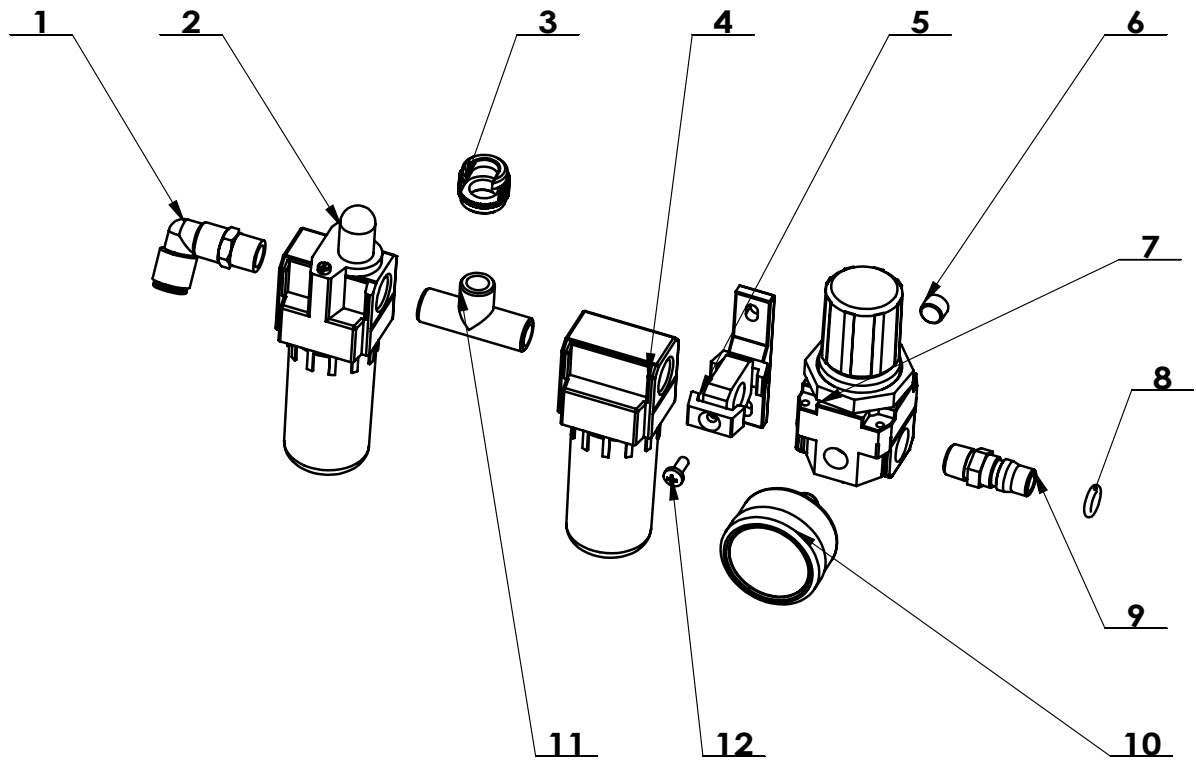
REVISION A-01

C-01-100000

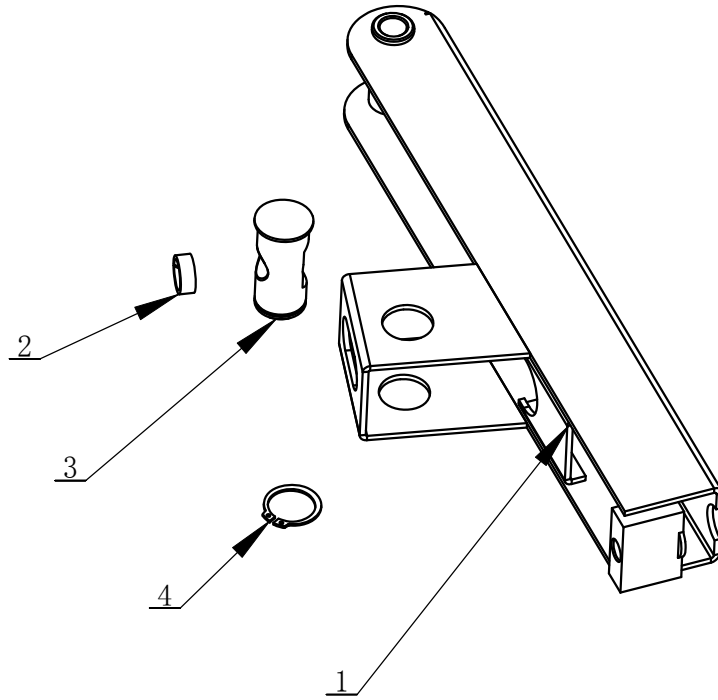


| ITEM | PART. NO          | DESCRIPTION                                   | QT. Y |
|------|-------------------|---|-------|
| 1    | CT-Q-0000001      | CLAMP RING                                    | 1     |
| 2    | GB93-6            | STANDARD SPRING WASHER                        | 7     |
| 3    | GB70.1-M6×35      | INNER HEXA CYLINDRICAL SCREW                  | 2     |
| 4    | CT-Q-1200000      | ROTATING UNION                                | 1     |
| 5    | GB1096-C12×8×45   | COMMON FLAT KEY                               | 1     |
| 6    | GB96.1-10         | LARGE WASHER A GRADE                          | 6     |
| 7    | CT-DJ-0000007     | Triangle belt                                 | 1     |
| 8    | GB5780- M10X200-N | BOLT M10X200                                  | 4     |
| 9    | CT-J-3100000      | GEARBOX ASSEMBLY                              | 1     |
| 10   | GB5780 M10X160-N  | BOLT M10X160                                  | 2     |
| 11   | GB95-10           | FLAT WASHER                                   | 16    |
| 12   | GB41-M10          | HEXANGULAR NUT                                | 14    |
| 13   | CT-DJ-0334122     | MOTOR ASSEMBLY                                | 1     |
| 14   | GB93-10           | STANDARD SPRING WASHER                        | 2     |
| 15   | GB70.1-M10×25     | INNER HEXA CYLINDRICAL SCREW                  | 2     |
| 16   | CT-D-1100000      | PEDAL ASSEMBLY                                | 1     |
| 17   | GB70.1-M6×16      | INNER HEXA CYLINDRICAL SCREW                  | 15    |
| 18   | GB95-6            | FLAT WASHER                                   | 9     |
| 19   | C-01-1000001      | SIDE PANEL                                    | 1     |
| 20   | C-01-1000002      | PROTECTIVE COVER                              | 1     |
| 21   | C-54-1000005      | RUBBER FOOT                                   | 4     |
| 22   | C-01-1100000      | BODY  | 1     |
| 23   | CT-C-3100000      | BEAD BREAKER BLADE                            | 1     |
| 24   | C-10-1000001      | RIM SUPPORT                                   | 1     |
| 25   | GB85-M6×12        | SQUARE HEAD CYLINDRICAL<br>TERMINUS SET SCREW | 1     |
| 26   | CT-C-3000001      | ROTATION SPINDLE                              | 1     |
| 27   | GB955-14          | WAVE-FORM SPRING WASHER                       | 1     |
| 28   | C-01-100000B      | CIRCLIP                                       | 1     |
| 29   | CT-B-4000000      | BEAD BREAKING ARM<br>ASSEMBLY                 | 1     |
| 30   | CT-B-3000001      | SPRING  | 1     |
| 31   | GB882-18×100      | PIN SHAFT                                     | 1     |

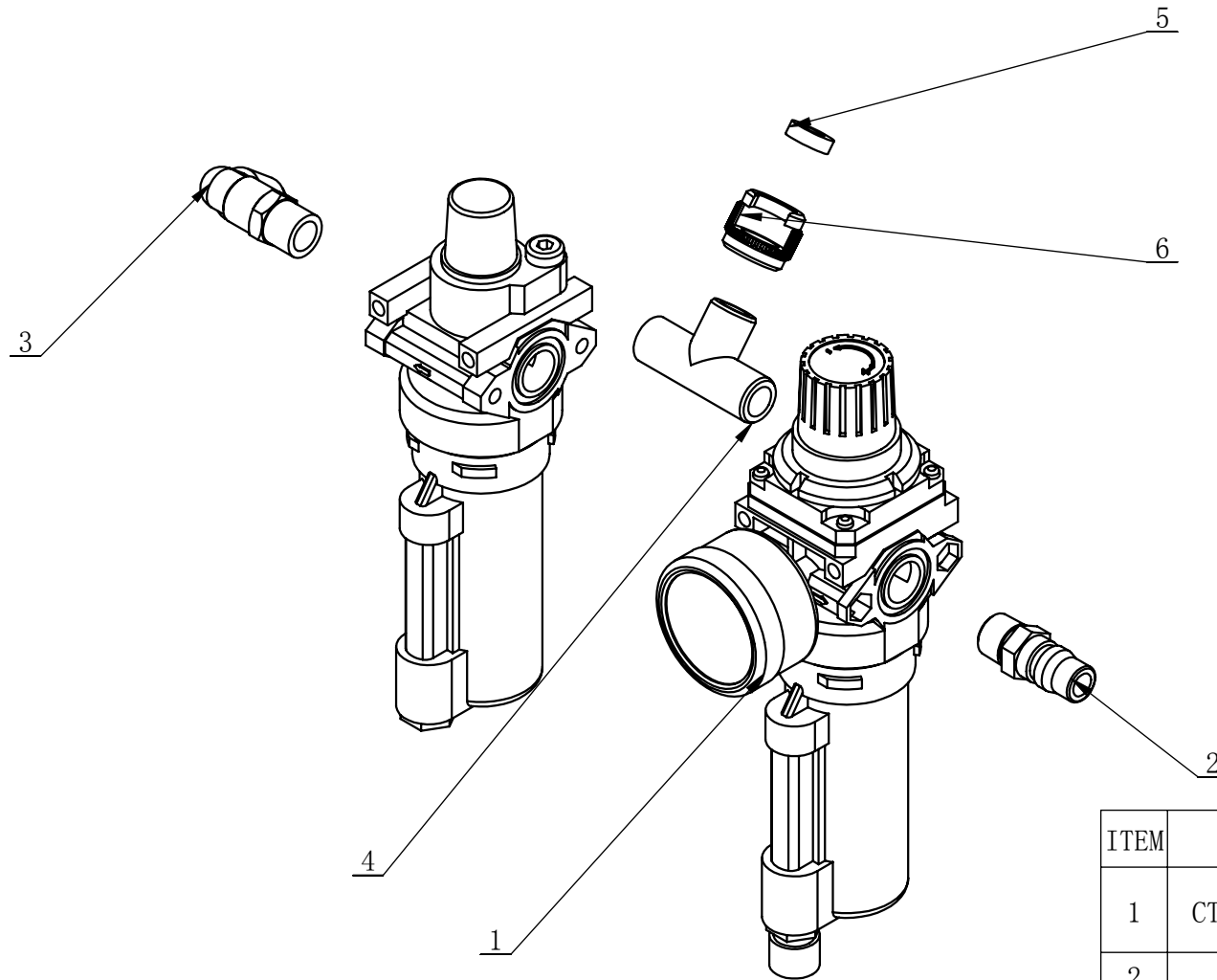
| ITEM | PART. NO               | DESCRIPTION                                       | QT. Y |
|------|------------------------|---|-------|
| 32   | C-10-1000003           | RUBBER LATE                                       | 1     |
| 33   | GB70. 1-M6×10          | INNER HEXA CYLINDRICAL SCREW                      | 2     |
| 34   | GB5781-M5×12           | HEXANGULAR BOLT                                   | 1     |
| 35   | GB95-5                 | FLAT WASHER                                       | 2     |
| 36   | C-54-1300011           | HANDLE COVER                                      | 1     |
| 37   | GB93-12                | STANDARD SPRING WASHER                            | 4     |
| 38   | GB95-12                | FLAT WASHER                                       | 4     |
| 39   | GB5781-M12×30          | HEXANGLUAR BOLT                                   | 4     |
| 40   | GB/T 889. 1-2000 - M16 | 1-TYPE PREVAILING TORQUE TYPE<br>HEXAGON LOCK NUT | 1     |
| 41   | C-54-1000009           | SHAFT WASHER                                      | 1     |
| 42   | C-01-1200000           | VERTICAL COLUMN                                   | 1     |
| 43   | C-42-1000002           | ROCKER VERTICAL SHAFT                             | 1     |
| 44   | GB41-M8                | HEXANGULAR NUT                                    | 1     |
| 45   | C-60-1000002           | INFLATING GUN HOOK                                | 1     |
| 46   | GB70. 1-M12×30         | INNER HEXA CYLINDRICAL SCREW                      | 1     |
| 47   | CT-Y-0700000           | TURNTABLE ASSEMBLY                                | 1     |
| 48   | CT-Y-0100001           | PRESS COVER                                       | 1     |
| 49   | C-42-1300000           | SWING ARM   | 1     |
| 50   | CT-LS-A000000          | BEAD BREAKER CYLINDER ASSEMBLY                    | 1     |
| 51   | C-54-1000002           | ADJUSTING WASHER                                  | 2     |
| 52   | C-90-1000001           | STOP-UP   | 1     |
| 53   | C-90-1000003           | PLUG A  | 2     |
| 54   | C-90-1000002           | PLUG B  | 1     |
| 26   | C-70-1000011           | SEALED COVER                                      | 1     |
| 56   | C-70-1000021           | INNER HEXA CYLINDRICAL TERMINUS<br>SET SCREW      | 2     |
| 57   | GB41-M14               | HEXANGULAR NUT                                    | 2     |
| 58   | CT-F-3212131           | AIR REGULATOR ASSEMBIY                            | 1     |
| 59   | GB889. 1-M18X1. 5      | PRRVAILING TORQUE M18X1. 5                        | 1     |
| 60   | C-01-1000004           | CABLE CONNECTOR                                   | 1     |
| 61   | C-01-1000003           | POWER CABLE ASSEMBLY                              | 1     |



| ITEM | PART. No                   | DESCRIPTION.                             | QT. Y |
|------|----------------------------|--|-------|
| 1    | FPL 8-02                   | INSERT ELBOW $\Phi 8$ , R1/4             | 1     |
| 2    | CT-F-3000002               | OIL CUP                                  | 1     |
| 3    | C-01-1500004               | OPEN NUT                                 | 1     |
| 4    | CT-F-3000001               | WATER CUP                                | 1     |
| 5    | CT-F-3000005               | BRACKET                                  | 1     |
| 6    | FPS 01                     | PLUG MAIN BLOCK                          | 1     |
| 7    | H-40-1600001               | PRESSURE ADJUST VALVE                    | 1     |
| 8    | GB3452.1-8 $\times$ 2.65-A | HYDRAULIC-PNEUMATIC RUBBER O-RING A TYPE | 1     |
| 9    | C-01-100000D               | AIR SUPPLY CONNECTOR                     | 1     |
| 10   | CT-F-3000004               | PRESSURE GAUGE                           | 1     |
| 11   | PEH 02-02                  | FAMALE UNION TEE                         | 1     |
| 12   | GB818-M4 $\times$ 10-H     | CROSS PANHEAD SCREW                      | 2     |

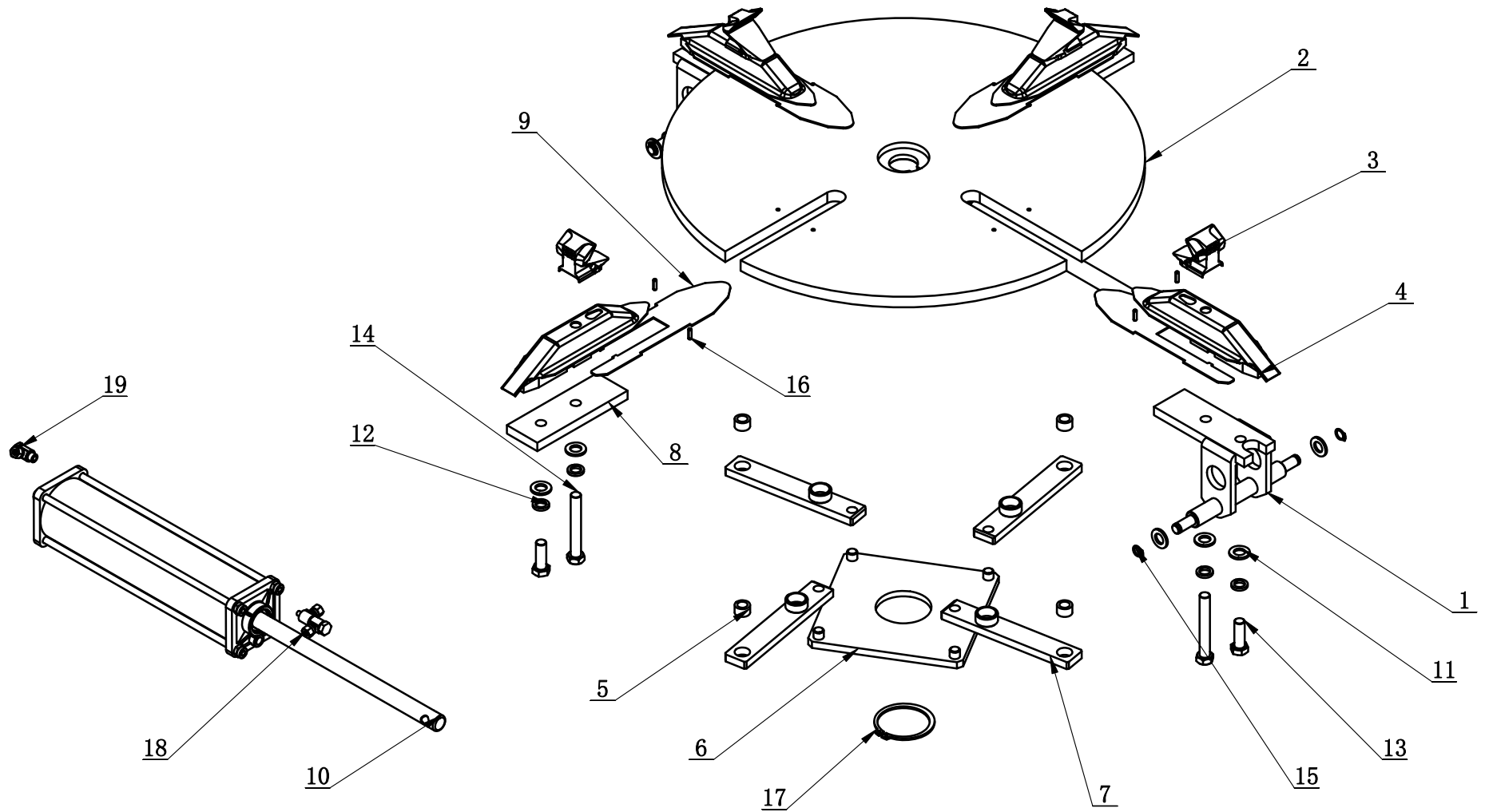


| ITEM | FILE NAME    | DESCRIPTION                     | QTY |
|------|--------------|---------------------------------|-----|
| 1    | CT-B-4100000 | BEAD BREAKING ARM ASSEMBLY      | 1   |
| 2    | CT-B-2000001 | SLIDE SPACER                    | 1   |
| 3    | CT-B-4000001 | BEAD BREAKING ARM SLIDE BUSHING | 1   |
| 4    | GB894.1-34   | RING A-TYPE                     | 1   |

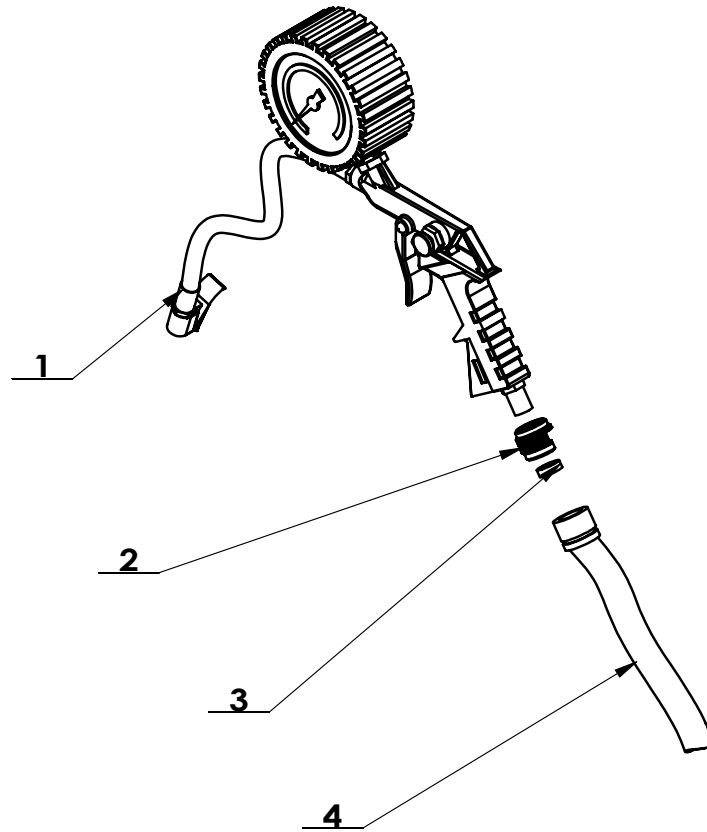


| ITEM | PART. NO     | DESCRIPTION                  | QT. Y |
|------|--------------|------------------------------|-------|
| 1    | CT-F-4110000 | AIR SUPPLY CONNECTOR         | 1     |
| 2    | BKSJT-XX     | AIR SUPPLY CONNECTOR         | 1     |
| 3    | FPL 8-02     | INSERT ELBOW $\Phi 8$ , R1/4 | 1     |
| 4    | PEH 1-4      | TEE R1/4                     | 1     |
| 5    | C-01-1500003 | RING D13XD7X4                | 1     |
| 6    | C-01-1500004 | OPEN NUT                     | 1     |

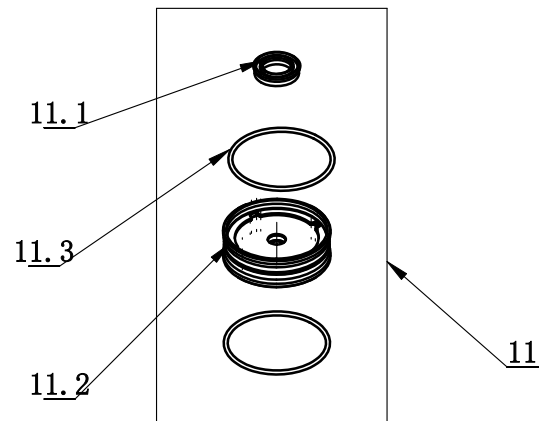
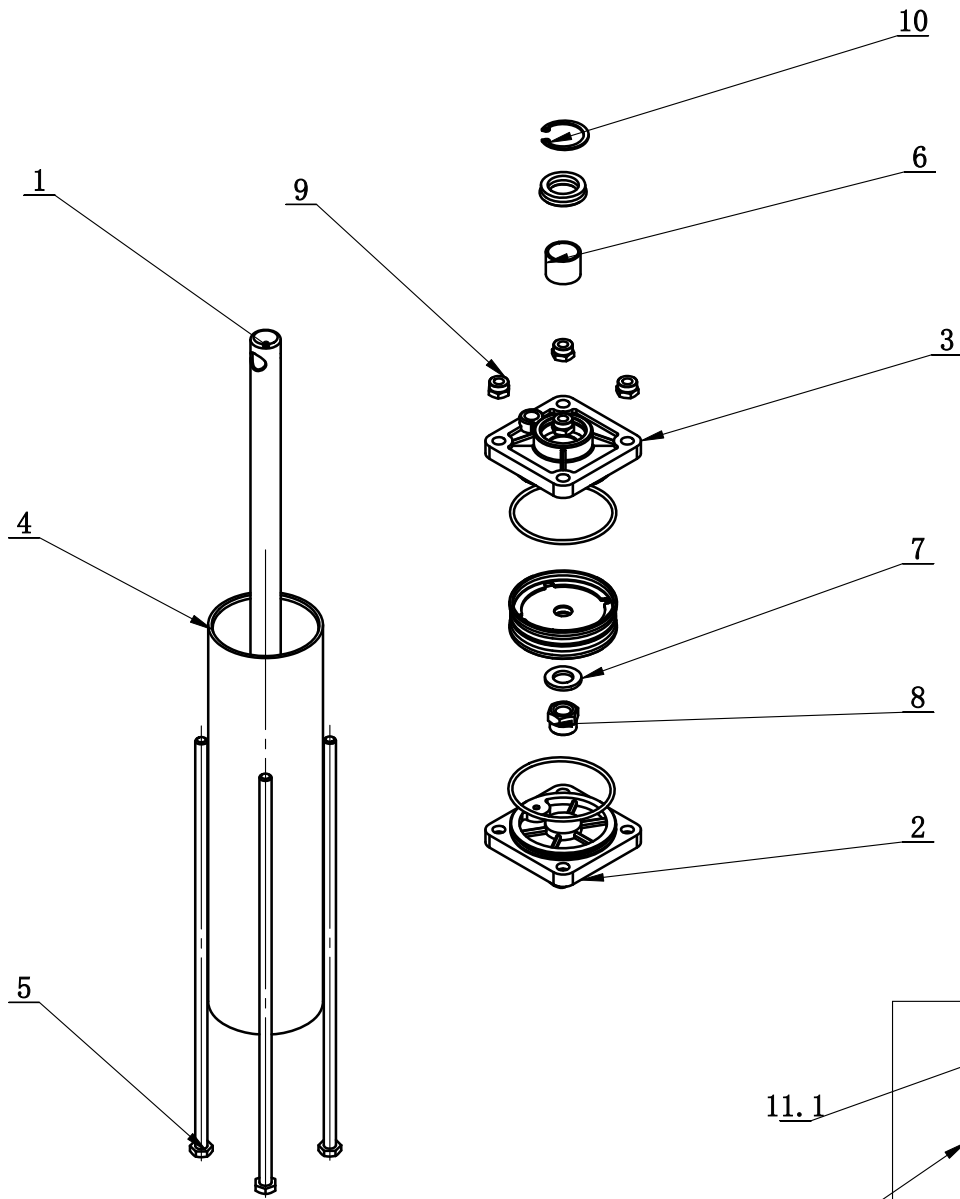




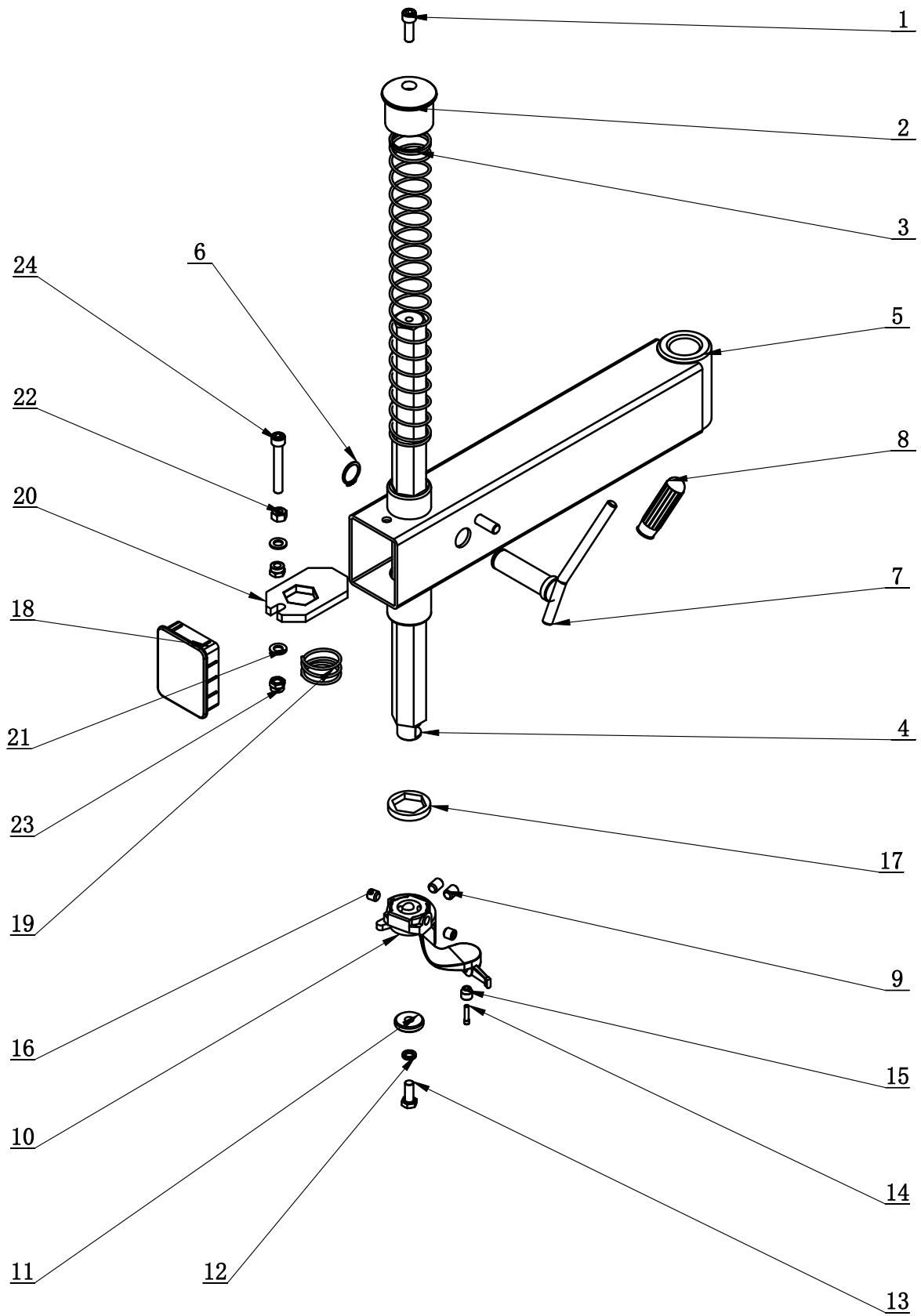
| ITEM | PART. No      | DESCRIPTION.                           | QT. Y |
|------|---------------|--|-------|
| 1    | CT-Y-0130000  | CYLINDER BRACKET                       | 2     |
| 2    | CT-Y-0210000  | TURNTABLE                              | 1     |
| 3    | CT-Y-0100002  | CLAMP                                  | 4     |
| 4    | CT-Y-0710000  | SLIDE COVER                            | 4     |
| 5    | CT-Y-0100003  | SPACER                                 | 4     |
| 6    | CT-Y-0150000  | SQUARE TURNTABLE                       | 1     |
| 7    | CT-Y-0140000  | CONNECTION PLATE                       | 4     |
| 8    | CT-Y-0100004  | PRESS PLATE                            | 2     |
| 9    | CT-Y-0300001  | WEAR-RESISTANCE WASHER                 | 4     |
| 10   | CT-Y-0160000  | CYLINDER ASSEMBLY                      | 2     |
| 11   | GB95-12       | FLAT WASHER                            | 12    |
| 12   | GB93-12       | STANDARD SPRING WASHER                 | 8     |
| 13   | GB5781-M12×35 | HEXANGULAR BOLT                        | 4     |
| 14   | GB5780 M12X85 | HEXANGULAR BOLT                        | 4     |
| 15   | GB894. 1-12   | SHAFT ELATIC BIG RETAINING RING A-TYPE | 4     |
| 16   | GB879. 1-4×14 | ELASTIC CYLINDRICAL PIN HEAVY          | 8     |
| 17   | GB894. 1-65   | SHAFT ELATIC BIG RETAINING RING A-TYPE | 1     |
| 18   | CT-Y-0100005  | HINGE TEE $\Phi 6 R1/8''$              | 2     |
| 19   | CT-Y-0100006  | HINGE ELBOW $\Phi 6 R1/8''$            | 2     |



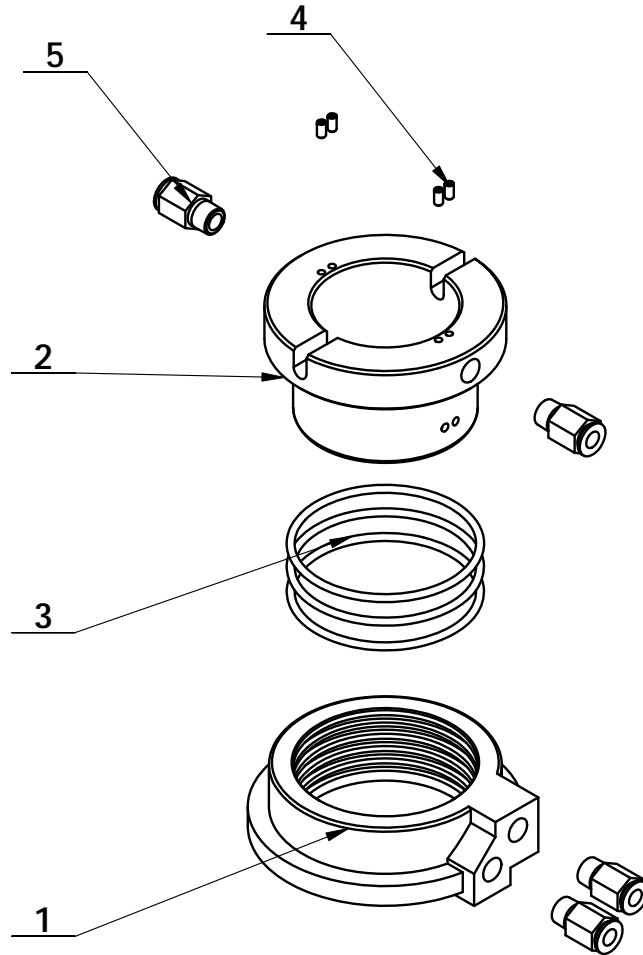
| ITEM | PART. No     | DESCRIPTION.   | QT. Y |
|------|--------------|----------------|-------|
| 1    | C-10-1300001 | INFLATING GUN  | 1     |
| 2    | C-01-1500004 | OPEN NUT       | 1     |
| 3    | C-01-1500003 | RING D13XD7X4  | 1     |
| 4    | C-01-1500002 | INFLATION HOSE | 1     |



| ITEM  | PART. No             | DESCRIPTION.                                   | QT. Y |
|-------|----------------------|--|-------|
| 1     | CT-Y-0160001         | SHAFT-CYLNR                                    | 1     |
| 2     | CT-Y-0160003         | REAR COVER                                     | 1     |
| 3     | CT-Y-0160002         | FRONT COVER                                    | 1     |
| 4     | CT-Y-0160006         | SLEEVE-CYLNR 70                                | 1     |
| 5     | CT-Y-0160004         | BOLT   | 4     |
| 6     | JH1 2020             | BEARING-SLIDE                                  | 1     |
| 7     | GB95-12              | FLAT WASHER                                    | 1     |
| 8     | GB889. 1 M12         | 1-TYPE PREVAILING TORQUE TYPE HEXAGON LOCK NUT | 1     |
| 9     | GB889. 1-M8          | 1-TYPE PREVAILING TORQUE TYPE HEXAGON LOCK NUT | 4     |
| 10    | GB893. 1-30          | ELASTIC RETAINING RING A-TYPE                  | 1     |
| 11    | CT-Y-1121000         | CYLINDER SEALING PARTS ASSEMBLY                | 1     |
| 11. 1 | CT-Y-0160007         | SEAL-ROD, CYLNR                                | 1     |
| 11. 2 | CT-Y-0161000         | PISTON-W/WSHR, ASSY                            | 1     |
| 11. 3 | GB3452. 1-65×2. 65-G | HYDRAULIC-PNEUMATIC RUBBER O-RING G TYPE       | 2     |

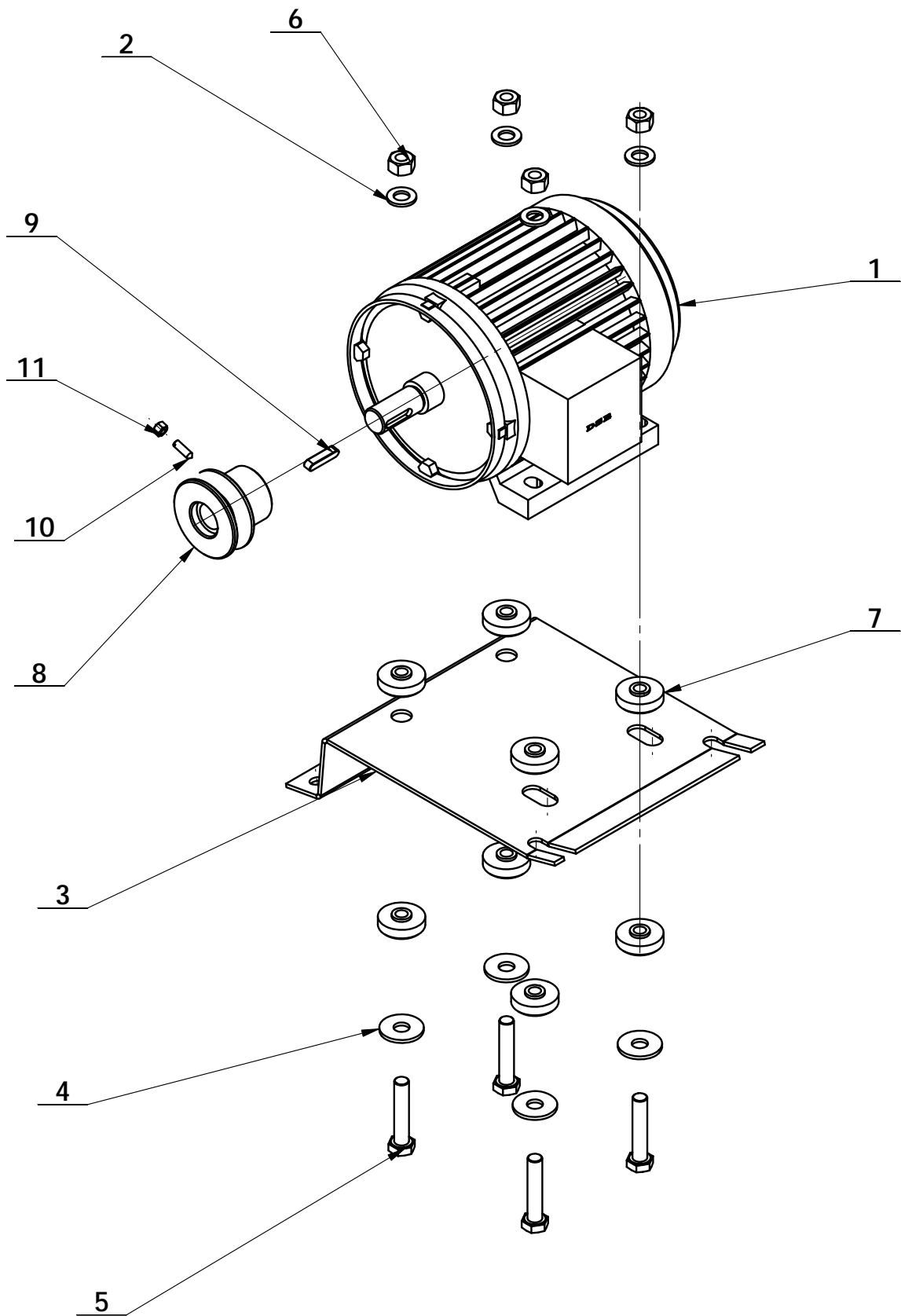


| ITEM | PART. No      | DESCRIPTION.                                      | QT. Y |
|------|---------------|---|-------|
| 1    | GB70.1 M10×30 | INNER HEXA CYLINDRICAL SCREW                      | 1     |
| 2    | C-54-1300005  | VERTICAL SHAFT COVER                              | 1     |
| 3    | C-42-1300003  | VERTICAL SHAFT SPRING                             | 1     |
| 4    | C-42-1300002  | HEXAGON SHAFT                                     | 1     |
| 5    | C-42-1310000  | SWING ARM   | 1     |
| 6    | GB894.1-25    | SHAFT ELATIC BIG RETAINING RING<br>A-TYPE         | 1     |
| 7    | C-54-1320000  | LOCK HANDLE                                       | 1     |
| 8    | C-54-1300011  | RUBBER COVER                                      | 1     |
| 9    | GB77-M12×16   | INNER HEXA FLAT TERMINUS SET<br>SCREW             | 2     |
| 10   | C-42-1320001  | DEMOUNTING HEAD                                   | 1     |
| 11   | C-54-1300008  | PRESS WASHER                                      | 1     |
| 12   | GB93-10       | STANDARD SPRING WASHER                            | 1     |
| 13   | GT5781 M10×25 | HEXANGULAR BOLT                                   | 1     |
| 14   | C-54-1300012  | ROLLER BOLT                                       | 1     |
| 15   | C-54-1300009  | ROLLER  | 1     |
| 16   | GB77 M12×12   | INNER HEXA FLAT TERMINUS SET<br>SCREW             | 2     |
| 17   | C-54-1300007  | SHOCK ABSORBER WASHER                             | 1     |
| 18   | C-42-1300004  | DECORATING COVER                                  | 1     |
| 19   | C-54-1300003  | VERTICAL SHAFT SPRING                             | 1     |
| 20   | C-54-1300004  | HEXAGON LOCK PLATE                                | 1     |
| 21   | GB95-10       | FLAT WASHER                                       | 2     |
| 22   | GB41-M10      | HEXANGULAR NUT                                    | 1     |
| 23   | GB889.1-M10   | 1-TYPE PREVAILING TORQUE TYPE<br>HEXAGON LOCK NUT | 2     |
| 24   | GB70.1 M10×70 | INNER HEXA CYLINDRICAL SCREW                      | 1     |



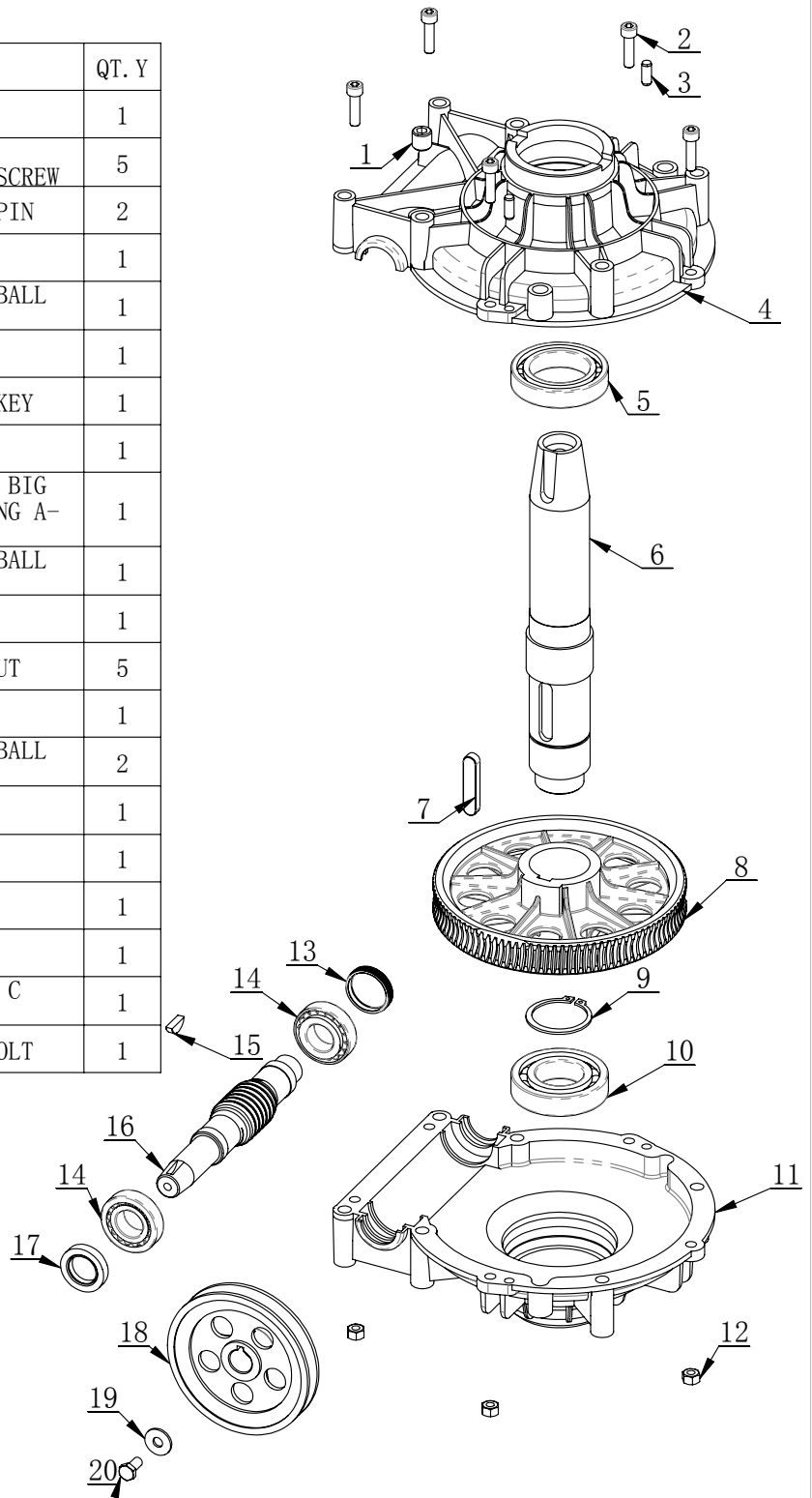
| ITEM | PART. No             | DESCRIPTION.                             | QT. Y |
|------|----------------------|--|-------|
| 1    | CT-Q-1000002         | AIR GUIDE EXTERNAL COVER                 | 1     |
| 2    | CT-Q-1000001         | AIR GUIDE ROTATION BUSHING               | 1     |
| 3    | GB3452. 1-60×2. 65-G | HYDRAULIC-PNEUMATIC RUBBER O-RING G TYPE | 3     |
| 4    | GB73- M3×6           | SLOTTED FLATTEN HEAD SET SCREW           | 4     |
| 5    | FPC 6-01             | INSERT FITTING $\Phi 6, R1/8$            | 4     |

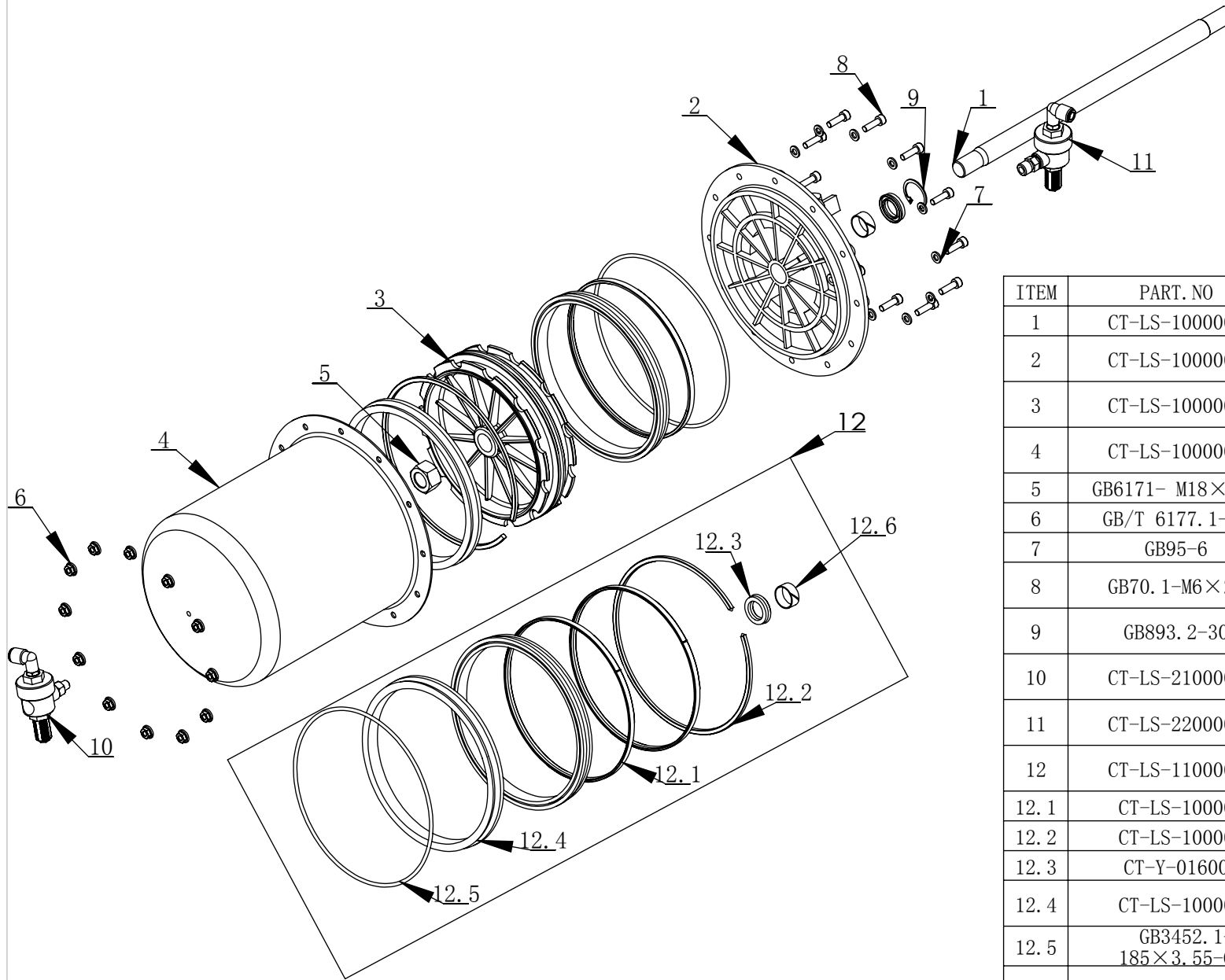




| ITEM | PART. No      | DESCRIPTION.                 | QT. Y |
|------|---------------|------------------------------|-------|
| 1    | CT-DJ-0034122 | MOTOR (380V)50Hz             | 1     |
| 2    | GB95-10       | FLAT WASHER                  | 4     |
| 3    | CT-DJ-0000001 | MOTOR SUPPORT                | 1     |
| 4    | GB96.2-10     | LARGE WASHER C GRADE         | 4     |
| 5    | GB5781-M10×50 | HAXANGULAR BOLT              | 4     |
| 6    | GB41-M10      | HEXANGULAR NUT               | 4     |
| 7    | CT-DJ-0000002 | RUBBER WASHER                | 8     |
| 8    | CT-DJ-0000004 | MOTOR BELT PULLEY            | 1     |
| 9    | GB1096-6×6×28 | COMMON FLAT KEY              | 1     |
| 10   | GB71-M5×16    | SLOTTED CONIC HEAD SET SCREW | 1     |
| 11   | GB41-M5       | HEXANGULAR NUT               | 1     |

| ITEM | PART. No           | DESCRIPTION.                           | QT. Y |
|------|--------------------|--|-------|
| 1    | GB77-M16X1.5-16    | SCREW                                  | 1     |
| 2    | GB70.1-M8×30       | INNER HEXA CYLINDRICAL SCREW           | 5     |
| 3    | GB119.1-8×20       | CYLINDRICAL PIN                        | 2     |
| 4    | CT-J-0000006       | GEARBOX TOP                            | 1     |
| 5    | GB276-6010         | DEEP GROOVE BALL BEARINGS              | 1     |
| 6    | CT-J-0000001       | WORM SHAFT                             | 1     |
| 7    | GB1096-12×8×56     | COMMON FLAT KEY                        | 1     |
| 8    | CT-J-0000003       | WORM                                   | 1     |
| 9    | GB894.1-50         | SHAFT ELATIC BIG RETAINING RING A-TYPE | 1     |
| 10   | GB276-6208         | DEEP GROOVE BALL BEARINGS              | 1     |
| 11   | CT-J-0000005       | GEARBOX TOP                            | 1     |
| 12   | GB41-M8            | HEXANGULAR NUT                         | 5     |
| 13   | CT-J-0100000       | CAP                                    | 1     |
| 14   | GB297-30205        | CYLINDRICAL BALL BEARING               | 2     |
| 15   | GB1099.1-6×9×22    | COMMON SEMI-CIRCULAR KEY               | 1     |
| 16   | CT-J-0000004       | WORM ROD                               | 1     |
| 17   | FB25-40 GB13871.92 | SEALED RING                            | 1     |
| 18   | CT-J-0000008       | BELT PULLEY                            | 1     |
| 19   | GB96.2-8           | LARGE WASHER C GRADE                   | 1     |
| 20   | GB5781-M8×16       | HEXANGULAR BOLT                        | 1     |

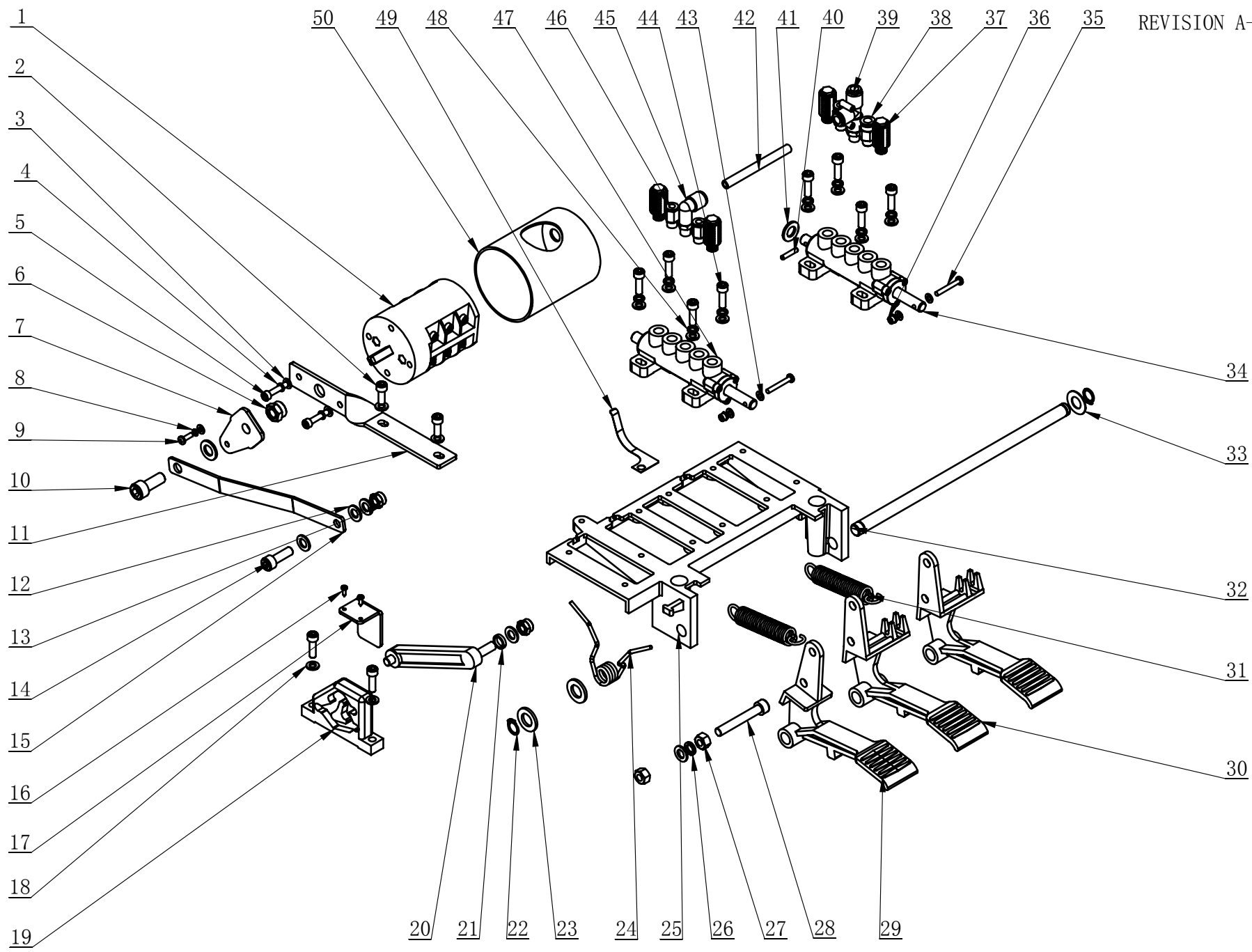




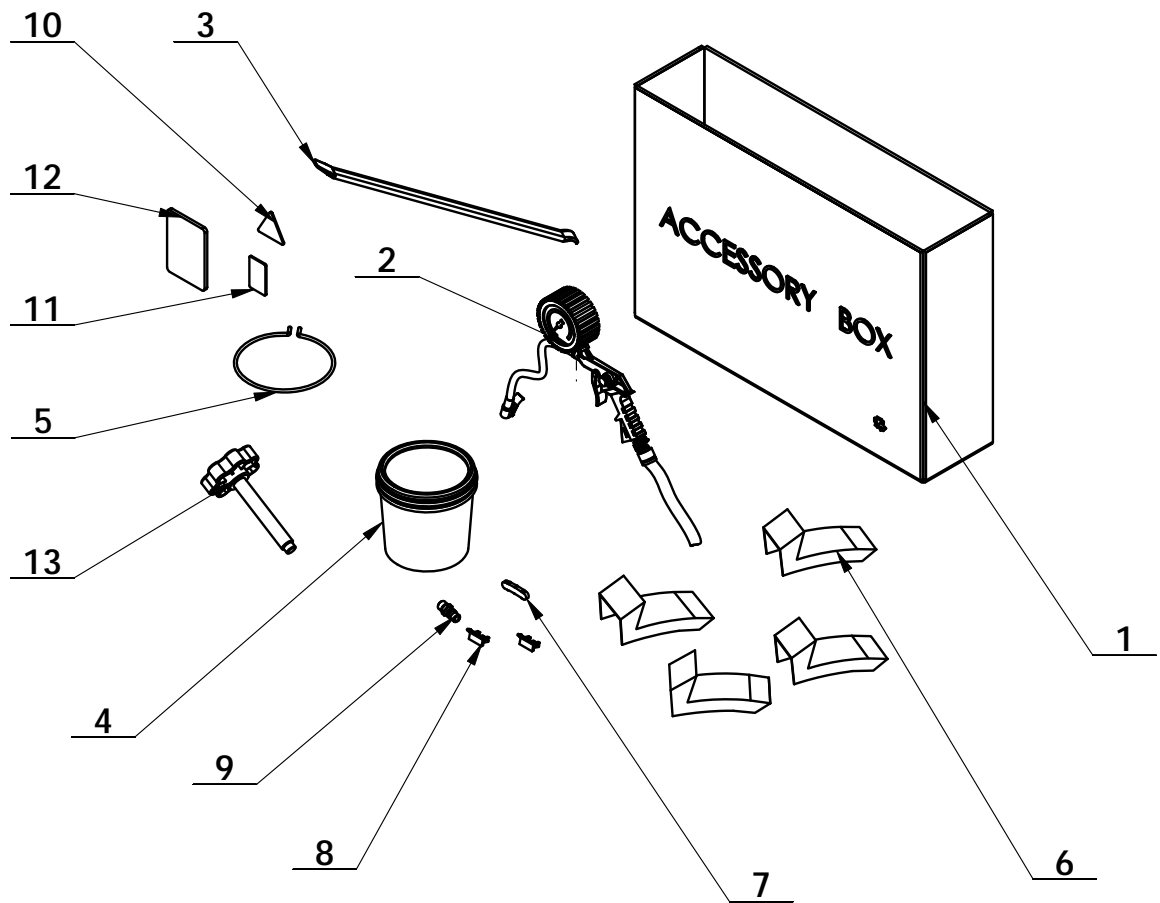
| ITEM | PART. NO                | DESCRIPTION                        | QT. Y |
|------|-------------------------|------------------------------------|-------|
| 1    | CT-LS-1000001           | CYLINDER PISTON ROD                | 1     |
| 2    | CT-LS-1000004           | CYLINDER COVER                     | 1     |
| 3    | CT-LS-1000002           | PISTON                             | 1     |
| 4    | CT-LS-1000003           | CYLINDER BODY                      | 1     |
| 5    | GB6171- M18×1.5         | NUT THIN TOOTH                     | 1     |
| 6    | GB/T 6177.1-M6          | HEXA FLANGE NUT                    | 12    |
| 7    | GB95-6                  | FLAT WASHER                        | 12    |
| 8    | GB70.1-M6×20            | INNER HEXA<br>CYLINDRICAL SCREW    | 12    |
| 9    | GB893.2-30              | ELASTIC RETAINING<br>RING B-TYPE   | 1     |
| 10   | CT-LS-2100000           | PLASTIC QUICK<br>EXHAUST VALVE     | 1     |
| 11   | CT-LS-2200000           | PLASTIC QUICK<br>EXHAUST VALVE     | 1     |
| 12   | CT-LS-1100000           | CYLINDER SEALING<br>PARTS ASSEMBLY | 1     |
| 12.1 | CT-LS-1000007           | CLAMP RING                         | 2     |
| 12.2 | CT-LS-1000008           | PISTON SUPPORT RING                | 1     |
| 12.3 | CT-Y-0160007            | SEAL-ROD, CYLNDR                   | 1     |
| 12.4 | CT-LS-1000011           | Y-RING                             | 2     |
| 12.5 | GB3452.1-<br>185×3.55-G | O-RING G TYPE                      | 1     |
| 12.6 | CT-LS-1000009           | GUIDER SPACER                      | 1     |

REVISION A-06

CT-D-1100000



| ITEM | PART. No            | DESCRIPTION.                                      | QT. Y |
|------|---------------------|---|-------|
| 1    | CT-D-1100018        | SWITCH  | 1     |
| 2    | GB70.1-M6×16        | INNER HEXA CYLINDRICAL SCREW                      | 2     |
| 3    | GB95-5              | FLAT WASHER                                       | 2     |
| 4    | GB93-5              | STANDARD SPRING WASHER                            | 2     |
| 5    | GB70.1-M5×25        | INNER HEXA CYLINDRICAL SCREW                      | 2     |
| 6    | GB889.1-M10         | 1-TYPE PREVAILING TORQUE TYPE<br>HEXAGON LOCK NUT | 1     |
| 7    | CT-D-1100010        | REVERSE LEVER                                     | 1     |
| 8    | GB93-4              | STANDARD SPRING WASHER                            | 1     |
| 9    | GB818-M4×12-H       | CROSS PANHEAD SCREW                               | 1     |
| 10   | GB70.1-M10×25       | INNER HEXA CYLINDRICAL SCREW                      | 1     |
| 11   | CT-D-1100005        | SWITCH BASE PLATE                                 | 1     |
| 12   | GB95-8              | FLAT WASHER                                       | 5     |
| 13   | GB889.1-M8          | 1-TYPE PREVAILING TORQUE TYPE<br>HEXAGON LOCK NUT | 2     |
| 14   | GB70.1-M8×25        | INNER HEXA CYLINDRICAL SCREW                      | 1     |
| 15   | CT-D-1100006        | SWITCH CONNECTING PLATE                           | 1     |
| 16   | GB845-ST2.9×9.5 H C | CROSS PANHEAD TAPPING SCREW                       | 2     |
| 17   | CT-D-1100011        | CAM BAFFLE PLATE                                  | 1     |
| 18   | GB95-6              | FLAT WASHER                                       | 12    |
| 19   | CT-D-1100009        | CAM   | 1     |
| 20   | CT-D-1100008        | CAM CONNECTING ROD                                | 1     |
| 21   | CT-D-1100016        | SPACER  | 1     |
| 22   | GB894.1-12          | SHAFT ELATIC BIG RETAINING RING A-<br>TYPE        | 2     |
| 23   | GB95-12             | FLAT WASHER                                       | 2     |
| 24   | CT-D-1100012        | TORSION SPRING                                    | 1     |
| 25   | CT-D-1100003        | PEDAL SUPPORT                                     | 1     |
| 26   | GB93-8              | STANDARD SPRING WASHER                            | 1     |
| 27   | GB41-M8             | HEXANGULAR NUT                                    | 2     |
| 28   | GB70.1-M8×55        | INNER HEXA CYLINDRICAL SCREW                      | 1     |
| 29   | CT-D-1100001        | PEDAL   | 1     |
| 30   | CT-D-1100002        | PEDAL   | 2     |
| 31   | CT-D-1100007        | SPRING  | 2     |
| 32   | CT-D-1100004        | BOTTOM SHAFT                                      | 1     |
| 33   | CT-D-1100015        | WASHER  | 1     |
| 34   | CT-D-1110000        | VALVE   | 1     |
| 35   | GB818-M4×30-H       | CROSS PANHEAD SCREW                               | 2     |
| 36   | GB889.1-M4          | 1-TYPE PREVAILING TORQUE TYPE<br>HEXAGON LOCK NUT | 2     |
| 37   | FSK 01              | PLASTIC PARTICLE SILENCER                         | 4     |
| 38   | FPC 8-01            | MALE STRAIGHT                                     | 2     |
| 39   | FPD 8-01            | MALE RUN TEE                                      | 1     |
| 40   | GB879.1-4×20        | ELASTIC CYLINDRICAL PIN, HEAVY                    | 1     |
| 41   | GB95-10             | FLAT WASHER                                       | 2     |
| 42   | CT-D-1100017        | HOSE  | 1     |
| 43   | GB95-4              | FLAT WASHER                                       | 5     |
| 44   | GB70.1-M6×20        | INNER HEXA CYLINDRICAL SCREW                      | 10    |
| 45   | FPL 8-01            | INSERT ELBOW Φ8, R1/8                             | 1     |
| 46   | FPC 6-01            | MALE STRAIGHT                                     | 2     |
| 47   | CT-D-1120000        | VALVE   | 1     |
| 48   | GB93-6              | STANDARD SPRING WASHER                            | 8     |
| 49   | CT-D-1100013        | SPRING PLATE                                      | 1     |
| 50   | CT-D-1100014        | SWITCH COVER                                      | 1     |



| ITEM | PART. No     | DESCRIPTION.           | QT. Y |
|------|--------------|------------------------|-------|
| 1    | C-01-8000001 | ACCESSORY BOX          | 1     |
| 2    | C-01-1500000 | INFLATING GUN ASSY     | 1     |
| 3    | C-01-1000008 | CROWBAR 20 "           | 1     |
| 4    | C-01-1300000 | GREASE CONTAINER       | 1     |
| 5    | C-01-1000005 | BRACKET                | 1     |
| 6    | C-01-8000002 | CLAMP PROTECTION COVER | 4     |
| 7    | CT-S-8000002 | PLASTIC COVER          | 1     |
| 8    | CT-S-8000001 | SHEATH                 | 2     |
| 9    | C-01-100000D | AIR SUPPLY CONNECTOR   | 1     |
| 10   | C-30-8000002 | PASS CARD              | 1     |
| 11   | C-30-8000003 | GUARANTEE              | 1     |
| 12   | C-14-8000001 | MANUAL INSTRUCTION     | 1     |
| 13   | C-01-1600000 | HANDLE WHEEL           | 1     |