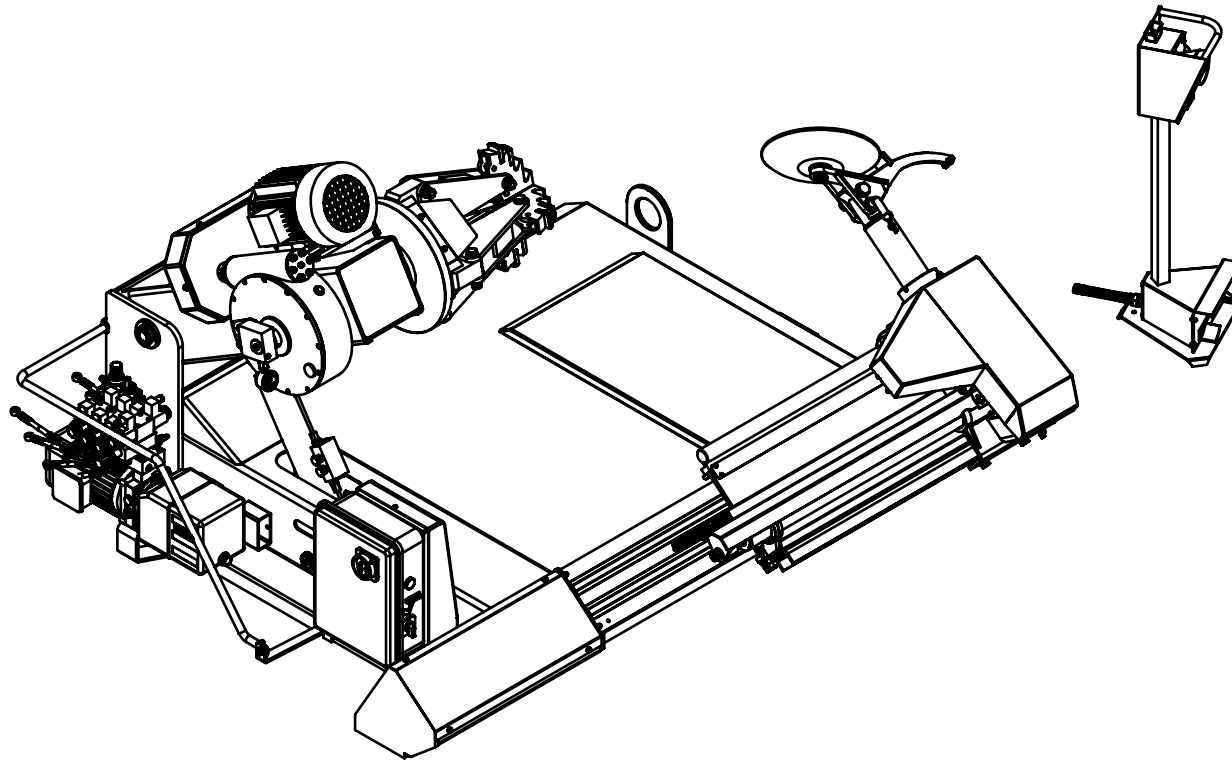
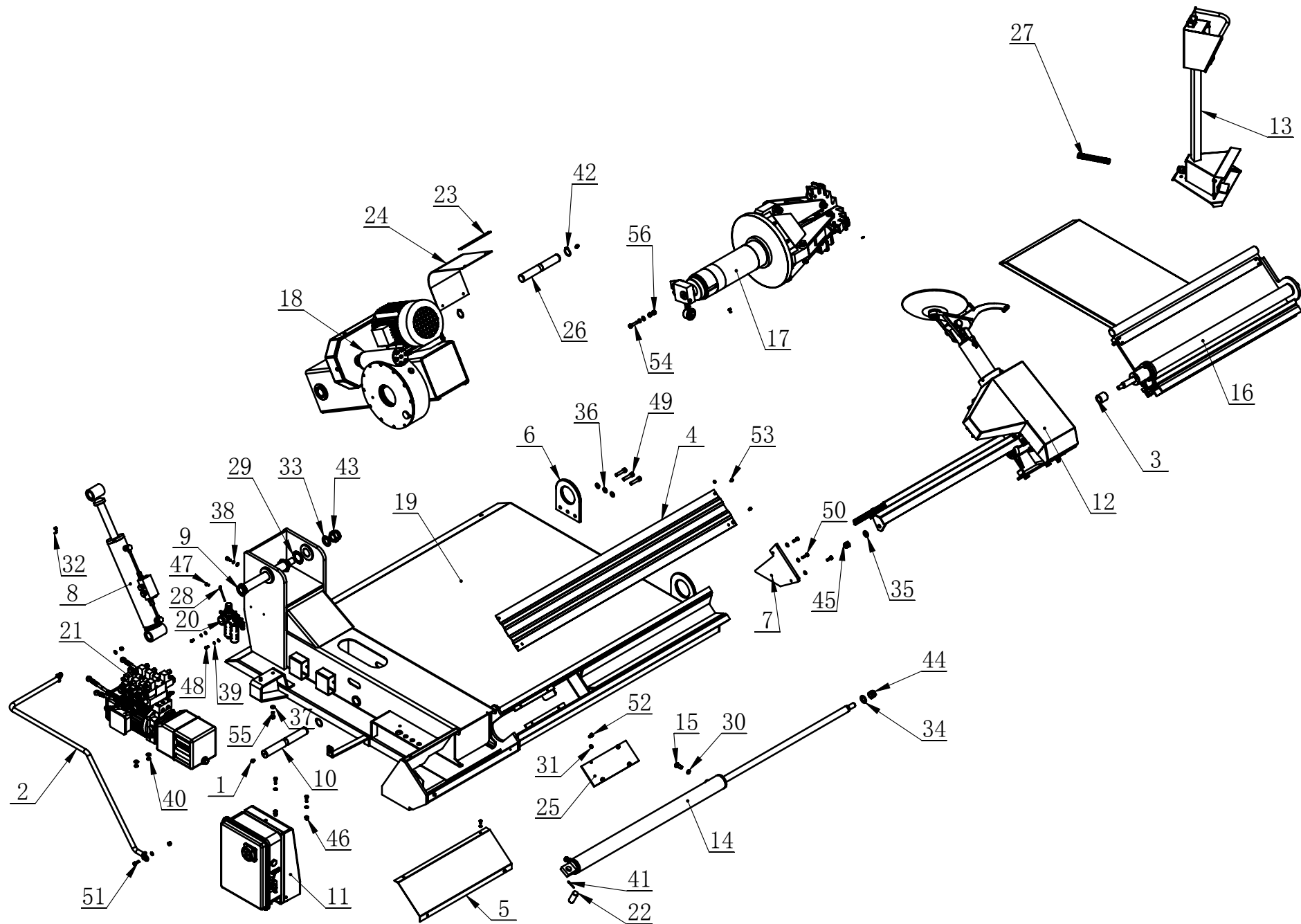


LC590 Exploded Drawing



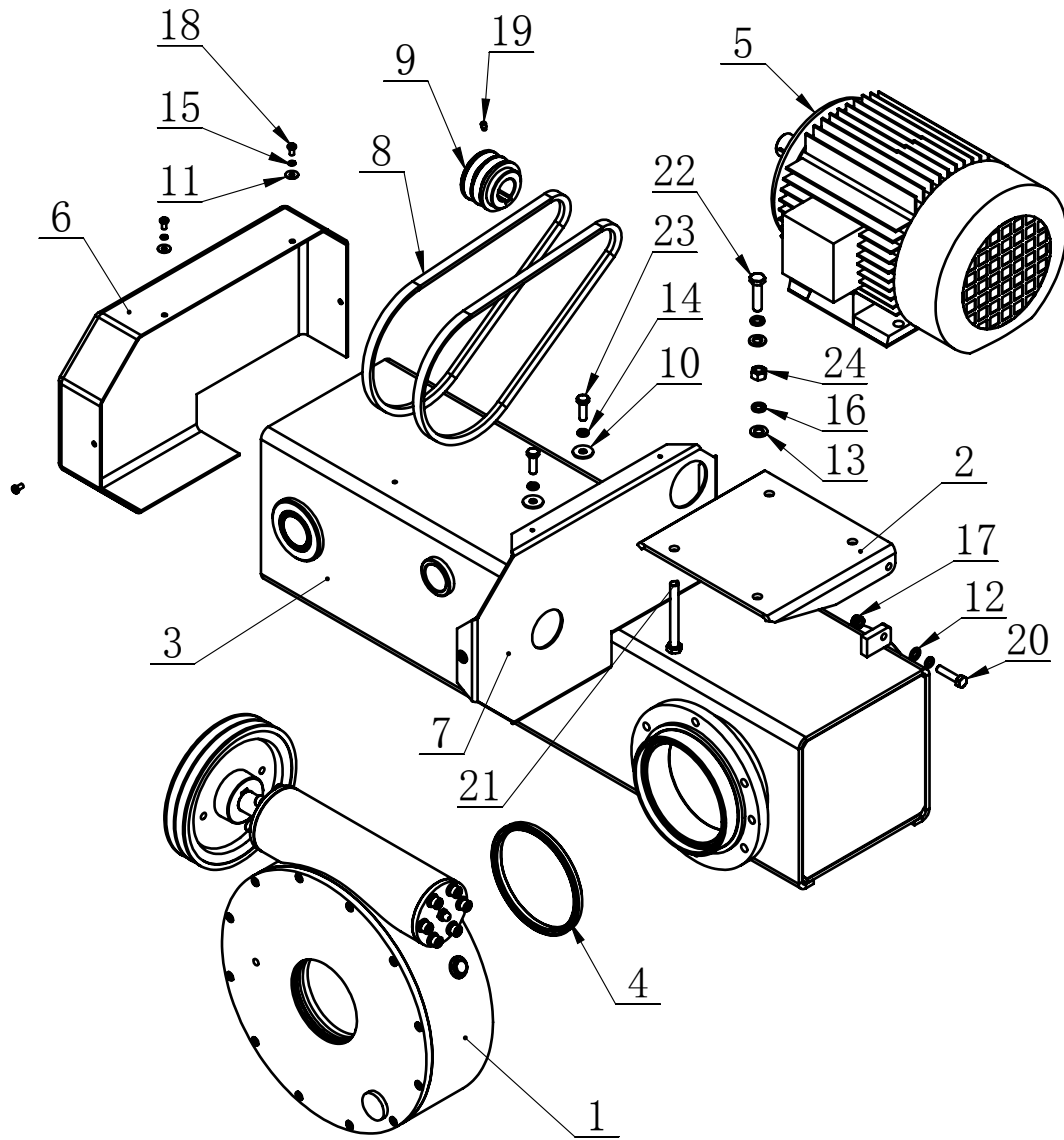
September 8, 2019



TC-20-1000000

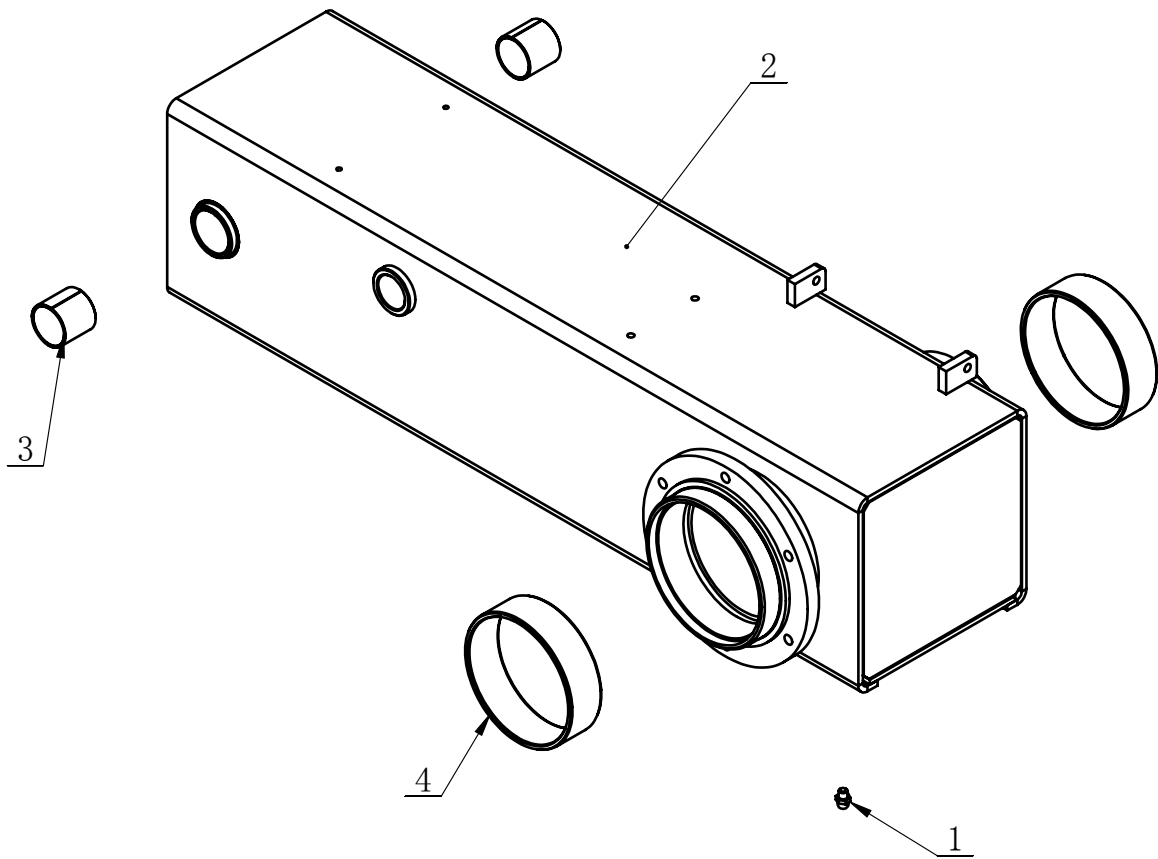
ITEM	PART. No	DESCRIPTION.	QT. Y
1	TC-40-1200023	OIL FILLING NOZZLE	2
2	TC-24-1020000	PROTECTIVE FRAME	1
3	TC-24-1000008	NYLON COVER	1
4	TC-24-1000007	PROTECTIVE FRAME C	1
5	TC-24-1000006	PROTECTION FRAME B	1
6	TC-24-1000005	LIFTING RING	2
7	TC-24-1000004	PLATE	1
8	TC-21-1600000	VERTICAL MOVEMENT OIL TANK ASSEMBLY	1
9	TC-21-1010000	LIFT ARM ROTATION SHAFT	1
10	TC-21-1000001	OIL TANK HANGING SHAFT	1
11	TC-20-1900000	ELECTRICAL CABINET AND PNEUMATIC	1
12	TC-20-1800000	TOOL ARM	1
13	TC-20-1700000	CONSOLE	1
14	TC-20-1500000	TRAILER OIL TANK ASSEMBLY	1
15	TC-20-1400006	JOINT	2
16	TC-20-1400000	TRAILER ASSEMBLY	1
17	TC-20-1300000	MAINSHAFT OIL TANK AND CLAMPING PART	1
18	TC-20-1200000	LIFT ARM AND GEARBOX ASSEMBLY	1
19	TC-20-1100000	BODY	1
20	TC-20-1050000	OIL WATER SEPARATOR-AJ	1
21	TC-20-1030000	HYDRAULIC ASSEMBLY	1
22	TC-20-1000014	FIX PIN SHAFT	1
23	TC-20-1000010	PRESS PLATE	2
24	TC-20-1000009	RUBBER PLATE	1
25	TC-20-1000005	PLATE	1
26	TC-20-1000003	OIL TANK HANGING SHAFT	1
27	TC-20-1000002	CABLE PROTECT SPRING	1
28	TC-10-1000028	GROUND CONNECTION	1
29	TC-10-1000004	WEAR PAD 2	2

ITEM	PART. No	DESCRIPTION.	QT. Y
30	JB982-14	SEALING COMPOUND	4
31	GB95-8	FLAT WASHER	15
32	GB95-6	FLAT WASHER	16
33	GB95-27	FLAT WASHER	1
34	GB95-20	FLAT WASHER	1
35	GB95-16	FLAT WASHER	1
36	GB95-12	FLAT WASHER	6
37	GB95-10	FLAT WASHER	5
38	GB93-8	STANDARD SPRING WASHER	1
39	GB93-6	STANDARD SPRING WASHER	2
40	GB93-10	STANDARD SPRING WASHER	3
41	GB91-3. 2×32	SLOTTED PIN	2
42	GB894. 1-35	SHAFT ELATIC BIG RETAINING RING A-TYPE	4
43	GB889. 2-M27×2	1-TYPEPREVAILING TORQUE TYPE HEXAGON LOCK NUT, SMALL TOOTH	1
44	GB889. 2-M20×1.5	1-TYPEPREVAILING TORQUE TYPE HEXAGON LOCK NUT	1
45	GB889. 2-M16×1.5	1-TYPEPREVAILING TORQUE TYPE HEXAGON LOCK NUT	1
46	GB889. 1-M8	LOCKNUT M8	4
47	GB818-M6×16-H	CROSS PANHEAD SCREW	1
48	GB70. 1-M6×10	INNER HEXA CYLINDRICAL SCREW	2
49	GB70. 1-2000 M12×50	INNER HEXA CYLINDRICAL SCREW	6
50	GB5783-M8×30	HEXANGULAR BOLT	1
51	GB5783-M8×25	HEXANGULAR BOLT	5
52	GB5783-M8×20	HEXANGULAR BOLT	5
53	GB5783-M6×12	HEXANGULAR BOLT	12
54	GB5783-M10×40	HEXANGULAR BOLT	1
55	GB5781-M10×25	HEXANGULAR BOLT	2
56	GB41-M10	HEXANGULAR NUT	2

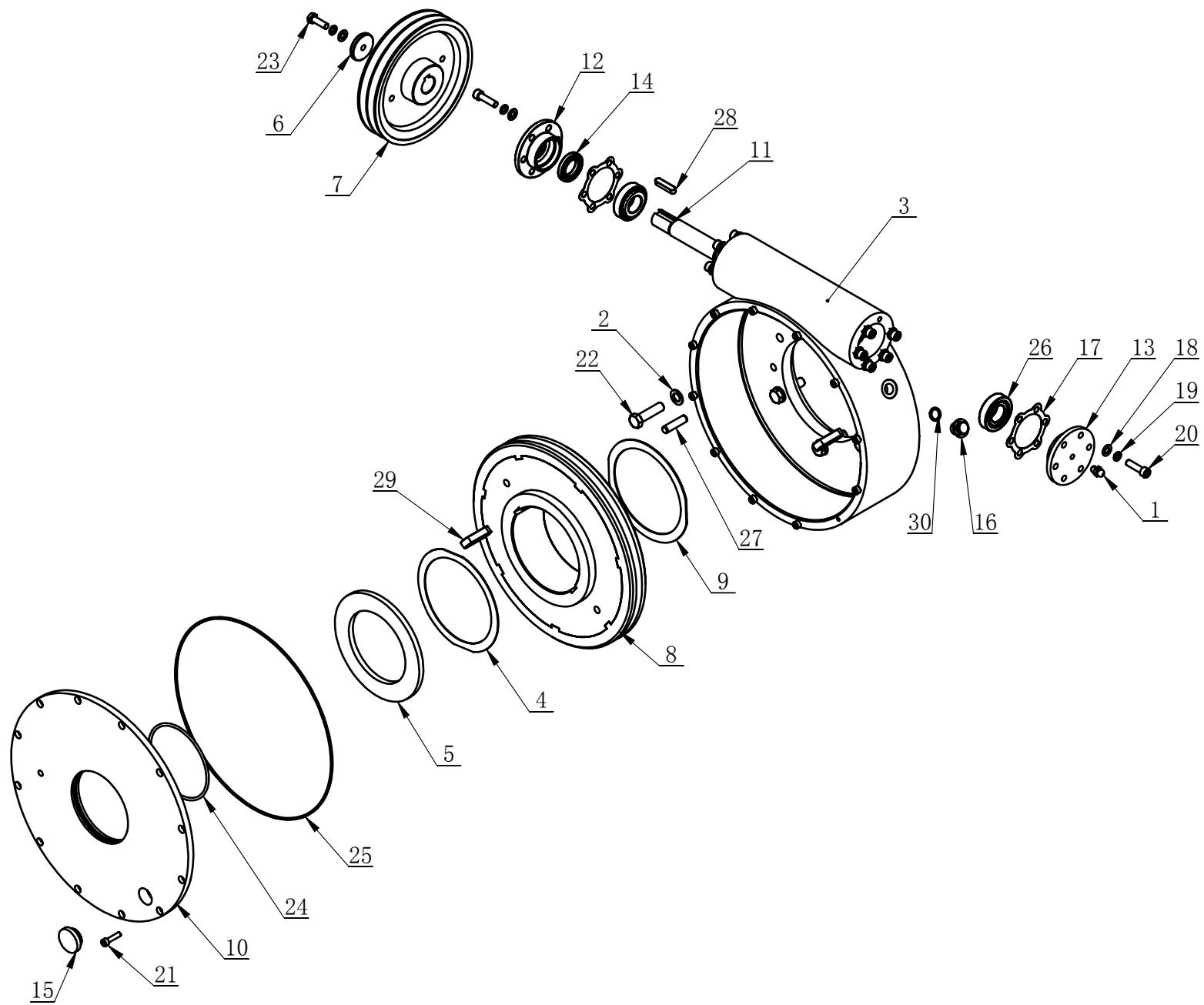


ITEM	PART. No	DESCRIPTION.	QT. Y
1	TC-24-1230000	GEARBOX	1
2	TC-24-1220000	MOTOR BASE	1
3	TC-24-1210000	LIFTG ARM ASSEMBLY	1
4	TC-20-1200006	U SEALING RING UNP/3325-130*145*9	1
5	TC-20-1200005	MOTOR (380/50HZ/3PH)	1
6	TC-20-1200004	BELT COVER	1
7	TC-20-1200003	THE MOTOR END COVER	1
8	TC-20-1200002	V-BELT -A850	2
9	TC-20-1200001	SMALL PULLEY	1
10	GB96. 1-8	LARGE WASHER A GRADE	2
11	GB96. 1-5	LARGE WASHER A GRADE	4
12	GB95-8	FLAT WASHER	2
13	GB95-10	FLAT WASHER	4
14	GB93-8	STANDARD SPRING WASHER	4
15	GB93-5	STANDARD SPRING WASHER	4
16	GB93-10	STANDARD SPRING WASHER	4
17	GB889. 1-M8	LOCKNUT M8	2
18	GB818-M5×10-H	CROSS PANHEAD SCREW	4
19	GB79-M6×10	INNER HEXA CYLINDRICAL TERMINUS SET SCREW	1
20	GB5783-M8×35	HEXANGULAR BOLT	2
21	GB5783-M10×90	HEXANGULAR BOLT	1
22	GB5783-M10×40	HEXANGULAR BOLT	3
23	GB5783- M8×25	HEXANGULAR BOLT	2
24	GB41-M10	HEXANGULAR NUT	1

TC-24-1210000

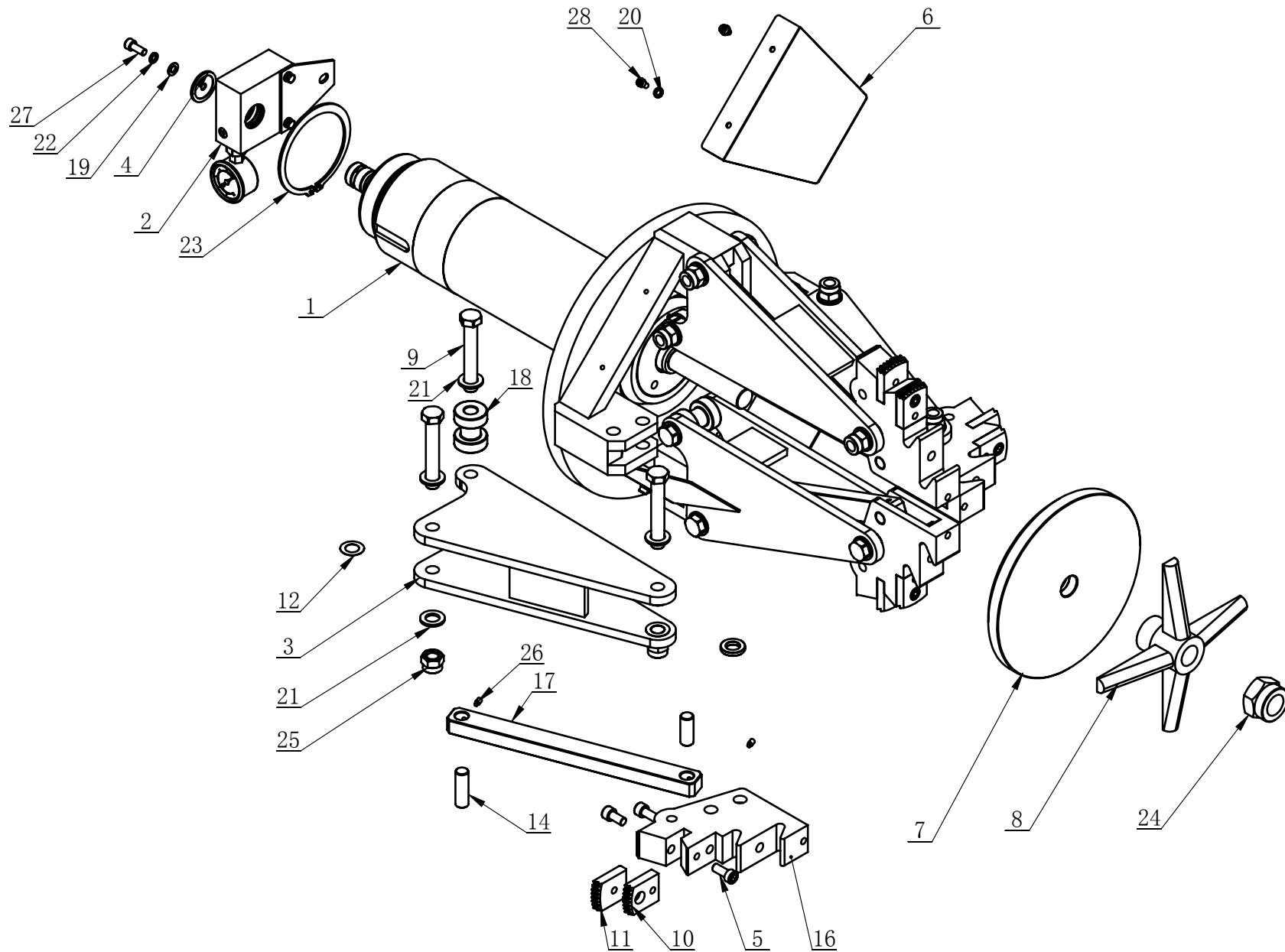


ITEM	PART. No	DESCRIPTION.	QT. Y
1	TC-40-1200023	OIL FILLING NOZZLE	1
2	TC-24-1211000	LIFT ARM WELD	1
3	TC-21-1230001	COPPER BUSHING	2
4	TC-20-1210004	LARGE COPPER BUSHING	2

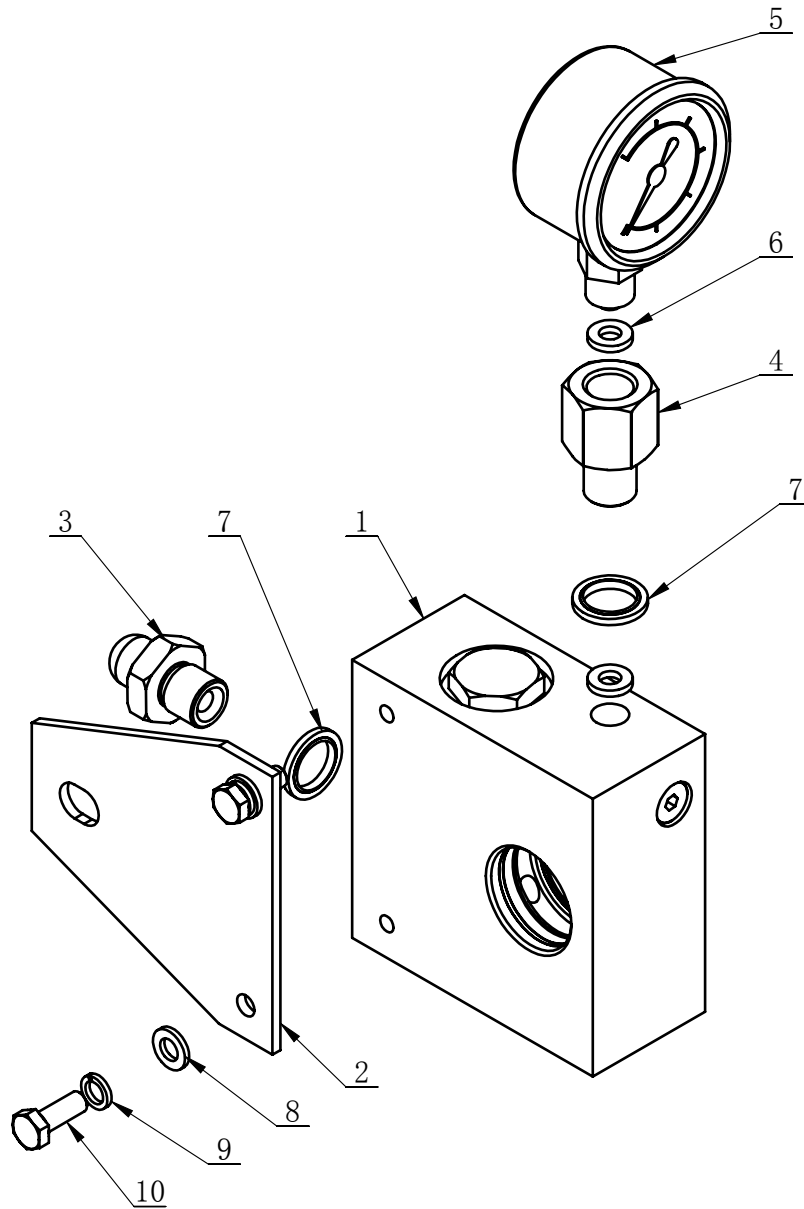


TC-24-1230000

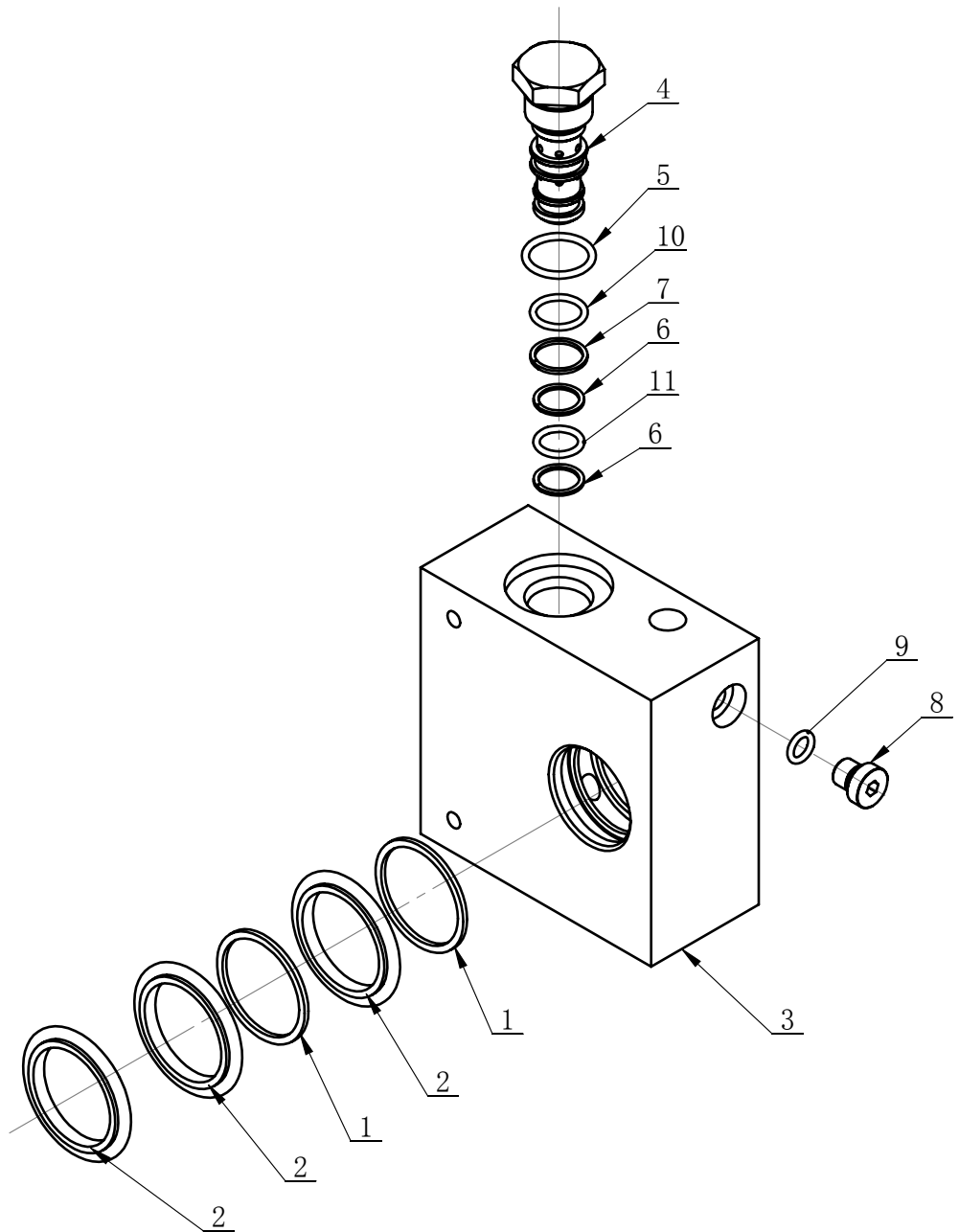
ITEM	PART. No	DESCRIPTION.	QT. Y
1	TC-40-1200023	OIL FILLING NOZZLE	1
2	TC-24-1230014	COPPER PAD	6
3	TC-24-1230001	GEARBOX	1
4	TC-20-1230013	PAD	1
5	TC-20-1230012	PAD	1
6	TC-20-1230010	RETAINNING RING	1
7	TC-20-1230009	LARGE PULLEY	1
8	TC-20-1230007	WORM	1
9	TC-20-1230006	PAD	1
10	TC-20-1230005	GEARBOX REAR COVER	1
11	TC-20-1230004	WORM ROD	1
12	TC-20-1230003	GEARBOX FRONT COVER	1
13	TC-20-1230002	GEARBOX REAR COVER	1
14	TC-10-1400015	SEALING WASHER W42X25X7	1
15	TC-10-1400014	OIL DISPLAY M27X1.5	1
16	TC-10-1400013	BOLT	1
17	TC-10-1400008	PAPER WASHER	2
18	GB95-8	FLAT WASHER	13
19	GB93-8	STANDARD SPRING WASHER	13
20	GB70.1-M8×30	INNER HEXA CYLINDRICAL SCREW	12
21	GB70.1-M6×25	INNER HEXA CYLINDRICAL SCREW	12
22	GB5783-M12×45	HEXANGULAR BOLT	6
23	GB5783-M8×25	HEXANGULAR BOLT	1
24	GB3452.1-109×3.55-G	HYDRAULIC-PNEUMATIC RUBBER O-RING G TYPE	1
25	GB3452.1 300x2.65	RING	1
26	GB297-30205	CYLINDRICAL BALL BEARING	2
27	GB119.1-10×40	CYLINDRICAL PIN	2
28	GB1096-8×7×36	COMMON FLAT KEY	1
29	GB1096-16×10×50	COMMON FLAT KEY	2
30	GB - 13.2×2.65-G	O-RING G 13.2×2.65-G	1



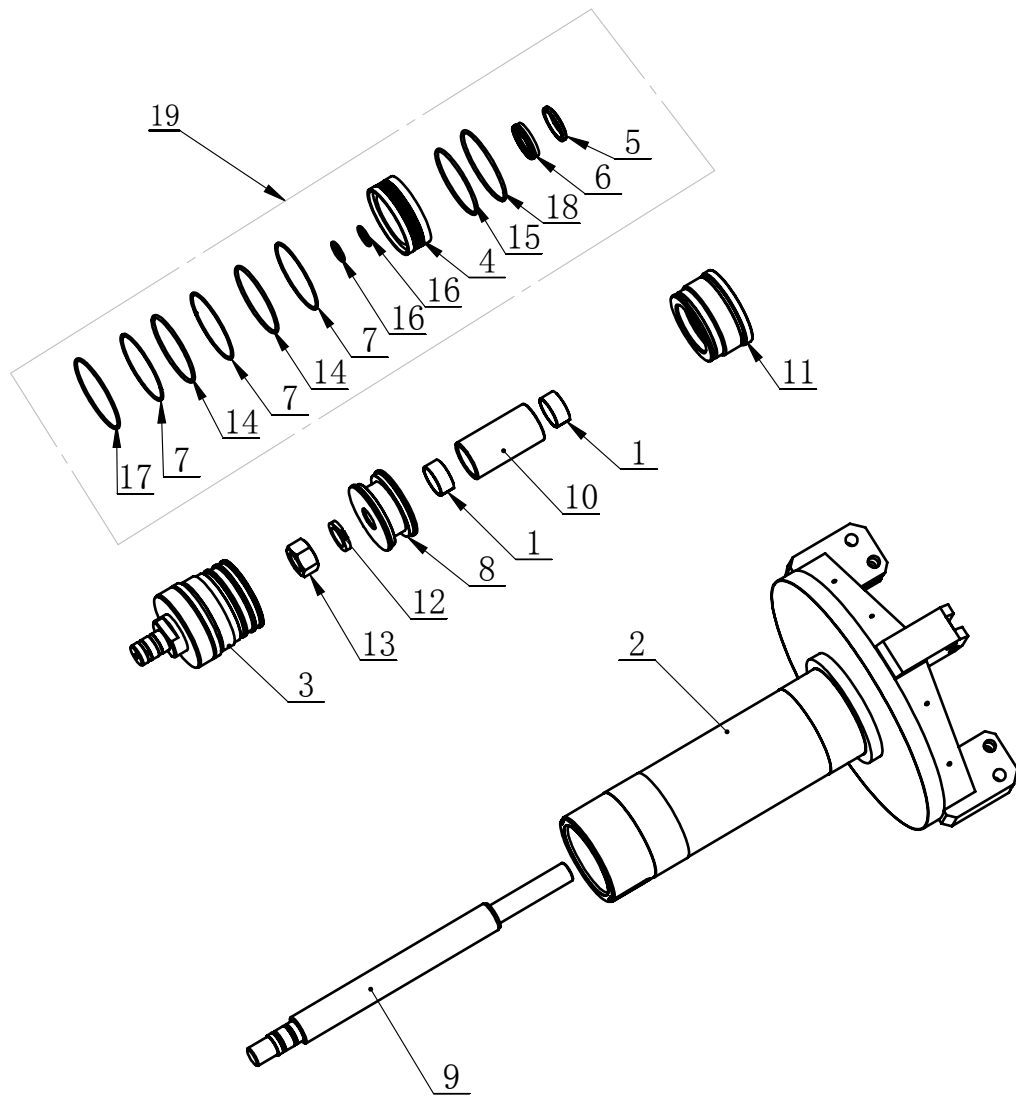
ITEM	PART. No	DESCRIPTION.	QT. Y
1	TC-20-1340000	MAINSHAFT OIL TANK	1
2	TC-20-1330000	OIL UNION ASSEMBLY PARTS	1
3	TC-20-1320000	CLAMPING JAW SUPPORT	4
4	TC-20-1300016	PRESS COVER	1
5	TC-20-1300015	INNER HEXA CYLINDRICAL SCREW	4
6	TC-20-1300013	PROTECTIVE FRAME	4
7	TC-20-1300012	PLATE	1
8	TC-20-1300011	BRACKET	1
9	TC-20-1300010	CLAMPING JAW PIN	12
10	TC-20-1300009	QUICK CHANGE CLAMPING JAW	4
11	TC-20-1300008	CLAMPING JAW	4
12	TC-20-1300007	ADJUSTING WASHER	24
13	TC-20-1300006	COVER	8
14	TC-20-1300005	PIN SHAFT	4
15	TC-20-1300004	PIN SHAFT	4
16	TC-20-1300003	CLAMPING JAW	4
17	TC-20-1300002	PLATE	4
18	TC-20-1300001	CYLINDER	4
19	GB95-8	FLAT WASHER	1
20	GB95-6	FLAT WASHER	8
21	GB95-16	FLAT WASHER	24
22	GB93-8	STANDARD SPRING WASHER	1
23	GB894. 1-110	SHAFT ELATIC BIG RETAINING RING A-TYPE	1
24	GB889. 2-M27×2	1-TYPEPREVAILING TORQUE TYPE HEXAGON LOCK NUT, SMALL TOOTH	1
25	GB889. 1-M16	1-TYPE PREVAILING TORQUE TYPE HEXAGON LOCK NUT	12
26	GB79-M6×12	INNER HEXA CYLINDRICAL TERMINUS SET SCREW	8
27	GB70. 1-M8×20	INNER HEXA CYLINDRICAL SCREW	1
28	GB70. 1-M6×10	INNER HEXA CYLINDRICAL SCREW	8
29	GB70. 1-M10×30	INNER HEXA CYLINDRICAL SCREW	4
30	GB70. 1-M10×20	INNER HEXA CYLINDRICAL SCREW	4



ITEM	PART. No	DESCRIPTION.	QT. Y
1	TC-20-1331000	OIL GUIDE ASSEMBLY	1
2	TC-20-1330003	FIX PLATE	1
3	TC-20-1330002	SCREW	2
4	TC-20-1330001	PRESSURE GAUGE JOINT	1
5	TC-10-1620007	PRESSURE GAUGE	1
6	TC-10-1620003	AIR REGULATOR WASHER	2
7	JB982-14	SEALING COMPOUND	3
8	GB95-6	FLAT WASHER	2
9	GB93-6	STANDARD SPRING WASHER	2
10	GB5783-M6×16	HEXANGULAR BOLT	2

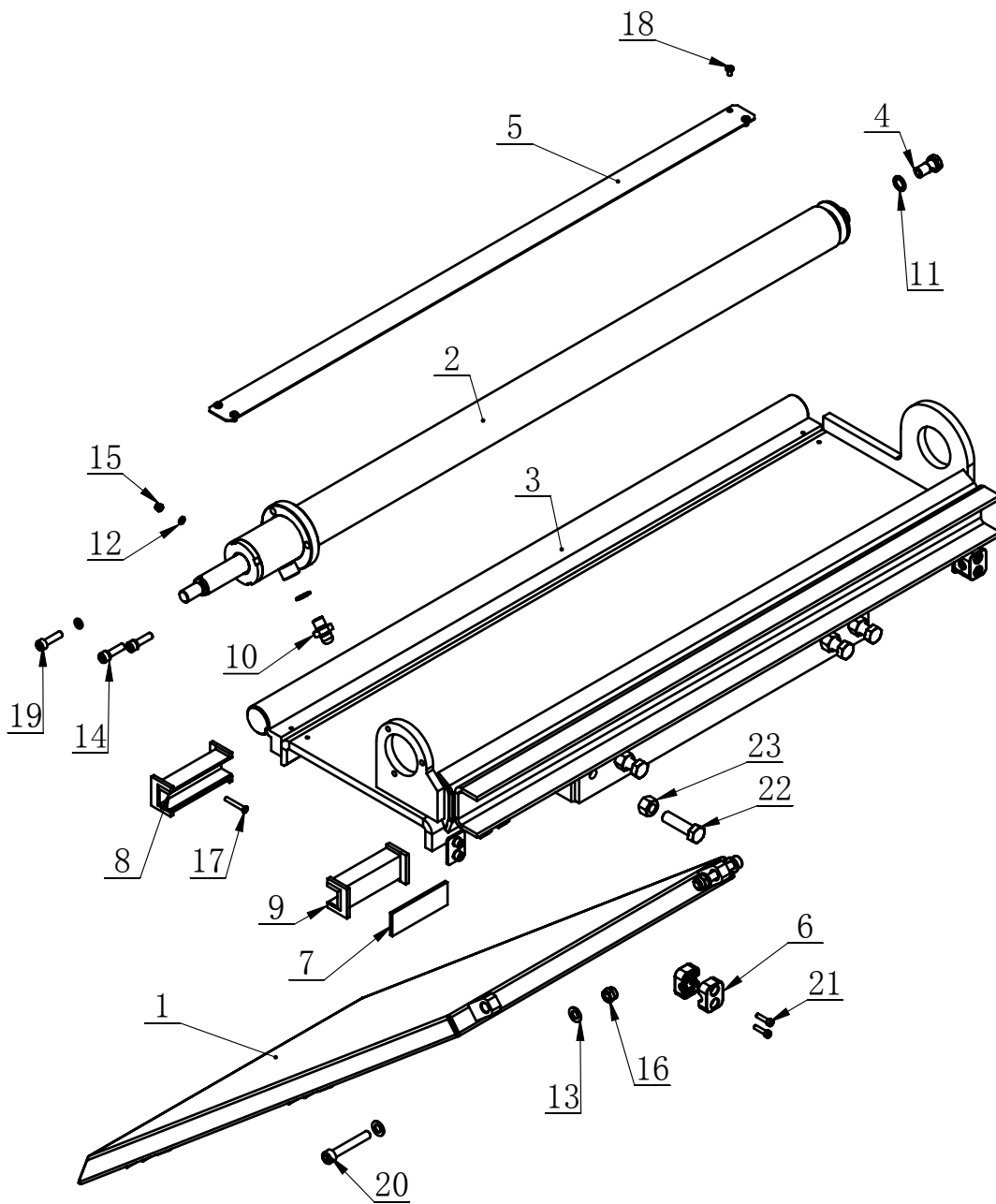


ITEM	PART. No	DESCRIPTION.	QT. Y
1	TC-20-1331003	BEAD FLANGE	2
2	TC-20-1331002	RING GRS0300	3
3	TC-20-1331001	OIL GUIDER VALVE BODY	1
4	TC-10-1621100	HYDRAULIC CONTROL NON RETURN VALVE	1
5	TC-10-1621011	MAIN SHAFT O-RING	1
6	TC-10-1621010	CIRCLIP	2
7	TC-10-1621009	CIRCLIP	1
8	TC-10-1621008	OIL PLUG	1
9	GB3452. 1-6. 3×1. 8-G	HYDRAULIC-PNEUMATIC RUBBER O-RING G TYPE	1
10	GB3452. 1-12. 5×1. 8-G	HYDRAULIC-PNEUMATIC RUBBER O-RING G TYPE	1
11	GB3452. 1-10. 6×1. 8-G	HYDRAULIC-PNEUMATIC RUBBER O-RING G TYPE	1



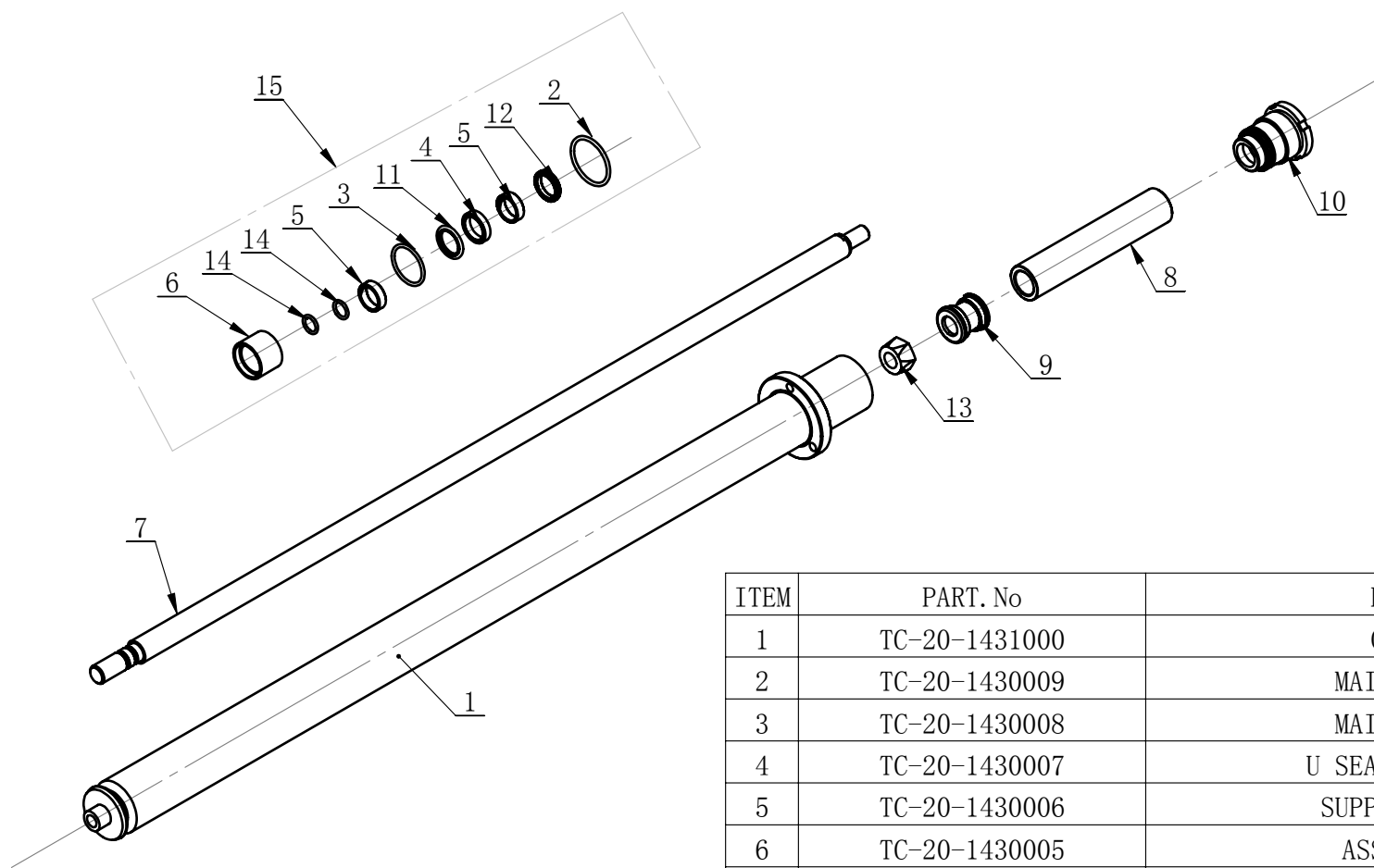
ITEM	PART. No	DESCRIPTION.	QT. Y
1	TC-21-1210001	SELF LUBRICATION BEARING	2
2	TC-20-1311000	CLAMPING ASSEMBLY	1
3	TC-20-1310010	OIL TANK HEAD	1
4	TC-20-1310009	COMPOUND RING TW10000075	1
5	TC-20-1310008	DUST PROOF RING DHS40	1
6	TC-20-1310007	U-RING UNP40X50X10	1
7	TC-20-1310006	RETAINING RING	3
8	TC-20-1310004	PISTON	1
9	TC-20-1310003	PISTON ROD	1
10	TC-20-1310002	SEPERATOR	1
11	TC-20-1310001	OIL TANK HEAD	1
12	GB93-27	STANDARD SPRING WASHER	1
13	GB6171-M27×2	1-TYPE HEXA NUT	1
14	GB3452.1-95×3.55-G	HYDRAULIC-PNEUMATIC RUBBER O-RING G TYPE	2
15	GB3452.1-93×3.55-G	HYDRAULIC-PNEUMATIC RUBBER O-RING G TYPE	1
16	GB3452.1-23.8×3.1-G	HYDRAULIC-PNEUMATIC RUBBER O-RING G TYPE	2
17	GB3452.1-101×3-G	HYDRAULIC-PNEUMATIC RUBBER O-RING G TYPE	1
18	GB3452.1-100×3.55-G	HYDRAULIC-PNEUMATIC RUBBER O-RING G TYPE	1
19	TC-20-1340100	ASSEMBLY SEALING	1

TC-20-1340000

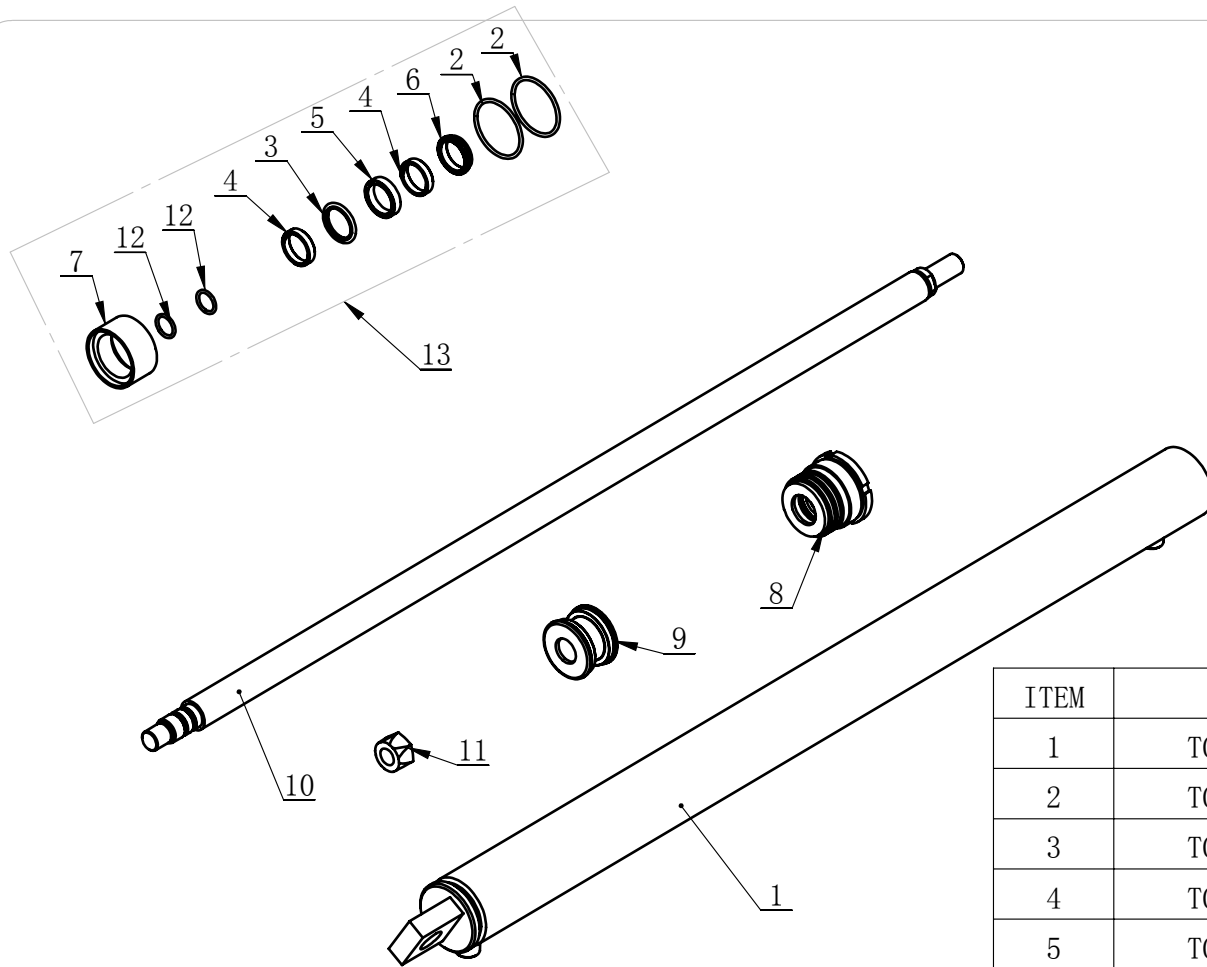


ITEM	PART. No	DESCRIPTION.	QT. Y
1	TC-24-1420000	TRAILER ASSEMBLY	1
2	TC-20-1430000	TRAILER OIL TANK ASSEMBLY	1
3	TC-20-1410000	TRAILER WELDING	1
4	TC-20-1400006	JOINT	1
5	TC-20-1400005	RETAINING PLATE	1
6	TC-20-1400004	CABLE CLIPPING BOX	4
7	TC-20-1400003	PAD	2
8	TC-20-1400001	PLASTIC GUIDE RAIL	2
9	TC-20-1400001	PLASTIC GUIDE RAIL	2
10	TC-20-1330002	SCREW	1
11	JB982-14	SEALING COMPOUND	3
12	GB95-5	FLAT WASHER	2
13	GB95-10	FLAT WASHER	4
14	GB93-8	STANDARD SPRING WASHER	3
15	GB889. 1-M5	1-TYPE PREVAILING TORQUE TYPE HEXAGON LOCK NUT	2
16	GB889. 1-M10	1-TYPE PREVAILING TORQUE TYPE HEXAGON LOCK NUT	2
17	GB819. 1-M5×35-H	CROSS COUNTERSUNK SCREW STEEL 4.8 GRADE	2
18	GB818-M5×8-H	CROSS PANHEAD SCREW	4
19	GB70. 1-M8×30	INNER HEXA CYLINDRICAL SCREW	3
20	GB70. 1-M10×65	INNER HEXA CYLINDRICAL SCREW	2
21	GB70. 1 M5×20	INNER HEXA CYLINDRICAL SCREW	4
22	GB5783-M14×50	HEXANGULAR BOLT	4
23	GB41-M14	HEXANGULAR NUT	4

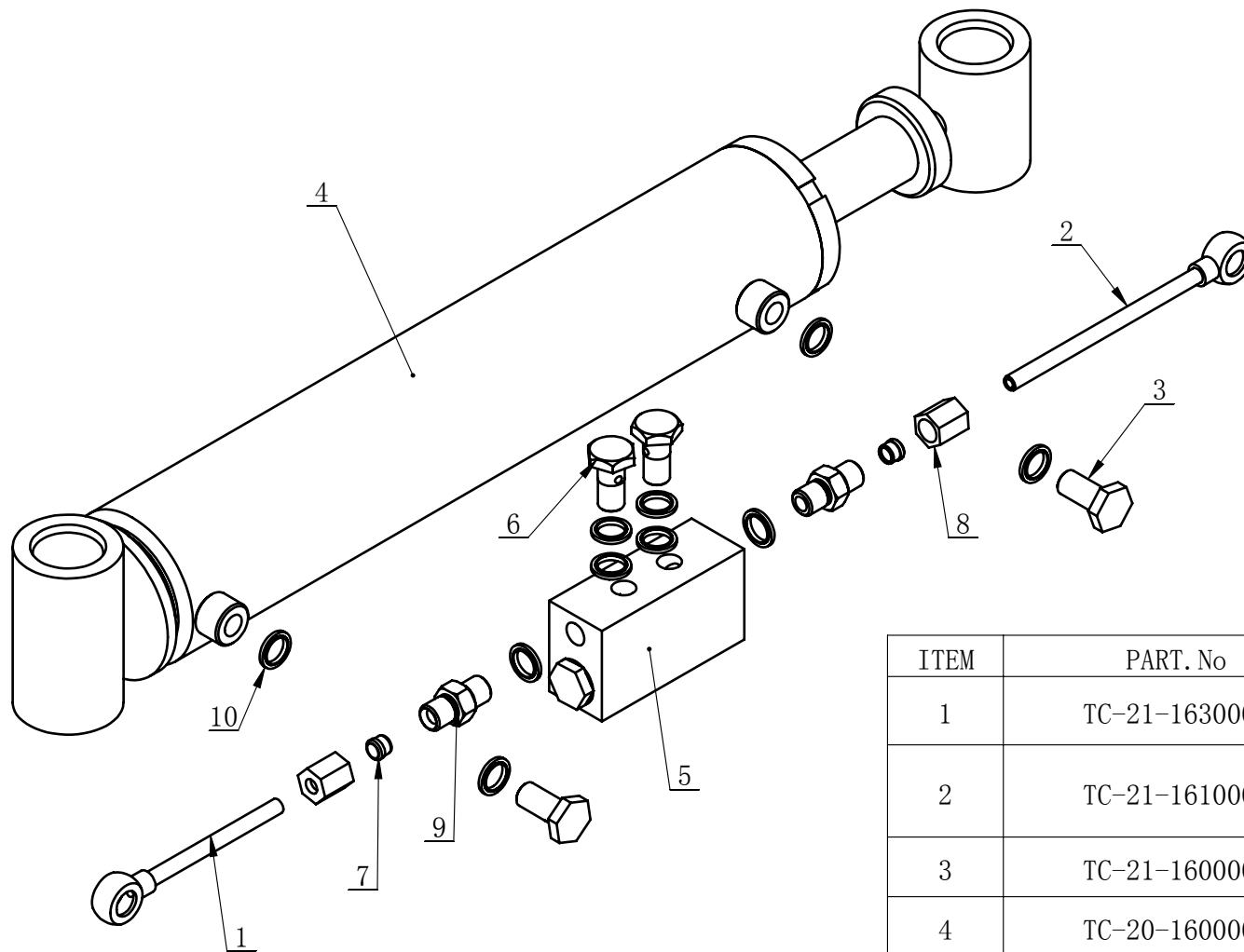
TC-20-1400000



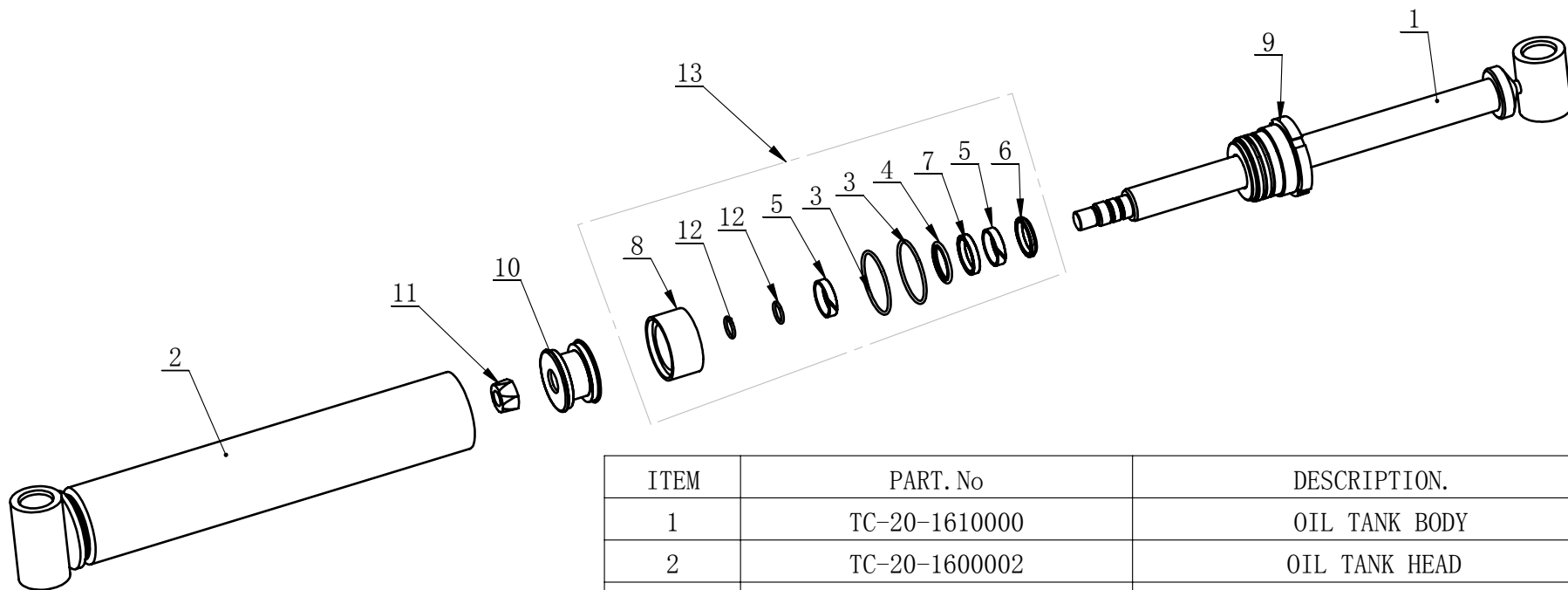
ITEM	PART. No	DESCRIPTION.	QT. Y
1	TC-20-1431000	OIL TANK BODY	1
2	TC-20-1430009	MAIN SHAFT O-RING	1
3	TC-20-1430008	MAIN SHAFT O-RING	1
4	TC-20-1430007	U SEALING RING 25x33x7	1
5	TC-20-1430006	SUPPORT RING GT-9.7	2
6	TC-20-1430005	ASSEMBLY SEALING	1
7	TC-20-1430004	PISTON ROD	1
8	TC-20-1430003	BUSHING	1
9	TC-20-1430002	PISTON	1
10	TC-20-1430001	OIL TANK HEAD	1
11	TC-10-1720007	SEALING RING Φ 25 (GSJ0250)	1
12	TC-10-1720004	DUST-PROOF LBH-25	1
13	GB6185. 2-M20 \times 1.5	2-TYPE METAL HEXAGON LOCK NUT, SMALL TOOTH	1
14	GB3452. 1-15. 5 \times 2. 65-G	HYDRAULIC-PNEUMATIC RUBBER O-RING G TYPE	2
15	TC-20-1432000	ASSEMBLY SEALING	1



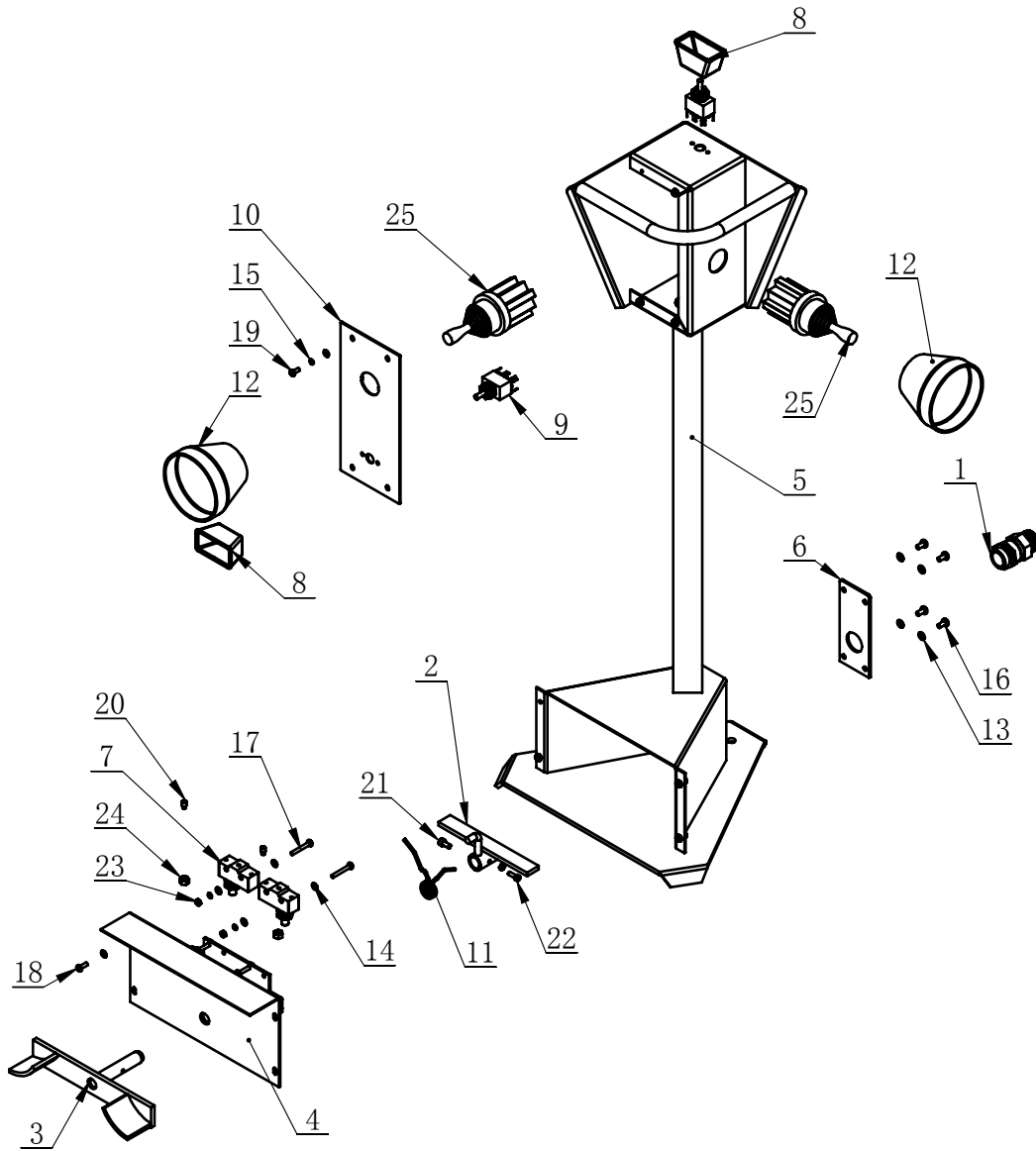
ITEM	PART. No	DESCRIPTION.	QT. Y
1	TC-20-1510000	OIL TANK BODY	1
2	TC-20-1500009	MAIN SHAFT O-RING	2
3	TC-20-1500008	SEALING RING GSJ0300	1
4	TC-20-1500007	SUPPORT RING GT-8.1B	2
5	TC-20-1500006	U SEALING RING	1
6	TC-20-1500005	DUST-PROOF RING DHS-30	1
7	TC-20-1500004	ASSEMBLY SEALING	1
8	TC-20-1500003	OIL TANK HEAD	1
9	TC-20-1500002	PISTON	1
10	TC-20-1500001	PISTON ROD	1
11	GB6185. 2-M20×1. 5	2-TYPE METAL HEXAGON LOCK NUT, SMALL TOOTH	1
12	GB3452. 1-19×2. 65-G	HYDRAULIC-PNEUMATIC RUBBER O-RING G TYPE	2
13	TC-20-1520000	ASSEMBLY SEALING	1



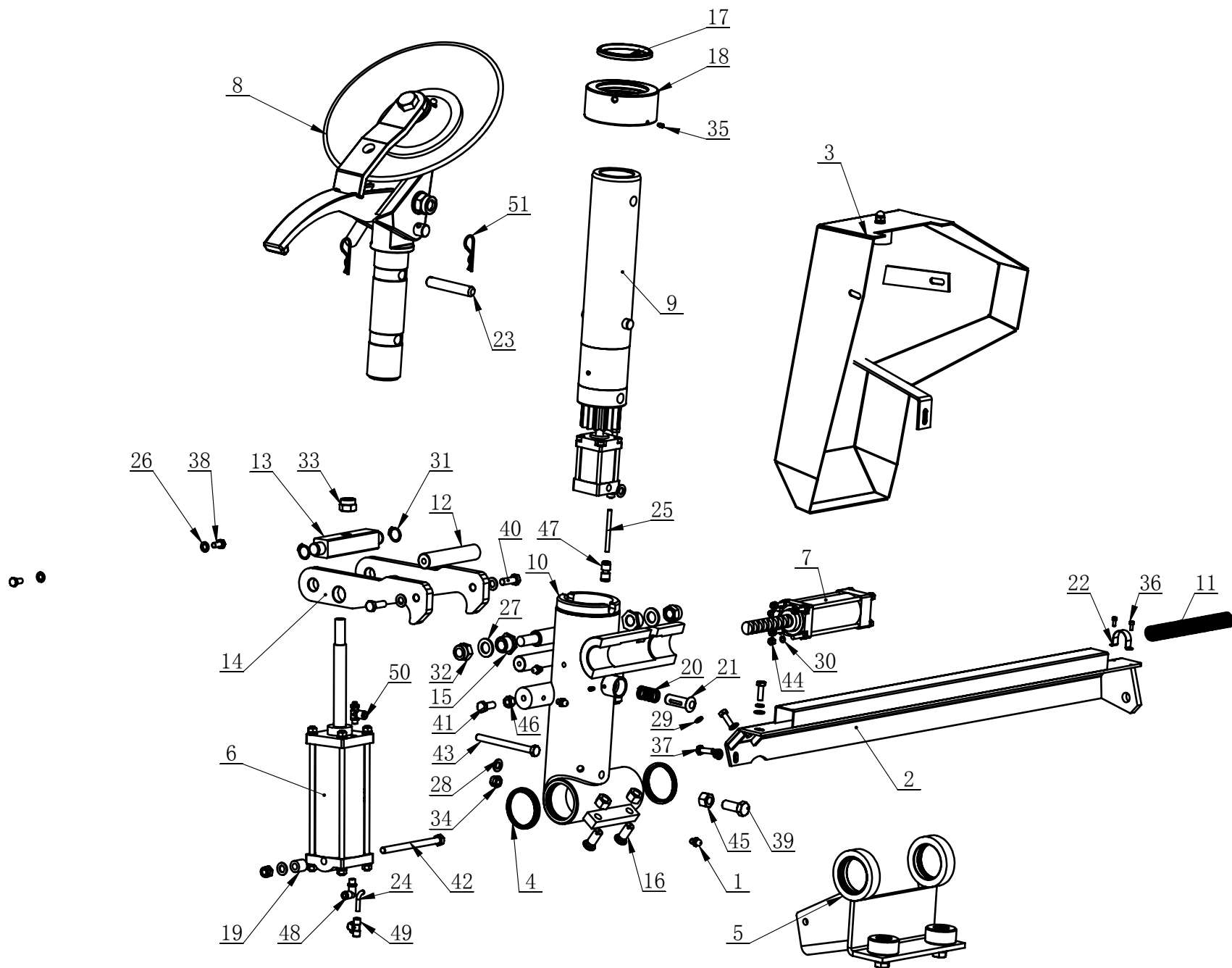
ITEM	PART.No	DESCRIPTION.	QT. Y
1	TC-21-1630000	OIL PIPE JOINT NOZZAL ASSEMBLY WELDING	1
2	TC-21-1610000	OIL PIPE JOINT NOZZAL ASSEMBLY WELDING	1
3	TC-21-1600001	NOZZAL	2
4	TC-20-1600000	LIFT OIL TANK ASSEMBLY	1
5	TC-10-1700003	HYDRAULIC LOCK	1
6	TC-10-1700002	OIL TUBE CONNECTOR	2
7	TC-10-1620006	CLAMP BUSHING	2
8	TC-10-1620002	NUT-LOCK	2
9	TC-10-1620001	OIL PIPE DOUBLESREW ROD	2
10	JB982-14	SEALING COMPOUND	10



ITEM	PART. No	DESCRIPTION.	QT. Y
1	TC-20-1610000	OIL TANK BODY	1
2	TC-20-1600002	OIL TANK HEAD	1
3	TC-20-1620000	PISTON ROD ASEMBLY WELDING PART	1
4	TC-20-1600001	PISTON	1
5	GB6185. 2-M20×1. 5	2-TYPE METAL HEXAGON LOCK NUT, SMALL TOOTH	1
6	TC-20-1600003	ASSEMBLY SEALING TW-7000050	1
7	GB3452. 1-19×2. 65-G	HYDRAULIC-PNEUMATIC RUBBER O-RING G TYPE	2
8	TC-20-1600005	DUST-PROOF RING DHS-35	1
9	TC-20-1600007	SEALING RING (GSJ0350)	1
10	TC-20-1600008	MAIN SHAFT O-RING	2
11	TC-20-1600004	U SEALING RING	1
12	TC-20-1600006	SUPPORT RING GT-9. 7B	2
13	TC-20-1630000	ASSEMBLY SEALING	1



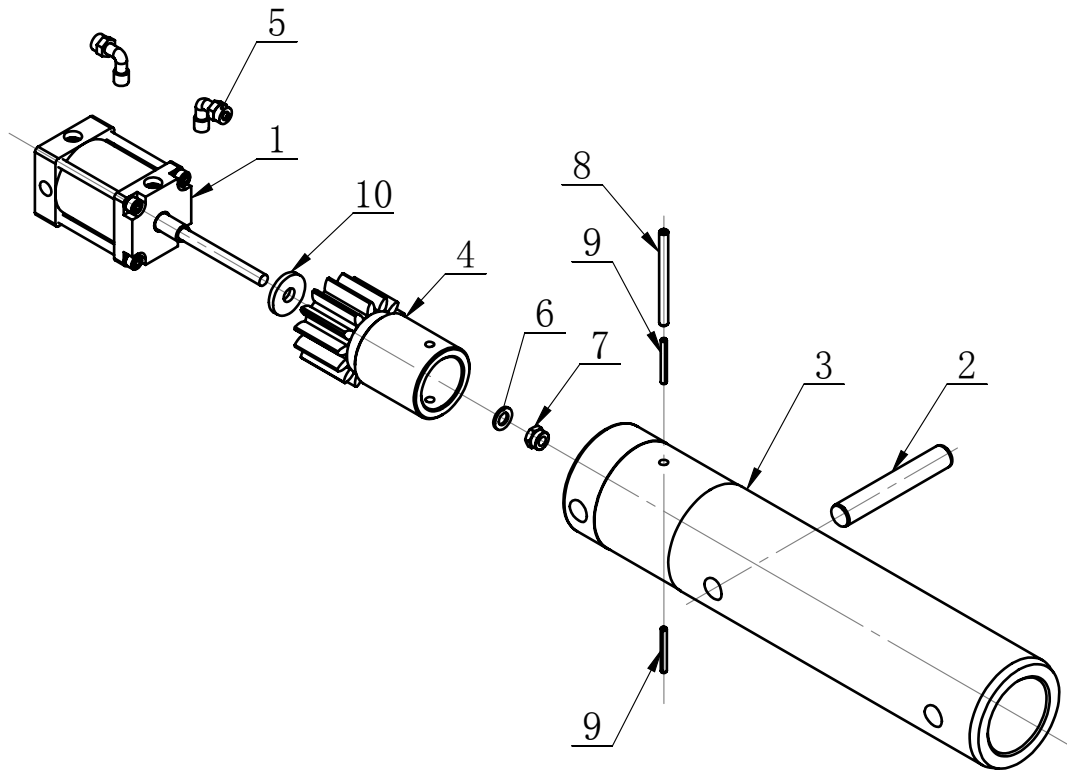
ITEM	PART. No	DESCRIPTION.	QT. Y
1	TC-E-7700125	CABLE LOCK ASSEMBLY	1
2	TC-20-1740000	BUSHING	1
3	TC-20-1730000	DIRECTION CHANGING SHAFT WELD	1
4	TC-20-1720000	BRACKET	1
5	TC-20-1710000	CONSOLE	1
6	TC-20-1700009	PLATE	1
7	TC-20-1700005	MICROSWITCH YBLXW	2
8	TC-20-1700004	SWITCH PROTECTION BOX	2
9	TC-20-1700003	SWITCH TEN223	2
10	TC-20-1700002	COVER	1
11	TC-20-1700001	TORSION SPRING	1
12	TC-10-1B00001	CROSS SWITCH COVER	2
13	GB95-5	FLAT WASHER	4
14	GB95-4	FLAT WASHER	20
15	GB93-4	STANDARD SPRING WASHER	12
16	GB818-M5×10-H	CROSS PANHEAD SCREW	4
17	GB818-M4×30-H	CROSS PANHEAD SCREW	4
18	GB818-M4×12-H	CROSS PANHEAD SCREW	4
19	GB818-M4×10-H	CROSS PANHEAD SCREW	4
20	GB79-M6×10	INNER HEXA CYLINDRICAL TERMINUS SET SCREW	2
21	GB70. 1-M5×10	INNER HEXA CYLINDRICAL SCREW	1
22	GB70. 1-M4×12	INNER HEXA CYLINDRICAL SCREW	1
23	GB6170-M4	HEXANGULAR NUT 1-TYPE	9
24	GB41-M6	HEXANGULAR NUT	2
25	C-A1-2200004	CROSS SWITCH	2



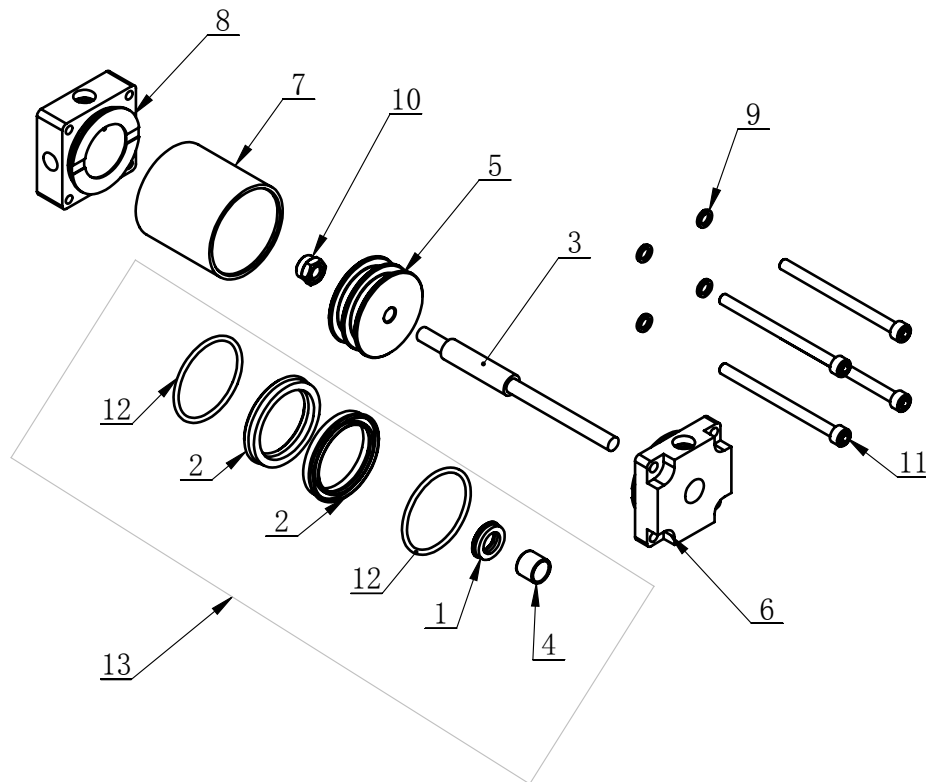
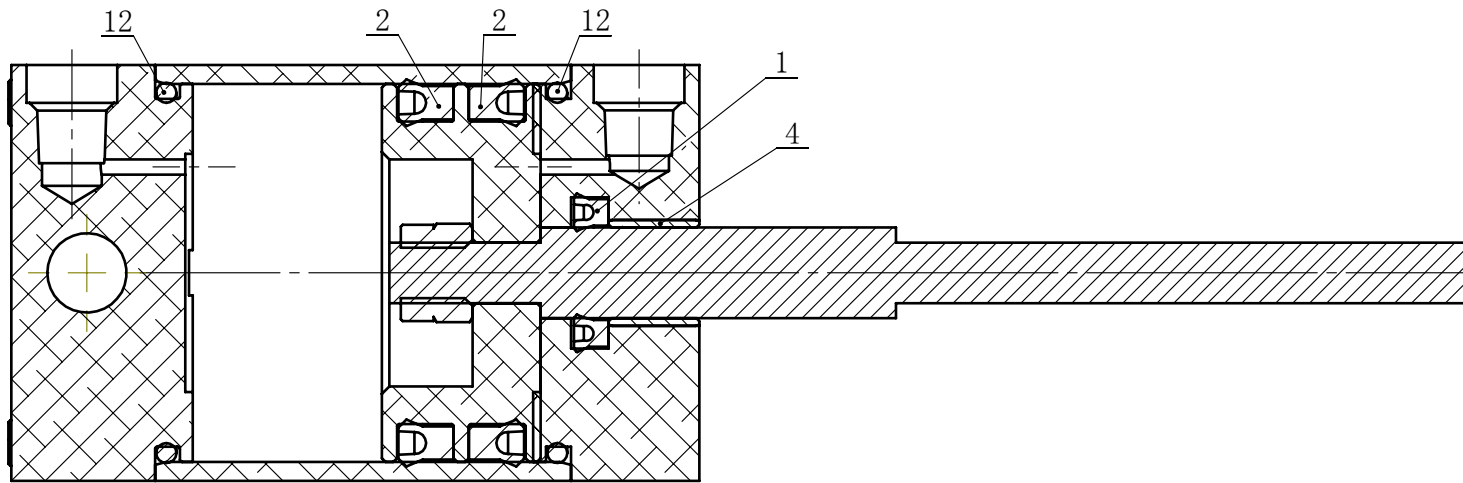
TC-20-1800000

ITEM	PART. No	DESCRIPTION.	QT. Y
1	TC-40-1200023	OIL FILLING NOZZLE	3
2	TC-24-1840000	PROTECT FRAME	1
3	TC-20-1880000	SUPPORT ARM COVER ASSEMBLY	1
4	TC-20-1870003	DUST PROOF RING 58X67X6	2
5	TC-20-1870000	ROTATING RACK ASSEMBLY	1
6	TC-20-1860000	LIFT CYLINDER ASSEMBLY	1
7	TC-20-1850000	CYLINDER	1
8	TC-20-1830000	BEAD PRESS ASSEMBLY	1
9	TC-20-1820000	LIFT CYLINDER ASSEMBLY	1
10	TC-20-1810000	SUPPORT ARM	1
11	TC-20-1800013	AIR HOSE PROTECTIVE SPRING	1
12	TC-20-1800012	FIXTURE SHAFT	1
13	TC-20-1800011	QUADRIC SHAFT	1
14	TC-20-1800010	HOOK	2
15	TC-20-1800009	ACCENTRIC BUSHING	2
16	TC-20-1800008	SCREW	2
17	TC-20-1800007	DUST PROOF RING LBH-80	1
18	TC-20-1800006	LOCK NUT	1
19	TC-20-1800005	PAD COVER	1
20	TC-20-1800004	SPRING	1
21	TC-20-1800003	LIMIT SHAFT	1
22	TC-20-1800002	CLAMP	1
23	TC-20-1800001	PIN SHAFT	1
24	PU-0603000	PU HOSE	1
25	PU-060300	PU HOSE	1
26	GB95-8	FLAT WASHER	5
27	GB95-16	FLAT WASHER	2
28	GB95-10	FLAT WASHER	6
29	GB93-8	STANDARD SPRING WASHER	3
30	GB93-6	STANDARD SPRING WASHER	4

ITEM	PART. No	DESCRIPTION.	QT. Y
31	GB894. 2-20	SHAFT ELATIC RETAINING RING B-TYPE	2
32	GB889. 2-M16×1. 5	1-TYPEPREVAILING TORQUE TYPE HEXAGON LOCK NUT	2
33	GB889. 1-M16	1-TYPE PREVAILING TORQUE TYPE HEXAGON LOCK NUT	1
34	GB889. 1-M10	1-TYPE PREVAILING TORQUE TYPE HEXAGON LOCK NUT	2
35	GB79-M6×10	INNER HEXA CYLINDRICAL TERMINUS SET SCREW	2
36	GB70. 1-M4×10	INNER HEXA CYLINDRICAL SCREW	2
37	GB5783-M8×25	HEXANGULAR BOLT	3
38	GB5783-M8×16	HEXANGULAR BOLT	2
39	GB5783-M14×35	HEXANGULAR BOLT	1
40	GB5783-M10×30	HEXANGULAR BOLT	2
41	GB5783-M10×25	HEXANGULAR BOLT	1
42	GB5782-M10×140	HEXANGULAR BOLT	1
43	GB5782-M10×100	HEXANGULAR BOLT	1
44	GB41-M6	HEXANGULAR NUT	4
45	GB41-M14	HEXANGULAR NUT	3
46	GB41-M10	HEXANGULAR NUT	1
47	FPU-6	UNION STRAIGHT	1
48	FPL 6-01	MALE ELBOW	1
49	FPE 6	UNION TEE	1
50	FJSC 6-01	ELBOW SPEED CONTROLLER	1
51	C-01-100000B	R-RING	2

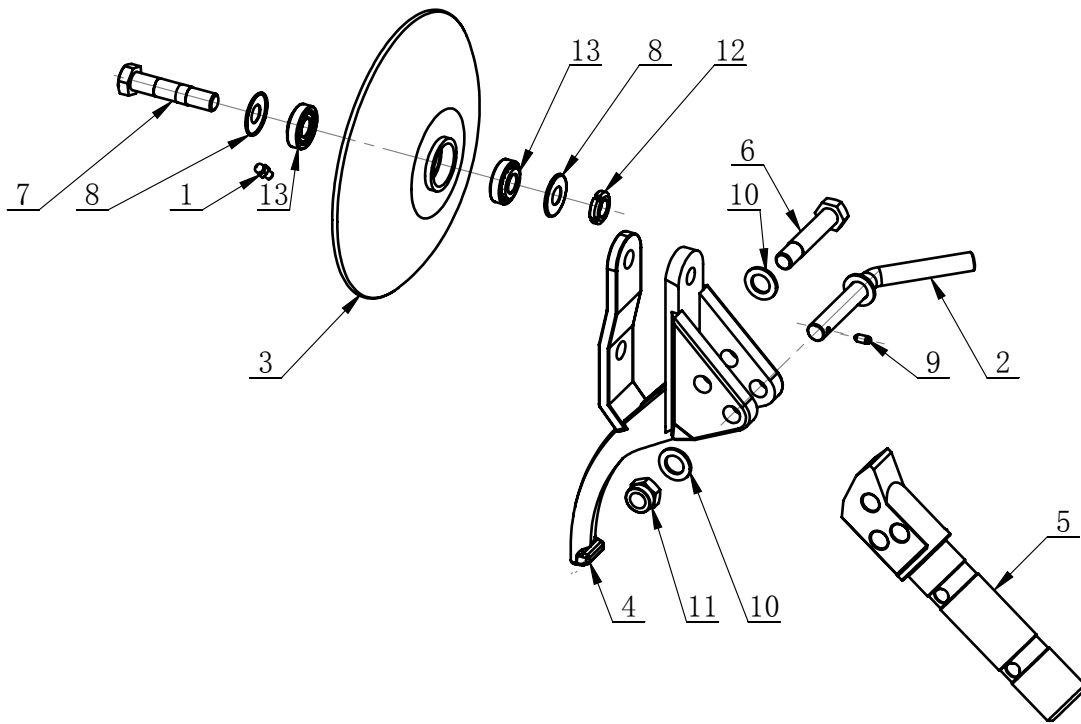


ITEM	PART. No	DESCRIPTION.	QT. Y
1	TC-20-1821000	LIFT CYLINDER ASSEMBLY	1
2	TC-20-1820004	CYLINDRICAL PIN	1
3	TC-20-1820002	DUAL TOOL BUSHING	1
4	TC-20-1820001	GEAR	1
5	PLS6-01	INSERT ELBOW	2
6	GB95-8	FLAT WASHER	1
7	GB889. 1-M8	LOCKNUT M8	1
8	GB879. 2-6×75	ELASTIC CYLINDRICAL PIN, LIGHT	1
9	GB879. 2-4×35	ELASTIC CYLINDRICAL PIN, LIGHT	2
10	C-54-0000003	Floor mat	1



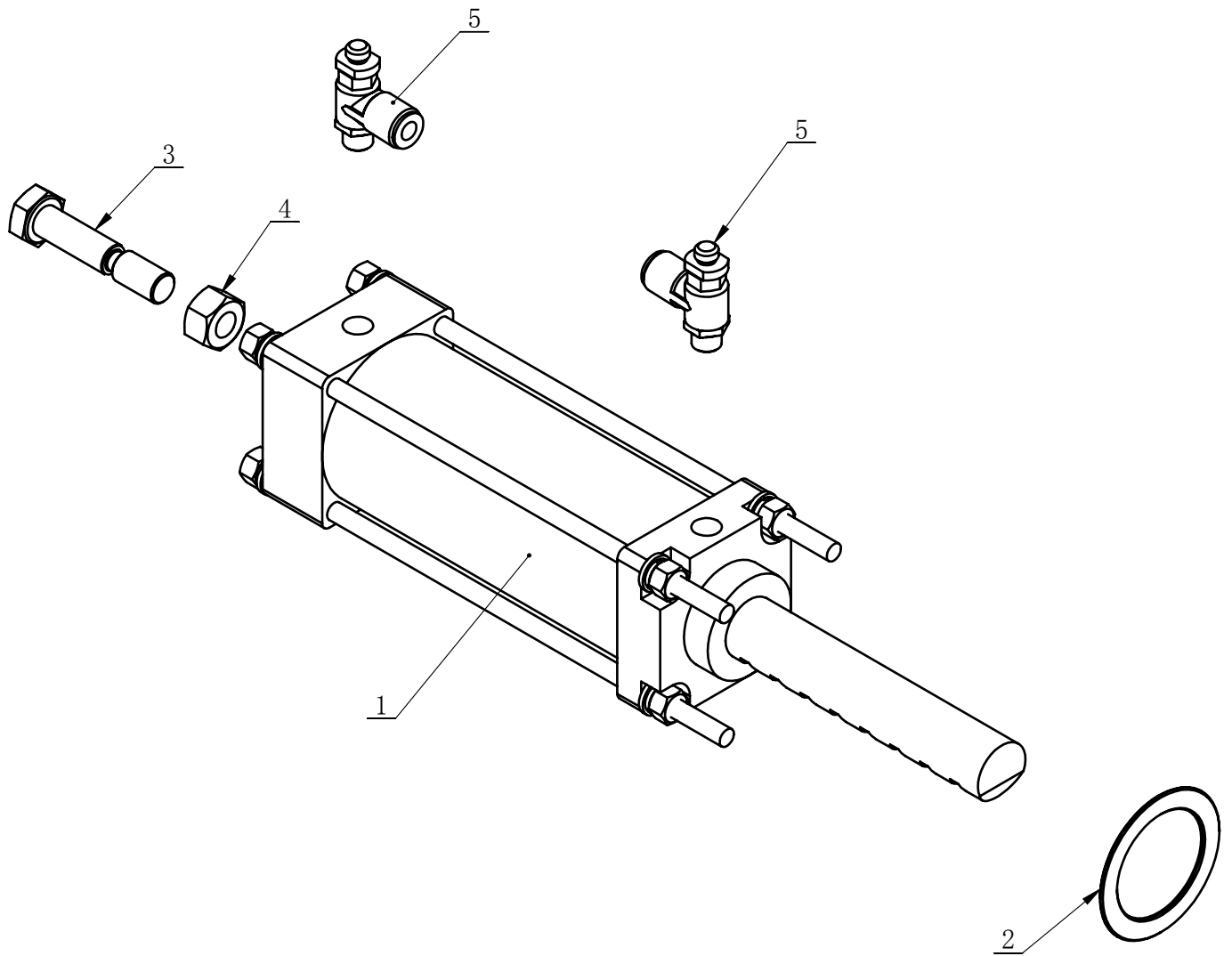
ITEM	PART. No	DESCRIPTION.	QT. Y
1	TC-20-1821008	SOL ENOID VALVE	1
2	TC-20-1821007	Y-RING U2271-50*40*7	2
3	TC-20-1821006	PISTON ROD	1
4	TC-20-1821005	BEARING JH1-B1212	1
5	TC-20-1821004	PISTON	1
6	TC-20-1821003	CYLINDER FRONT COVER	1
7	TC-20-1821002	CYLINDER HOUSING	1
8	TC-20-1821001	CYLINDER REAR COVER	1
9	GB93-6	STANDARD SPRING WASHER	4
10	GB889. 1-M8	LOCKNUT M8	1
11	GB70. 1-M6×85	INNER HEXA CYLINDRICAL SCREW	4
12	GB3452. 1-45×2. 65-G	HYDRAULIC-PNEUMATIC RUBBER O-RING G TYPE	2
13	TC-20-1821100	ASSEMBLY SEALING	1

TC-20-1830000

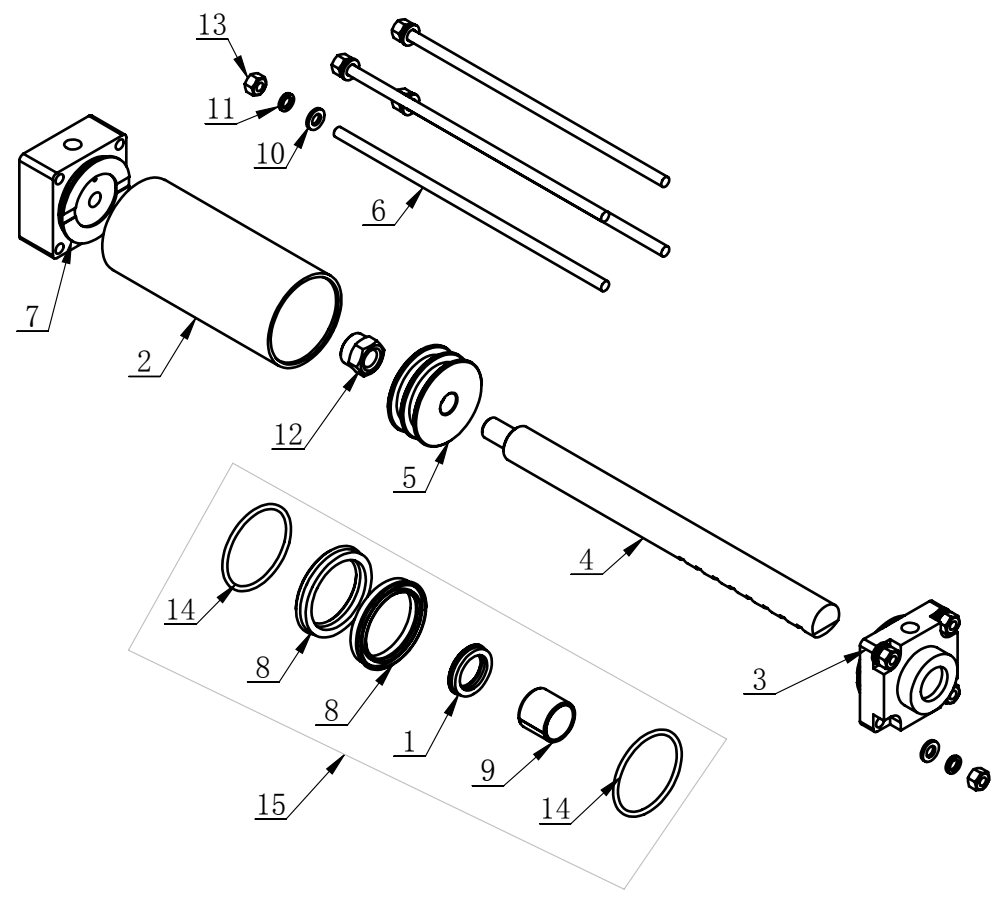
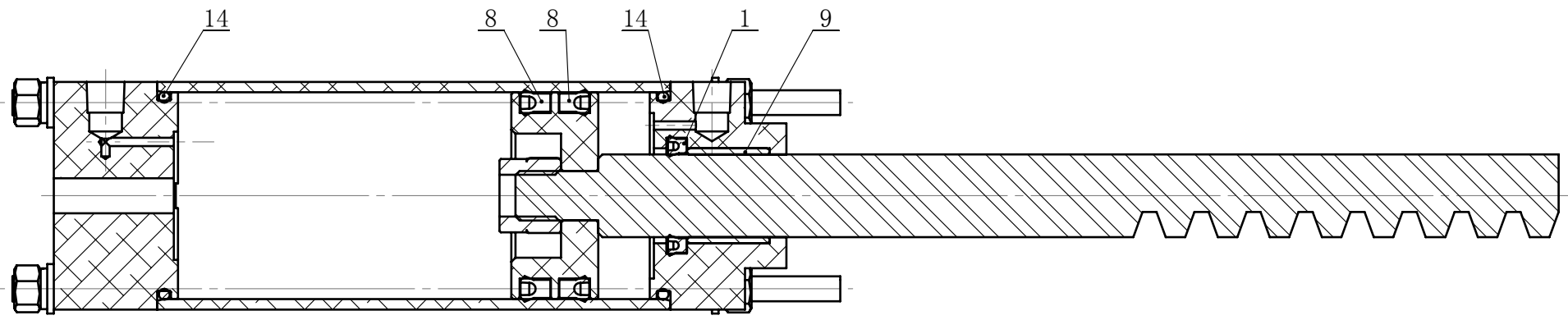


ITEM	PART. No	DESCRIPTION.	QT. Y
1	TC-40-1200023	OIL FILLING NOZZLE	1
2	TC-20-1832000	HANDLE	1
3	TC-20-1831000	BEAD PRESS DISK	1
4	TC-20-1830005	SHARP NOSE TOOL	1
5	TC-20-1830004	DUAL TOOL SUPOPORT SHAFT	1
6	TC-20-1830003	SHAFT	1
7	TC-20-1830002	SHAFT	1
8	TC-20-1830001	BEARING PROTECTIVE COVER	2
9	H-10-1000021	LOCK SCREW	1
10	GB95-20	FLAT WASHER	2
11	GB889. 2-M20×1. 5	1-TYPEPREVAILING TORQUE TYPE HEXAGON LOCK NUT	1
12	GB812-M20×1. 5	CIRCULAR NUT	1
13	GB297-30204	CYLINDRICAL BALL BEARING	2

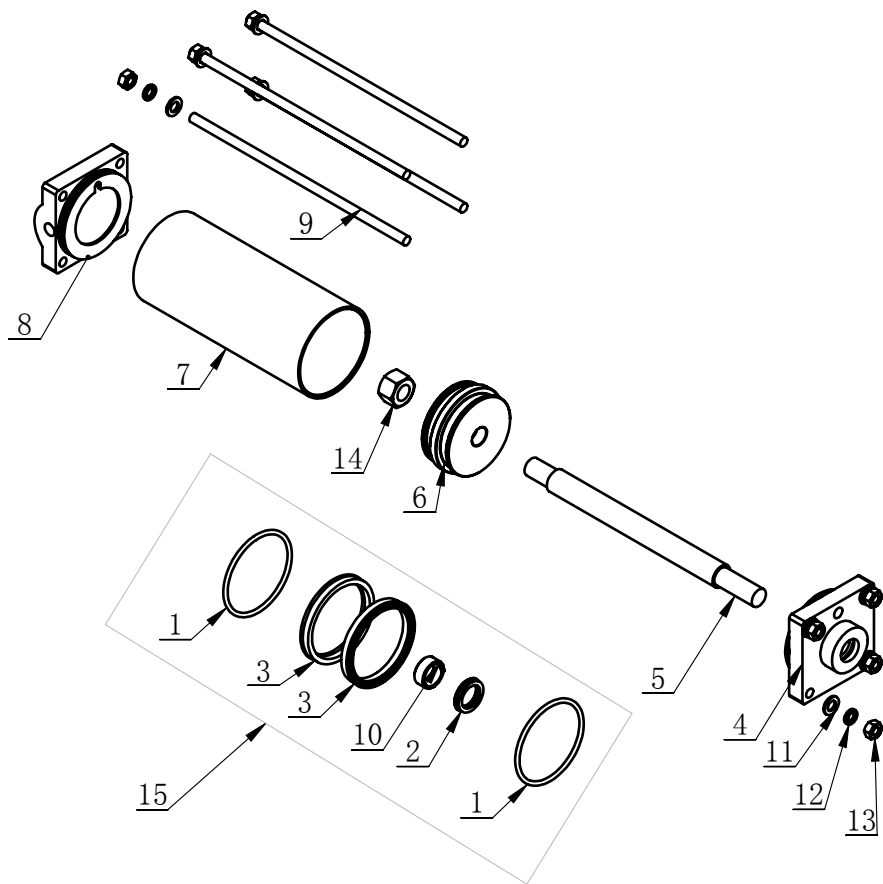
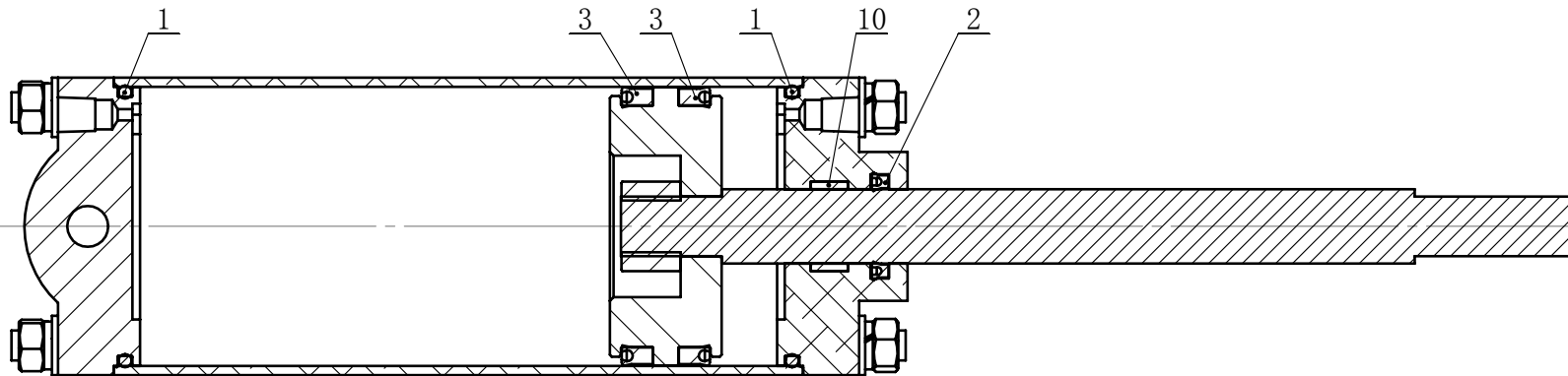
TC-20-1850000



ITEM	PART. No	DESCRIPTION.	QT. Y
1	TC-20-1851000	CYLINDER	1
2	TC-20-1850002	PAD	1
3	TC-20-1850001	LIMIT SCREW	1
4	GB41-M10	HEXANGULAR NUT	1
5	FJSC 6-01	ELBOW SPEED CONTROLLER	2

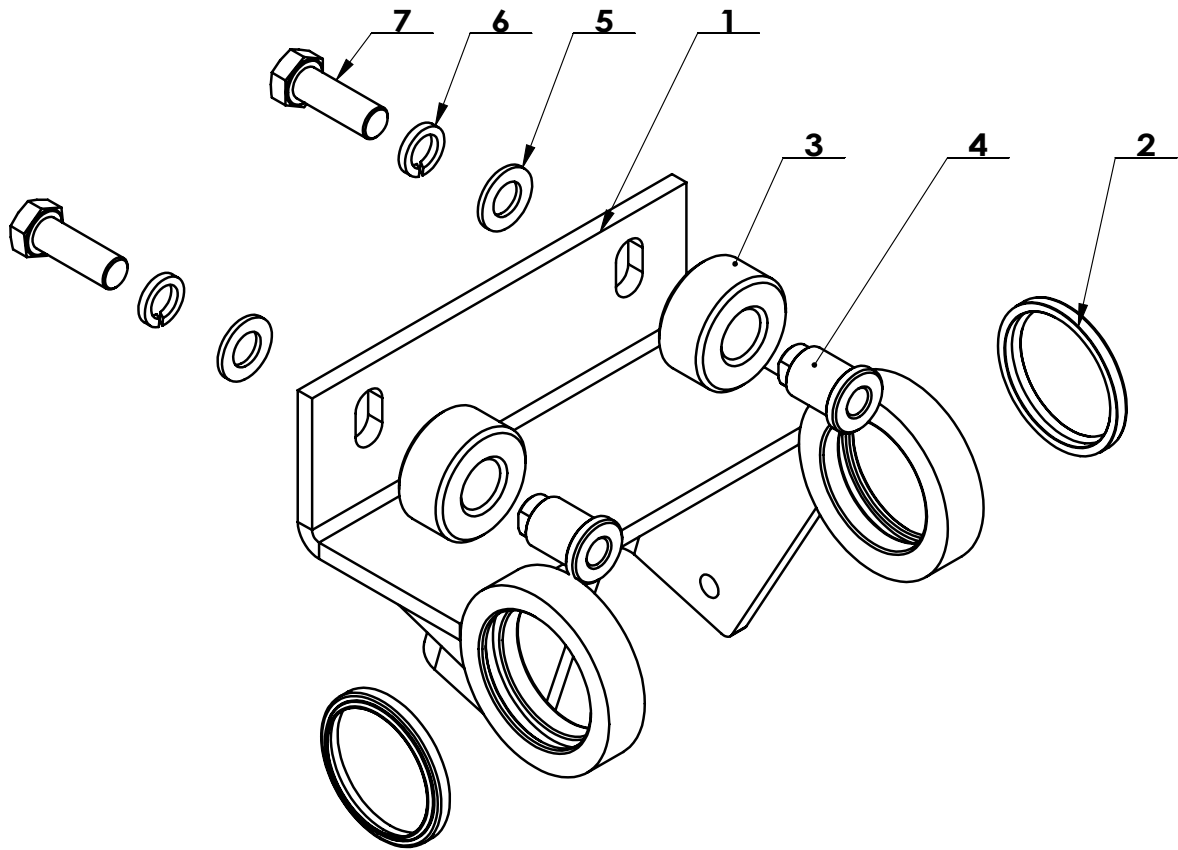


ITEM	PART. No	DESCRIPTION.	QT. Y
1	TC-20-1860009	Y-RING 20*28*5	1
2	TC-20-1851007	CYLINDER HOUSING	1
3	TC-20-1851006	CYLINDER FRONT HEAD	1
4	TC-20-1851004	PISTON ROD	1
5	TC-20-1851003	PISTON	1
6	TC-20-1851002	TIE ROD	4
7	TC-20-1851001	CYLINDER REAR HEAD	1
8	TC-20-1821007	Y-RING U2271-50*40*7	2
9	TB-L-0303001		1
10	GB95-6	FLAT WASHER	8
11	GB93-6	STANDARD SPRING WASHER	8
12	GB889.1-M12	1-TYPE PREVAILING TORQUE TYPE HEXAGON LOCK NUT	1
13	GB41-M6	HEXANGULAR NUT	8
14	GB3452.1-45×2.65-G	HYDRAULIC-PNEUMATIC RUBBER O-RING G TYPE	2
15	TC-20-1851100	ASSEMBLY SEALING	1



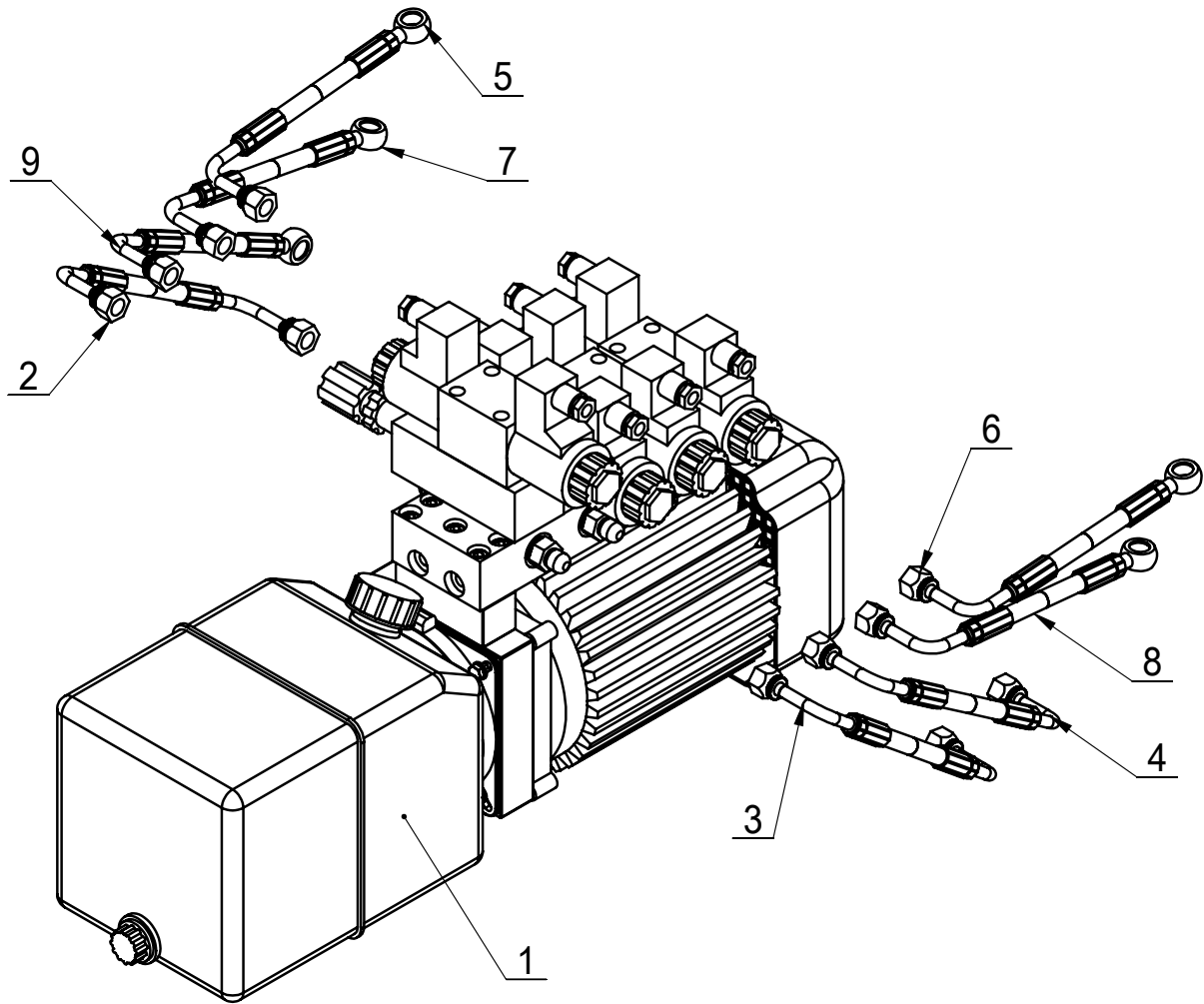
ITEM	PART. No	DESCRIPTION.	QT. Y
1	TC-20-1860010	HYDRAULIC-PNEUMATIC RUBBER O-RING G TYPE	2
2	TC-20-1860009	Y-RING 20*28*5	1
3	TC-20-1860008	Y-RING 75*65*8	2
4	TC-20-1860006	CYLINDER FRONT HEAD	1
5	TC-20-1860005	PISTON ROD	1
6	TC-20-1860004	PISTON	1
7	TC-20-1860003	LIFT CYLINDER HOUSING	1
8	TC-20-1860002	CYLINDER REAR HEAD	1
9	TC-20-1860001	STUD	4
10	TC-10-1720006	SUPPORT RING GT-9.7A	1
11	GB95-8	FLAT WASHER	8
12	GB93-8	STANDARD SPRING WASHER	8
13	GB6170-M8	HEXANGULAR NUT 1-TYPE	8
14	GB41-M16	HEXANGULAR NUT	1
15	TC-20-1861000	ASSEMBLY SEALING	1

TC-20-1870000

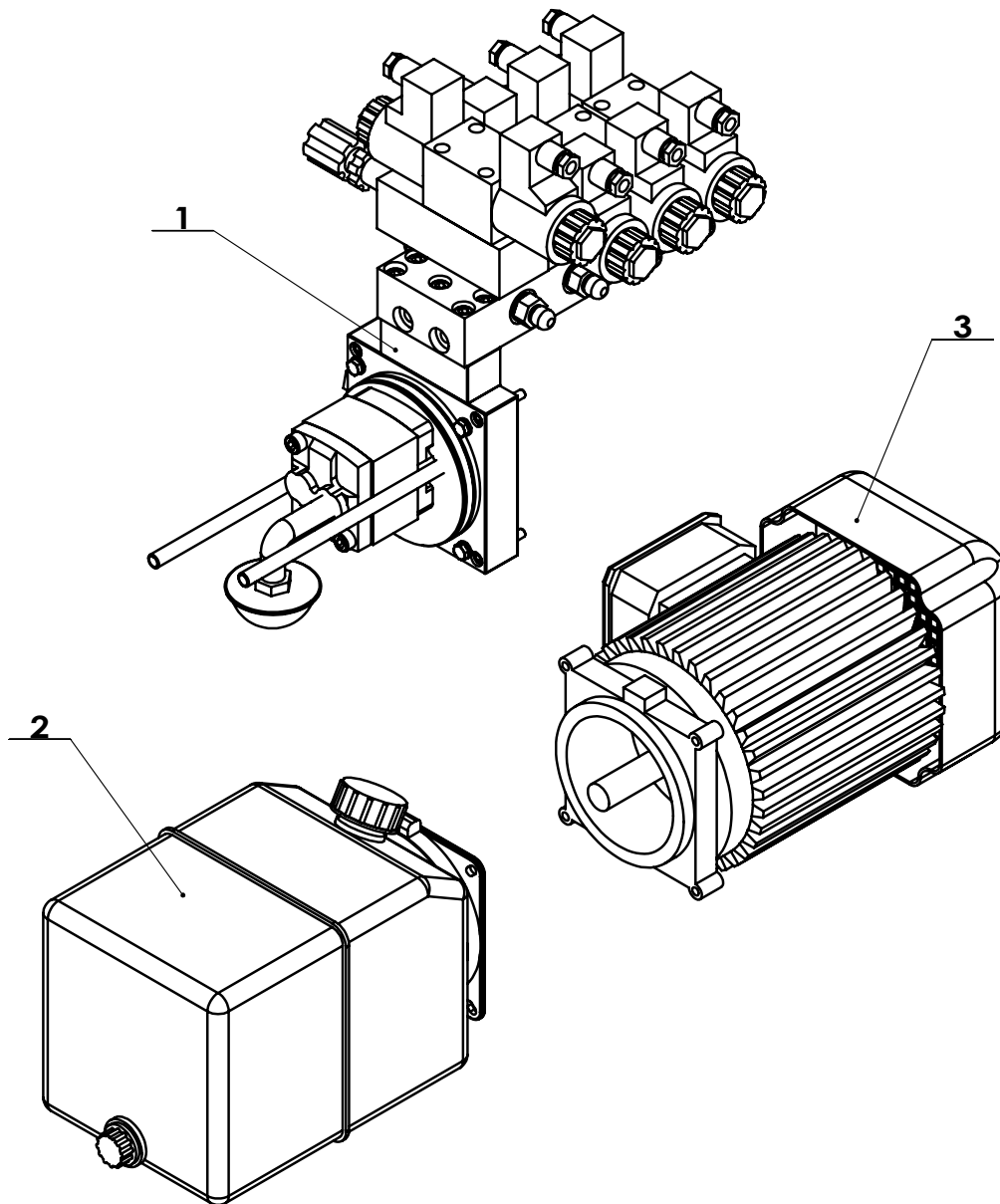


ITEM	PART. No	DESCRIPTION.	QT. Y
1	TC-20-1871000	TURNING BRACKET ASSEMBLY	1
2	TC-20-1870003	DUST PROOF RING 58X67X6	2
3	TC-20-1870002	ROTATING COVER	2
4	TC-20-1870001	ROTATING AXLE COVER	2
5	GB95-14	FLAT WASHER	2
6	GB93-14	STANDARD SPRING WASHER	2
7	GB5783-M14×40	HEXANGULAR BOLT	2

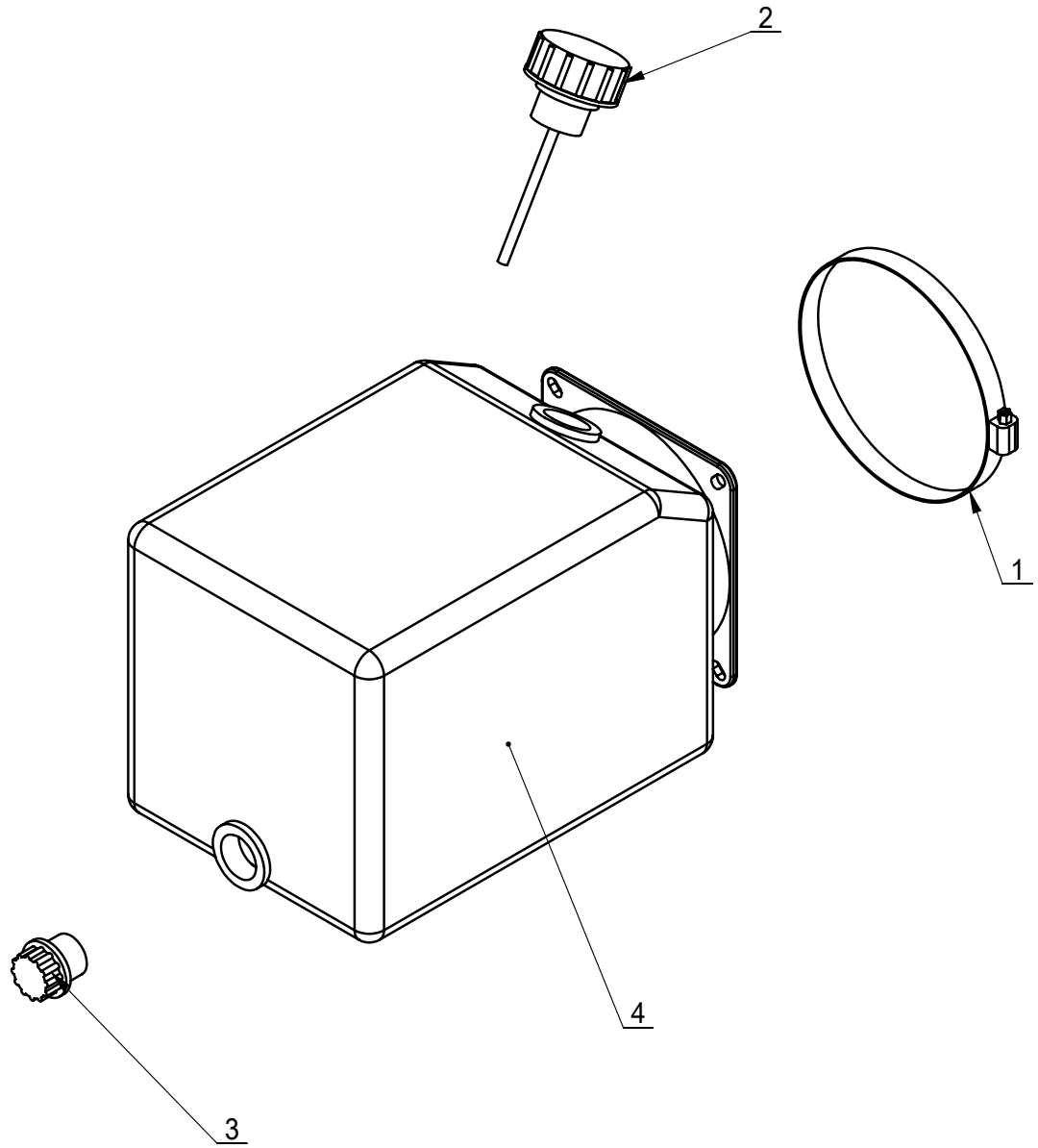
TC-20-1030000



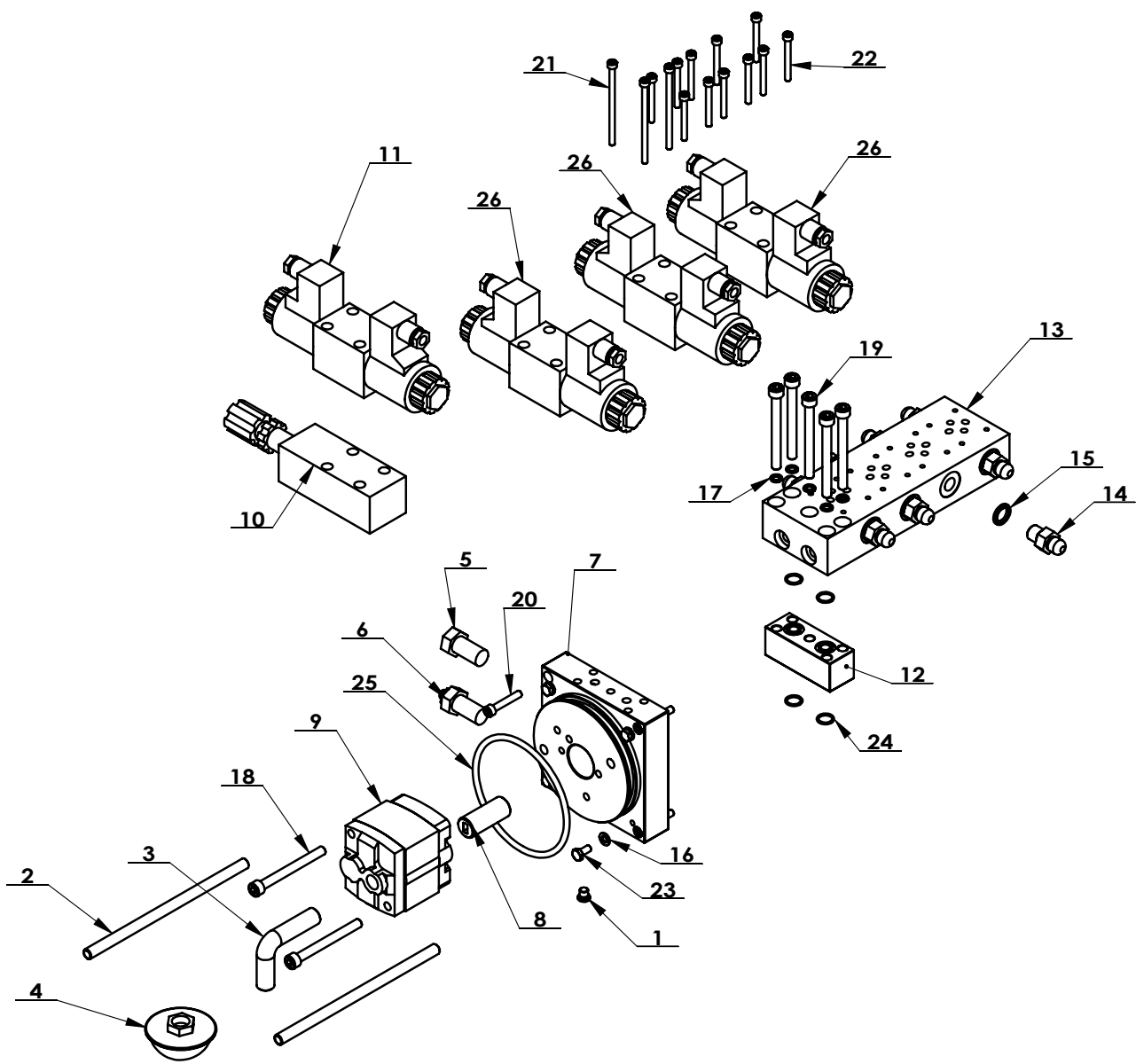
ITEM	PART.No	DESCRIPTION.	QT.Y
1	TC-20-1031000	PUMP ASSEMBLY	1
2	YG-1101400	SPINDLE OIL CYLINDER RODLESS CAVITY TUBING	1
3	YG-1101500	SPINDLE OIL CYLINDER ROD CHAMBER OIL	1
4	YG-1102650	TOOL ARM CYLINDER ROD CHAMBER OIL	1
5	YG-1201200	LIFT ARM CYLINDER RODLESS CAVITY TUBING	1
6	YG-1201300	LIFT CYLINDER ROD CHAMBER OIL	1
7	YG-1202000	NO MAIN TRAILER CYLINDER RODLESS CAVITY TUBING	1
8	YG-1202300	THE MAIN TRAILER CYLINDER ROD CHAMBER OIL	1
9	YG-1204000	TOOL ARM RODLESS CAVITY TUBING	1



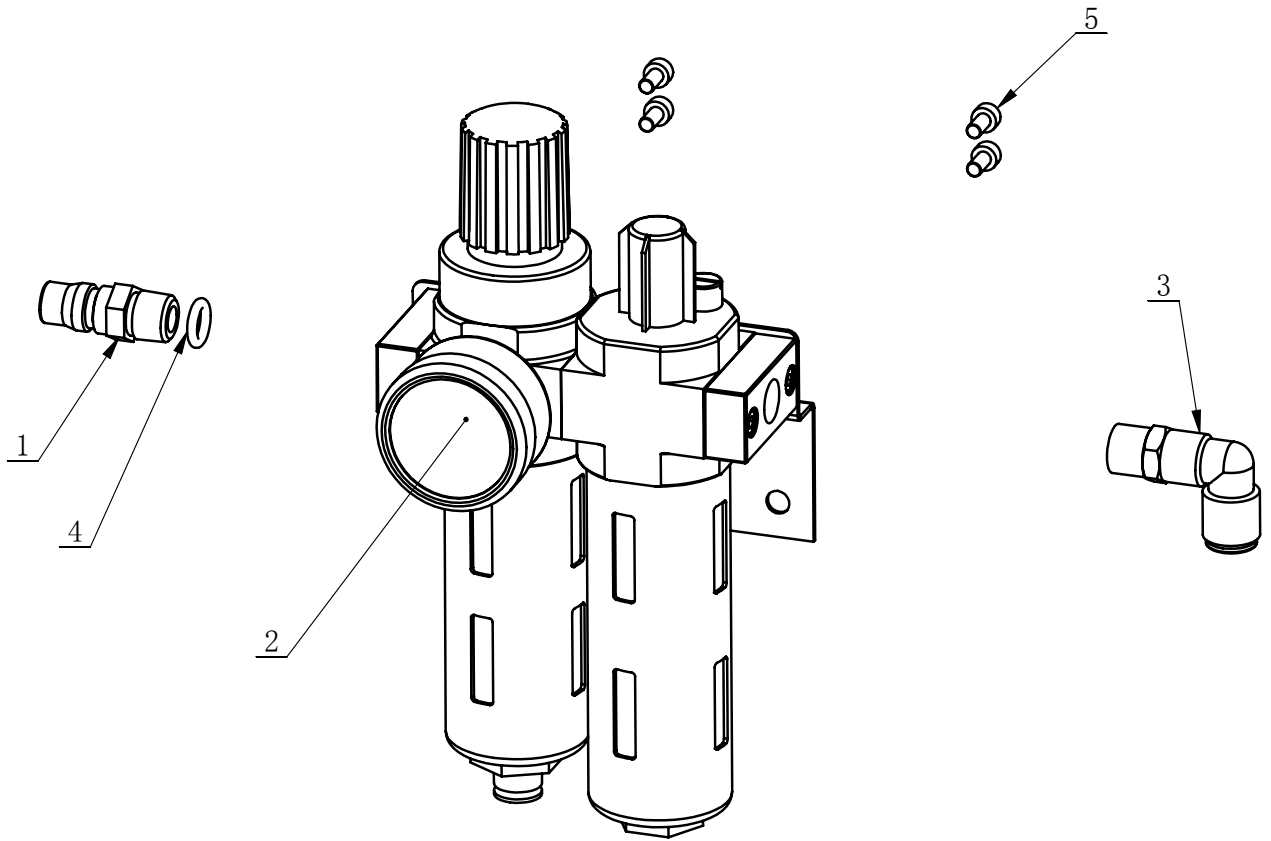
ITEM	PART. No	DESCRIPTION.	QT. Y
1	TC-YY-5900000	VALVE PLATE COMPONENT	1
2	TC-YX-5880000	PUMP STATION COMPONENTS	1
3	TC-DJ-5880007	PUMP MOTOR	1



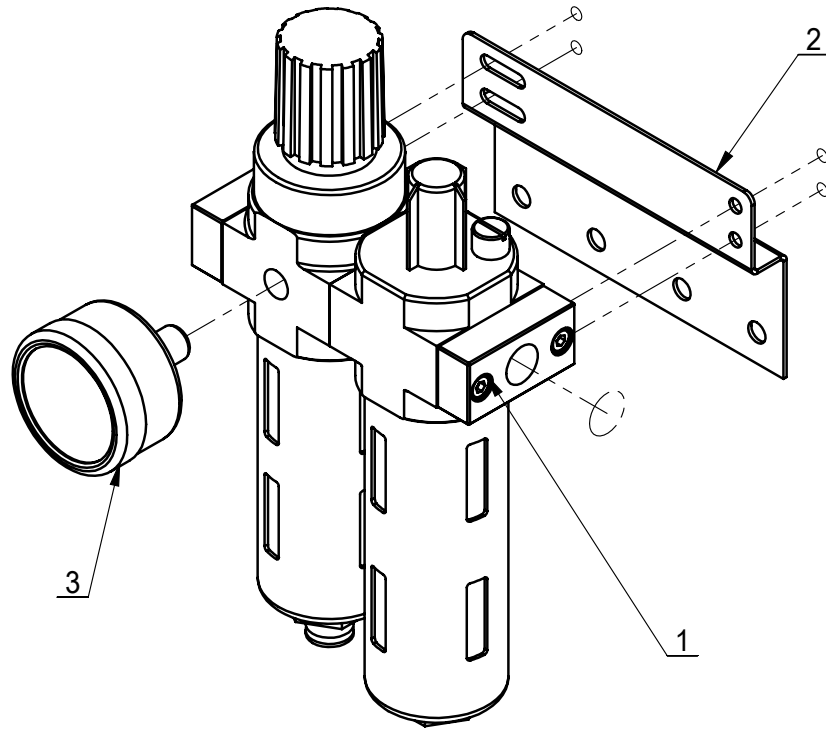
ITEM	PART. No	DESCRIPTION.	QT. Y
1	TC-20-1031213	THROAT BUCKLE	1
2	TC-20-1031209	THE CUP	1
3	TC-20-1031207	DRAIN PLUG	1
4	TC-20-1031204	THE FUEL TANK	1



ITEM	PART. No	DESCRIPTION.	QT. Y
1	TC-40-1032009	TECHNOLOGY OF PLUG	1
2	TC-20-1031212	RETURN PIPE	2
3	TC-20-1031211	FILTER POLE	1
4	TC-20-1031210	FILTER	1
5	TC-20-1031206	CHECK VALVE	1
6	TC-20-1031205	THE PRESSURE REGULATING VALVE	1
7	TC-20-1031203A	CONNECTION PLATE	1
8	TC-20-1031202	COUPLING	1
9	TC-20-1031201	PUMP	1
10	TC-20-1031105	THE PRESSURE REGULATING VALVE	1
11	TC-20-1031103	SOLENOID VALVE	1
12	TC-20-1031102A	VALVE PLATE CONNECTION PLATE	1
13	TC-20-1031101A	THE VALVE BLOCK	1
14	TC-10-1620005	OIL ROUTE DOUBLE SCREW ROD	8
15	JB982-14	SEALING COMPOUND	8
16	GB95-6	FLAT WASHER	4
17	GB859-6	LIGHT SPRING WASHER	5
18	GB70. 1-M8×80	INNER HEXA CYLINDRICAL SCREW	2
19	GB70. 1-M8×80	INNER HEXA CYLINDRICAL SCREW	5
20	GB70. 1-M6×35	INNER HEXA CYLINDRICAL SCREW	4
21	GB70. 1-M5×45	INNER HEXA CYLINDRICAL SCREW	3
22	GB70. 1-M5×45	INNER HEXA CYLINDRICAL SCREW	11
23	GB5783-M6×12	HEXANGULAR BOLT	4
24	GB3452. 1-12. 1×1. 8-G	HYDRAULIC-PNEUMATIC RUBBER O-RING G TYPE	4
25	GB3452. 1-110×5. 3-G	HYDRAULIC-PNEUMATIC RUBBER O-RING G TYPE	1
26	TC-20-1031104	SOLENOID VALVE	3

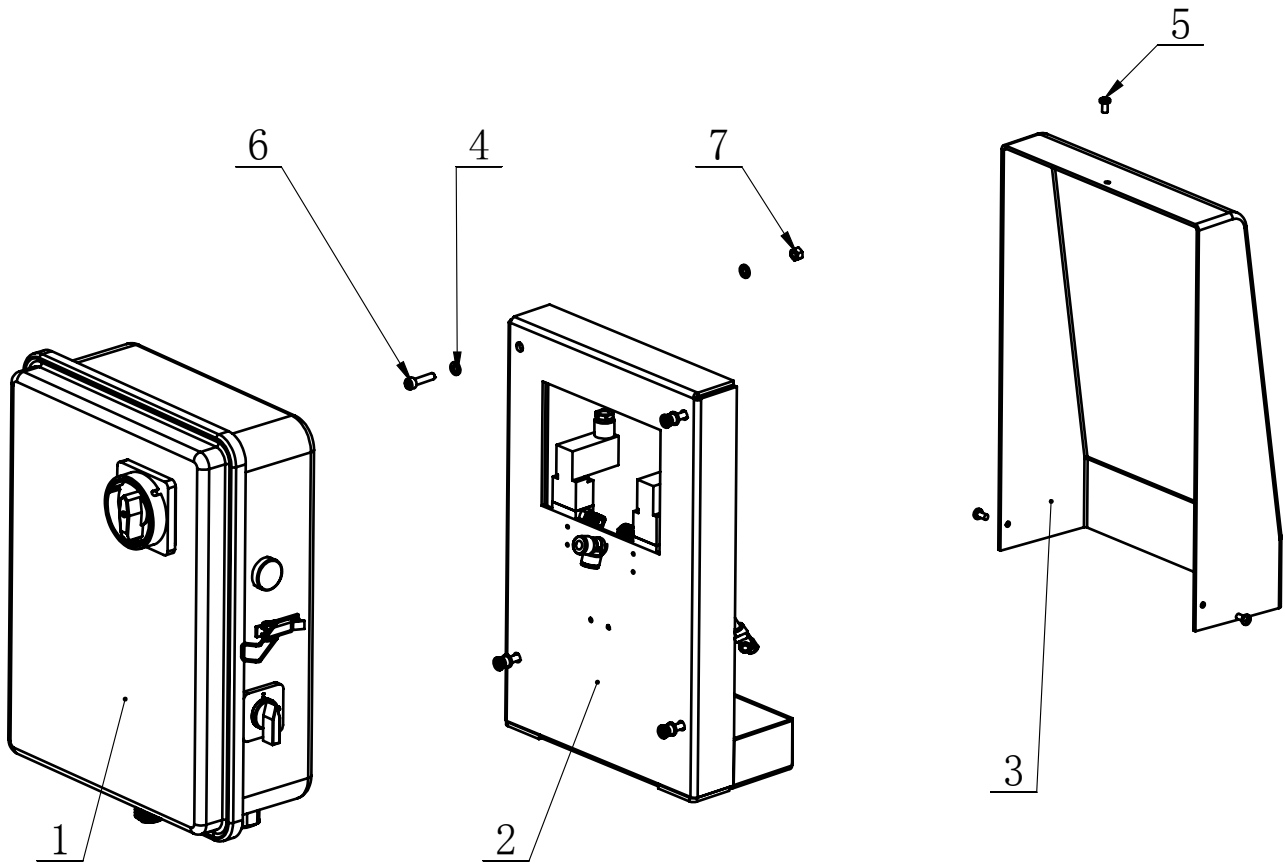


ITEM	PART. No	DESCRIPTION.	QT. Y
1	C-54-8000011	AIR SUPPLY CONNECTOR	1
2	CT-F-2000200F	AIR REGULATOR	1
3	FPL 8-02	INSERT ELBOW $\Phi 8$, R1/4	1
4	GB3452.1-8×2.65-A	O-RING G TYPE	1
5	GB70.1-M4×8	INNER HEXA CYLINDRICAL SCREW	4

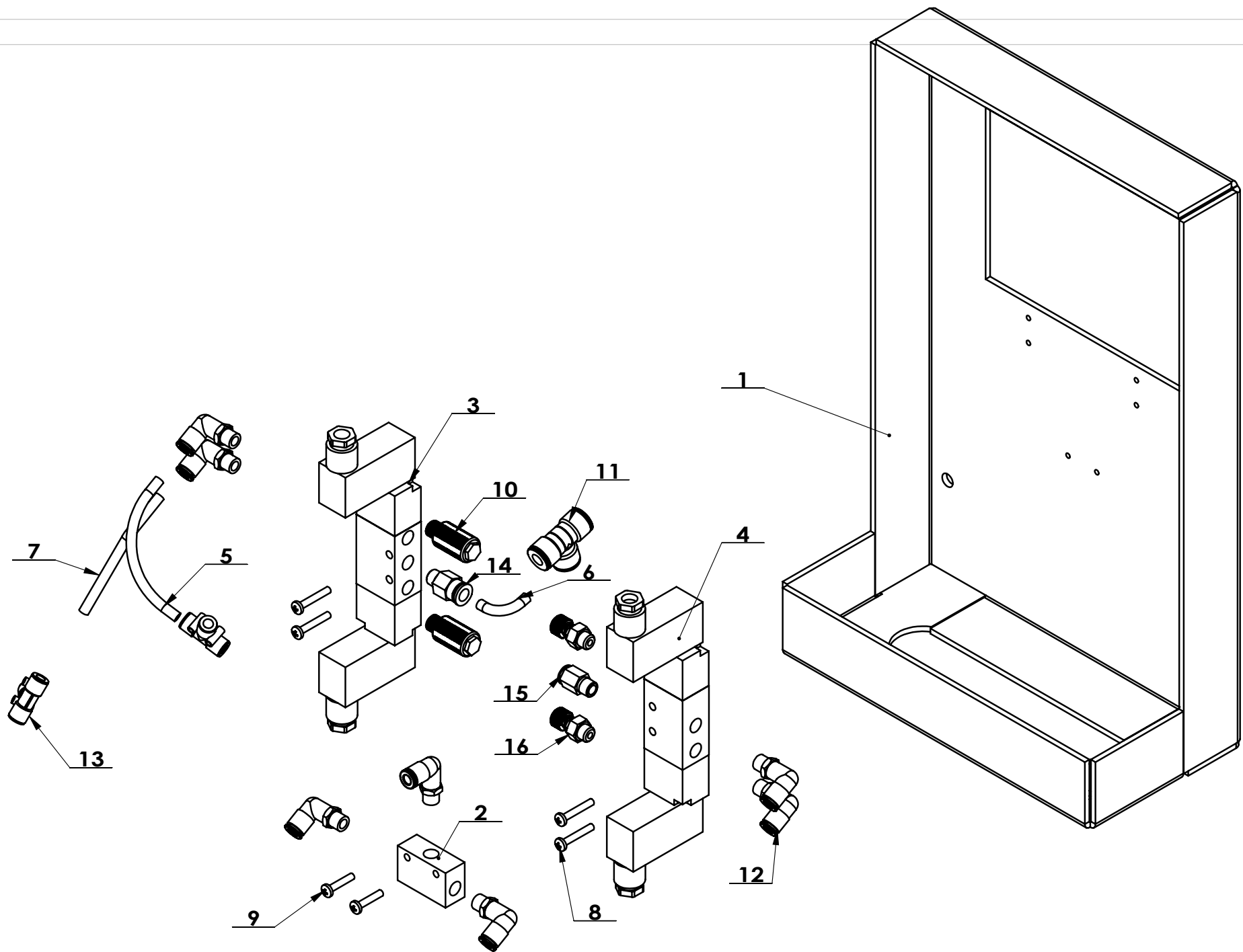


ITEM	PART.No	DESCRIPTION.	QT.Y
1	CT-F-2000070	INVERESD CONNECTION	1
2	CT-F-2000040	AIR REGULATOR BRACKET	1
3	CT-F-2000003	PRESSURE GAUGE	1

TC-20-1900000

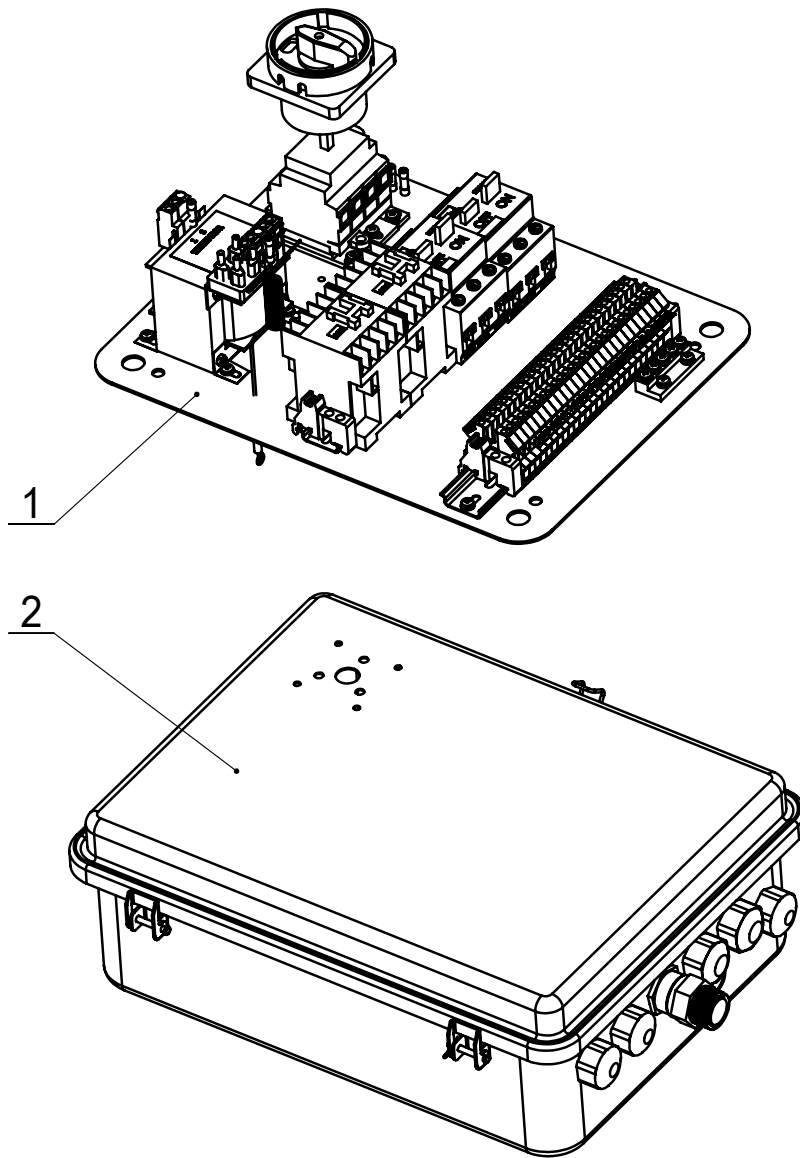


ITEM	PART. No	DESCRIPTION.	QT. Y
1	TC-20-2032380	ELECTRICAL CABINET 380V 50Hz	1
2	TC-20-1920000	VALVE ASSEMBLY	1
3	TC-20-1900001	COVER	1
4	GB95-6	FLAT WASHER	8
5	GB818-M5×10-H	CROSS PANHEAD SCREW	3
6	GB70. 1-M6×25	INNER HEXA CYLINDRICAL SCREW	4
7	GB41-M6	HEXANGULAR NUT	4

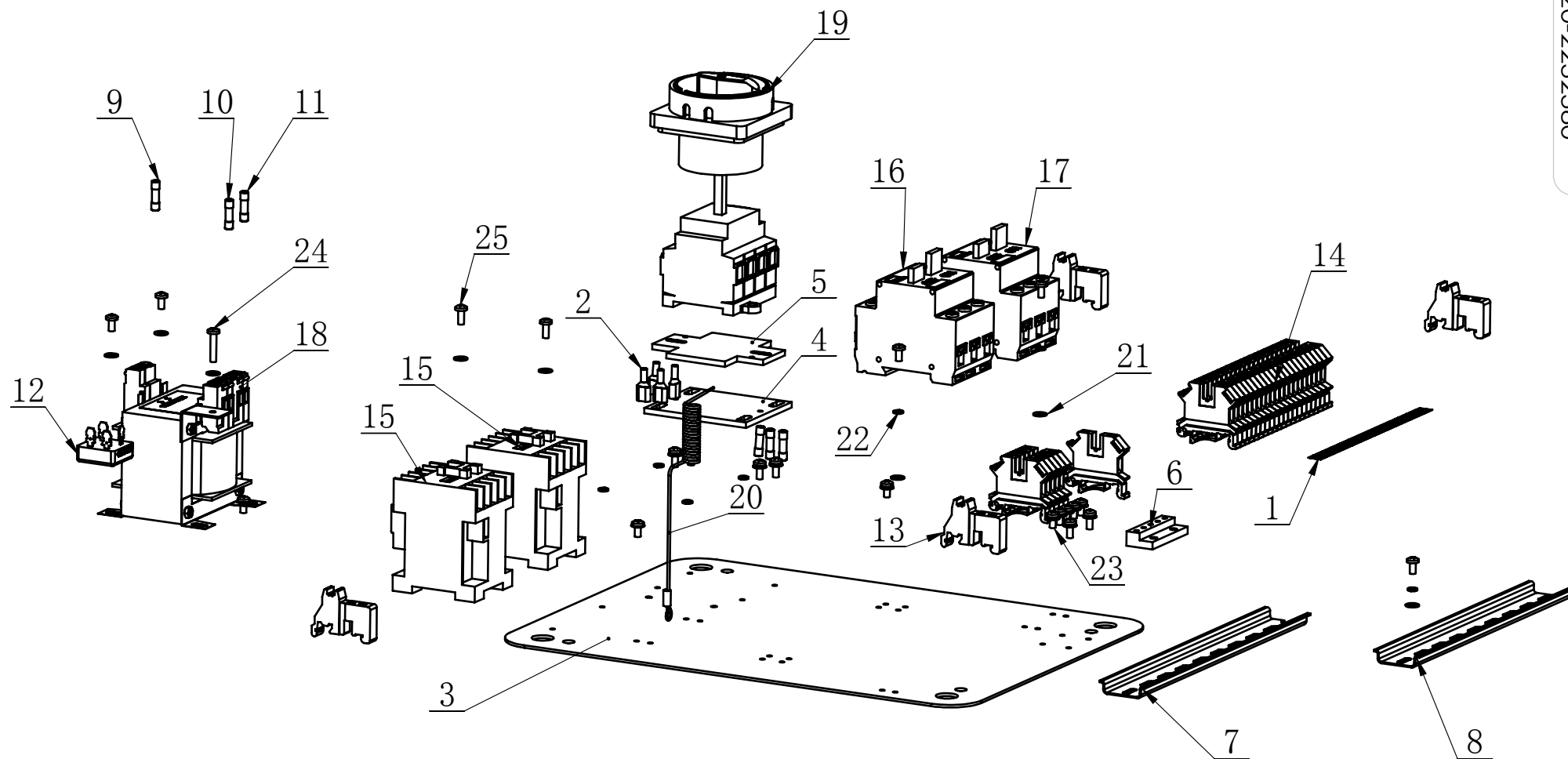


ITEM	PART. No	DESCRIPTION.	QT. Y
1	TC-20-1921000	FIX BRACKET	1
2	TC-20-1920003	VALVE ST-01	1
3	TC-20-1920002	VALVE 358-011-02	1
4	TC-20-1920001	VALVE 378-011-02	1
5	PU-0801500	PU HOSE	1
6	PU-060050	PU HOSE	1
7	PU-0600150	PU HOSE	1
8	GB818-M4×25-H	CROSS PANHEAD SCREW	4
9	GB818-M4×20-H	CROSS PANHEAD SCREW	2
10	FSK 01	PARTICLE SILENCER	2
11	FPT 6-8-8	DIFFERENT DIA OF UNION TEE	1
12	FPL 6-01	MALE ELBOW	7
13	FPE 6	UNION TEE	2
14	FPC 8-01	MALE STRAIGHT	1
15	FPC 6-01	MALE STRAIGHT	1
16	FJSR 01	BRASS REGULATOR SILENCER	2

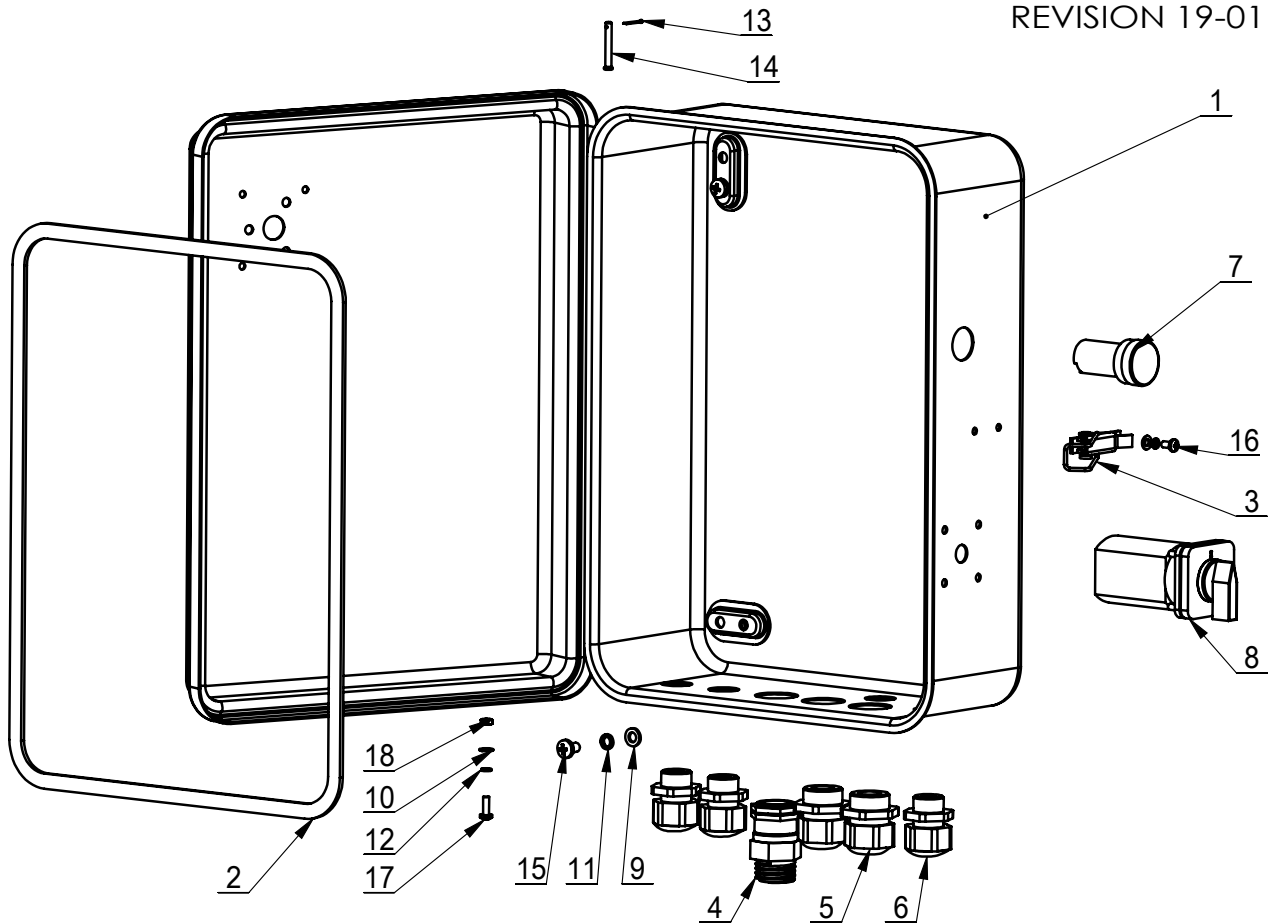
TC-20-2032380



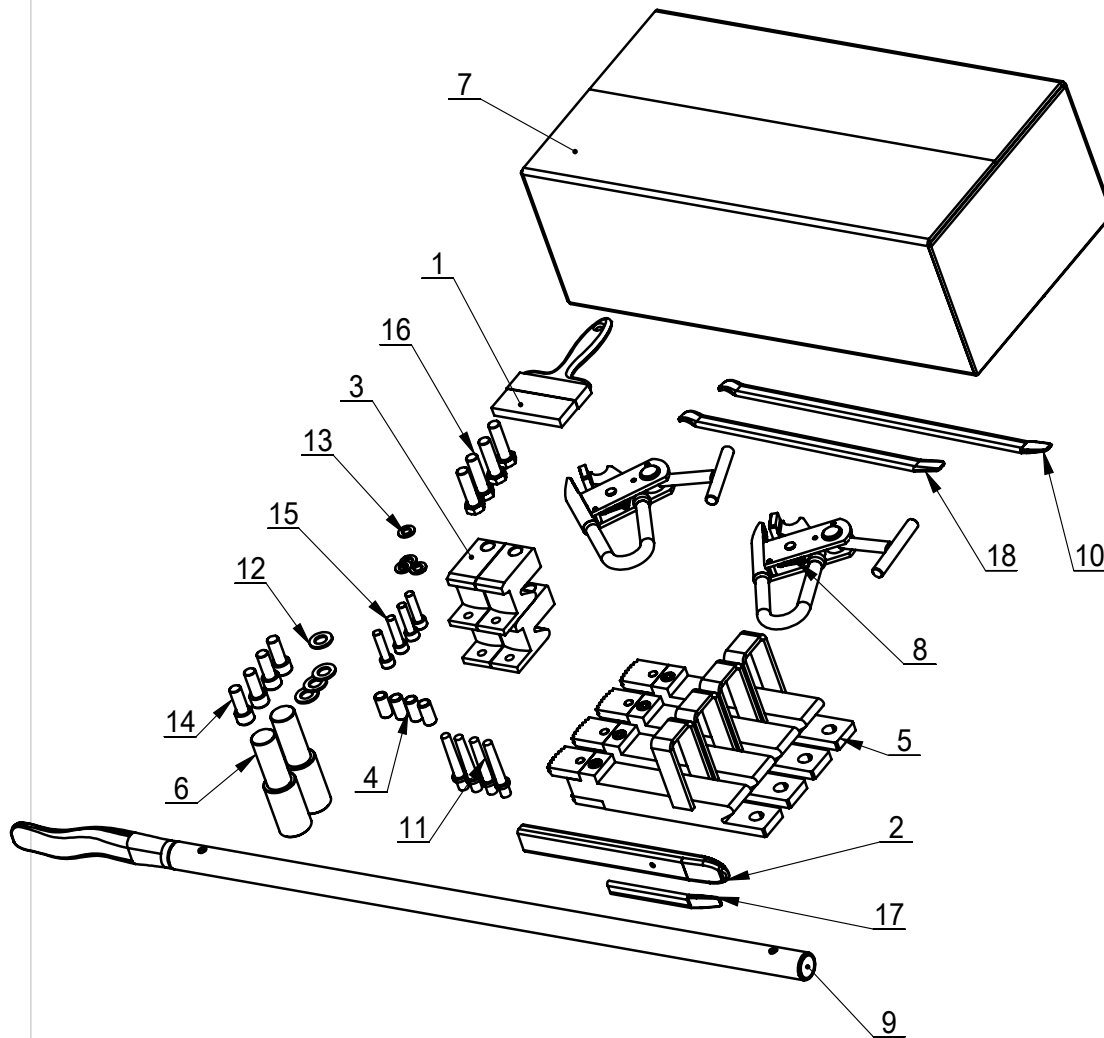
ITEM	PART.No	DESCRIPTION.	QT.Y
1	TC-20-2232380	ELECTRICAL CONTROL PLATE	1
2	TC-20-2132321	LC590 THREE-PHASE ELECTRIC CONTROL BOX	1



ITEM	PART. No	DESCRIPTION.	QT. Y
1	TC-E-7859003	LABELING-590D THREE PHASE	1
2	TC-E-7700063	6.3 IN SPRING	4
3	TC-E-7600001	ELECTRICAL BLOCK BOAR	1
4	TC-E-7500002	SWITCH FIX PLATE	1
5	TC-E-7500001	SWITCH FIX PLATE	1
6	TC-E-7400001	EARTHING TERMINAL	1
7	TC-E-7363535	FIXED PLATE	1
8	TC-E-7363520	LONG FIXED PLATE 35mm/200MM	1
9	TC-E-7152005	Φ5 x20 FUSE TUBE	2
10	TC-E-7152004	FUSE	2
11	TC-E-7152001	FUSE	2
12	TC-E-7103510	RECTIFIER BRIDGE BLOCK	1
13	TC-E-5130000	CLAMP	4
14	TC-E-5110025	TERMINATOR	27
15	TC-E-4201224	AC CONTACTOR	2
16	TC-E-4110810	DZ108-20	1
17	TC-E-4110806	DZ108-20	1
18	TC-E-3838001	THREE WINDING TRANSFORMER	1
19	TC-E-2442525	SWITCH SWITCH	1
20	TC-E-1101480	ELECTRIC CONTROL BOX GROUNDING WIRE	1
21	GB95-4	FLAT WASHER	22
22	GB93-4	STANDARD SPRING WASHER	22
23	GB818-M4×8-H	CROSS PANHEAD SCREW	13
24	GB818-M4×20-H	CROSS PANHEAD SCREW	1
25	GB818-M4×10-H	CROSS PANHEAD SCREW	8

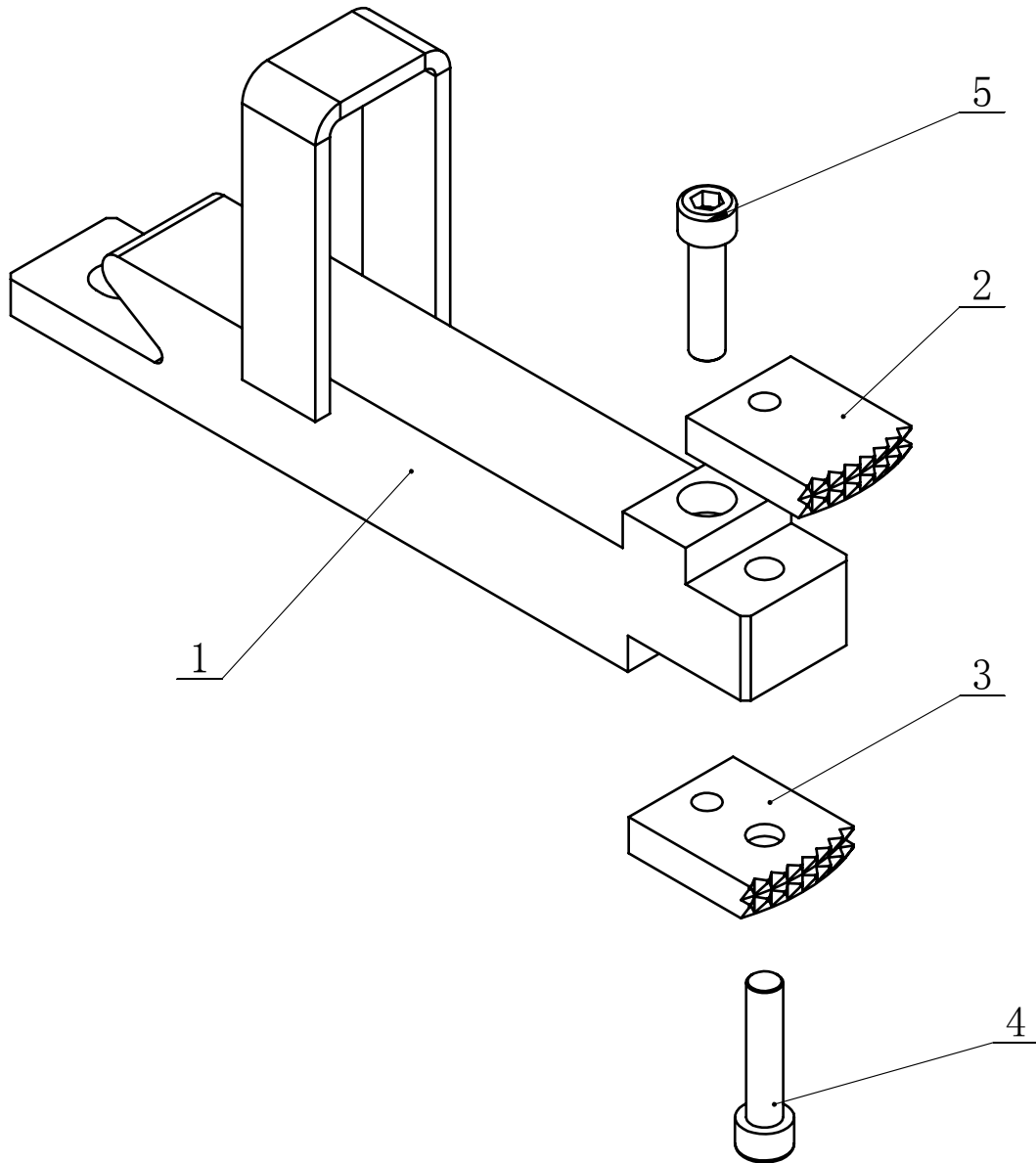


ITEM	PART.No	DESCRIPTION.	QT.Y
1	TC-E1-2000000	ELECTRICAL BOX	1
2	TC-E-8400001	SEAL RUBBER BAR	1
3	TC-E-8300001	DOOR LOCK	1
4	TC-E-7700125	CABLE LOCK ASSEMBLY	1
5	TC-E-7700027	CABLE LOCK M27X1.5 PG21	2
6	TC-E-7700020	CABLE LOCK HEAD M20X1.5	3
7	TC-E-7202401	ELECTRICAL SUPPLY INDICATING LIGHT	1
8	TC-E-22D2500	DOUBLE SPEED SWITCH	1
9	GB95-6	FLAT WASHER	4
10	GB95-4	FLAT WASHER	3
11	GB93-6	STANDARD SPRING WASHER	4
12	GB93-4	STANDARD SPRING WASHER	3
13	GB91-1.2×12	SLOTTED PIN	2
14	GB882-4×30	PIN SHAFT	2
15	GB818-M6×10-H	CROSS PANHEAD SCREW	4
16	GB818-M4×8-H	CROSS PANHEAD SCREW	2
17	GB818-M4×12-H	CROSS PANHEAD SCREW	1
18	GB6170-M4	HEXANGULAR NUT 1-TYPE	1



ITEM	PART. No	DESCRIPTION.	QT. Y
1	TC-40-8000007	BRUSH	1
2	TC-40-8000006	24INCH CROWBAR	1
3	TC-20-6200002	NYLON COVER	4
4	TC-20-6200001	CUSHION COVERS	4
5	TC-20-6100000	EXTENSION JAW ASSEMBLY	4
6	TC-20-6000004	PIN SHAFT	2
7	TC-20-6000003	ACCESSORY BOX	1
8	TC-10-8200000	CLAMP ASSEMBLY	2
9	TC-10-6100000	TYRE LEVER	1
10	TC-10-6000001	24" CROWBAR	1
11	M10X80-P	EXPANDABLE BOLT M10*80	4
12	GB95-14	FLAT WASHER	4
13	GB95-10	FLAT WASHER	4
14	GB70. 1-M14×35	INNER HEXA CYLINDRICAL SCREW	4
15	GB70. 1-M10×40	INNER HEXA CYLINDRICAL SCREW	4
16	GB5783-M14×50	HEXANGULAR BOLT	4
17	C-54-8000019	20INCH CROWBAR	1
18	C-54-8000003	CROWBAR	1

TC-20-6100000



ITEM	PART. No	DESCRIPTION.	QT. Y
1	TC-20-6110000	EXTENSION JAW ASSEMBLY	1
2	TC-20-6100001	CLAMP	1
3	TC-20-1300009	QUICK CHANGE CLAMPING JAW	1
4	GB70. 1-M10×45	INNER HEXA CYLINDRICAL SCREW	1
5	GB70. 1-M10×40	INNER HEXA CYLINDRICAL SCREW	1