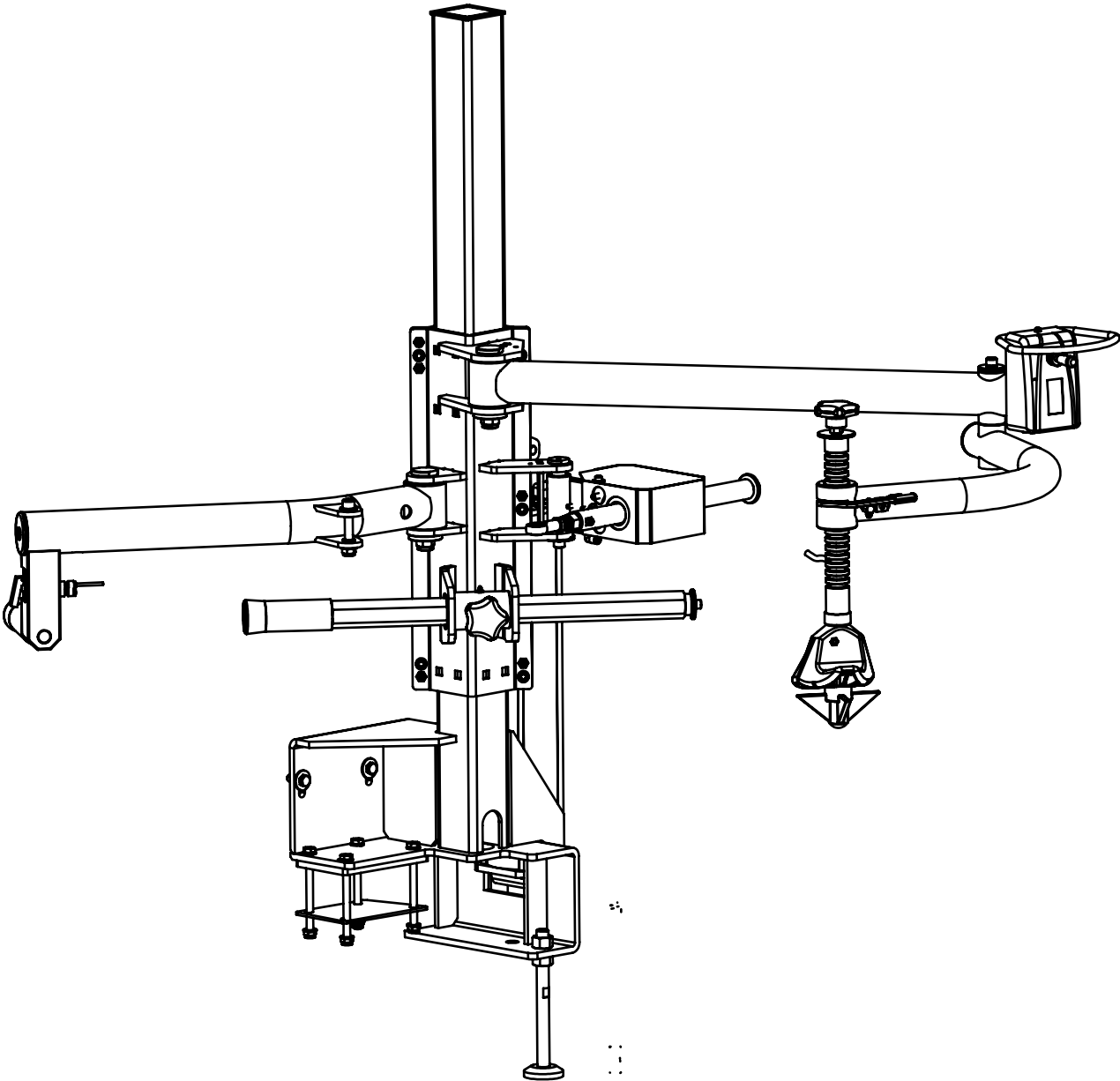
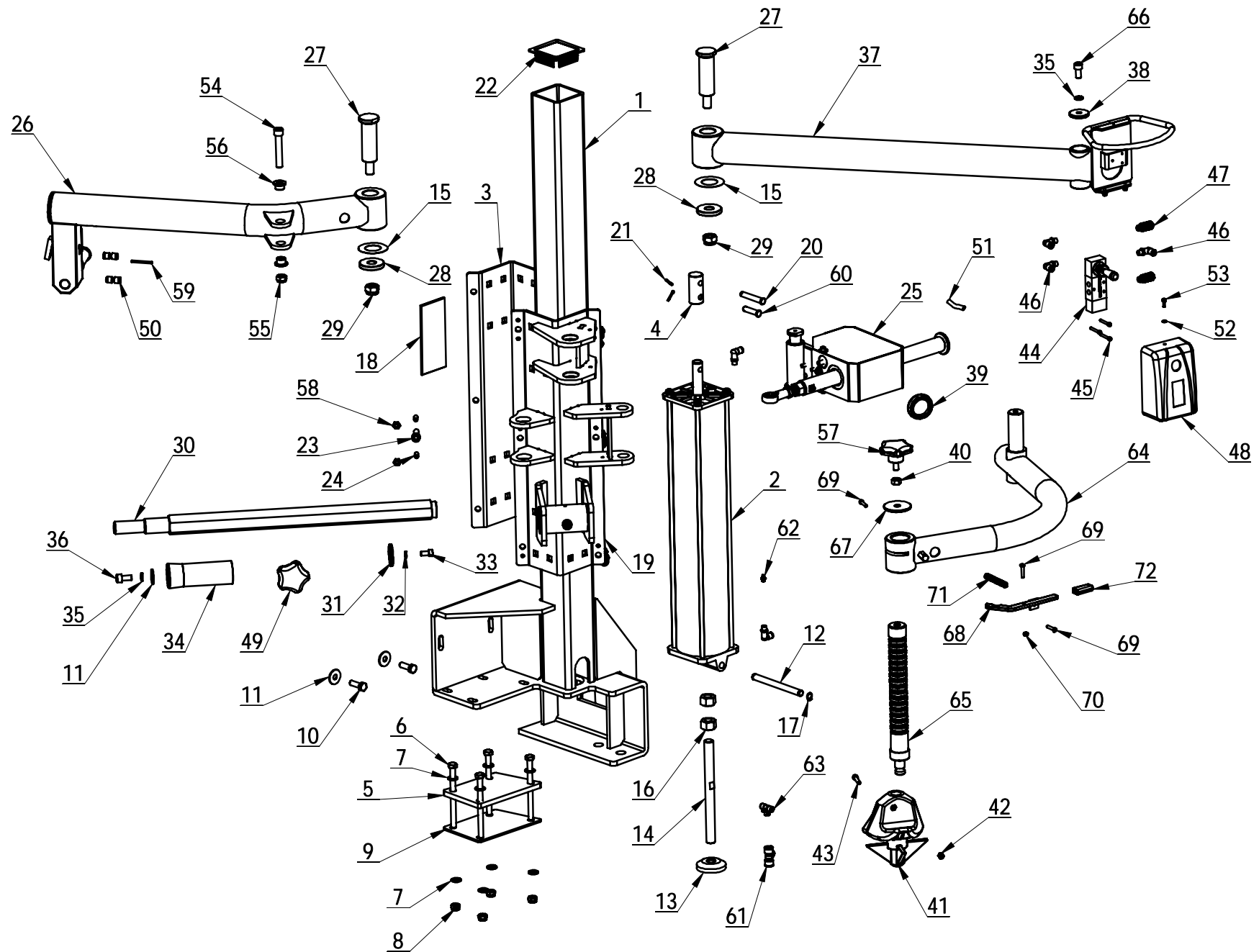


# 390H SPARE PARTS LIST

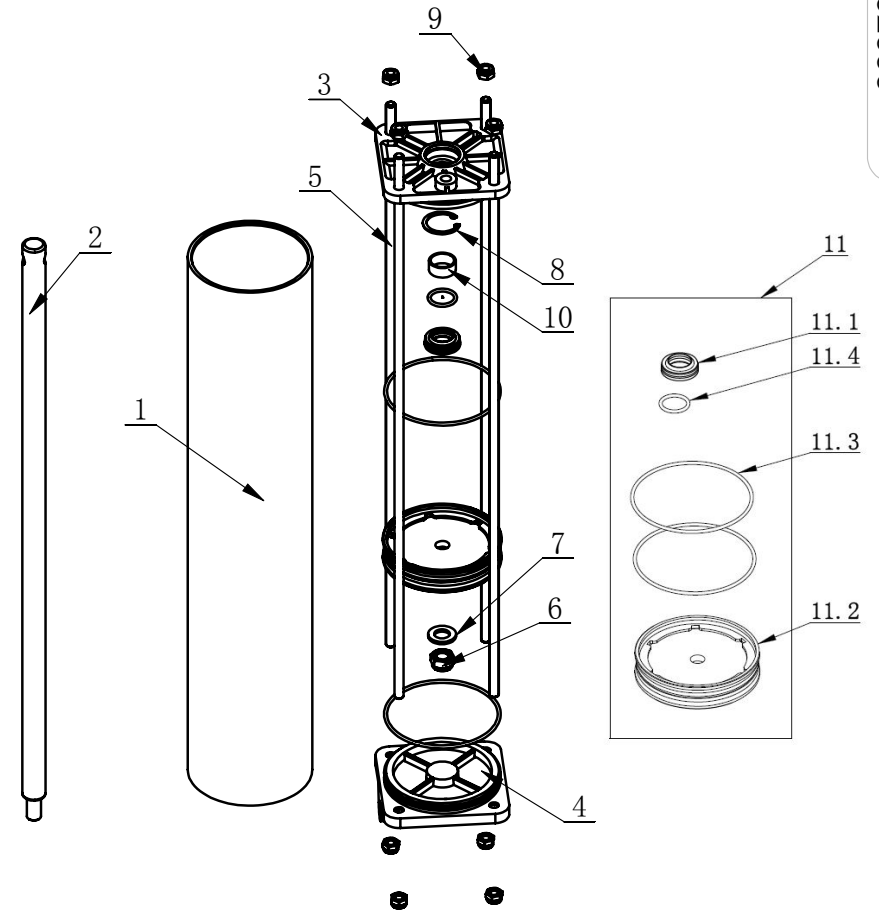


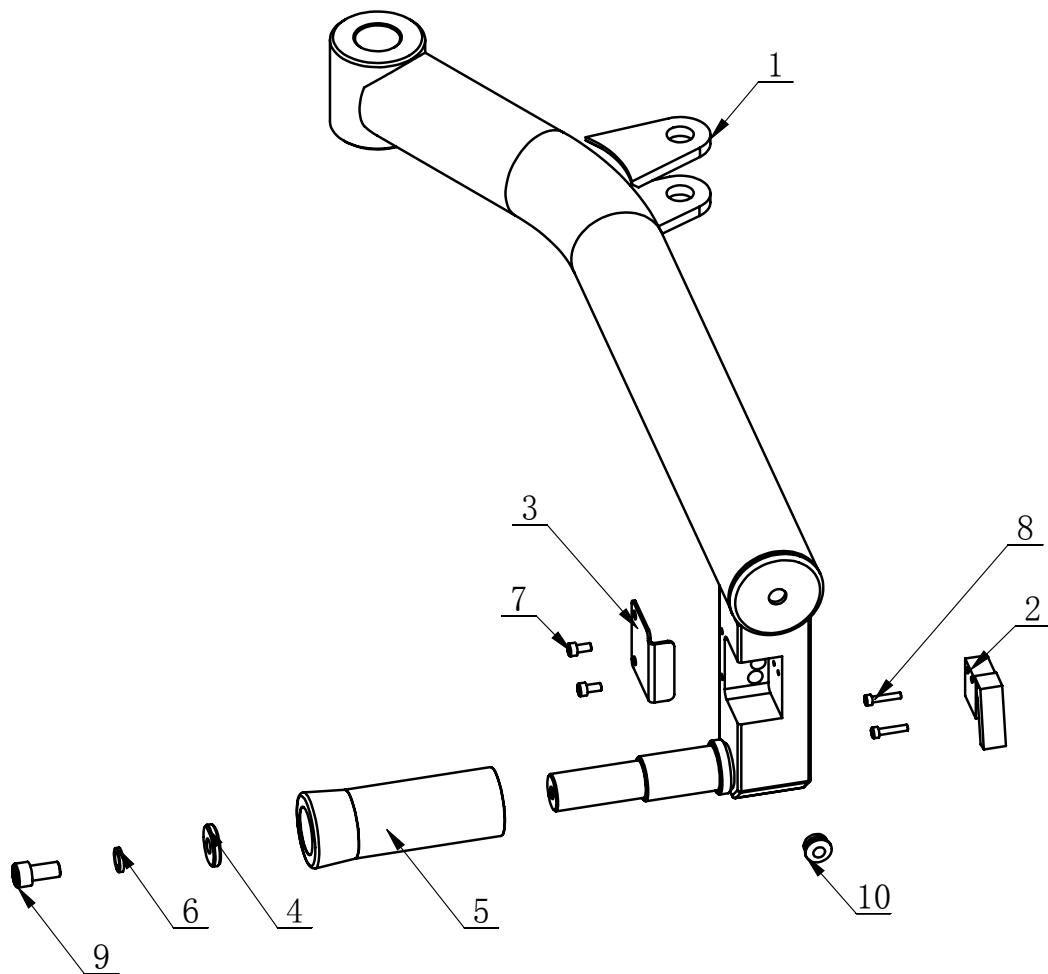


| ITEM | PART. NO          | DESCRIPTION.                                   | QT. Y |
|------|-------------------|--|-------|
| 1    | H-81-2001000      | VERTICAL COLUMN                                | 1     |
| 2    | H-81-2002000      | LIFTING CYLINDER ASSEMBLY                      | 1     |
| 3    | H-80-1220000      | BACK SLIDE PLATE                               | 1     |
| 4    | H-80-1000004      | CONNET SHAFT                                   | 1     |
| 5    | H-30-1000007      | BOTTOM FLAT PLATE                              | 1     |
| 6    | GB5782-M10×130    | HEXANGULAR BOLT                                | 4     |
| 7    | GB95-10           | FLAT WASHER                                    | 8     |
| 8    | GB889. 1-M10      | 1-TYPE PREVAILING TORQUE TYPE HEXAGON LOCK NUT | 10    |
| 9    | H-30-1000008      | PAD PLATE                                      | 1     |
| 10   | GB5783-M10×30     | HEXANGULAR BOLT                                | 2     |
| 11   | GB96. 1-10        | LARGE WASHER A GRADE                           | 3     |
| 12   | H-80-1000007      | CYLINDER SHAFT                                 | 1     |
| 13   | H-80-1000005      | FOUNDATION PLATE                               | 1     |
| 14   | H-80-1000014      | BOLT   | 1     |
| 15   | H-80-1000008      | ADJUSTING WASHER                               | 2     |
| 16   | GB41-M18          | HEXANGULAR NUT                                 | 2     |
| 17   | GB894. 1-12       | SHAFT ELATIC BIG RETAINING RING A-TYPE         | 2     |
| 18   | H-80-1200001      | GUIDE RALL                                     | 8     |
| 19   | H-81-2005000      | FRONT SLIDE PLATE                              | 1     |
| 20   | GB882-10×60       | PIN SHAFT                                      | 1     |
| 21   | GB91-3.2×14       | SLOTTED PIN                                    | 2     |
| 22   | H-80-1000002      | COVER  | 1     |
| 23   | GB70. 1-M10×30    | INNER HEXA CYLINDRICAL SCREW                   | 6     |
| 24   | GB77-M8×16        | INNER HEXA FLAT TERMINUS SET SCREW             | 7     |
| 25   | H-81-2004000A     | LOCK RACK                                      | 1     |
| 26   | H-81-2003000      | SUPPORT  | 1     |
| 27   | H-80-1000001A     | VERTICAL SHAFT                                 | 2     |
| 28   | C-54-1000009      | SHAFT WASHER                                   | 2     |
| 29   | GB889. 1-M16      | 1-TYPE PREVAILING TORQUE TYPE HEXAGON LOCK NUT | 2     |
| 30   | H-80-1500001A     | PRESS SHAFT                                    | 1     |
| 31   | H-80-1500002      | BLOCK WASHER                                   | 1     |
| 32   | GB93-8            | STANDARD SPRING WASHER                         | 1     |
| 33   | GB70. 1-M8×16     | INNER HEXA CYLINDRICAL SCREW                   | 1     |
| 34   | H-30-1000003      | PRESS CONE                                     | 1     |
| 35   | GB93-10           | STANDARD SPRING WASHER                         | 2     |
| 36   | GB70. 1-M10×20-LH | INNER HEXA CYLINDRICAL SCREW                   | 1     |
| 37   | H-80-1410000      | SUPPORT ARM                                    | 1     |
| 38   | H-10-1000005      | WASHER   | 1     |
| 39   | H-10-1000008      | ROUND COVER                                    | 1     |
| 40   | GB41-M10          | HEXANGULAR NUT                                 | 1     |

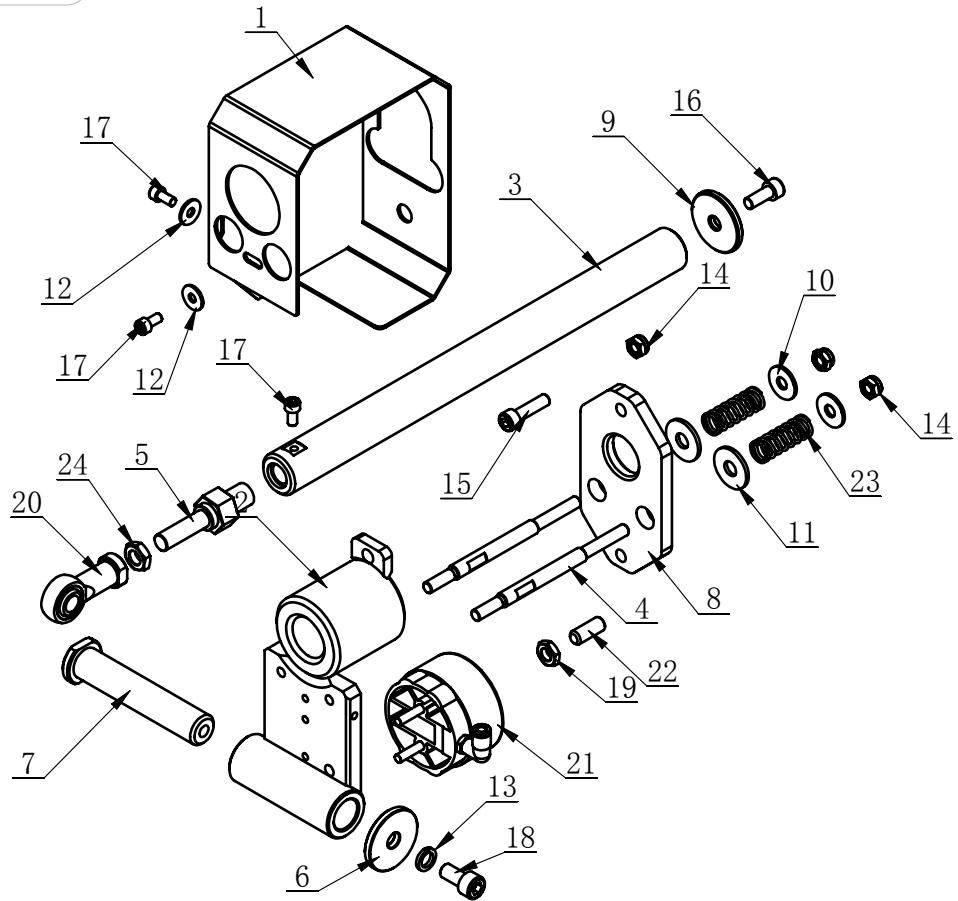
| ITEM | PART NO.        | DESCRIPTION.                                   | QT. Y |
|------|-----------------|--|-------|
| 41   | H-80-1001000    | PRESS BLOCK                                    | 1     |
| 42   | GB41-M6         | HEXANGULAR NUT                                 | 1     |
| 43   | GB70. 1-M6× 30  | INNER HEXA CYLINDRICAL SCREW                   | 1     |
| 44   | 4H230-06A       | CONTROL VALVE                                  | 1     |
| 45   | GB70. 1-M4× 30  | INNER HEXA CYLINDRICAL SCREW                   | 3     |
| 46   | FPL 6-01        | MALE ELBOW                                     | 5     |
| 47   | FSK 01          | PLASTIC PARTICLE SILENCER                      | 2     |
| 48   | H-10-1000020    | HANDLE VALVE COVER                             | 1     |
| 49   | H-80-1003000    | HAND OF FIVE STARS                             | 1     |
| 50   | FPG 6-4         | DIFFERENT DIA OF UNION STRAIGHT                | 2     |
| 51   | PU-0600         | PU HOSE C Φ6X4                                 | 1     |
| 52   | GB95-4          | FLAT WASHER                                    | 3     |
| 53   | GB70. 1-M4× 12  | INNER HEXA CYLINDRICAL SCREW                   | 3     |
| 54   | GB70. 1-M12× 70 | INNER HEXA CYLINDRICAL SCREW                   | 1     |
| 55   | GB889. 1-M12    | LOCK NUT                                       | 1     |
| 56   | H-81-2000008    | SPACER BUSH                                    | 2     |
| 57   | H-80-1000013    | THE STAR HANDLE M10-20                         | 1     |
| 58   | GB6172. 1-M8    | HEXANGULAR THIN NUT                            | 7     |
| 59   | PU-0400         | PU HOSE C Φ6X4                                 | 1     |
| 60   | GB882-10× 40    | PIN SHAFT                                      | 1     |
| 61   | FPT 6-8-8       | DIFFERENT DIA OF UNION TEE                     | 1     |
| 62   | TC-10-8400006   | OIL CUP M6                                     | 1     |
| 63   | FPE 6           | UNION TEE                                      | 1     |
| 64   | H-80-1330100A   | ROTATION ARM                                   | 1     |
| 65   | H-80-1330003    | PRESSURE SCREW                                 | 1     |
| 66   | GB70. 1-M10× 20 | INNER HEXA CYLINDRICAL SCREW                   | 1     |
| 67   | H-80-1330002    | WASHER   | 1     |
| 68   | H-80-1330200    | SNAP-GAUGE                                     | 1     |
| 69   | GB70. 2-M5× 25  | INNER HEXA CYLINDRICAL ROUND HEAD SCREW        | 3     |
| 70   | GB889. 1-M5     | 1-TYPE PREVAILING TORQUE TYPE HEXAGON LOCK NUT | 1     |
| 71   | C-93-1700006    | SPRING   | 1     |
| 72   | H-80-1000010    | COVER  | 1     |

| ITEM | PART. No             | DESCRIPTION.                                   | 数量 |
|------|----------------------|--|----|
| 1    | H-81-2002001         | CYLINDER                                       | 1  |
| 2    | H-81-2002002         | PISTON ROD                                     | 1  |
| 3    | H-10-1500002         | CYLINDER FRONT COVER                           | 1  |
| 4    | H-10-1500005         | CYLINDER BEAR COVER                            | 1  |
| 5    | H-81-2002003         | BOLT   | 7  |
| 6    | GB889. 1-M12         | LOCK NUT                                       | 1  |
| 7    | GB95-12              | FLAT WASHER                                    | 1  |
| 8    | GB893. 1-30          | RETAINING RING                                 | 1  |
| 9    | GB889. 1-M8          | 1-TYPE PREVAILING TORQUE TYPE HEXAGON LOCK NUT | 8  |
| 10   | GB12613-23 × 20 × 10 | BEARING-SLIDE                                  | 1  |
| 11   | H-10-1590000         | CYCLINDER SEALING PARTS ASSEMBLY               | 1  |
| 11.1 | CT-Y-0160007         | SEAL-ROD, CYLNDR                               | 1  |
| 11.2 | H-10-1500001         | PISTON   | 1  |
| 11.3 | GB3452. 1-95 × 2. 65 | HYDRAULIC-PNEUMATIC RUBBER O-RING G TYPE       | 2  |
| 11.4 | GB3452. 1-20 × 2. 65 | RUBBER O-RING                                  | 1  |





| ITEM | PART. No      | DESCRIPTION.                 | QT. Y |
|------|---------------|------------------------------|-------|
| 1    | H-81-2003100  | ARM                          | 1     |
| 2    | H-81-2003002  | HAND CONTROL VALVE           | 1     |
| 3    | H-81-2003001  | COVER                        | 1     |
| 4    | GB96.1-10     | WASHER                       | 1     |
| 5    | H-30-1000003  | PRESS CONE                   | 1     |
| 6    | GB93-10       | STANDARD SPRING WASHER       | 1     |
| 7    | GB70.1-M5×10  | INNER HEXA CYLINDRICAL SCREW | 2     |
| 8    | GB70.1-M4×20  | INNER HEXA CYLINDRICAL SCREW | 2     |
| 9    | GB70.1-M10×20 | INNER HEXA CYLINDRICAL SCREW | 1     |
| 10   | C-71-1000027  | HELPER RUBBE PLUG            | 1     |



| ITEM | PART. No       | DESCRIPTION.                                   | QT. Y |
|------|----------------|--|-------|
| 1    | H-81-2004200   | COVER  | 1     |
| 2    | H-81-2004100A  | SLITHER ARM                                    | 1     |
| 3    | H-81-2004008   | SHAFT LEVER                                    | 1     |
| 4    | H-81-2004007   | SCREW  | 2     |
| 5    | H-81-2004006   | SCREW  | 1     |
| 6    | H-81-2004004   | PRESS WASHER                                   | 1     |
| 7    | H-81-2004002   | SHAFT LEVER                                    | 1     |
| 8    | H-81-2004001A  | LOCK PLATE                                     | 1     |
| 9    | H-80-1500002   | BLOCK WASHER                                   | 1     |
| 10   | GB96.1-8       | LARGE WASHER A GRADE                           | 2     |
| 11   | GB96.1-10      | large washer A grade                           | 2     |
| 12   | GB96.1-6       | LARGE WASHER A GRADE                           | 2     |
| 13   | GB93-10        | STANDARD SPRING WASHER                         | 1     |
| 14   | GB889.1-M8     | 1-TYPE PREVAILING TORQUE TYPE HEXAGON LOCK NUT | 3     |
| 15   | GB70.1-M8×30   | INNER HEXA CYLINDRICAL SCREW                   | 1     |
| 16   | GB70.1-M8×20   | INNER HEXA CYLINDRICAL SCREW                   | 1     |
| 17   | GB70.1-M6×12   | INNER HEXA CYLINDRICAL SCREW                   | 3     |
| 18   | GB70.1-M10×20  | INNER HEXA CYLINDRICAL SCREW                   | 1     |
| 19   | GB6173-M10×1.0 | HEXA THIN NUT                                  | 1     |
| 20   | CT-XD-1000007  | BEARING JOINTS                                 | 1     |
| 21   | C-77-1500000   | LOCKING CYLINDER ASSY                          | 1     |
| 22   | C-71-1000029   | INNER HEXA FLAT TERMINUS SET SCREW             | 1     |
| 23   | C-71-1000018   | PRESS SPRING                                   | 2     |
| 24   | GB6172.1-M12   | HEXANGULAR THIN NUT                            | 1     |