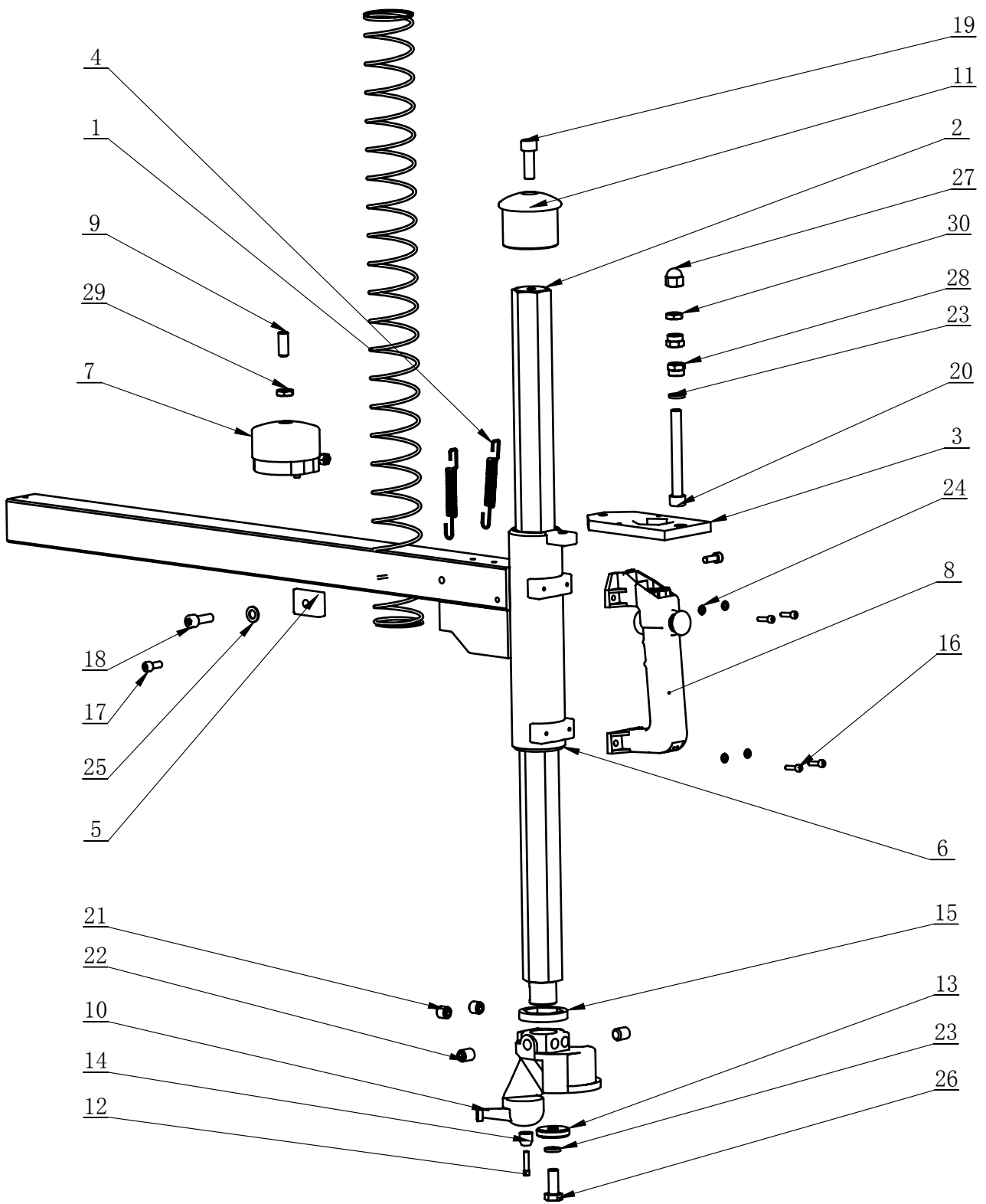
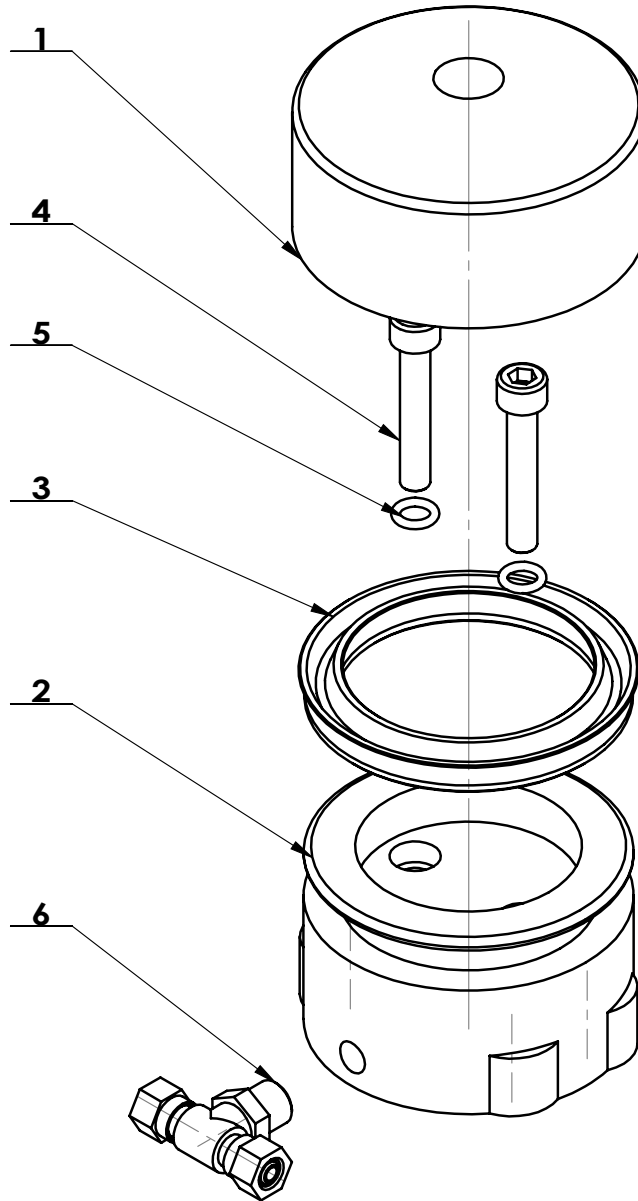


ITEM	PART. No	DESCRIPTION.	QT. Y
1	C-7C-1100000	BODY WELDING	1
2	CT-B-4000000	BEAD BREAKING ARM ASSEMBLY	1
3	CT-C-3100000	BEAD BREAKER BLADE	1
4	CT-LS-2000000	BEAD BREAKER CYLINDER ASSEMBLY	1
5	CT-J-3100000	GEARBOX ASSEMBLY	1
6	CT-DJ-0212112	MOTOR ASSEMBLY	1
7	CT-XD-3000000	PULL-OUT CYLINDER D80X80	1
8	CT-Q-1000000	AIR GUIDER (LC MODEL)	1
9	C-7C-1000001	PROTECTIVE COVER	1
10	C-6C-1000001	SIDE PANEL	1
11	C-7C-1000003	PROTECTIVE PLATE	1
12	C-7C-1000004	RUBBER PLATE	1
13	CT-C-3000001	ROTATION SPINDLE	1
14	C-10-1000003	RUBBER PLATE	1
15	C-54-1300011	HANDLE COVER	1
16	CT-B-3000001	SPRING	1
17	C-90-1000012	PROTECTIVE ROD	1
18	GT885. 03. 17	CONNECTION ROD	1
19	TB-P-0100005	WASHER	1
20	C-70-1000013	WASHER $\Phi 30 \times \Phi 10 \times 15$	2
21	C-70-1000005	BOLT	2
22	C-01-100000B	CIRCLIP	1
23	GT895. 00. 20	PLUG A	2
24	GT895. 00. 18	PLUG C	2
25	GT895. 00. 19	PLUG B	1
26	C-70-1000004	PIN SHAFT	1
27	C-70-1000007	PROTECTIVE COVER	1
28	C-10-1000001	RIM SUPPORT	1
29	C-54-1000005	RUBBER FOOT	4
30	CT-Q-0000001	CLAMP RING	1
31	CT-Y-0100001	PRESS COVER	1
32	C-01-1000004	CABLE CONNECTOR	1
33	GB/5781-M10×160	HEXANGULAR BOLT	2
34	GB5780-M10X200	HEXANGULAR BOLT	4
35	GB1096-C12×8×45	COMMON FLAT KEY	1
36	GB955-14	WAVE-FORM SPRING WASHER	1
37	GB85-M6×12	SQUARE HEAD CYLINDRICAL TERMINUS SET SCREW	1
38	GB889. 1-M10	1-TYPE PREVAILING TORQUE TYPE HEXAGON LOCK NUT	2
39	GB96. 1-10	LARGE WASHER A GRADE	11
40	GB5782-M10×50	HEXANGULAR BOLT	1
41	GB41-M10	HEXANGULAR NUT	16
42	GB41-M8	HEXANGULAR NUT	2
43	GB5782-M8×45	HEXANGULAR BOLT	2
44	GB95-10	FLAT WASHER	16
45	GB93-10	STANDARD SPRING WASHER	2

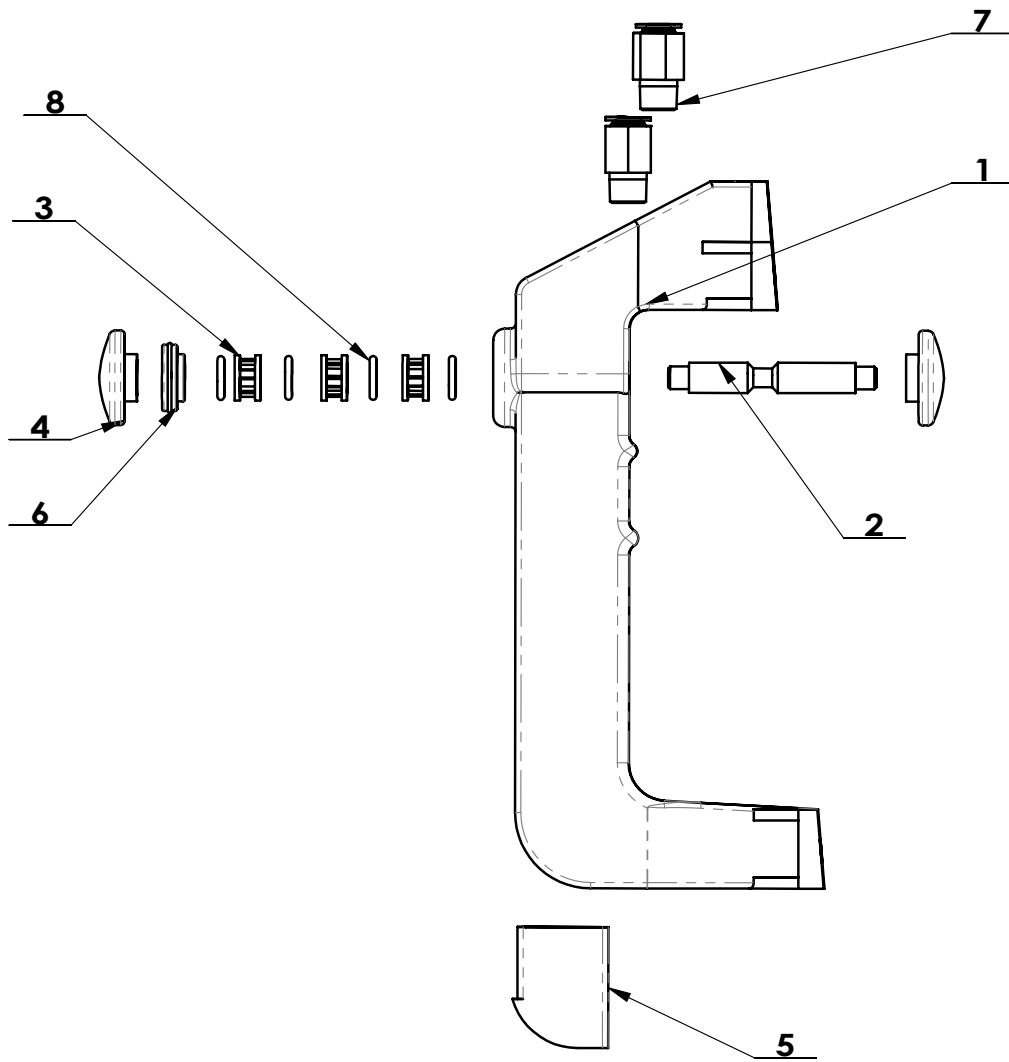
ITEM	PART. No	DESCRIPTION.	QT. Y
46	GB70. 1-M10×25	INNER HEXA CYLINDRICAL SCREW	2
47	GB93-6	STANDARD SPRING WASHER	9
48	GB70. 1-M6×35	SCREW M6X35	2
49	GB95-6	FLAT WASHER	11
50	GB41-M6	HEXANGULAR NUT	2
51	GB70. 1-M6×12	INNER HEXA CYLINDRICAL SCREW	5
52	GB894. 1-12	SHAFT ELATIC BIG RETAINING RING A-TYPE	2
53	GB818-M5×10-H	CROSS PANHEAD SCREW	4
54	GB41-M5	HEXANGULAR NUT	2
55	GB70. 1-M6×16	INNER HEXA CYLINDRICAL SCREW	10
56	C-01-1500000	INFLATING GUN ASSY	1
57	C-7C-1200000	HORIZONTAL ARM	1
58	C-70-1000008	WASHER	2
59	C-70-1000009	ROTATION SHAFT	1
60	GB5781-M16×30	HEXANGULAR BOLT	2
61	CT-F-3222121	AIR REGULATOR ASSEMBLY	1
62	GB818-M5×12-H	CROSS PANHEAD SCREW	2
63	C-70-1000010	PULL-OUT SHAFT	1
64	GB894. 1-16	SHAFT ELATIC BIG RETAINING RING A-TYPE	2
65	CT-D-4100000	PEDAL ASSEMBLY	1
66	CT-Y-1100000	TURNTABLE ASSEMBLY	1
67	GB70. 1-M12×30	INNER HEXA CYLINDRICAL SCREW	1
68	C-70-1000011	SEALED COVER	1
69	GB6172. 1-M14	HEXANGULAR THIN NUT	2
70	GB/T 77-M14×42	INNER HEXA CYLINDRICAL TERMINUS SET SCREW	2
71	GB889. 1-M18X1.5	1-TYPE PREVAILING TORQUE TYPE HEXAGON LOCK NUT	1
72	GB882-18×100	PIN SHAFT	1
73	C-70-1000020	POWER CABLE ASSEMBLY	1
74	CT-DJ-0000007	BELT A-25	1
75	C-70-1000006	HELPER RUBBE PLUG	4
76	C-70-1000014	STOP-UP	1
77	C-60-1000003	CUSHION BUSHING	1



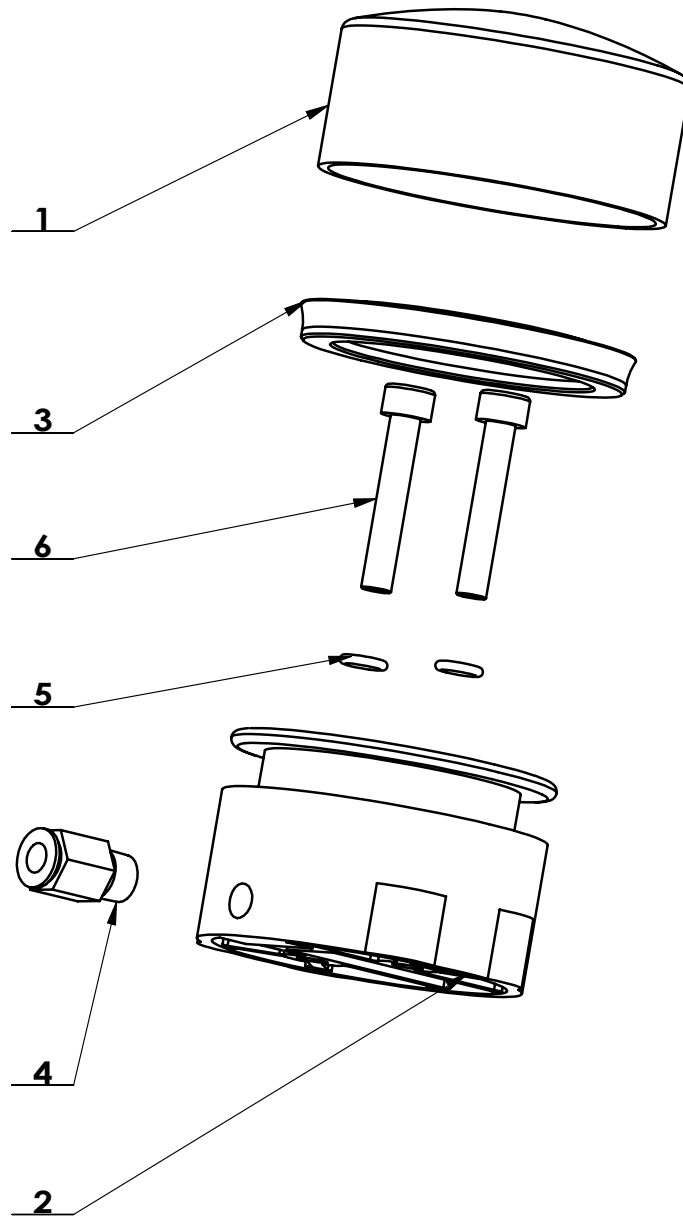
ITEM	PART. No	DESCRIPTION.	QT. Y
1	C-70-1220001	VERTICAL SHAFT SPRING	1
2	C-70-1220002	HEXAGON SHAFT	1
3	C-70-1220003	HEXAGON LOCK PLATE	1
4	C-70-1220004	SPRING	2
5	C-70-1220005	POSITIONING BLOCK	1
6	C-70-1221000	HORIZONTAL ARM	1
7	C-70-1223000	LOCKING CYLINDER ASSY	1
8	C-70-1224000	HANDLE CONTROLING VALVE	1
9	C-70-1200010	INNER HEXA FLAT TERMINUS SET SCREW	1
10	C-31-1300013	DEMOUNTING HEAD	1
11	C-54-1300001	VERTICAL SHAFT COVER	1
12	C-54-1300006	ROLLER BOLT	1
13	C-54-1300008	PRESS WASHER	1
14	C-54-1300009	ROLLER	1
15	C-54-1300007	SHOCK ABSORBER WASHER	1
16	GB70. 1-M4×16	INNER HEXA CYLINDRICAL SCREW	4
17	GB70. 1-M6×16	INNER HEXA CYLINDRICAL SCREW	2
18	GB70. 1-M8×25	INNER HEXA CYLINDRICAL SCREW	1
19	GB70. 1-M10×30	INNER HEXA CYLINDRICAL SCREW	1
20	GB70. 1-M10×90	INNER HEXA CYLINDRICAL SCREW	1
21	GB77-M12×12	INNER HEXA FLAT TERMINUS SET SCREW	2
22	GB77-M12×16	INNER HEXA FLAT TERMINUS SET SCREW	2
23	GB93-10	STANDARD SPRING WASHER	2
24	GB95-4	FLAT WASHER	4
25	GB95-8	FLAT WASHER	1
26	GB5781-M10×25	HEXANGULAR BOLT	1
27	GB802-M10	CAP NUT	1
28	GB889. 1-M10	1-TYPE PREVAILING TORQUE TYPE HEXAGON LOCK NUT	2
29	GB6173-M10×1.0	HEXA THIN NUT	1
30	GB6172. 1-M10	HEXANGULAR THIN NUT	1



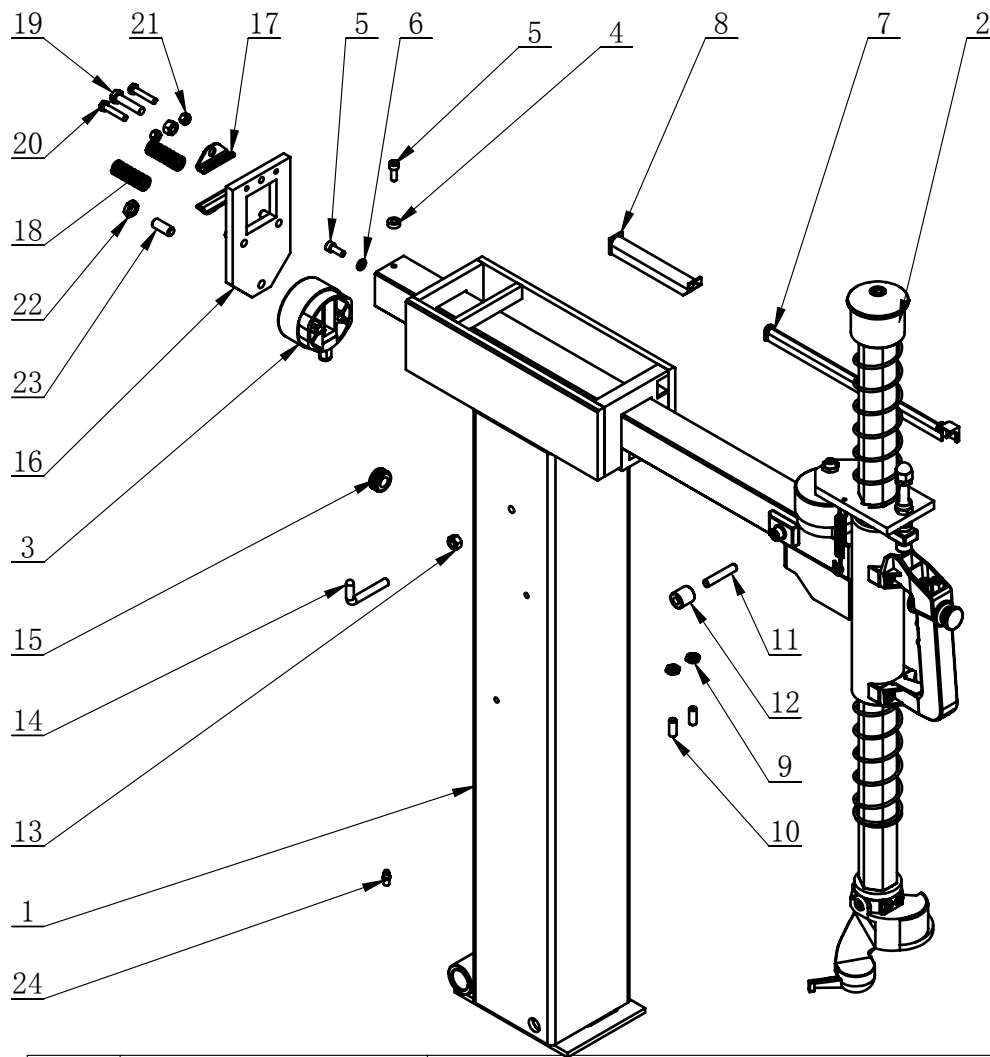
ITEM	PART. No	DESCRIPTION.	QT. Y
1	C-70-1223001	LOCK TURNTABLE CYLINDER HEAD	1
2	C-70-1223002	LOCK TURNTABLE CYLINDER HOUSING	1
3	C-70-1223003	Y-RING	1
4	GB70. 1-M6×35	INNER HEXA CYLINDRICAL SCREW	2
5	GB3452. 1-6×1.8-G	O-RING G TYPE	2
6	PBS 6-01	MALE BRANCH TEE NUT	1



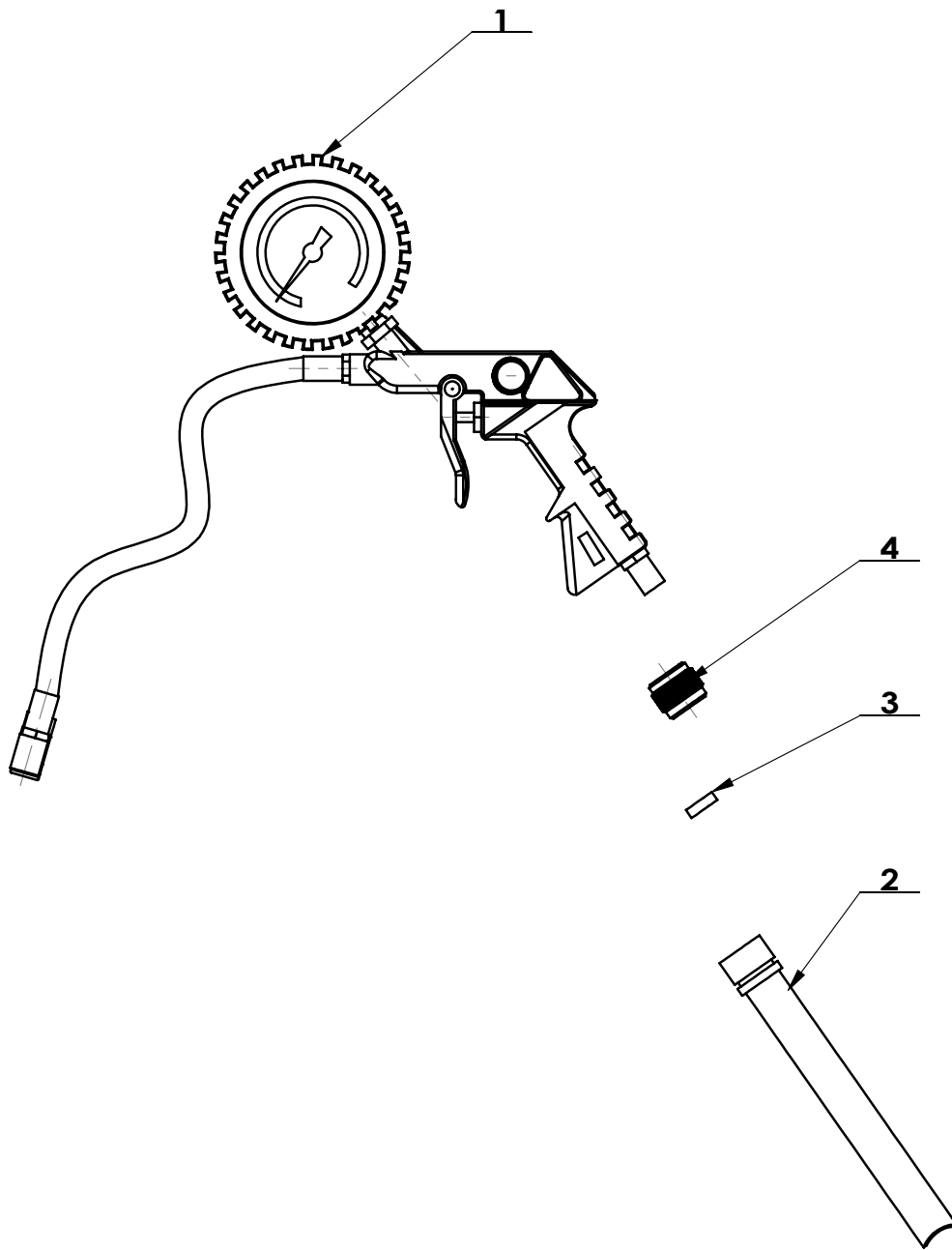
ITEM	PART. No	DESCRIPTION.	QT. Y
1	C-70-1224001	HANDLE CONTROL VALVE	1
2	C-70-1224002	VALVE ROD	1
3	C-70-1224003	VALVE SPACER	3
4	C-70-1224004	FRONT COVER	2
5	C-70-1224005	REAR COVER	1
6	C-70-1224006	FRONT SEALING COVER	1
7	FPC 6-01	MALE STRAIGHT	2
8	GB3452.1-8×1.8-G	O-RING G TYPE	4



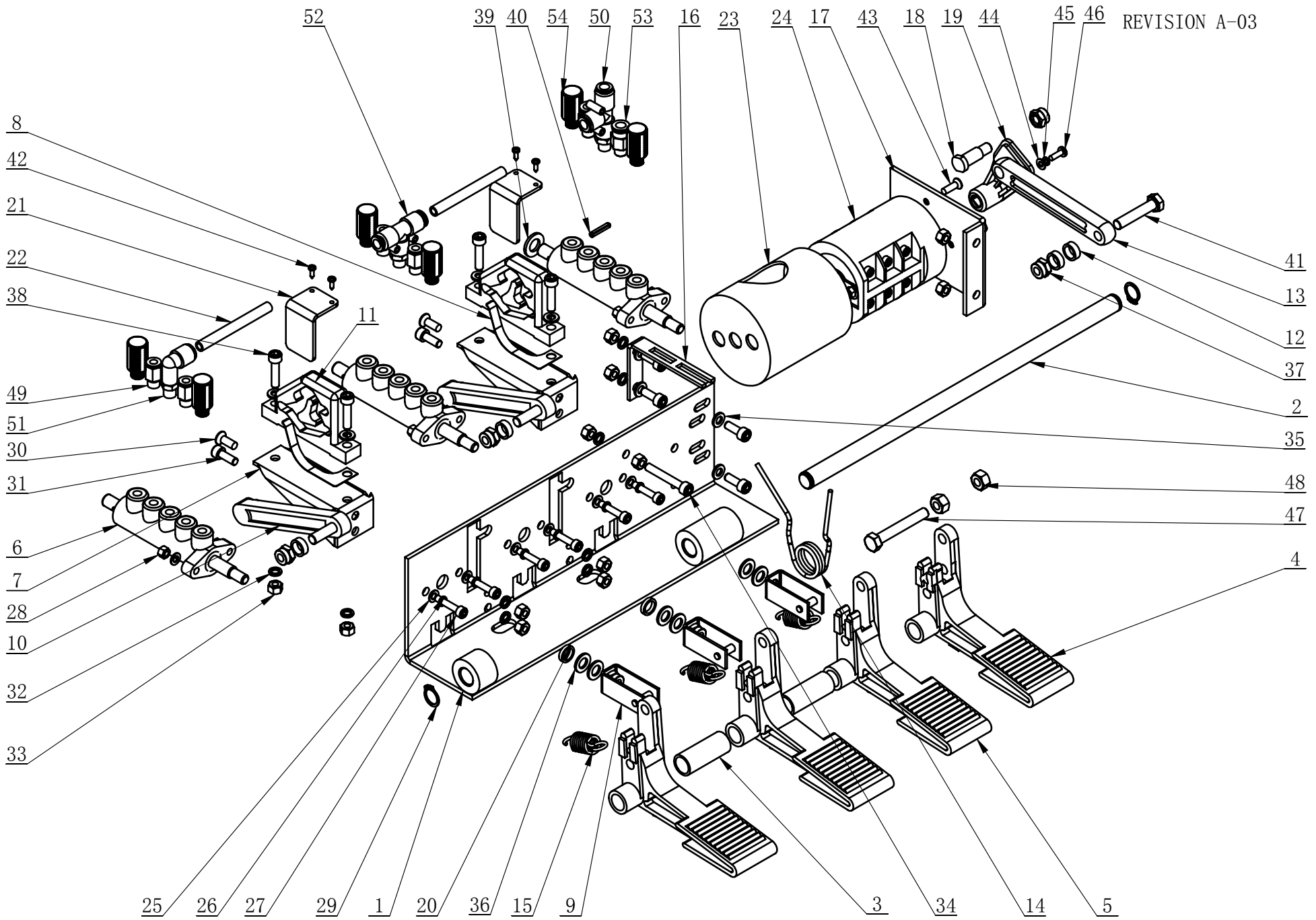
ITEM	PART. No	DESCRIPTION.	QT. Y
1	C-70-1223001	LOCK TURNTABLE CYLINDER HEAD	1
2	C-70-1223002	LOCK TURNTABLE CYLINDER HOUSING	1
3	C-70-1223003	Y-RING	1
4	FPC 6-01	MALE STRAIGHT	1
5	GB3452. 1-6×1.8-G	O-RING G TYPE	2
6	GB70. 1-M6×35	INNER HEXA CYLINDRICAL SCREW	2



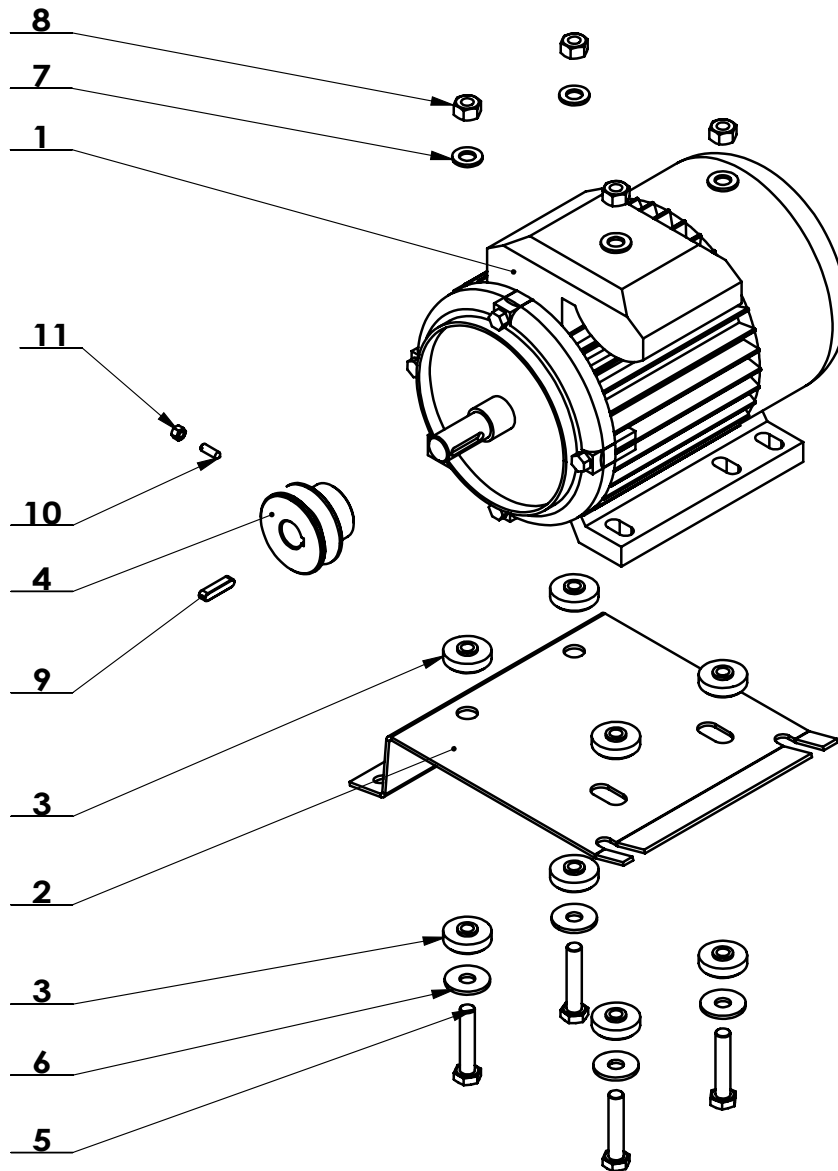
ITEM	PART. No	DESCRIPTION.	QT. Y
1	C-7C-1210000	VERTICAL COLUMN	1
2	C-70-1220000	HORIZONTAL ARM	1
3	C-70-1240000	LOCKING CYLING ASSY	1
4	C-70-1200001	SPACER	1
5	GB70. 1-M6×16	INNER HEXA CYLINDRICAL SCREW	2
6	GB95-6	FLAT WASHER	1
7	C-70-1200003	PIPE GUIDER	1
8	C-70-1200004	PIPE GUIDER	1
9	GB6172. 1-M8	HEXANGULAR THIN NUT	2
10	GB77-M8×20	INNER HEXA FLAT TERMINUS SET SCREW	2
11	C-70-1200005	SUPPORT SHAFT	1
12	C-70-1200006	ROTATING SPACER	1
13	GB41-M8	HEXANGULAR NUT	2
14	C-60-1000002	INFLATING GUN HOOK	1
15	C-70-1200009	STOP-UP	1
16	C-70-1230000	SQUARE LOCK PLATE	1
17	C-70-1200008	SLIDER	2
18	C-70-1200002	PRESS SPRING	2
19	GB5781-M8×35	HEXANGULAR BOLT	1
20	GB5781-M6×30	HEXANGULAR BOLT	2
21	GB41-M6	HEXANGULAR NUT	2
22	GB6172. 1-M10	HEXANGULAR THIN NUT	1
23	C-70-1200010	INNER HEXA FLAT TERMINUS SET SCREW	1
24	c-90-1200004	OIL CUP	1



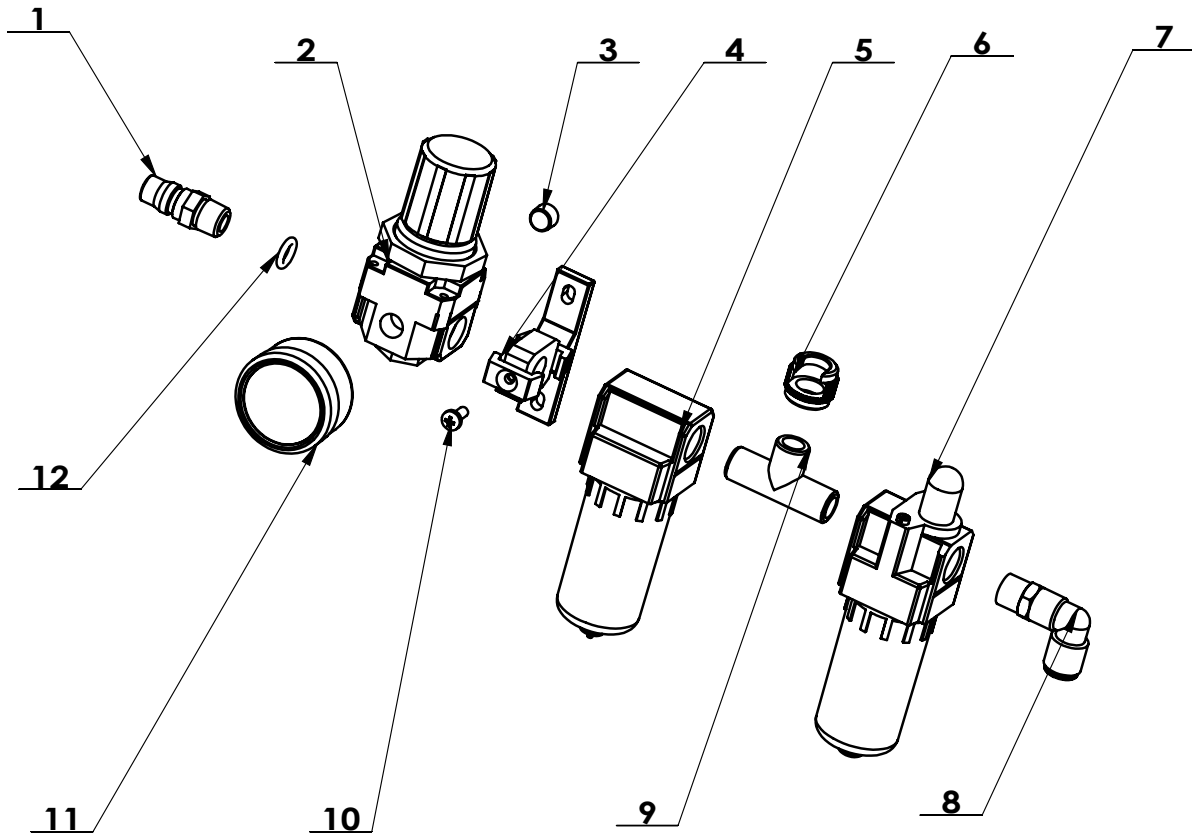
ITEM	PART. No	DESCRIPTION.	QT. Y
1	C-01-1500001	INFLATING GUN	1
2	C-01-1500002	INFLATION HOSE	1
3	C-01-1500003	RING D13XD7X4	1
4	C-01-1500004	OPEN NUT	1



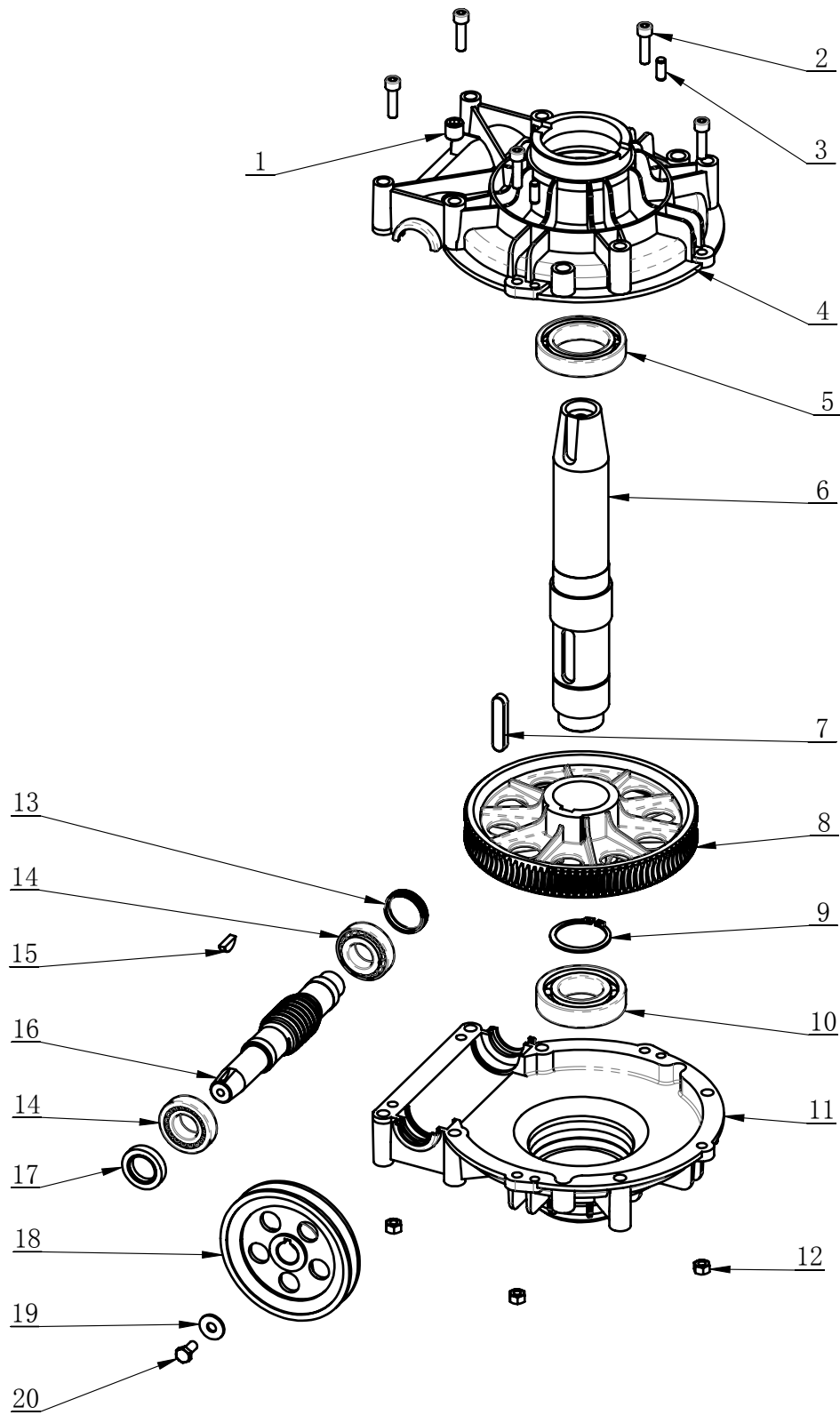
ITEM	PART. No	DESCRIPTION.	QT. Y
1	CT-D-4110000	PEDAL SUPPORT WELDING	1
2	CT-D-4100001	BOTTOM SHAFT	1
3	CT-D-2100001	SPACER	2
4	CT-D-2100006	PEDAL	1
5	CT-D-2100007	PEDAL	3
6	CT-D-2140000	VALVE	3
7	CT-D-2120000	CAM BRACKET WELDING	2
8	CT-D-2100004	SPRING PLATE	2
9	CT-D-2130000	BRACKET	3
10	CT-D-1100008		2
11	CT-D-1100009	CAM	2
12	CT-D-2100005	SPACER	4
13	CT-D-2100011	CONNECTION ROD	1
14	CT-D-2100002	TORSION SPRING	1
15	CT-D-2100003	SPRING	3
16	CT-D-2100010	TORSION SPRING BRACKET	1
17	CT-D-2100008	SWITCH SUPPORT	1
18	CT-D-2100012	ROTATION SHAFT	1
19	CT-D-1100010	REVERSE LEVER	1
20	CT-D-1100016	SPACER	2
21	CT-D-1100011	CAM BAFFLE PLATE	2
22	CT-D-2100013	HOSE	2
23	CT-D-1100014	SWITCH COVER	1
24	CT-D-1100018	SWITCH	1
25	GB95-5	FLAT WASHER	12
26	GB93-5	STANDARD SPRING WASHER	6
27	GB70. 1-M5×25	INNER HEXA CYLINDRICAL SCREW	6
28	GB41-M5	HEXANGULAR NUT	6
29	GB894. 1-14	SHAFT ELATIC BIG RETAINING RING A-TYPE	2
30	GB819. 1-M6×16-H	CROSS COUNTERSUNK SCREW STEEL 4.8 GRADE	2
31	GB70. 1-M6×16	INNER HEXA CYLINDRICAL SCREW	6
32	GB93-6	STANDARD SPRING WASHER	11
33	GB41-M6	HEXANGULAR NUT	14
34	GB70. 1-M6×40	INNER HEXA CYLINDRICAL SCREW	1
35	GB95-6	FLAT WASHER	8
36	GB95-8	FLAT WASHER	6
37	GB889. 1-M8	1-TYPE PREVAILING TORQUE TYPE HEXAGON LOCK NUT	6
38	GB70. 1-M6×25	INNER HEXA CYLINDRICAL SCREW	4
39	GB95-10	FLAT WASHER	1
40	GB879. 1-4×20	ELASTIC CYLINDRICAL PIN, HEAVY	1
41	GB5781-M8×40	HEXANGULAR BOLT	1
42	GB845-ST2. 9×9.5 H C	CROSS PANHEAD TAPPING SCREW	4
43	GB819. 1-M5×16-H	CROSS COUNTERSUNK SCREW STEEL 4.8 GRADE	4
44	GB95-4	FLAT WASHER	1
45	GB93-4	STANDARD SPRING WASHER	1
46	GB818-M4×12-H	CROSS PANHEAD SCREW	1
47	GB5782-M8×55	HEXANGULAR BOLT	1
48	GB41-M8	HEXANGULAR NUT	2
49	FPC 6-01	MALE STRAIGHT	4
50	FPD 8-01	MALE RUN TEE	1
51	FPL 8-01	INSERT ELBOW Φ8, R1/8	1
52	FPB 8-01	MALE BRANCH TEE	1
53	FPC 8-01	MALE STRAIGHT	2
54	FSK 01	PLASTIC PARTICLE SILENCER	6



ITEM	PART. No	DESCRIPTION.	QT. Y
1	CT-DJ-0012112	MOTOR	1
2	CT-DJ-0000001	MOTOR SUPPORT	1
3	CT-DJ-0000002	RUBBER WASHER	8
4	CT-DJ-0000003	MOTOR BELT PULLEY	1
5	GB5781-M10×50	HEXANGULAR BOLT	4
6	GB96. 1-10	LARGE WASHER A GRADE	4
7	GB95-10	FLAT WASHER	4
8	GB41-M10	HEXANGULAR NUT	4
9	GB1096-6×6×28	COMMON FLAT KEY	1
10	GB71-M5×16	SLOTTED CONIC HEAD SET SCREW	1
11	GB41-M5	HEXANGULAR NUT	1



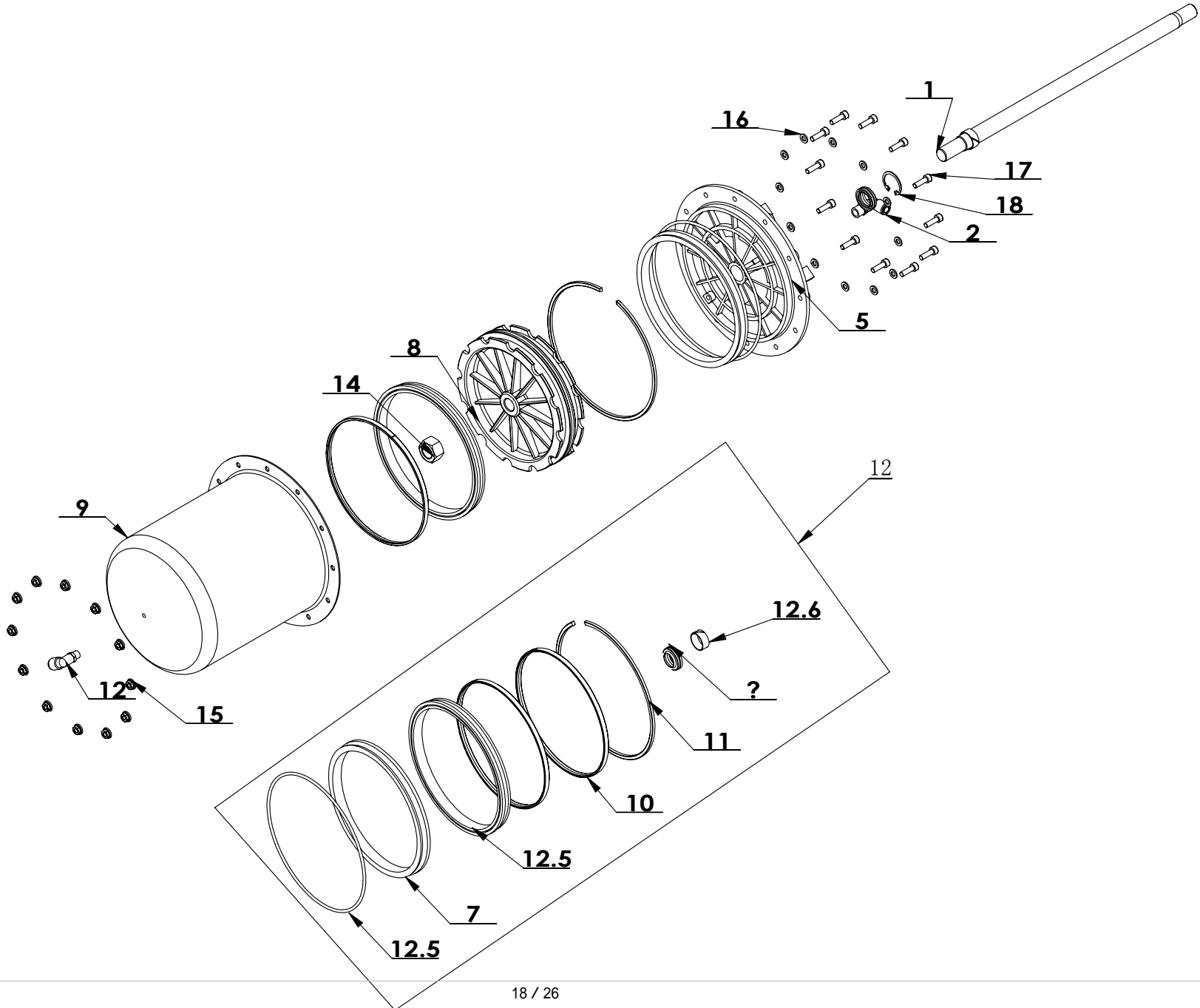
ITEM	PART. No	DESCRIPTION.	QT. Y
1	C-01-100000D	AIR SUPPLY CONNECTOR	1
2	H-40-1600001	PRESSURE ADJUST VALVE	1
3	FPS 01	PLUG MAIN BLOCK	1
4	CT-F-3000005	BRACKET	1
5	CT-F-3000001	WATER CUP	1
6	C-01-1500004	OPEN NUT	1
7	CT-F-3000002	OIL CUP	1
8	FPL 8-02	INSERT ELBOW $\Phi 8, R1/4$	1
9	PEH 02-02	FAMALE UNION TEE	1
10	GB818-M4×10-H	CROSS PANHEAD SCREW	2
11	CT-F-3000004	PRESSURE GAUGE	1
12	GB3452.1-8×2.65-A	O-RING G TYPE	1



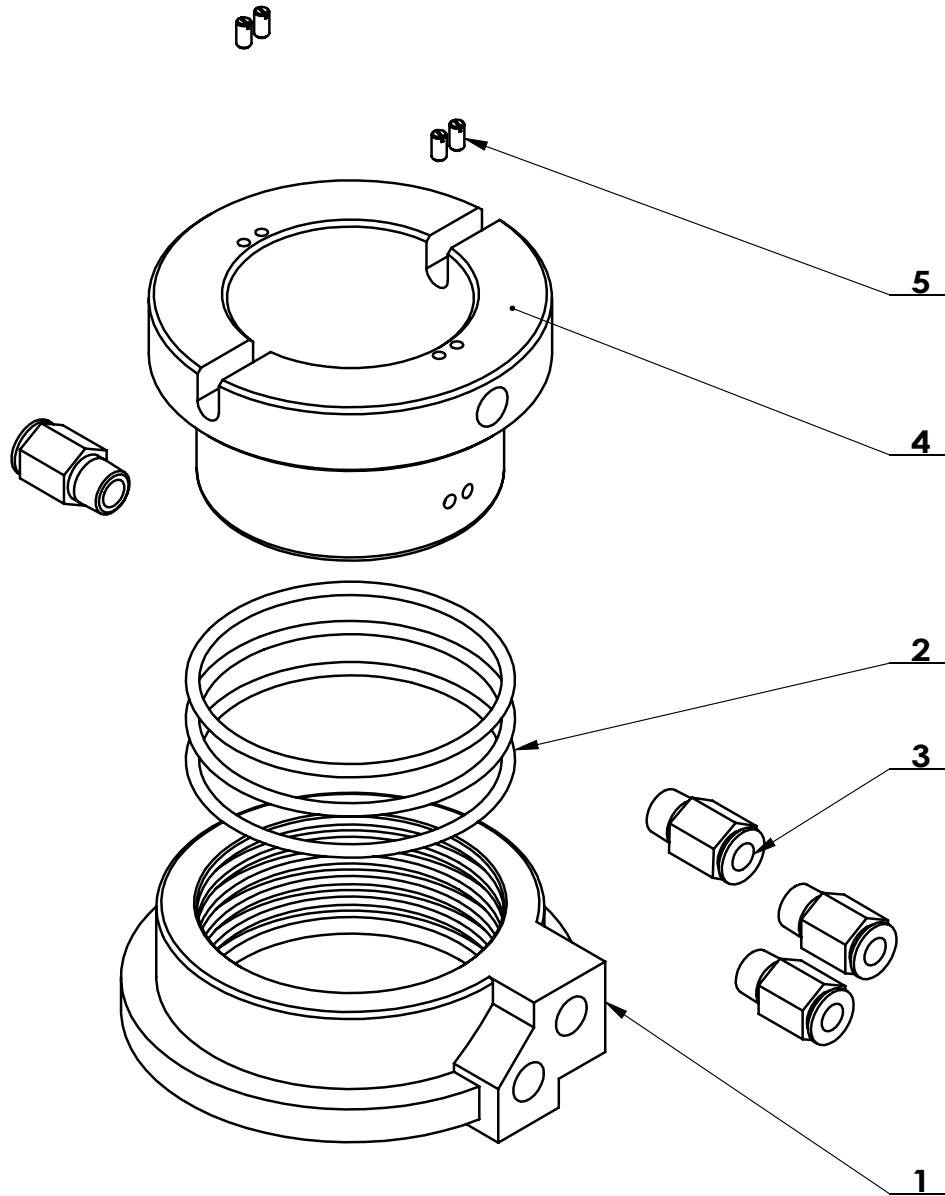
ITEM	PART. No	DESCRIPTION.	QT. Y
1	GB77-M16X1.5-16	SCREW	1
2	GB70.1-M8×30	INNER HEXA CYLINDRICAL SCREW	5
3	GB119.1-8×20	CYLINDRICAL PIN	2
4	CT-J-0000006	GEARBOX TOP	1
5	GB276-6010	DEEP GROOVE BALL BEARINGS	1
6	CT-J-0000001	WORM SHAFT	1
7	GB1096-12×8×56	COMMON FLAT KEY	1
8	CT-J-0000003	WORM	1
9	GB894.1-50	SHAFT ELATIC BIG RETAINING RING A-TYPE	1
10	GB276-6208	DEEP GROOVE BALL BEARINGS	1
11	CT-J-0000005	GEARBOX TOP	1
12	GB41-M8	HEXANGULAR NUT	5
13	CT-J-0100000	CAP	1
14	GB297-30205	CYLINDRICAL BALL BEARING	2
15	GB1099.1-6×9×22	COMMON SEMI-CIRCULAR KEY	1
16	CT-J-0000004	WORM ROD	1
17	FB25-40 GB13871.92	SEALED RING	1
18	CT-J-0000008	BELT PULLEY	1
19	GB96.2-8	LARGE WASHER C GRADE	1
20	GB5781-M8×16	HEXANGULAR BOLT	1

REVISION A-02

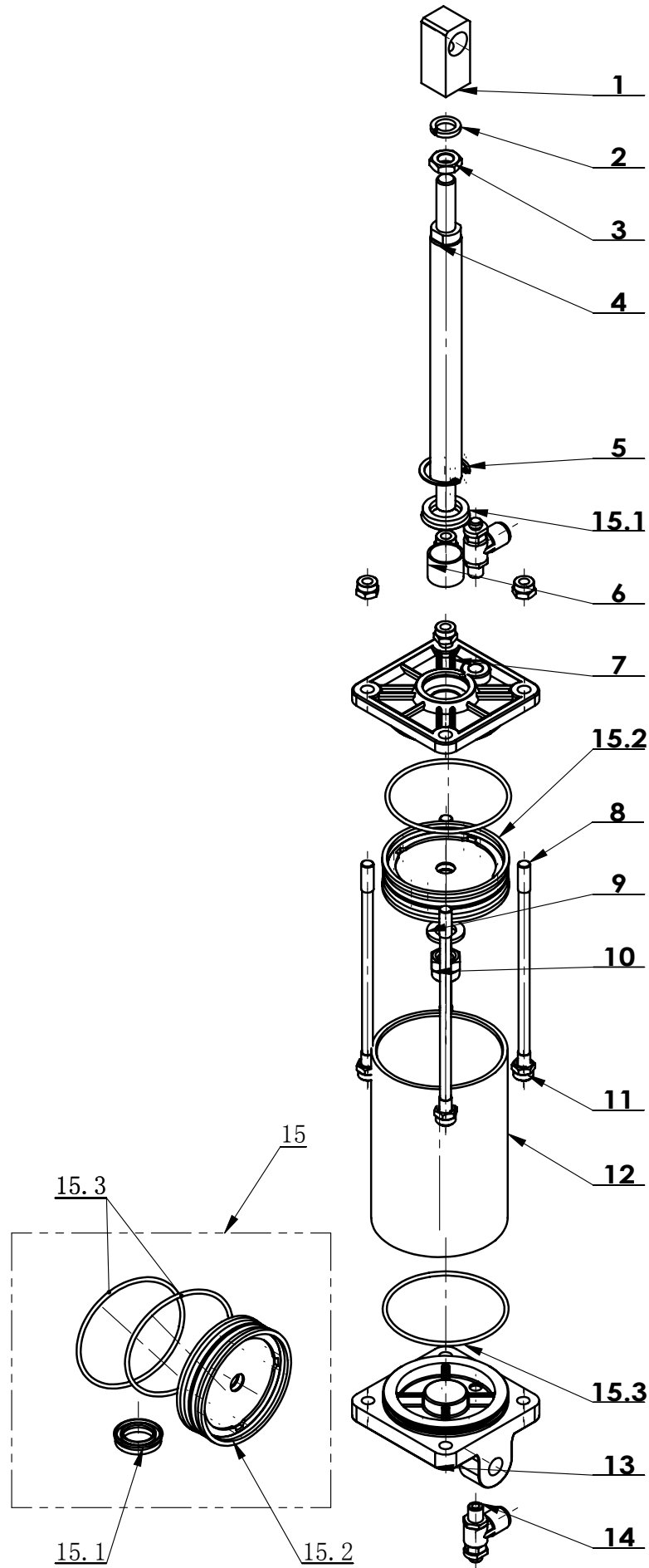
CT-LS-2000000



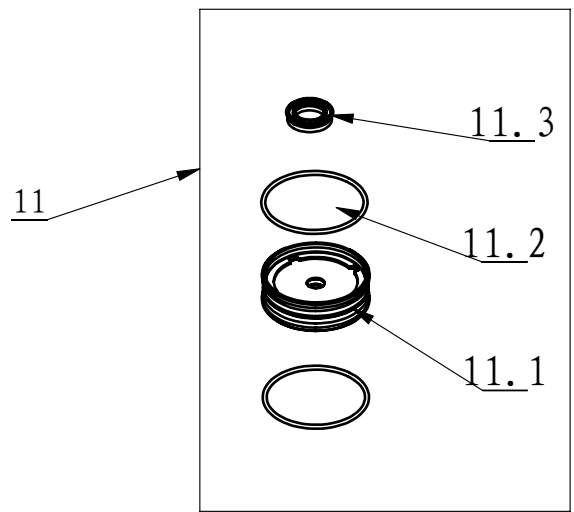
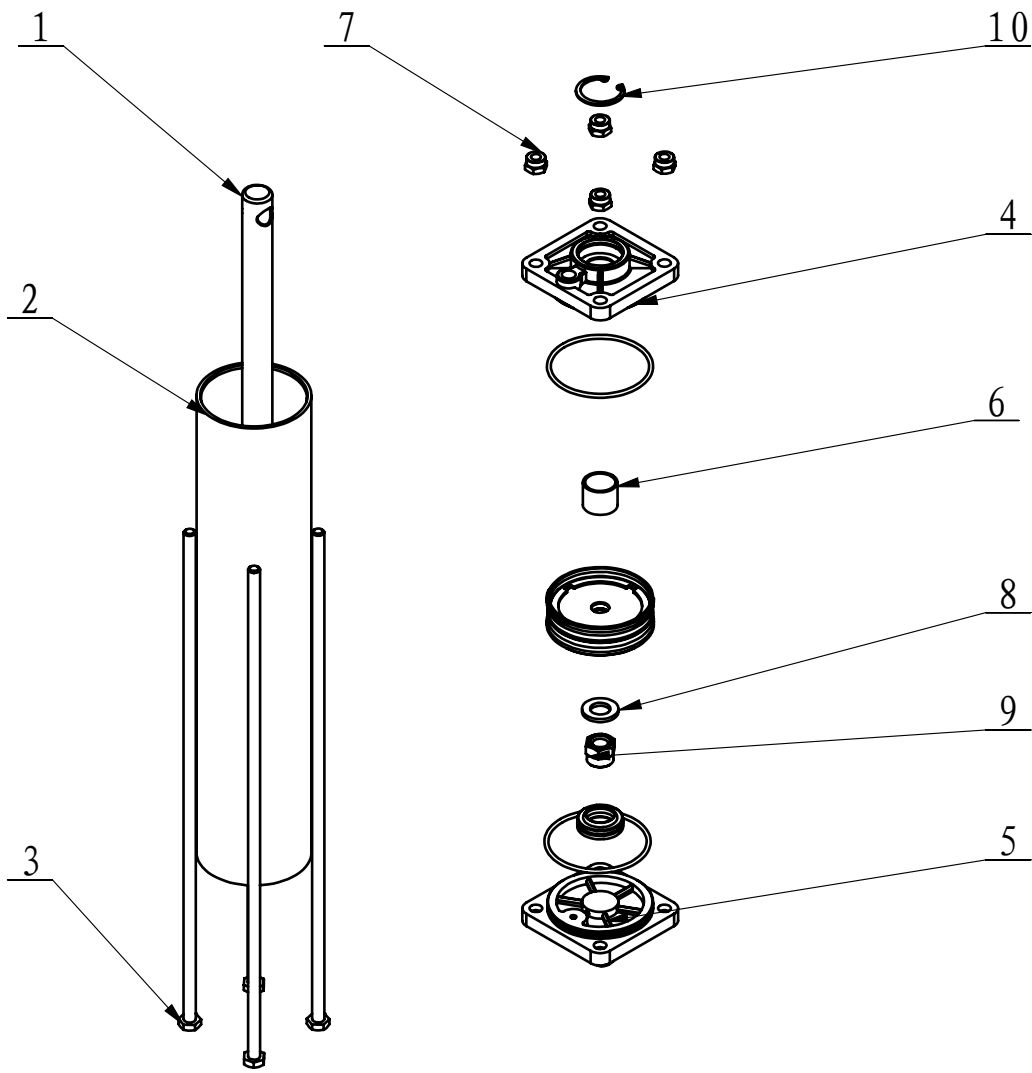
ITEM	PART. No	DESCRIPTION.	QT. Y
1	CT-LS-2000001	SHAFT-CLYNDR, 445	1
2	FPL 8-02	INSERT ELBOW $\Phi 8$, R1/4	1
3	CT-LS-1000004	CYLINDER COVER	1
4	CT-LS-1000002	PISTON	1
5	CT-LS-1000003	CYLINDER BODY	1
6	FPL 8-01	INSERT ELBOW $\Phi 8$, R1/8	1
7	GB6171- M18 \times 1.5	NUT THIN TOOTH	1
8	GB/T 6177. 1-M6	HEXA FLANGE NUT	12
9	GB95-6	FLAT WASHER	12
10	GB70. 1-M6 \times 20	INNER HEXA CYLINDRICAL SCREW	12
11	GB893. 2-30	ELASTIC RETAINING RING B-TYPE	1
12	CT-LS-1100000	CYCLINDER SEALING PARTS ASSEMBLY	1
12. 1	CT-LS-1000007	CLAMP RING	2
12. 2	CT-LS-1000008	PISTION SUPPORT RING	1
12. 3	CT-LS-1000011	Y-RING	2
12. 4	GB3452. 1-185 \times 3. 55-G	O-RING G TYPE	1
12. 5	CT-LS-1000009	GUIDER SPACER	1
12. 6	CT-Y-0160007	DUSTPROOF SEALING RING	1



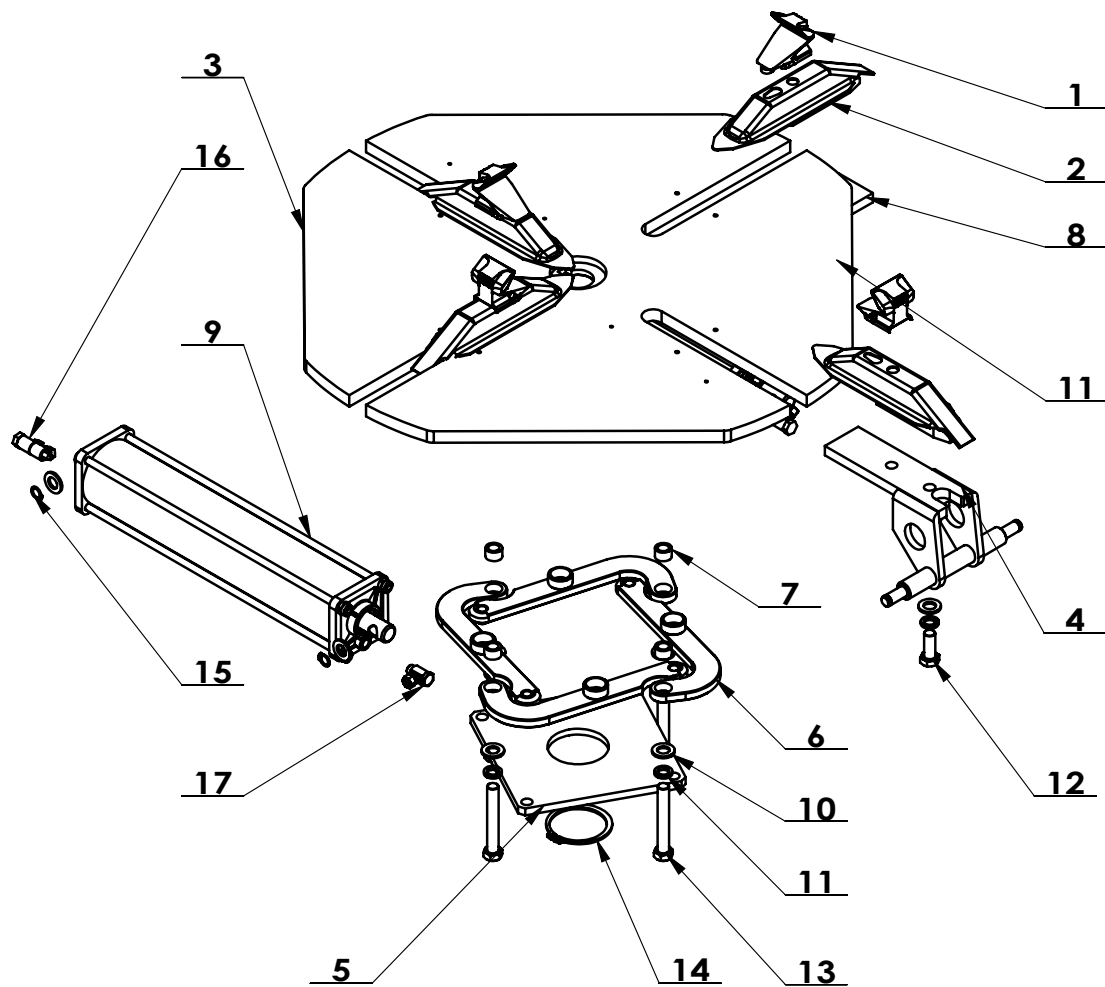
ITEM	PART. No	DESCRIPTION.	QT. Y
1	CT-Q-1000002	AIR GUIDE EXTERNAL BUSHING	1
2	GB3452. 1-60×2. 65-G	O-RING 60X2. 65	3
3	FPC 6-01	MALE STRAIGHT	4
4	CT-Q-1000001	AIR GUIDE ROTATION BUSHING	1
5	GB73-M3×6	SLOTTED FLATTEN HEAD SET SCREW	4



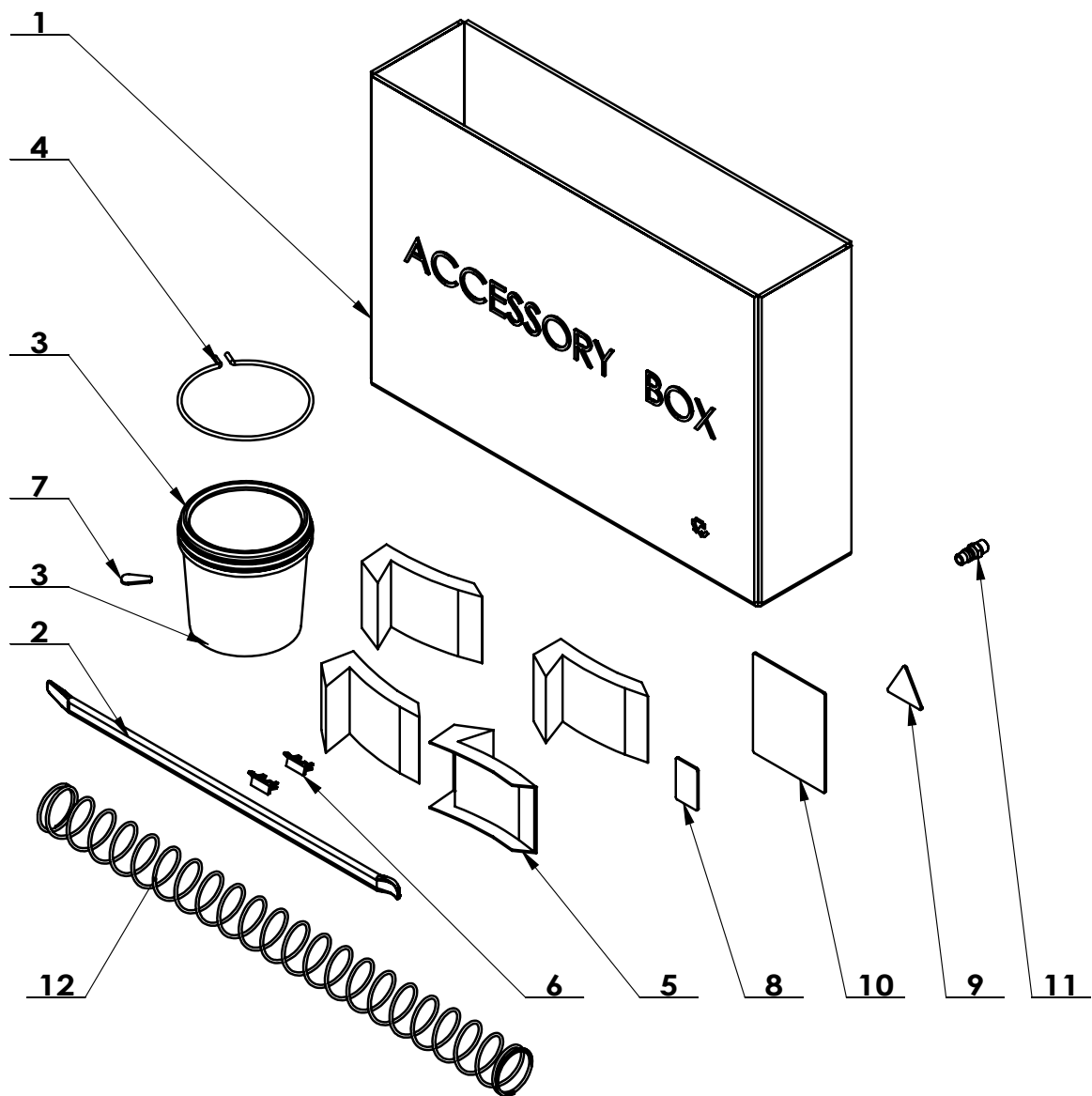
ITEM	PAET. NO	DESCRIPTION	QT. Y
1	CT-XD-1000004	SHAFT CONNECTOR	1
2	GB93-12	STANDARD SPRING WASHER	1
3	GB/T6172. 1-M12	HEXANGULAR THIN NUT	1
4	CT-XD-2000002	PISTON ROD	1
5	GB893. 1-30	ELASTIC RETAINING RING A-TYPE	1
6	JH1 2020	BEARING-SLIDE	1
7	CT-Y-6600001	CYLINDER FRONT COVER	1
8	CT-XD-1000003	BARS	4
9	GB95-12	FLAT WASHER	1
10	GB889. 1-M12	1-TYPE PREVAILING TORQUE TYPE HEXAGON LOCK NUT	1
11	GB889. 1-M8	1-TYPE PREVAILING TORQUE TYPE HEXAGON LOCK NUT	8
12	CT-XD-1000001	CYLINDER BODY	1
13	CT-XD-1000005	CYLINDER REAR COVER	1
14	FJSC 8-01	ELBOW SPEED CONTROLLER	2
15	CT-XD-2100000	O-RINGS ASSEMBLY	1
15.2	CT-Y-6610000	PISTON	1
15.1	CT-Y-0160007	SEAL-ROD, CYLNDR	1
15.3	GB3452. 1-75×2.65-G	HYDRAULIC-PNEUMATIC RUBBER O- RING G TYPE	2



ITEM	PART. No	DESCRIPTION.	QT. Y
1	CT-Y-1120001	SHAFT-CYLNDR	1
2	CT-Y-1120002	SLEEVE-CYLNDR 70	1
3	CT-Y-1120003	BOLT	4
4	CT-Y-0160002	FRONT COVER	1
5	CT-Y-0160003	REAR COVER	1
6	JH1 2020	BEARING-SLIDE	1
7	GB889. 1-M8	1-TYPE PREVAILING TORQUE TYPE HEXAGON LOCK NUT	4
8	GB95-12	FLAT WASHER	1
9	GB889. 1-M12	1-TYPE PREVAILING TORQUE TYPE HEXAGON LOCK NUT	1
10	GB893. 1-30	ELASTIC RETAINING RING A-TYPE	1
11	CT-Y-1121000	CYLINDER SEALING PARTS ASSEMBLY	1
11.1	CT-Y-0160007	SEAL-ROD, CYLNDR	1
11.2	CT-Y-0161000	PISTON-W/WSHR, ASSY	1
11.3	GB3452. 1-65×2. 65-G	HYDRAULIC-PNEUMATIC RUBBER O-RING G TYPE	2



ITEM	PART. No	DESCRIPTION.	QTY
1	CT-Y-1110000	SLIDE COVER	4
2	CT-Y-0100002	CLAMP	4
3	CT-Y-2110000	TURNTABLE	1
4	CT-Y-2140000	BRACKET-CYLINDER	2
5	CT-Y-0150000	SQUARE TURNTABLE	1
6	CT-Y-2120000	CONNECTION PLATE	4
7	CT-Y-0100003	SPACER	4
8	CT-Y-1100001	PRESS BOARD	2
9	CT-Y-1120000	CYLINDER ASSEMBLY	2
10	GB95-12	FLAT WASHER	12
11	GB93-12	STANDARD SPRING WASHER	8
12	GB5781-M12×30	HEXANGULAR BOLT	4
13	GB5780 M12X83	HEXANGULAR BOLT	4
14	GB894.1-65	SHAFT ELATIC BIG RETAINING RING A-TYPE	1
15	GB894.1-12	SHAFT ELATIC BIG RETAINING RING A-TYPE	4
16	CT-Y-0100005	HINGE TEE $\Phi 6$ R1/8"	2
17	CT-Y-0100006	HINGE ELBOW $\Phi 6$ R1/8"	2



ITEM	PART. No	DESCRIPTION.	QT. Y
1	C-01-8000001	ACCESSORY BOX	1
2	C-01-1000008	CROWBAR 20 "	1
3	C-01-1300000	GREASE CONTAINER	1
4	C-01-1000005	BRACKET	1
5	C-01-8000002	CLAMP PROTECTION COVER	4
6	C-31-1300014	SHEATH	2
7	C-31-1300015	PLASTIC COVER	1
8	C-31-8000003	GUARANTEE	1
9	C-31-8000002	PASS CARD	1
10	C-31-8000001	USER MANUAL	1
11	C-01-100000D	AIR SUPPLY CONNECTOR	1
12	C-70-1220001	VERTICAL SHAFT SPRING	1